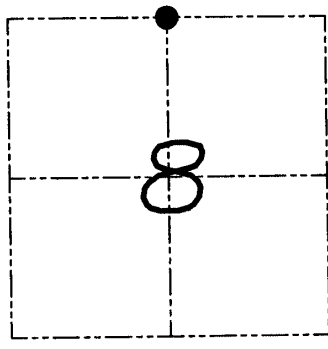


U.S. PUBLIC LAND SURVEY MONUMENT RECORD

Section 8, Town 6 North Range 3 West, Town of Mount Ida, Grant County, Wisconsin

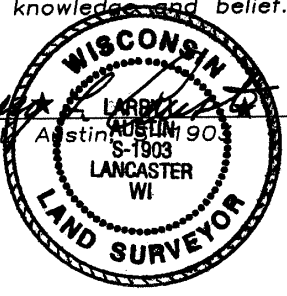
CERTIFICATE

I, Larry L. Austin, do hereby certify that the corner location on this record was determined by me and/or under my direct supervision and that this U.S. public land survey monument record is correct and complete to the best of my knowledge and belief.



● = CORNER LOCATION

Larry L. Austin 12-28-08
 Larry Austin, Surveyor date



HISTORY OF CORNER

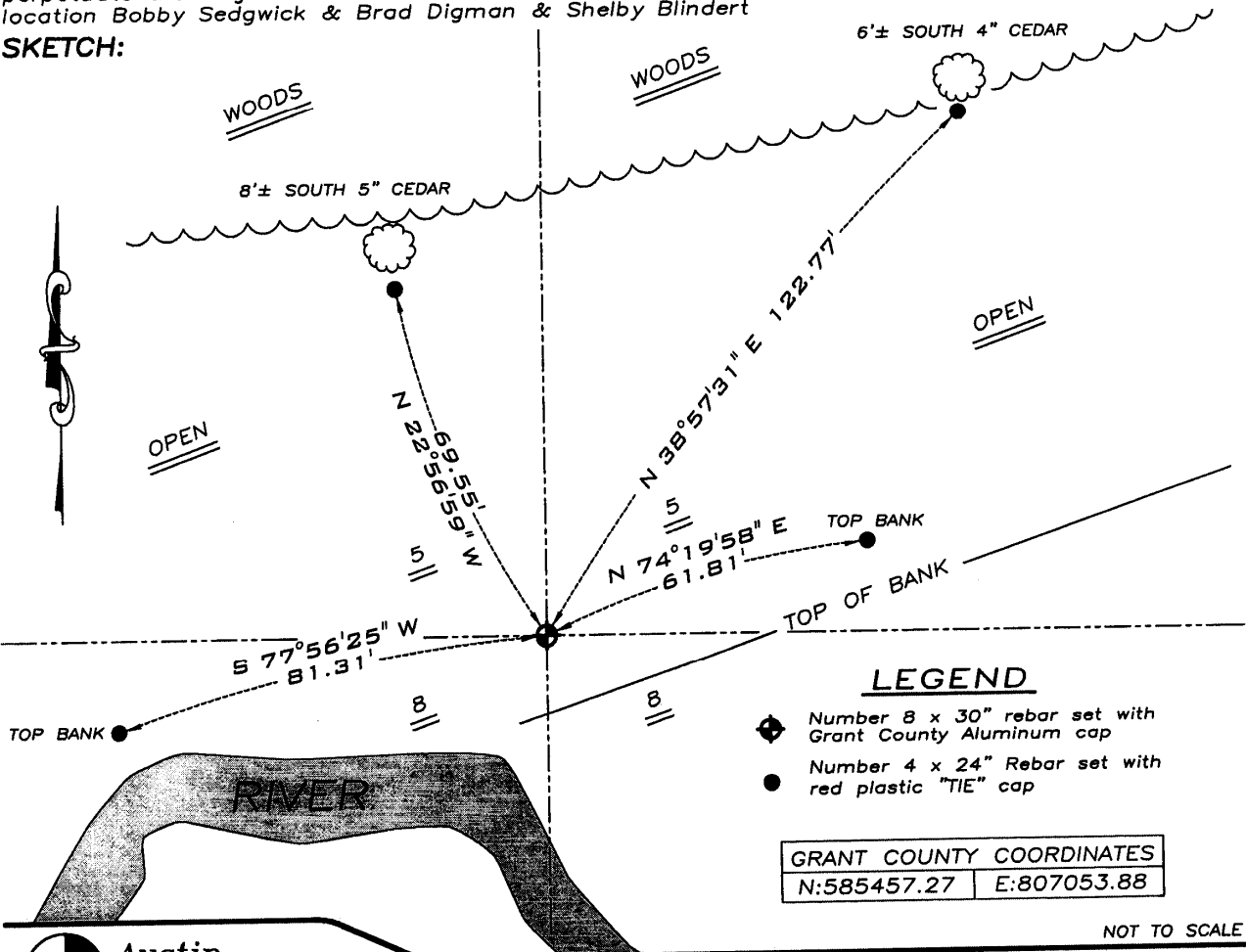
Corner was originally set in 1832 by Parke. No other record of the corner was found.

CORNER EVIDENCE FOUND

I reset the corner proportionately and on-line between the Northwest and Northeast corners of Section 8. Verified this location using EDM & GPS methods.

DESCRIPTION OF CORNER AND WITNESS MONUMENTS, references and accessories used to perpetuate the original or re-established location of this corner. Witnesses to monument location Bobby Sedgwick & Brad Digman & Shelby Blindert

SKETCH:



LEGEND

- ◆ Number 8 x 30" rebar set with Grant County Aluminum cap
- Number 4 x 24" Rebar set with red plastic "TIE" cap

GRANT COUNTY COORDINATES	
N:585457.27	E:807053.88

NOT TO SCALE

Austin Engineering LLC
 4211 HWY 81 E, LANCASTER, WI 53813
 PHONE 608-723-6363 FAX 608-723-6702

JOB NUMBER OBS259-GRANT COUNTY HIGHWAY DEPT
 FIELDBOOK: TDSR, 2014 DRAWN BY: SW AUSTIN
 G:\T6NR3W\08 APPROVED: LL AUSTIN
 H:\TIE\T6NR3W\30