

GRANT COUNTY CERTIFIED LAND CORNER

CORNER NO. 27

CERTIFICATE:

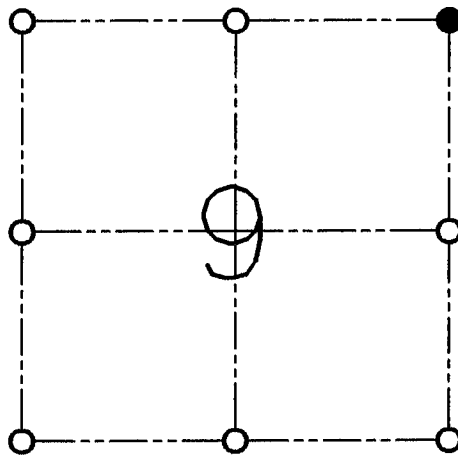
I, LARRY L. AUSTIN, DO HEREBY CERTIFY THAT ON FIRST DAY OF APRIL, 1999, I FOUND OCCUPIED EVIDENCE OF THE NORTHEAST CORNER OF SECTION 9, TOWN 6 NORTH, RANGE 3 WEST, OF THE FOURTH PRINCIPAL MERIDIAN, AND I RE-ESTABLISHED SAID CORNER ACCORDING TO THE WISCONSIN STATUTES AS SHOWN AND DESCRIBED HEREON.

DATED THIS SEVENTH DAY OF APRIL, 1999

Larry L. Austin
LARRY L. AUSTIN S-1903



SEAL



● = CORNER LOCATION

**NORTHEAST CORNER
SECTION 9, T 6 N R 3 W
TOWN OF MOUNT IDA**

HISTORY OF ORIGINAL CORNER ESTABLISHMENT:

CORNER WAS SET IN 1833 BY HARVEY PARKE.

DESCRIPTION OF CORNER EVIDENCE FOUND:

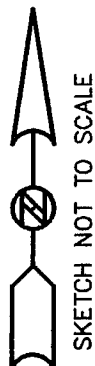
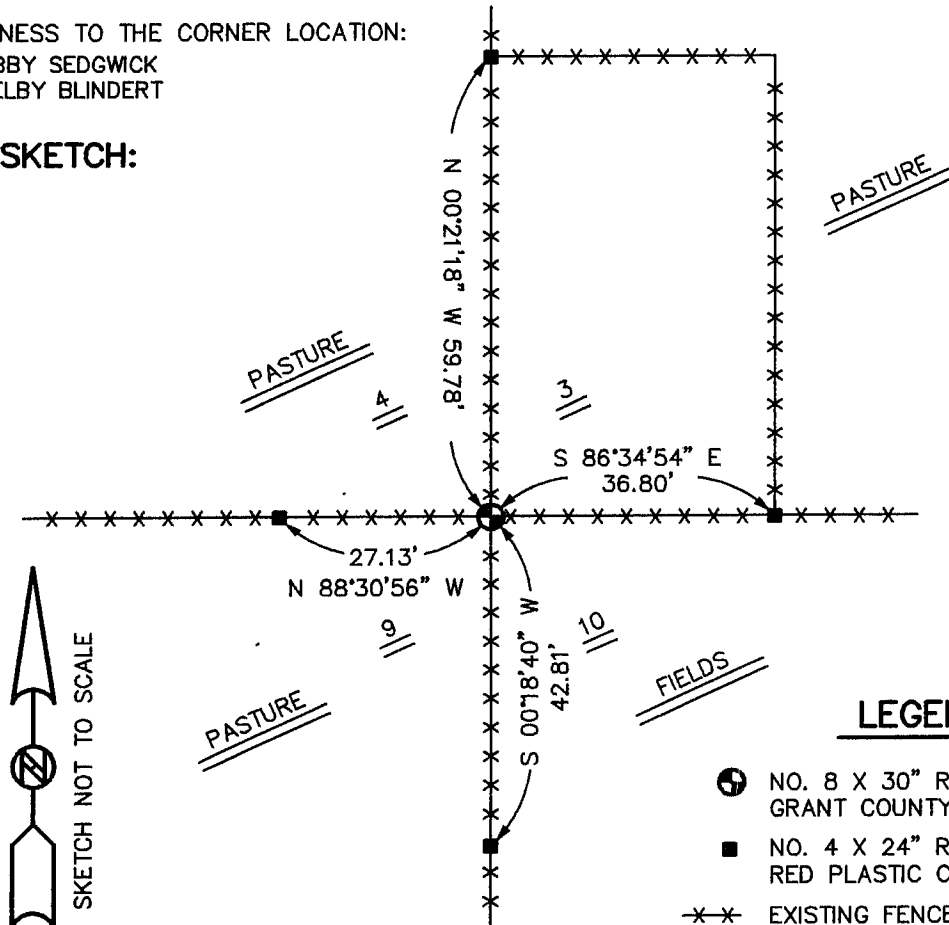
I FOUND AN OCCUPIED FENCE CORNER AT THIS LOCATION AND ACCEPTED ITS LOCATION AFTER AN E.D.M. AND G.P.S. TRAVERSE OF THE AREA.

DESCRIPTION OF CORNER AND WITNESS MONUMENTS, REFERENCES AND ACCESSORIES USED TO PERPETUATE THE ORIGINAL OR RE-ESTABLISHED LOCATION OF THIS CORNER:

WITNESS TO THE CORNER LOCATION:

BOBBY SEDGWICK
SHELBY BLINDERT

SKETCH:



LEGEND

- NO. 8 X 30" REBAR SET WITH GRANT COUNTY ALUMINUM CAP
- NO. 4 X 24" REBAR SET WITH RED PLASTIC CAP
- x—x—x— EXISTING FENCE