


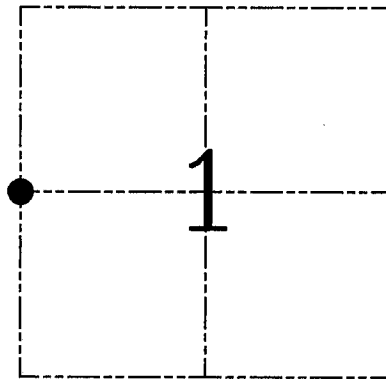
**U.S. PUBLIC LAND SURVEY MONUMENT RECORD – GRANT COUNTY, WI**  
**Section 1, Town 6 North Range 3 West, Town of Mount Ida**

CERTIFICATE

I, Larry L. Austin, do hereby certify that the corner location on this record was determined by me and/or under my direct supervision and that this U.S. public land survey monument record is correct and complete to the best of my knowledge and belief.

Dated this 2nd day of March, 2004

*Larry L. Austin*  
 Larry L. Austin S-1903  




● = CORNER LOCATION

HISTORY OF CORNER ESTABLISHMENT

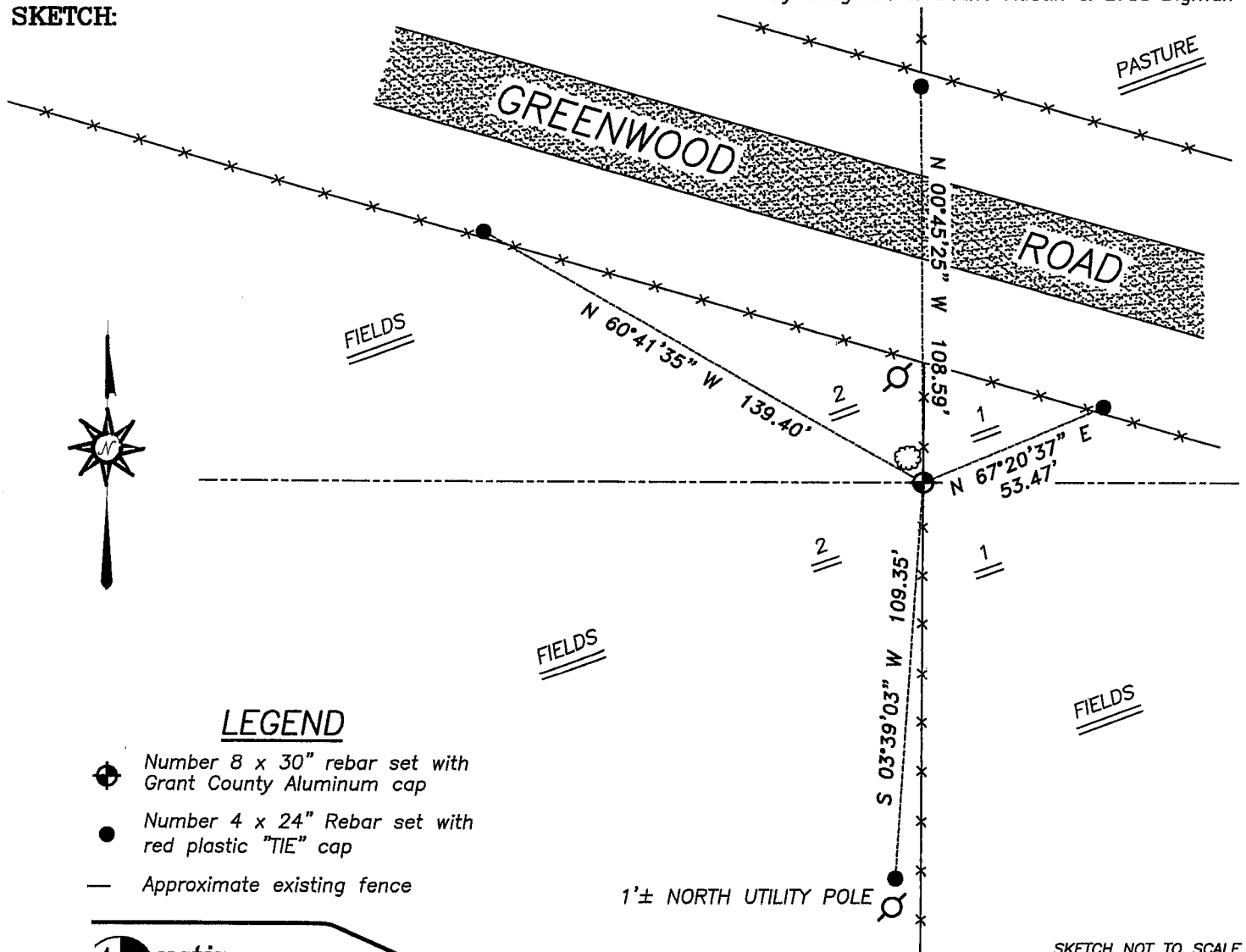
Corner was originally set in 1833 by Parke.  
 No other record of the corner was found.

DESCRIPTION OF CORNER EVIDENCE FOUND

I set the corner proportionately between the Northwest and Southwest corners of Section 1. Verified this location using EDM & GPS methods.

DESCRIPTION OF CORNER AND WITNESS MONUMENTS, references and accessories used to perpetuate the original or re-established location of this corner. Witnesses to corner location Bobby Sedgwick & Shane Austin & Brad Digman

**SKETCH:**



**LEGEND**

- ⊕ Number 8 x 30" rebar set with Grant County Aluminum cap
- Number 4 x 24" Rebar set with red plastic "TIE" cap
- Approximate existing fence

1± NORTH UTILITY POLE

SKETCH NOT TO SCALE

**Austin Engineering LLC**

HWY 81 E, LANCASTER, WI 53813  
 608-723-6363 FAX 608-723-6702

JOB NUMBER 03S354  
 FIELDBOOK: TSDR, 2328  
 G:\T6NR2W\06  
 H:\TIE\T6NR3W\19

DRAWN BY: SW AUSTIN  
 APPROVED: LL AUSTIN