

GRANT COUNTY CERTIFIED LAND CORNER

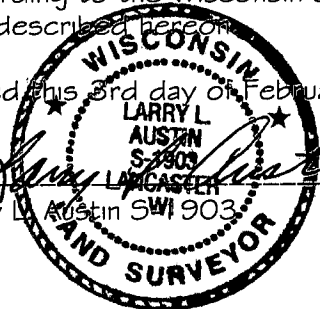
CORNER NUMBER 20

CERTIFICATE:

I, Larry L. Austin, do hereby certify that on the 15th day of January, 2000, I found evidence of the East 1/4 corner of Section 01, Town 6 North, Range 3 West, of the 4th Principal Meridian, and I re-established said corner according to the Wisconsin statutes as shown and described hereon.

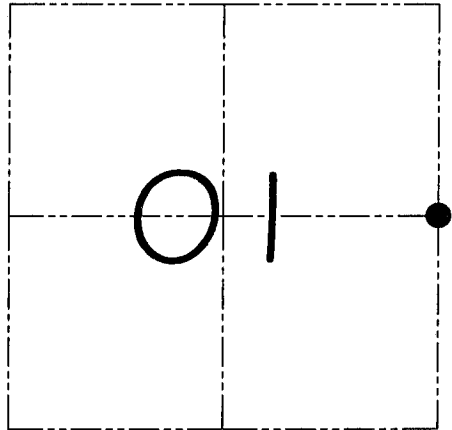
Dated this 3rd day of February, 2000

Larry L. Austin
Larry L. Austin SW 1903



Grant County COOR
N - 588102.1
E - 830866.4

SEAL



● = CORNER LOCATION

**EAST 1/4 CORNER OF
SECTION 01, T 6 N R 3 W
TOWN OF MOUNT IDA**

HISTORY OF ORIGINAL CORNER ESTABLISHMENT:

Corner was originally set in 1832 by Sibley.
In 1850 Geo Stuntz tied to the corner.

DESCRIPTION OF CORNER EVIDENCE FOUND:

I found no evidence of the original corner. I reset the corner at the recorded offset from the existing 1" iron pipe. Verified this location using E.D.M. and G.P.S. methods.

DESCRIPTION OF CORNER AND WITNESS MONUMENTS, references and accessories used to perpetuate the original or re-established location of this corner

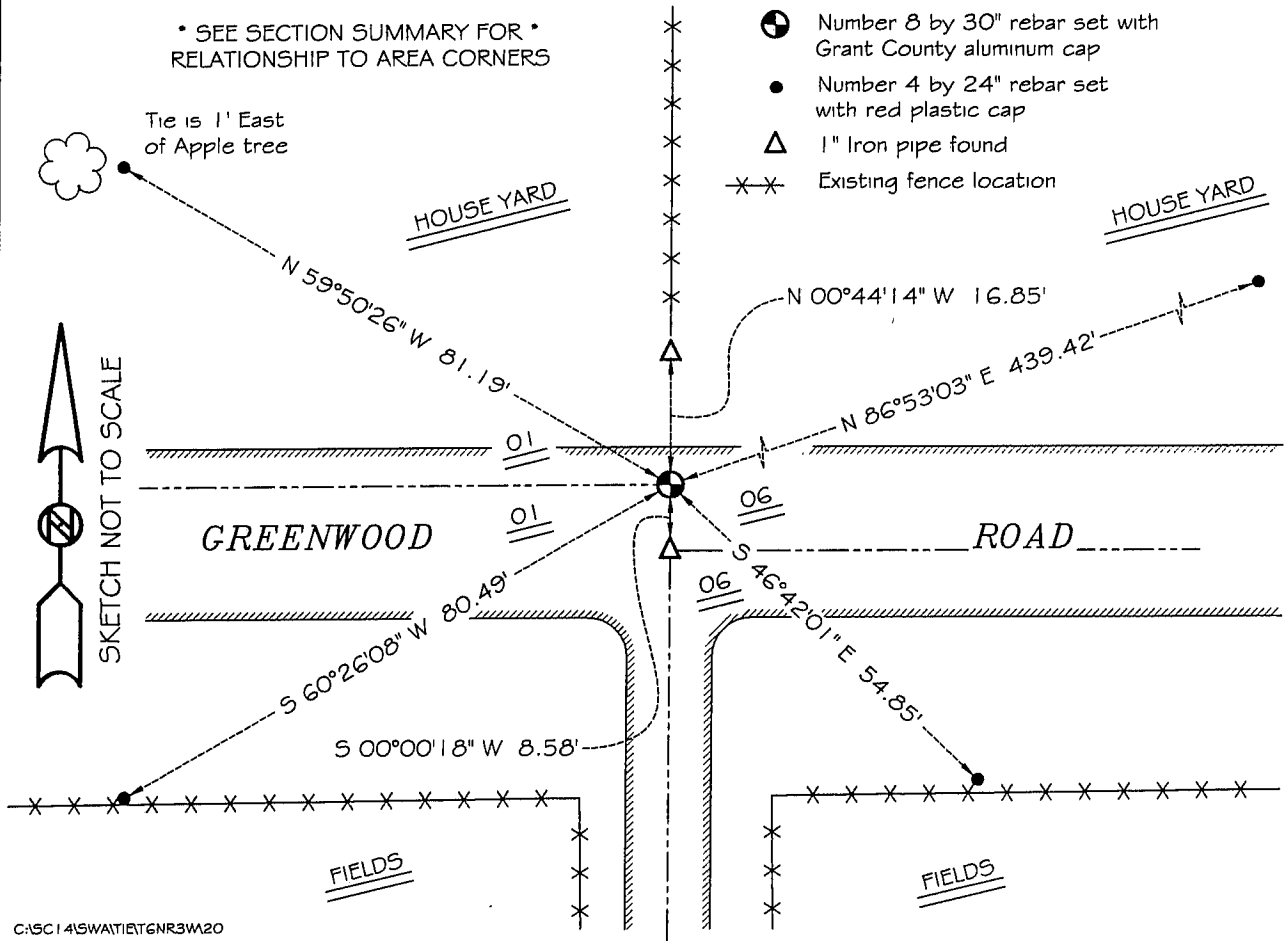
WITNESS TO THE CORNER LOCATION: BOBBY SEDGWICK : SHELBY BLINDERT

SKETCH:

* SEE SECTION SUMMARY FOR *
RELATIONSHIP TO AREA CORNERS

LEGEND

- Number 8 by 30" rebar set with Grant County aluminum cap
- Number 4 by 24" rebar set with red plastic cap
- △ 1" Iron pipe found
- ×× Existing fence location



GRANT COUNTY CERTIFIED LAND CORNER

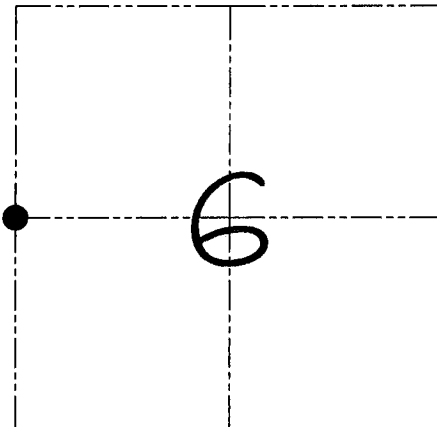
CORNER NUMBER 14

CERTIFICATE:

I, Larry L. Austin, do hereby certify that on the 15th day of January, 2000, I found evidence of the West 1/4 corner of Section 06, Town 6 North, Range 2 West, of the 4th Principal Meridian, and I re-established said corner according to the Wisconsin statutes as shown and described herein.

Dated this 3rd day of February, 2000

Larry L. Austin
 Larry L. Austin S-1903
 Lancaster WI 53153
 LAND SURVEYOR



● = CORNER LOCATION

**WEST 1/4 CORNER OF
SECTION 06, T 6 N R 2 W
TOWN OF FENNIMORE**

Grant County Coor.
 N - 588093.6
 E - 830866.5

SEAL

HISTORY OF ORIGINAL CORNER ESTABLISHMENT:

Corner was never originally set.
 No other record of the corner was found.

DESCRIPTION OF CORNER EVIDENCE FOUND:

I found an existing 1" iron pipe and accepted it's location
 after an E.D.M. and G.P.S. traverse of the area.

DESCRIPTION OF CORNER AND WITNESS MONUMENTS, references and accessories used to perpetuate the original or re-established location of this corner
 WITNESS TO THE CORNER LOCATION: BOBBY SEDGWICK : SHELBY BLINDERT

SKETCH:

* SEE SECTION SUMMARY FOR *
 RELATIONSHIP TO AREA CORNERS

LEGEND

- Number 8 by 30" rebar set with Grant County aluminum cap
- Number 4 by 24" rebar set with red plastic cap
- △ 1" Iron pipe found
- ×× Existing fence location

