

U.S. PUBLIC LAND SURVEY MONUMENT RECORD

Section 12, Town 6 North Range 3 West, Town of Mount Ida, Grant County, Wisconsin

CERTIFICATE

I, Larry L. Austin, do hereby certify that the corner location on this record was determined by me and/or under my direct supervision and that this U.S. public land survey monument record is correct and complete to the best of my knowledge and belief.

Larry L. Austin
 Larry L. Austin, S-1903 date 2-18-11



● = CORNER LOCATION

HISTORY OF CORNER

Corner was originally set in 1832 by Harvey Parke. In 1998 Bruce Bowden set a No. 6 rebar with cap. No other recent record of the corner was found.

CORNER EVIDENCE FOUND

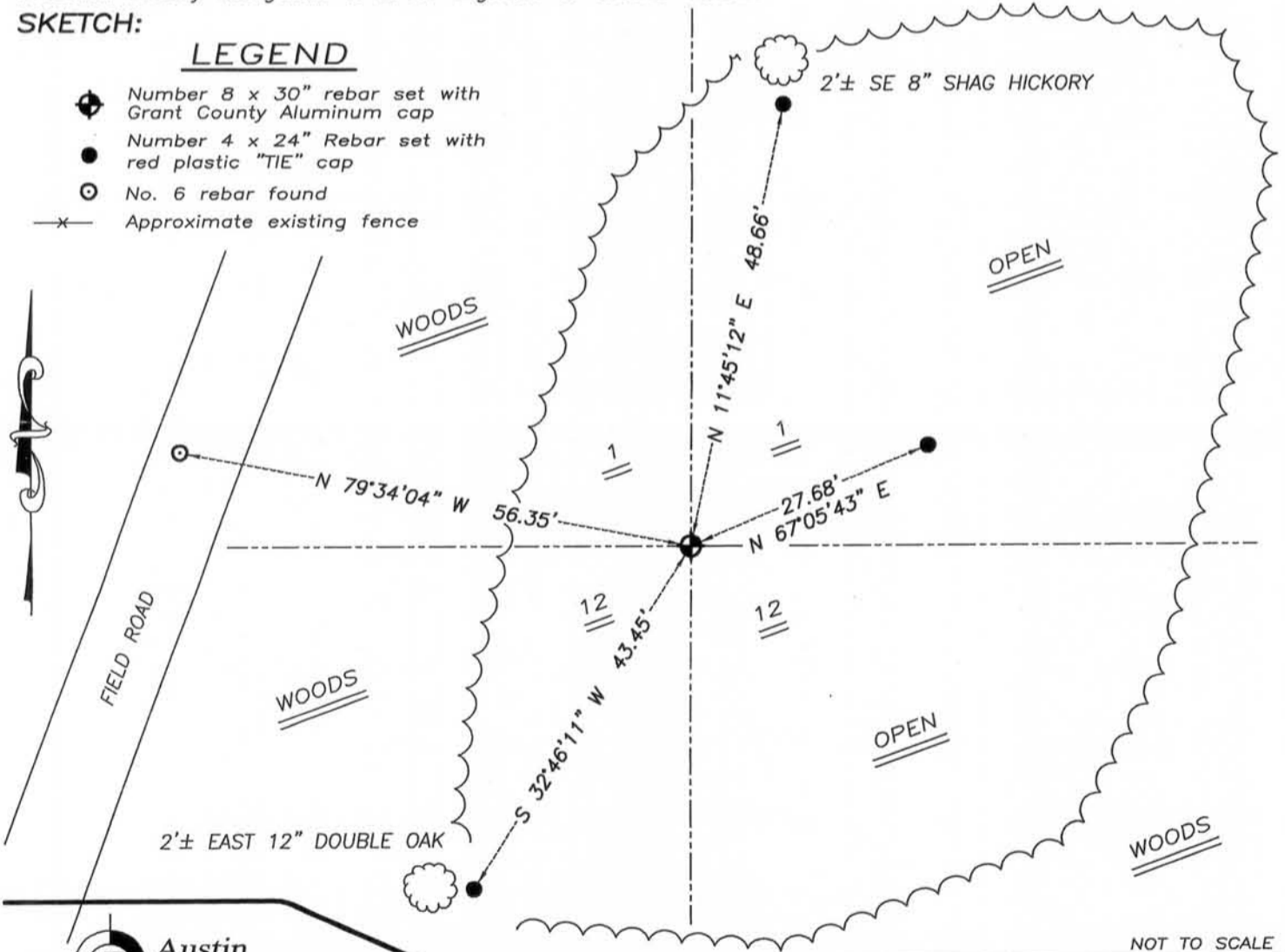
I was unable to locate the No. 6 rebar with cap due to woods clearing. I reset the corner based on the Northeast and Northwest corners of Section 12. Verified this location using EDM & GPS methods.

DESCRIPTION OF CORNER AND WITNESS MONUMENTS, references and accessories used to perpetuate the original or reestablished location of this corner. Witnesses to monument location Bobby Sedgwick & Brad Digman & Shane Austin

SKETCH:

LEGEND

- Number 8 x 30" rebar set with Grant County Aluminum cap
- Number 4 x 24" Rebar set with red plastic "TIE" cap
- No. 6 rebar found
- x- Approximate existing fence



NOT TO SCALE

Austin Engineering LLC
 austinengineeringllc.com

4211 HWY 81 E, LANCASTER, WI 53813
 PHONE: 608-723-6363 FAX: 608-723-6702

JOB NUMBER 10S208-WATERMAN
 FIELDBOOK: TDSR, 10-01
 G:\GRANTDOT\USH61
 H:\TIE\T6NR3W\22

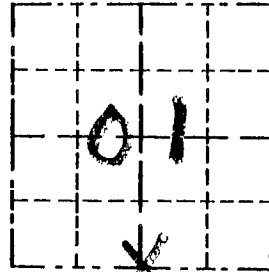
DRAWN BY: SW AUSTIN
 APPROVED: LL AUSTIN

Survey Monument Record

TYPE OF MONUMENT 3/4" X 24" IRON

CORNER NO. 22
 SECTION 1
 TOWN 6N
 RANGE 3W

FIELD BOOK: 96-14
 PAGE (11)



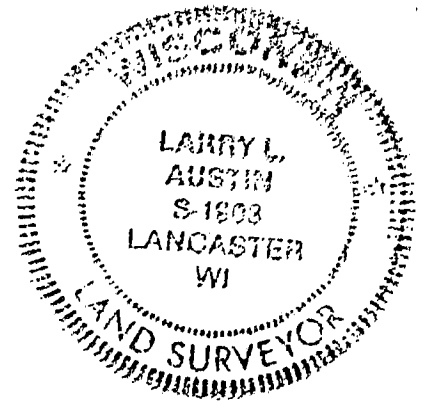
BASIS FOR MONUMENT LOCATION

(Use reverse side if necessary)

Show info such as: History of corner, with reference to Vol. and pg., dates, surveyor; exact description of monument replaced; if location computed, by taped or EDM traverse; landowner, remarks, etc.

SEAL:

CORNER SET IN 1833 BY HARVEY PARKE, NO RECORD FOUND SINCE ORIGINAL SURVEY; I ACCEPTED A OCCUPIED FENCE CORNER, VERIFIED ITS LOCATION USING EDM METHODS.



CERTIFIED CORRECT

Larry L. Austin
 Registered Land Surveyor

DATE: 3/28/97

TIE SKETCH

Show at least three (3) ties and monument

