

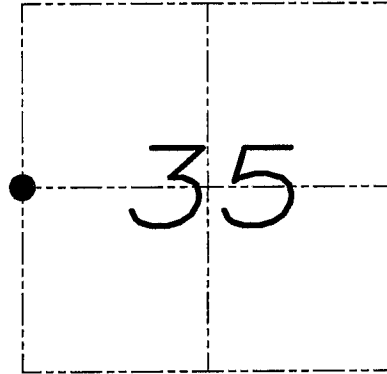
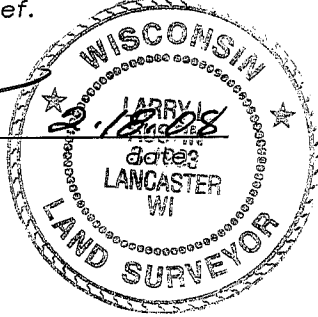
# U.S. PUBLIC LAND SURVEY MONUMENT RECORD

Section 35, Town 6 North Range 2 West, Town of Fennimore, Grant County, Wisconsin

## CERTIFICATE

I, Larry L. Austin, do hereby certify that the corner location on this record was determined by me and/or under my direct supervision and that this U.S. public land survey monument record is correct and complete to the best of my knowledge and belief.

*Larry L. Austin*  
Larry L. Austin, S-1903



● = CORNER LOCATION

## HISTORY OF CORNER

Corner was originally set in 1833 by Parke. No other record of the corner was found.

## CORNER EVIDENCE FOUND

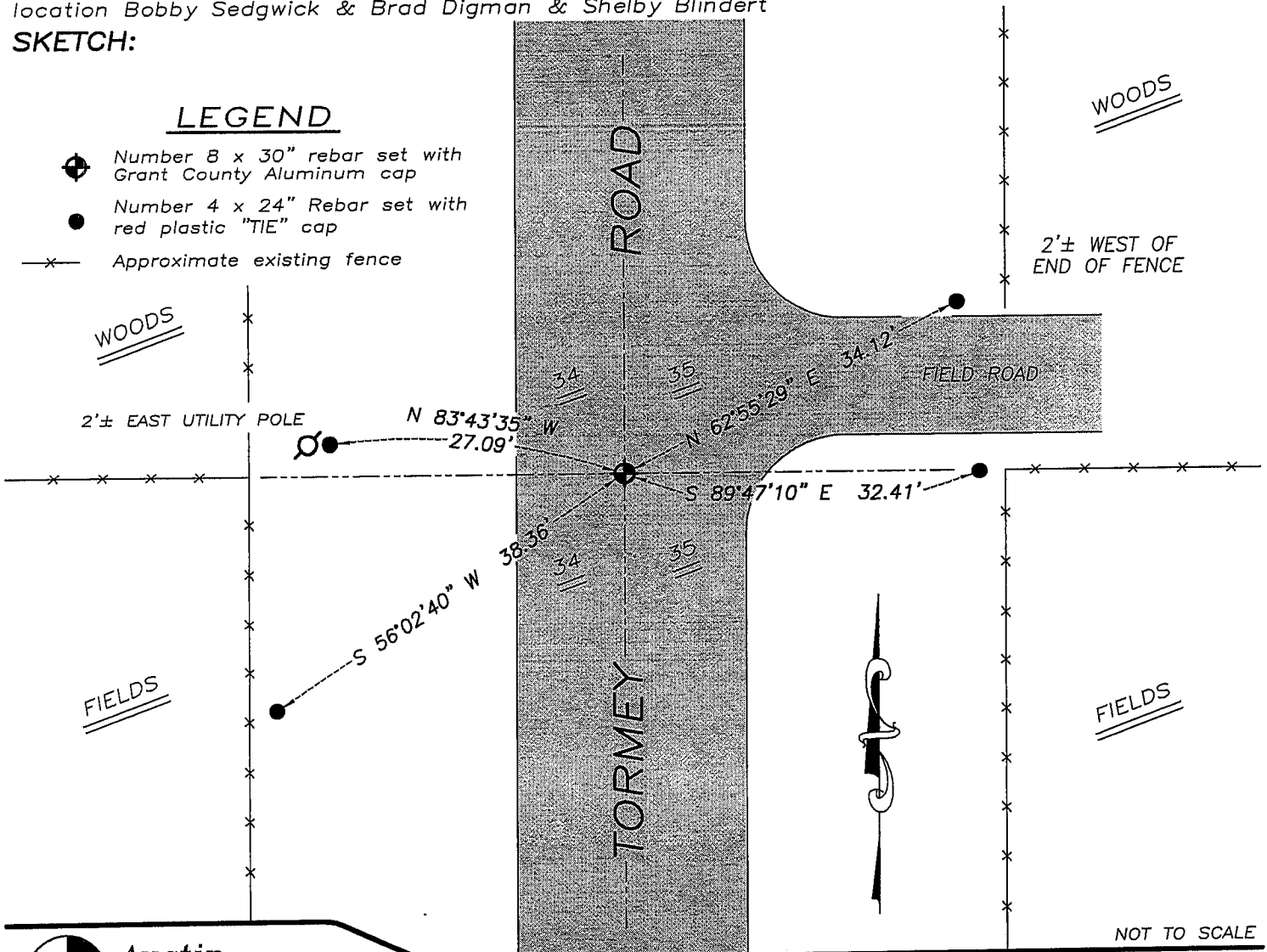
I reset the corner at an occupied location. Verified this location using EDM & GPS methods.

**DESCRIPTION OF CORNER AND WITNESS MONUMENTS,** references and accessories used to perpetuate the original or re-established location of this corner. Witnesses to monument location Bobby Sedgwick & Brad Digman & Shelby Blindert

## SKETCH:

### LEGEND

- Number 8 x 30" rebar set with Grant County Aluminum cap
- Number 4 x 24" Rebar set with red plastic "TIE" cap
- x- Approximate existing fence



NOT TO SCALE

**Austin Engineering LLC**

4211 HWY 81 E, LANCASTER, WI 53813  
PHONE 608-723-6363 FAX 608-723-6702

JOB NUMBER 07S323  
FIELDBOOK: TDSR, 2707  
G:\T5NR2W\02  
H:\TIE\T6NR2W\118

DRAWN BY: SW AUSTIN  
APPROVED: LL AUSTIN

118