

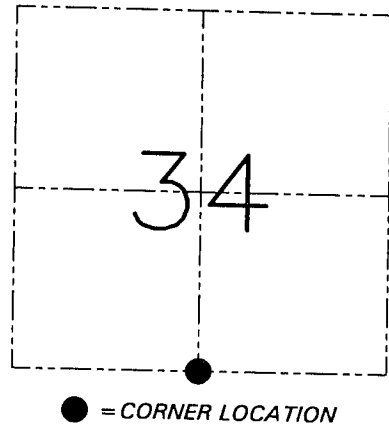
U.S. PUBLIC LAND SURVEY MONUMENT RECORD - GRANT COUNTY, WI
 Section 34, Town 6 North Range 2 West, Town of Fennimore

CERTIFICATE

I, Larry L. Austin, do hereby certify that the corner location on this record was determined by me and/or under my direct supervision and that this U.S. public land survey monument record is correct and complete to the best of my knowledge and belief.

Dated this 12th day of December, 2009

Larry L. Austin
 Larry L. Austin S-1903



HISTORY OF CORNER ESTABLISHMENT

Corner was originally set in 1833 by Harvey Parke.
 No other record of the corner was found.

DESCRIPTION OF CORNER EVIDENCE FOUND

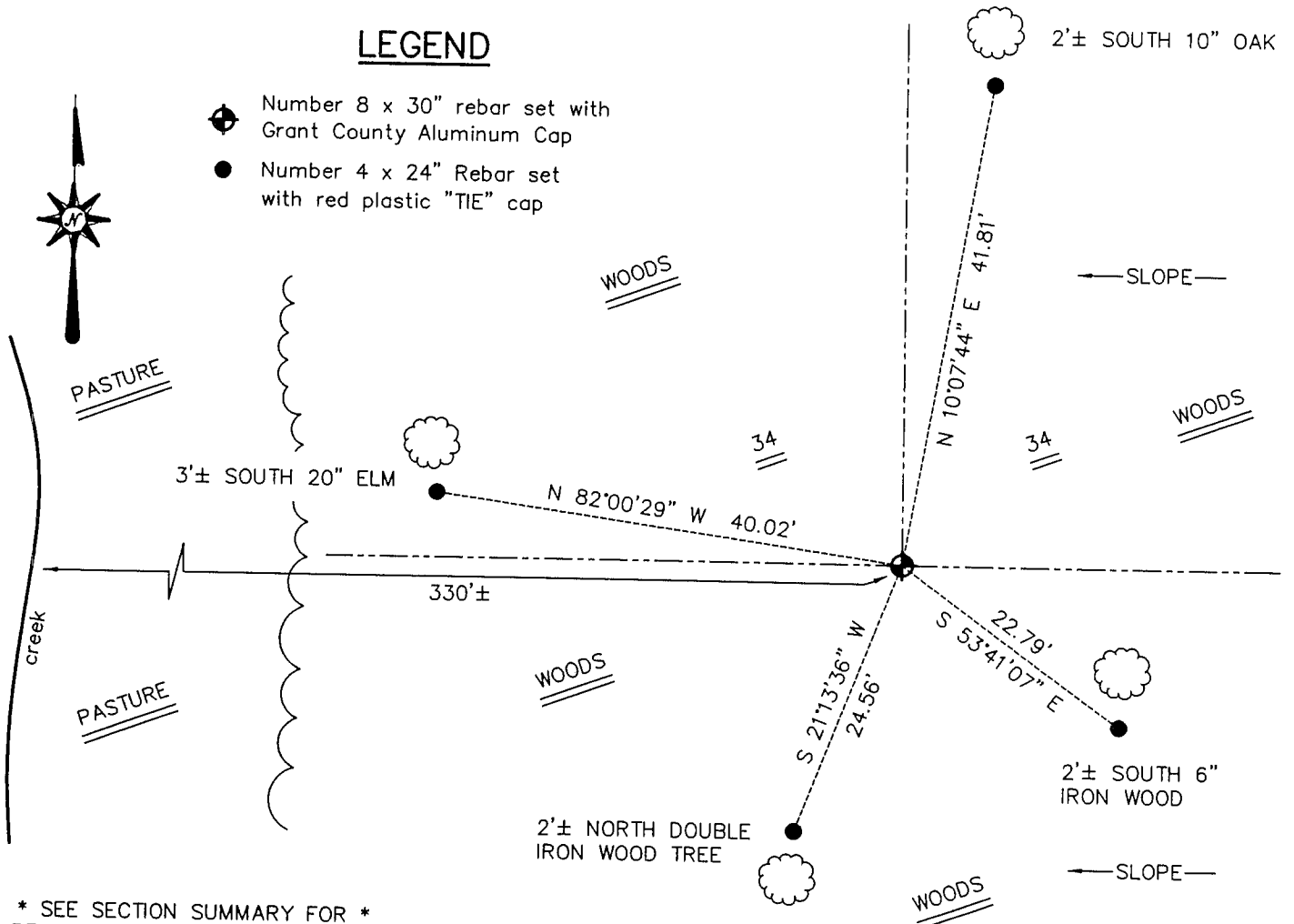
I reset the corner based on proportioning to adjoining corners. This location was verified by a topo call to the creek. This location also fit an occupied "40" in Section 3, T5N R2W, East of the corner. Verified this location using EDM & GPS methods.

DESCRIPTION OF CORNER AND WITNESS MONUMENTS, references and accessories used to perpetuate the original or re-established location of this corner. Witnesses to the corner location Bobby Sedgwick & Brad Digman

SKETCH:

LEGEND

- ◆ Number 8 x 30" rebar set with Grant County Aluminum Cap
- Number 4 x 24" Rebar set with red plastic "TIE" cap



* SEE SECTION SUMMARY FOR *
 RELATIONSHIP TO AREA CORNERS

SKETCH NOT TO SCALE

AUSTIN ENGINEERING, LLC

4211 HWY 81 EAST, LANCASTER, WI 53813
 PHONE 608-723-6363 FAX 608-723-6702

FIELDBOOK: SDR33
 G: \T6NR2W\34
 C: \SWA\TIE\T6NR2W\126
 CREW: BS-SB-SA-BD

DRAWN BY: SW AUSTIN
 APPROVED: LL AUSTIN

CORNER NUMBER 126