

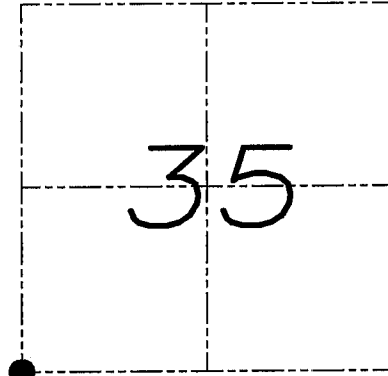
U.S. PUBLIC LAND SURVEY MONUMENT RECORD

Section 35, Town 6 North Range 2 West, Town of Fennimore, Grant County, Wisconsin

CERTIFICATE

I, Larry L. Austin, do hereby certify that the corner location on this record was determined by me and/or under my direct supervision and that this U.S. public land survey monument record is correct and complete to the best of my knowledge and belief.

Larry L. Austin
Larry L. Austin, S-1903



● = CORNER LOCATION

HISTORY OF CORNER

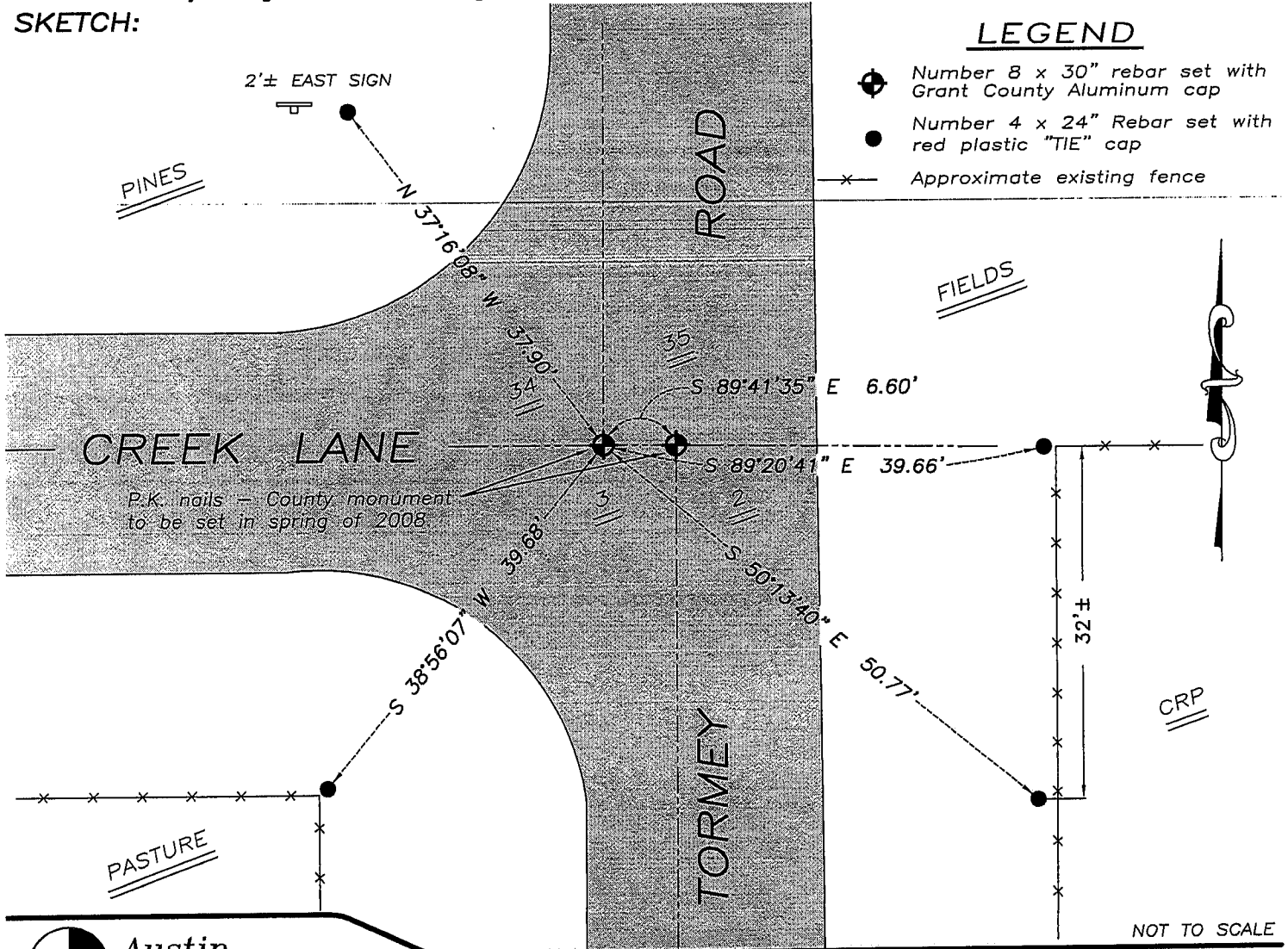
Corner was originally set by Lyon.
No other record of the corner was found.

CORNER EVIDENCE FOUND

I reset the corner at the recorded offset from the Northwest corner of Section 2, T6N R2W. Verified this location using EDM & GPS methods.

DESCRIPTION OF CORNER AND WITNESS MONUMENTS, references and accessories used to perpetuate the original or re-established location of this corner. Witnesses to monument location Bobby Sedgwick & Brad Digman & Shelby Blindert

SKETCH:



Austin Engineering LLC

4211 HWY 81 E, LANCASTER, WI 53813
PHONE 608-723-6363 FAX 608-723-6702

JOB NUMBER 07S323
FIELDBOOK: TDSR, 2707
G:\T5NR2W\02
H:\TIE\T6NR2W\125

DRAWN BY: SW AUSTIN
APPROVED: LL AUSTIN

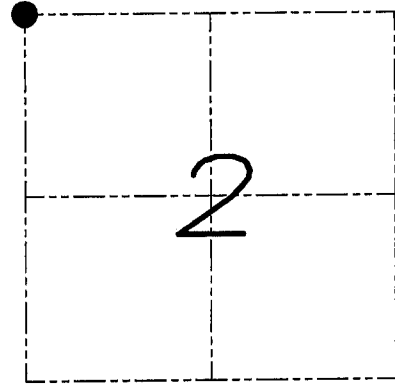
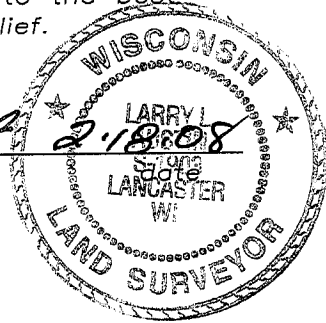
U.S. PUBLIC LAND SURVEY MONUMENT RECORD

Section 2, Town 5 North Range 2 West, Town of Liberty, Grant County, Wisconsin

CERTIFICATE

I, Larry L. Austin, do hereby certify that the corner location on this record was determined by me and/or under my direct supervision and that this U.S. public land survey monument record is correct and complete to the best of my knowledge and belief.

Larry L. Austin
Larry L. Austin, S-1903



● = CORNER LOCATION

HISTORY OF CORNER

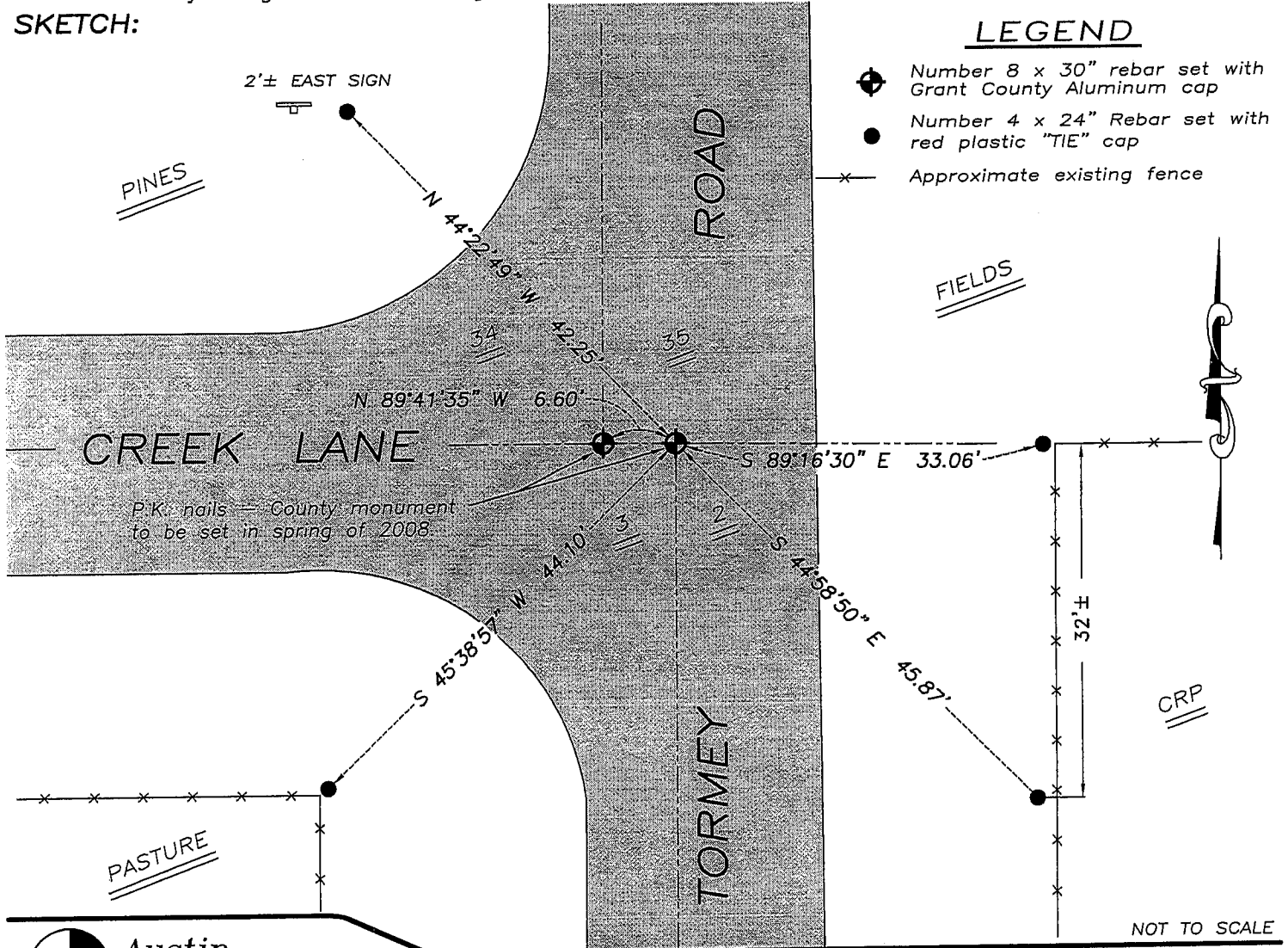
Corner was originally set in 1832 by Parke.
No other record of the corner was found.

CORNER EVIDENCE FOUND

I set the corner based on centerline North-South and a fenceline to the East. Verified this location using EDM & GPS methods.

DESCRIPTION OF CORNER AND WITNESS MONUMENTS, references and accessories used to perpetuate the original or re-established location of this corner. Witnesses to monument location Bobby Sedgwick & Brad Digman & Shelby Blindert

SKETCH:



Austin Engineering LLC

4211 HWY 81 E, LANCASTER, WI 53813
PHONE 608-723-6363 FAX 608-723-6702

JOB NUMBER 07S323
FIELDBOOK: TDSR, 2707
G:\T5NR2W\02
H:\TIE\T5NR2W\05

DRAWN BY: SW AUSTIN
APPROVED: LL AUSTIN

05