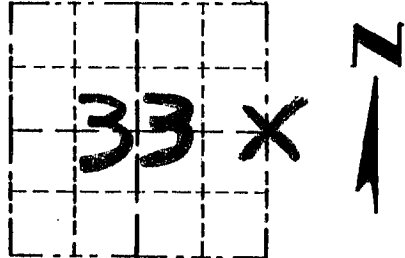


Survey Monument Record

CORNER NO. 117
 SECTION 33
 TOWN 6N
 RANGE 2W

TYPE OF MONUMENT FOUND CONCRETE Corner Post
 STATE PLANE COORDINATES: N _____
 E _____

ELEVATION — M.S.L. DATUM: _____
 THETA ANGLE: _____
 FIELD BOOK: _____
 PAGE _____

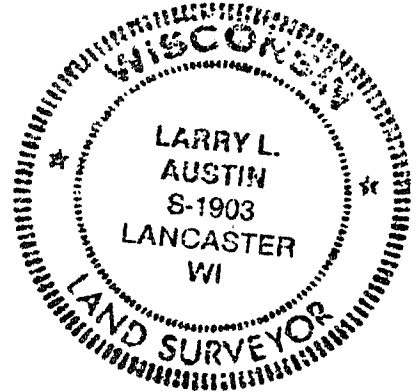


LOCATION
(Indicated by "X")

BASIS FOR MONUMENT LOCATION

(Use reverse side if necessary)

- ORIGINAL CORNER SET IN 1833 BY HARVEY PARKE
- FOUND CONCRETE CORNER POST SEAL AND ACCEPTED ITS LOCATION AFTER VERIFYING TO NE COR AND SE COR OF SAID SECTION USING EDM METHODS.



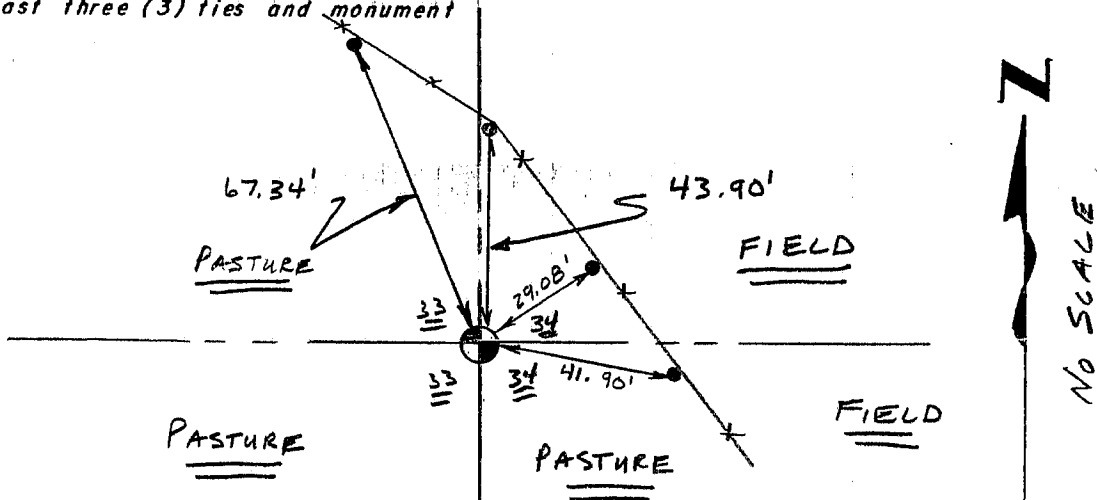
CERTIFIED CORRECT

Larry L. Austin
 Registered Land Surveyor

DATE: 10/21/96

TIE SKETCH

Show at least three (3) ties and monument



LEGEND

- FOUND CONCRETE CORNER POST
- 3/8" X 12" SPIKES SET AS TIES
- ✕ EXISTING FENCE