

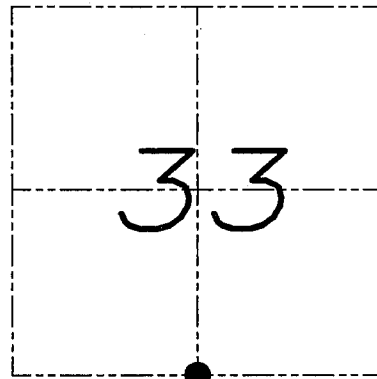
U.S. PUBLIC LAND SURVEY MONUMENT RECORD

Section 33, Town 6 North Range 2 West, Town of Fennimore, Grant County, Wisconsin

CERTIFICATE

I, Larry L. Austin, do hereby certify that the corner location on this record was determined by me and/or under my direct supervision and that this U.S. public land survey monument record is correct and complete to the best of my knowledge and belief.

Larry L. Austin
 Larry L. Austin, Surveyor
 Wisconsin
 4.10.08 date



● = CORNER LOCATION

HISTORY OF CORNER

Corner was originally set in 1832 by Sibley.
 I set and tied the corner in 2002.

CORNER EVIDENCE FOUND

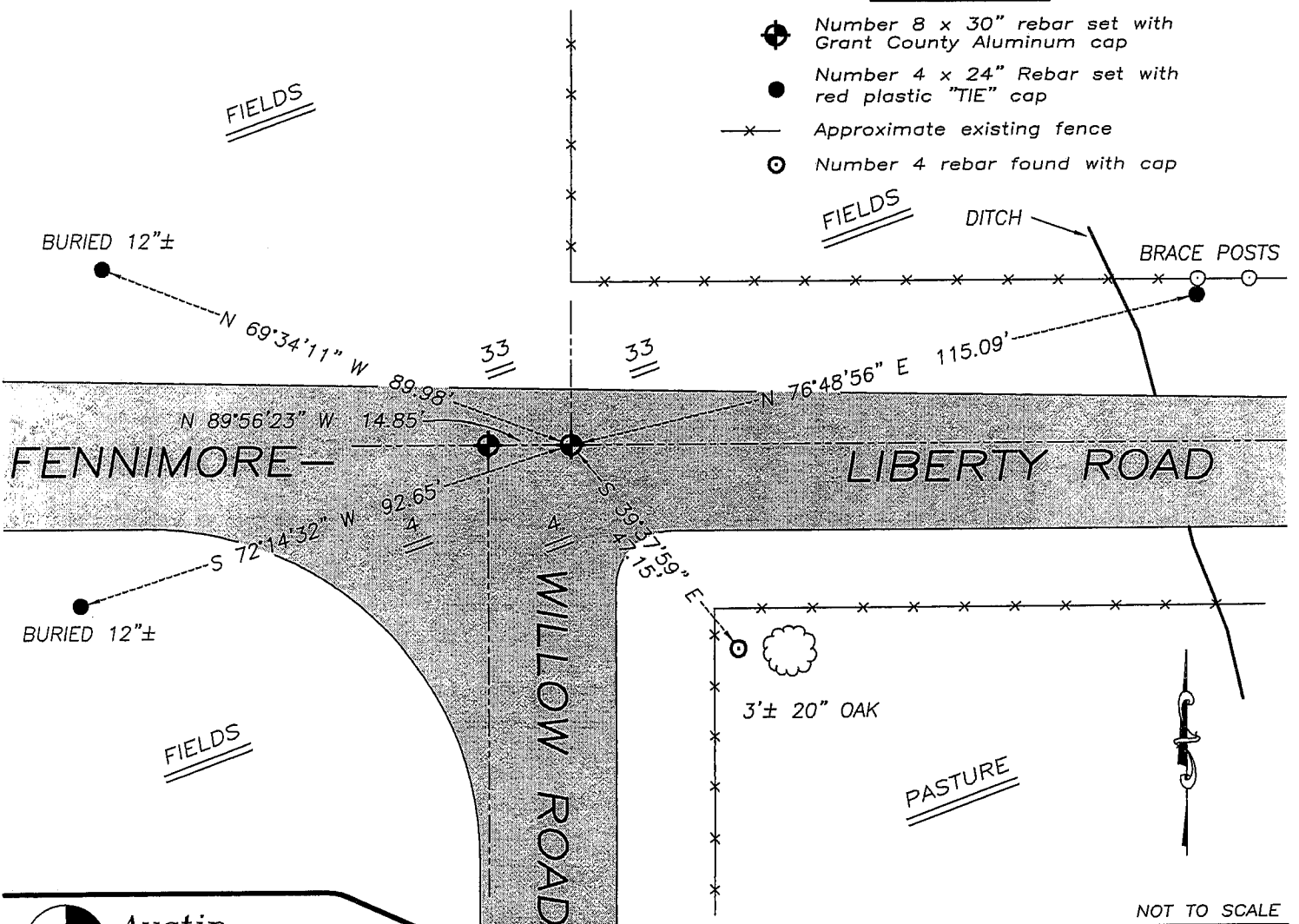
The monument and most of the ties were lost due to road construction. I reset the monument and ties as shown hereon. Verified this location using EDM & GPS methods.

DESCRIPTION OF CORNER AND WITNESS MONUMENTS, references and accessories used to perpetuate the original or re-established location of this corner. Witnesses to monument location Bobby Sedgwick & Brad Digman & Shane Austin

SKETCH:

LEGEND

- ⊕ Number 8 x 30" rebar set with Grant County Aluminum cap
- Number 4 x 24" Rebar set with red plastic "TIE" cap
- x- Approximate existing fence
- Number 4 rebar found with cap



NOT TO SCALE



Austin Engineering LLC

4211 HWY 81 E, LANCASTER, WI 53813
 PHONE 608-723-6363 FAX 608-723-6702

JOB NUMBER 07S338
 FIELDBOOK: TDSR, 2802
 G:\T6NR2W\29
 H:\TIE\T6NR2W\128

DRAWN BY: SW AUSTIN
 APPROVED: LL AUSTIN

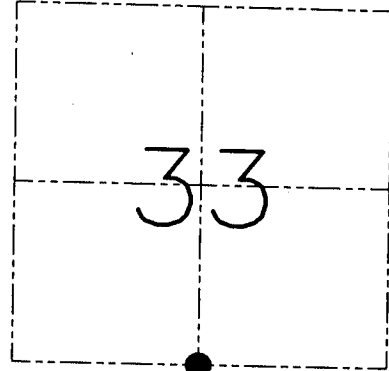
U.S. PUBLIC LAND SURVEY MONUMENT RECORD - GRANT COUNTY, WI
 Section 33, Town 6 North Range 2 West, Town of Fennimore

CERTIFICATE

I, Larry L. Austin, do hereby certify that the corner location on this record was determined by me and/or under my direct supervision and that this U.S. public land survey monument record is correct and complete to the best of my knowledge and belief.

Dated this 26th day of February, 2002

Larry L. Austin
 Larry L. Austin S-1903



● = CORNER LOCATION

HISTORY OF CORNER ESTABLISHMENT

Corner was originally set in 1832 by Sibley.
 No other record of the corner was found.

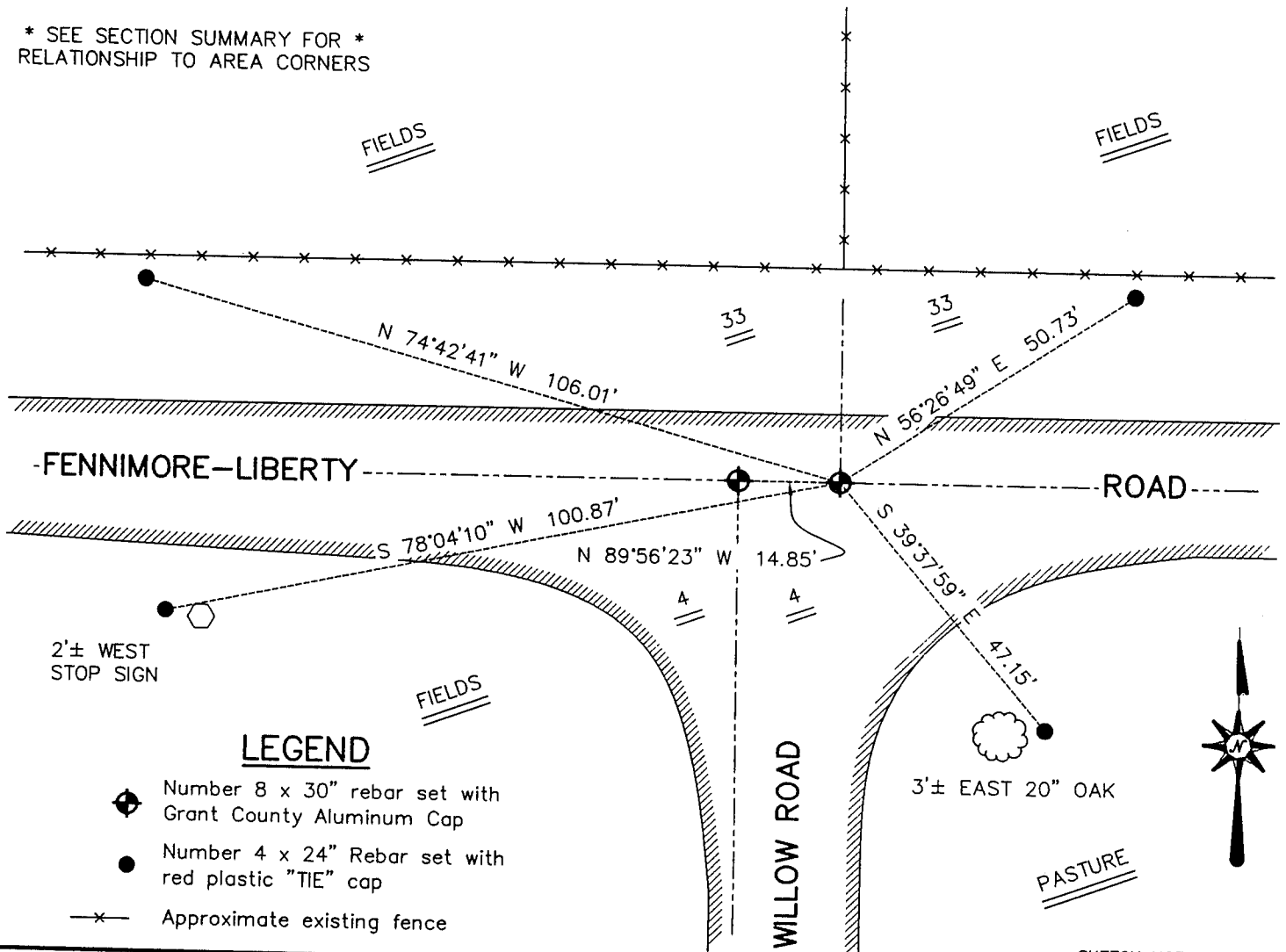
DESCRIPTION OF CORNER EVIDENCE FOUND

I reset the corner based on an occupied location - centerline road East-West and fence North. This location fit area corners. Verified this location using EDM & GPS methods.

DESCRIPTION OF CORNER AND WITNESS MONUMENTS, references and accessories used to perpetuate the original or re-established location of this corner. Witnesses to the corner location Bobby Sedgwick & Shelby Blindert & Brad Digman

SKETCH:

* SEE SECTION SUMMARY FOR *
 RELATIONSHIP TO AREA CORNERS



LEGEND

- Number 8 x 30" rebar set with Grant County Aluminum Cap
- Number 4 x 24" Rebar set with red plastic "TIE" cap
- x— Approximate existing fence

SKETCH NOT TO SCALE

AUSTIN ENGINEERING, LLC

4211 HWY B1 EAST, LANCASTER, WI 53813
 PHONE 608-723-6363 FAX 608-723-6702

FIELDBOOK: SDR33, 2207

G: \T5NR2W\09
 C: \SWA\TIE\T6NR2W\128
 CREW: BS-SB-SA-BD

DRAWN BY: SW AUSTIN
 APPROVED: LL AUSTIN

CORNER NUMBER 128

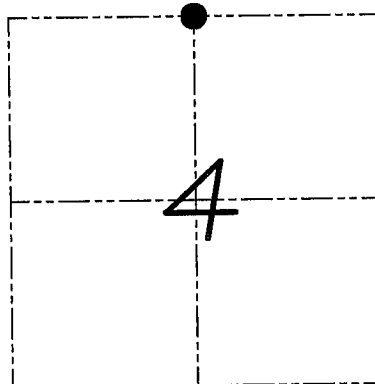
U.S. PUBLIC LAND SURVEY MONUMENT RECORD

Section 4, Town 5 North Range 2 West, Town of Liberty, Grant County, Wisconsin

CERTIFICATE

I, Larry L. Austin, do hereby certify that the corner location on this record was determined by me and/or under my direct supervision and that this U.S. public land survey monument record is correct and complete to the best of my knowledge and belief.

Larry L. Austin
 Larry L. Austin, S-LANCASTER WI
 LAND SURVEYOR
 4-10-08 date



● = CORNER LOCATION

HISTORY OF CORNER

I set the corner in 2002.
 No recent record of the corner was found.

CORNER EVIDENCE FOUND

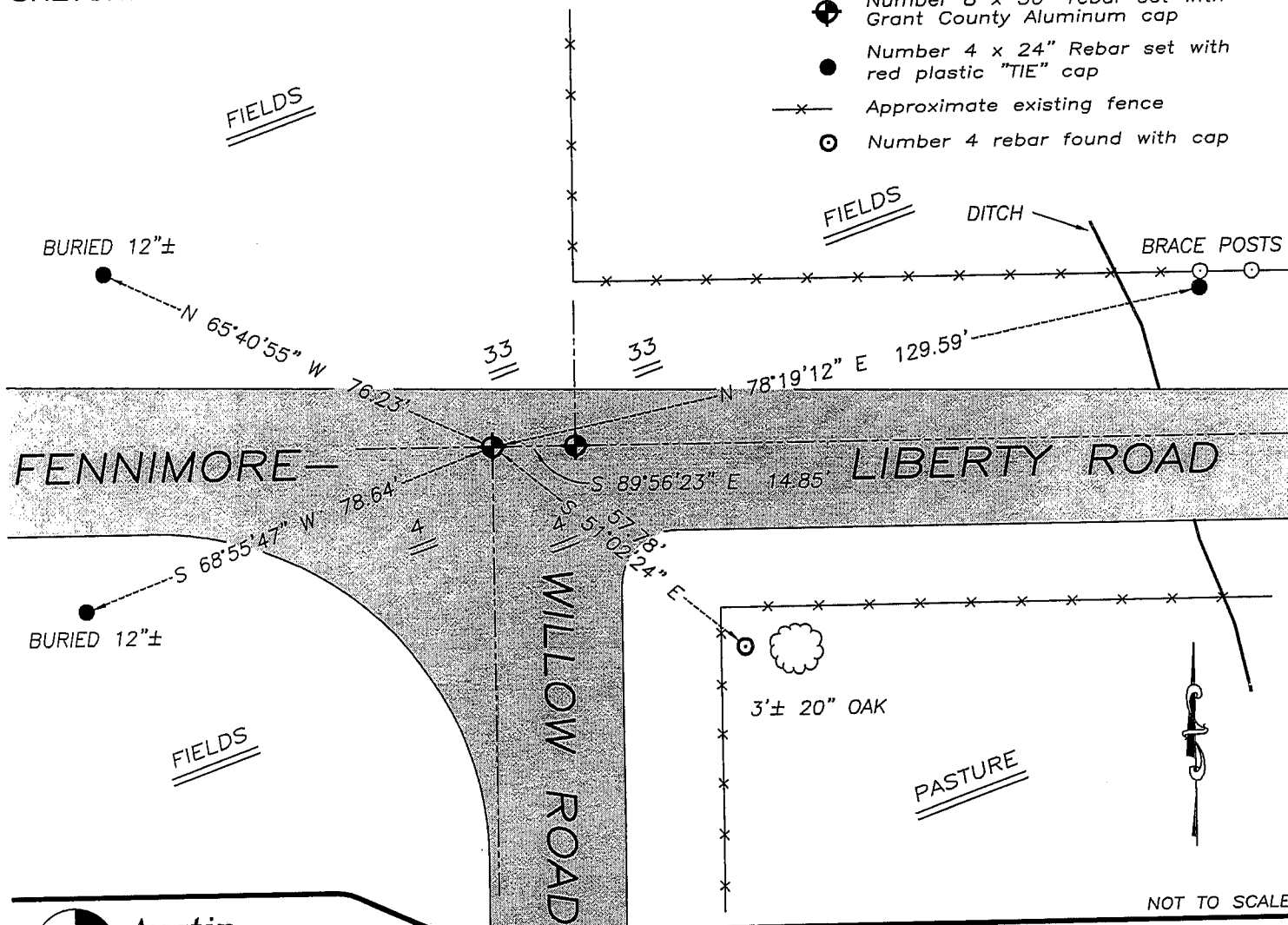
I reset the monument based on ties and coordinates because it was lost during road construction. Verified this location using EDM & GPS methods.

DESCRIPTION OF CORNER AND WITNESS MONUMENTS, references and accessories used to perpetuate the original or re-established location of this corner. Witnesses to monument location Bobby Sedgwick & Brad Digman & Shane Austin

LEGEND

SKETCH:

- ⊕ Number 8 x 30" rebar set with Grant County Aluminum cap
- Number 4 x 24" Rebar set with red plastic "TIE" cap
- x— Approximate existing fence
- ⊙ Number 4 rebar found with cap



NOT TO SCALE



Austin Engineering LLC

4211 HWY 81 E, LANCASTER, WI 53813
 PHONE 608-723-6363 FAX 608-723-6702

JOB NUMBER 07S338
 FIELDBOOK: TDSR, 2802
 G:\T6NR2W\29
 H:\TIE\T5NR2W\08

DRAWN BY: SW AUSTIN
 APPROVED: LL AUSTIN

08

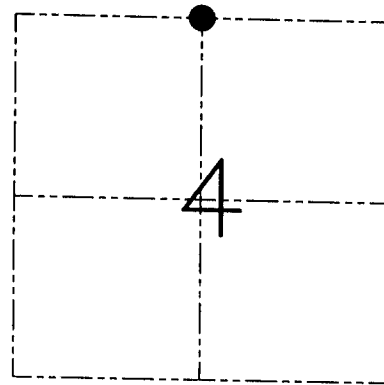
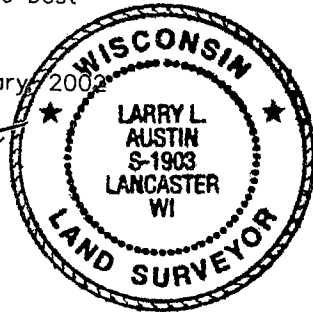
U.S. PUBLIC LAND SURVEY MONUMENT RECORD - GRANT COUNTY, WI
 Section 4, Town 5 North Range 2 West, Town of Liberty

CERTIFICATE

I, Larry L. Austin, do hereby certify that the corner location on this record was determined by me and/or under my direct supervision and that this U.S. public land survey monument record is correct and complete to the best of my knowledge and belief.

Dated this 26th day of February, 2002

Larry L. Austin
 Larry L. Austin S-1903



● = CORNER LOCATION

HISTORY OF CORNER ESTABLISHMENT

Corner was never originally set. In 1849 Stuntz set the corner with no mention of monument or witness trees.

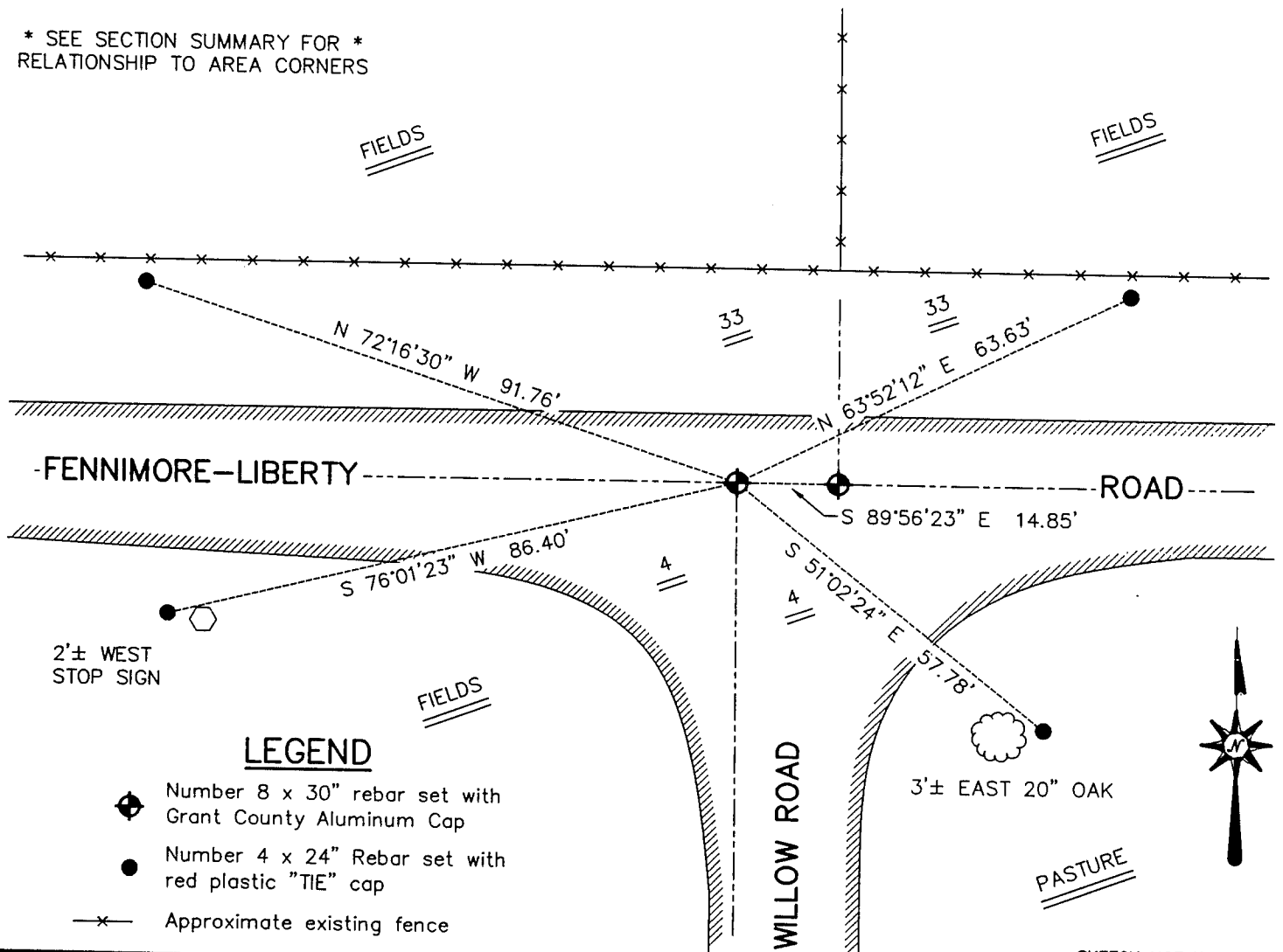
DESCRIPTION OF CORNER EVIDENCE FOUND

I reset the corner at the proportioned offset from the South 1/4 of Section 33, T6N R2W. Verified this location using EDM & GPS methods.

DESCRIPTION OF CORNER AND WITNESS MONUMENTS, references and accessories used to perpetuate the original or re-established location of this corner. Witnesses to the corner location Bobby Sedgwick & Shelby Blindert & Brad Digman

SKETCH:

* SEE SECTION SUMMARY FOR *
 RELATIONSHIP TO AREA CORNERS



LEGEND

- ◆ Number 8 x 30" rebar set with Grant County Aluminum Cap
- Number 4 x 24" Rebar set with red plastic "TIE" cap
- x— Approximate existing fence

SKETCH NOT TO SCALE

AUSTIN ENGINEERING, LLC

4211 HWY 81 EAST, LANCASTER, WI 53813
 PHONE 608-723-6363 FAX 608-723-6702

FIELDBOOK: SDR33, 2207
 G: \T5NR2W\09
 C: \SWA\TIE\T5NR2W\08
 CREW: BS-SB-SA-BD

DRAWN BY: SW AUSTIN
 APPROVED: LL AUSTIN

CORNER NUMBER 08