

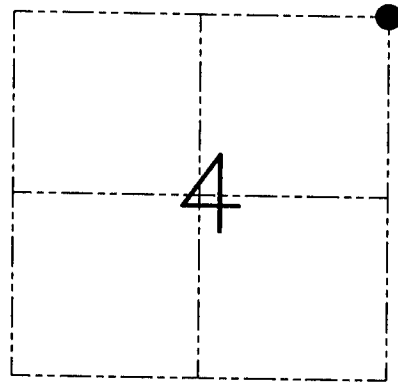
**U.S. PUBLIC LAND SURVEY MONUMENT RECORD - GRANT COUNTY, WI**  
 Section 4, Town 5 North Range 2 West, Town of Liberty

**CERTIFICATE**

I, Larry L. Austin, do hereby certify that the corner location on this record was determined by me and/or under my direct supervision and that this U.S. public land survey monument record is correct and complete to the best of my knowledge and belief.

Dated this 26th day of February, 2002

*Larry L. Austin*  
 Larry L. Austin S-1903



● = CORNER LOCATION

**HISTORY OF CORNER ESTABLISHMENT**

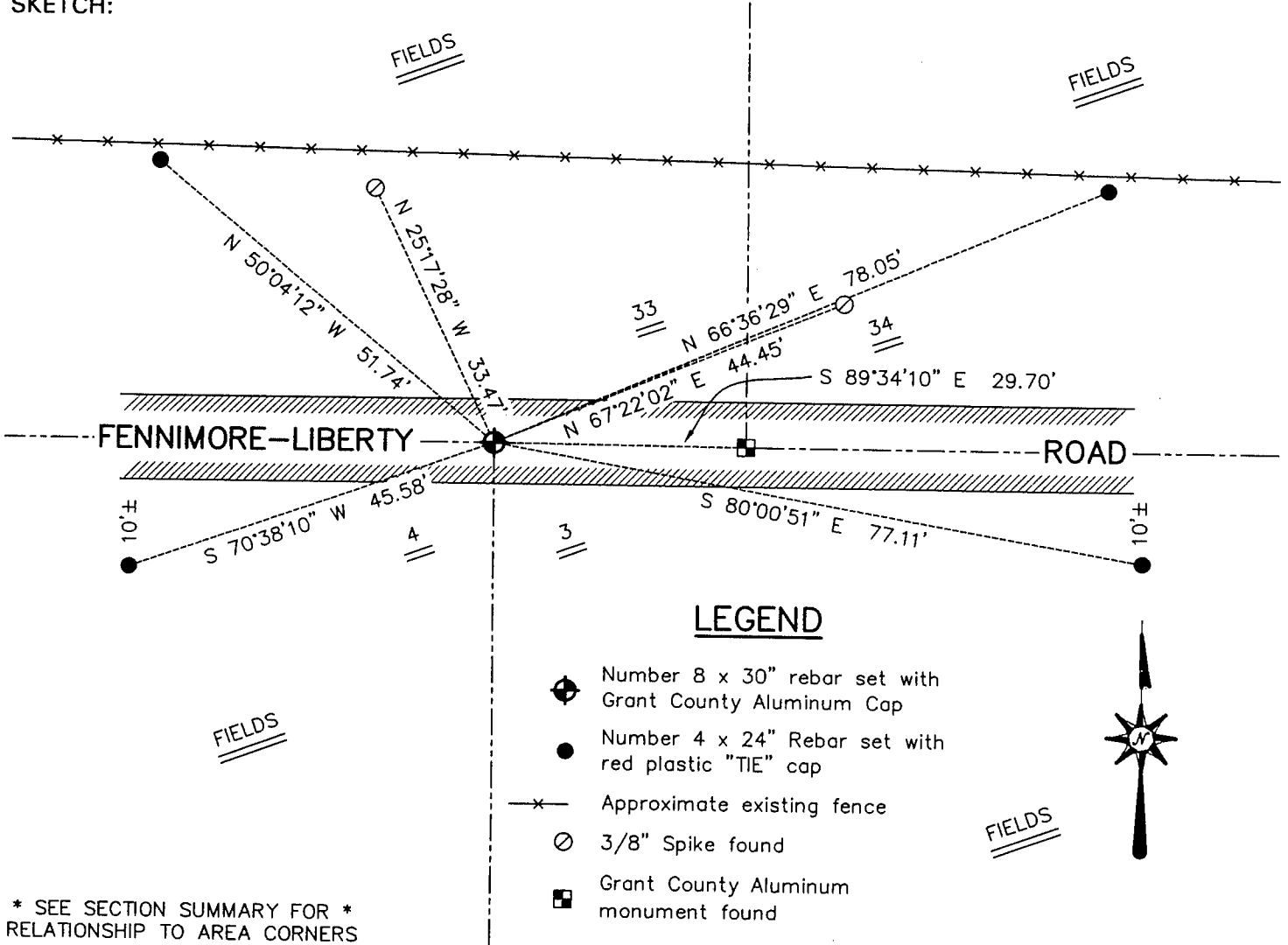
Corner was originally set in 1832 by Harvey Parke. In 1848 Stuntz tied to the corner. In 1879 Barber tied to the corner with no mention of monument or witness trees.

**DESCRIPTION OF CORNER EVIDENCE FOUND**

I reset the corner at the recorded offset from the Southeast corner of Section 33. Verified this location using EDM & GPS methods.

**DESCRIPTION OF CORNER AND WITNESS MONUMENTS**, references and accessories used to perpetuate the original or re-established location of this corner. Witnesses to the corner location Bobby Sedgwick & Shelby Blindert & Brad Digman

**SKETCH:**



\* SEE SECTION SUMMARY FOR \*  
 RELATIONSHIP TO AREA CORNERS

SKETCH NOT TO SCALE

**AUSTIN ENGINEERING, LLC**  
 4211 HWY 81 EAST, LANCASTER, WI 53813  
 PHONE 608-723-6363 FAX 608-723-6702

FIELDBOOK: SDR33, 2207  
 G: \T5NR2W\09  
 C: \SWA\TIE\T5NR2W\07  
 CREW: BS-SB-SA-BD

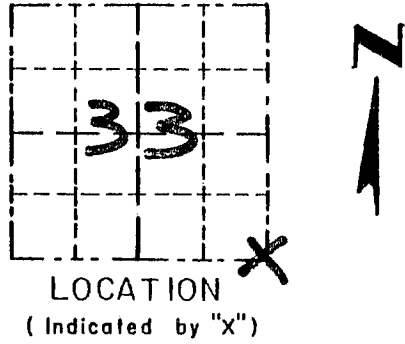
DRAWN BY: SW AUSTIN  
 APPROVED: LL AUSTIN

**CORNER NUMBER 07**

Survey Monument Record

CORNER NO. 127  
 SECTION 33  
 TOWN 6N  
 RANGE 2W

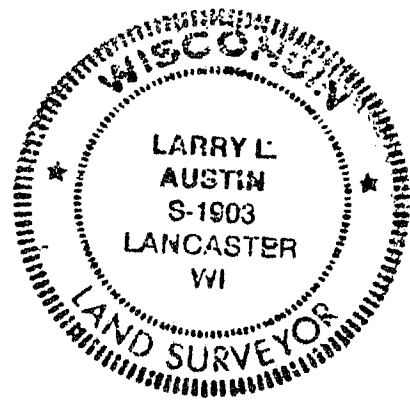
TYPE OF MONUMENT GRANT COUNTY Alum. Mon. SET  
 STATE PLANE COORDINATES: N \_\_\_\_\_  
 E \_\_\_\_\_  
 ELEVATION — M.S.L. DATUM: \_\_\_\_\_  
 THETA ANGLE: \_\_\_\_\_  
 FIELD BOOK: \_\_\_\_\_  
 PAGE \_\_\_\_\_



BASIS FOR MONUMENT LOCATION

(Use reverse side if necessary)

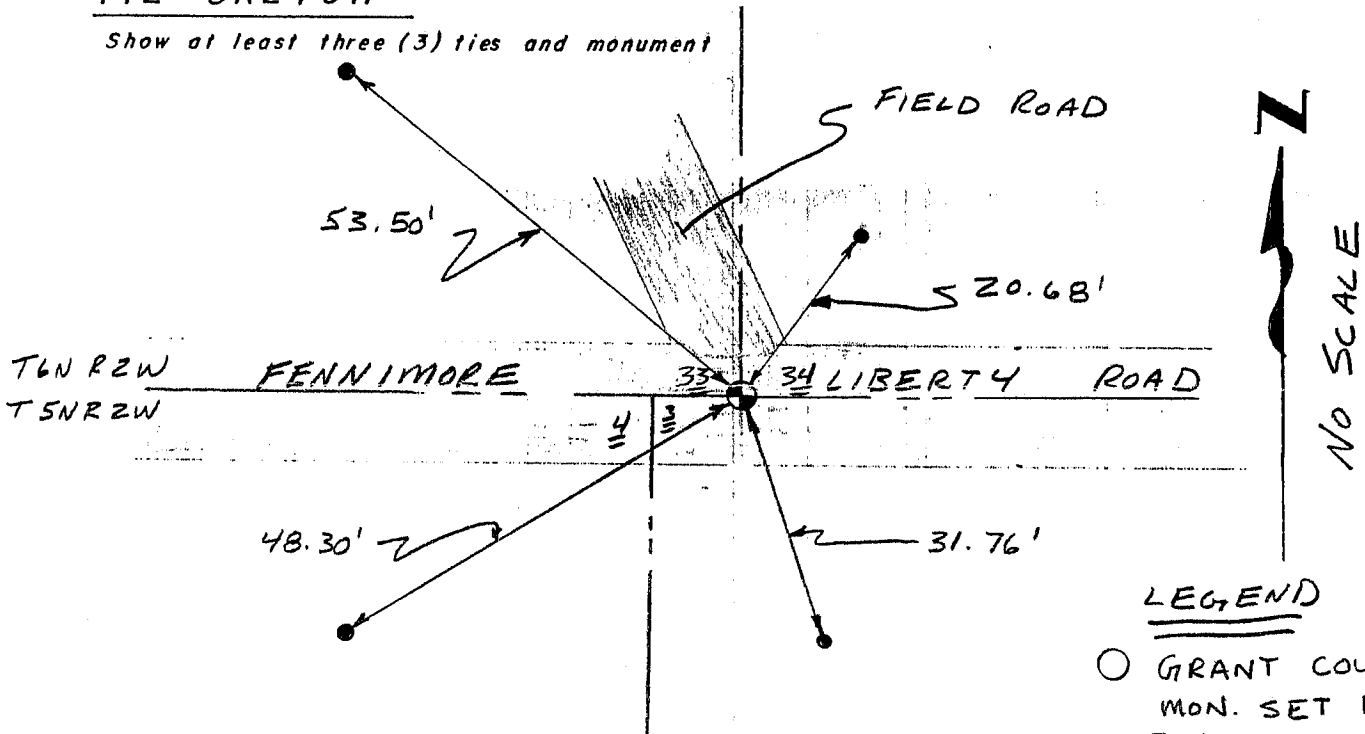
- ORIGINAL CORNER SET IN 1832 BY SIBLEY
- NORTH/SOUTH LOCATION ESTABLISHED SEAL BY EXISTING PHYSICAL EVIDENCE E E/W; EAST/WEST LOCATION ESTABLISHED BY PROPORTIONATE MEASUREMENT 1/2 MILE WEST AND 1 MILE EAST VERIFIED THIS LOCATION BY EDM TRAVERSE OF THE AREA.



CERTIFIED CORRECT  
*Larry L. Austin*  
 Registered Land Surveyor  
 DATE: 10/21/96

TIE SKETCH

Show at least three (3) ties and monument



LEGEND

- GRANT COUNTY Alum. MON. SET BELOW SURF.
- 3/8" x 12" SPIKES SET AS TIES