

**U.S. PUBLIC LAND SURVEY MONUMENT RECORD - GRANT COUNTY, WI**  
 Section 32, Town 6 North Range 2 West, Town of Fennimore

**CERTIFICATE:**

I, Aaron J. Austin, do hereby certify that the corner location on this record was determined by me and/or under my direct supervision and that this U.S. Public Land Survey Monument Record is correct and complete to the best of my knowledge and belief.

Dated this 15 day of August, 2013.

*Aaron J. Austin*  
 Aaron J. Austin, S-2922



● = CORNER LOCATION

GRANT COUNTY COORDINATES: N=558967.20 E=839027.06

HISTORY OF CORNER ESTABLISHMENT:

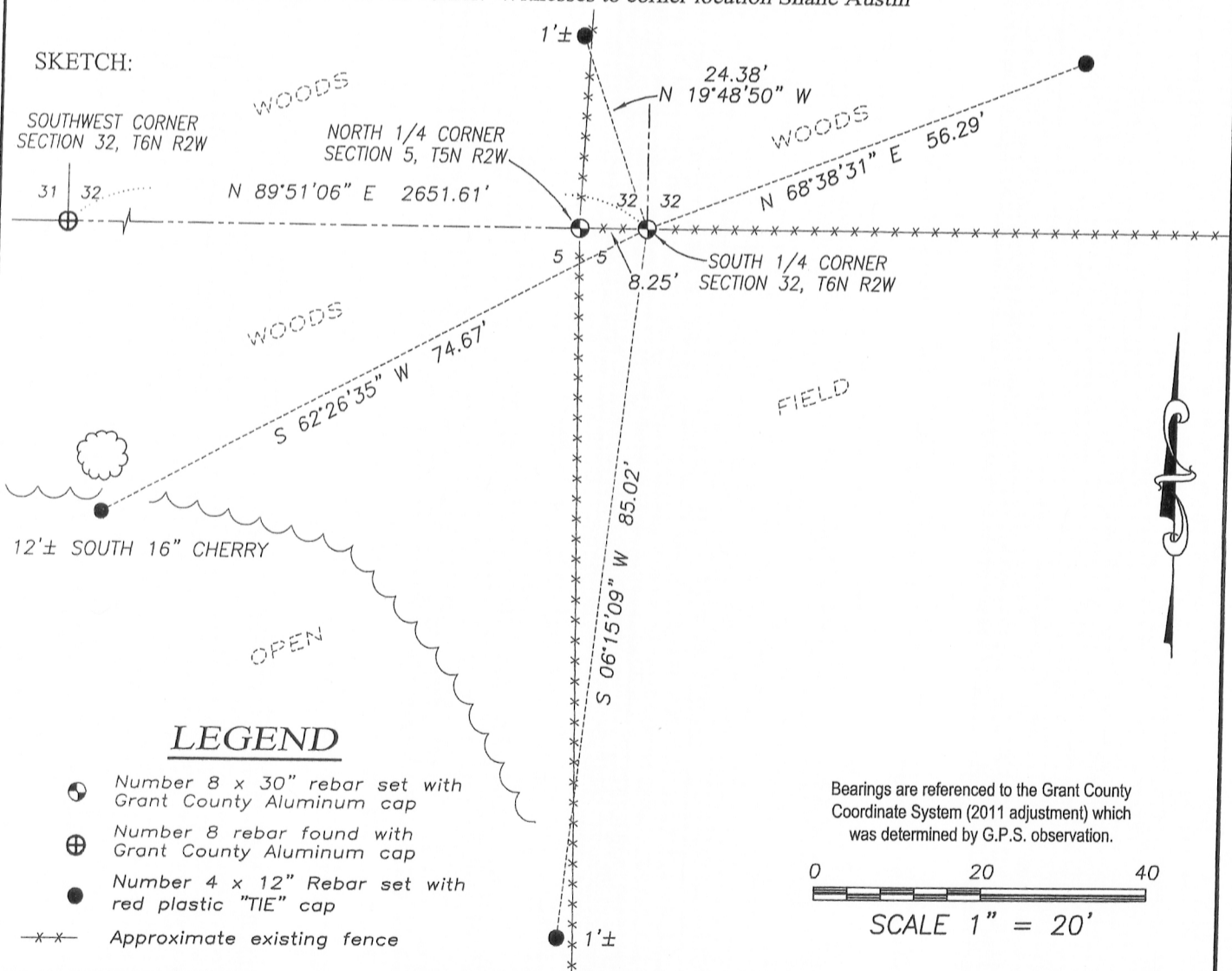
Corner originally set in 1832 by Lucius Lyon.  
 In 1875 Barber surveyed to the corner filed in Book B, Page 540.

DESCRIPTION OF CORNER EVIDENCE FOUND:

Corner was set in an existing fence line at the prorated offset from the North 1/4 corner of Section 5, T5N R2W.

DESCRIPTION OF CORNER AND WITNESS MONUMENTS, references and accessories used to perpetuate the original or re-established location of this corner. Witnesses to corner location Shane Austin

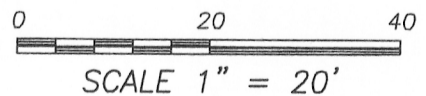
**SKETCH:**



**LEGEND**

- ⊕ Number 8 x 30" rebar set with Grant County Aluminum cap
- ⊕ Number 8 rebar found with Grant County Aluminum cap
- Number 4 x 12" Rebar set with red plastic "TIE" cap
- x-x- Approximate existing fence

Bearings are referenced to the Grant County Coordinate System (2011 adjustment) which was determined by G.P.S. observation.



SCALE 1" = 20'



**Austin Engineering LLC**  
 austinengineeringllc.com

4211 HWY 81 E, LANCASTER, WI 53813  
 PHONE: 608-723-6363 FAX: 608-723-6702

JOB NO: 11S192  
 G:\GRANTDOT\HWY61B  
 H:\TIE\T6NR2W\130

FIELDBOOK: TDSR  
 DRAWN BY: SW AUSTIN  
 CREW: SW AUSTIN

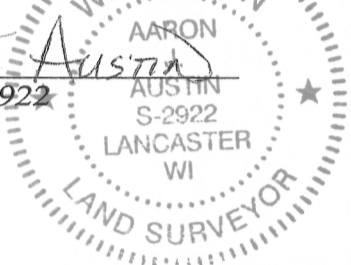
# U.S. PUBLIC LAND SURVEY MONUMENT RECORD - GRANT COUNTY, WI

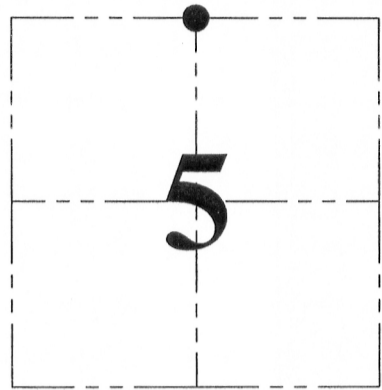
Section 5, Town 5 North Range 2 West, Town of Liberty

**CERTIFICATE:**

I, Aaron J. Austin, do hereby certify that the corner location on this record was determined by me and/or under my direct supervision and that this U.S. Public Land Survey Monument Record is correct and complete to the best of my knowledge and belief.

Dated this 15 day of August, 2013.

*Aaron J. Austin*  
 Aaron J. Austin, S-2922  




● = CORNER LOCATION

GRANT COUNTY COORDINATES: N=558967.18 E=839018.81

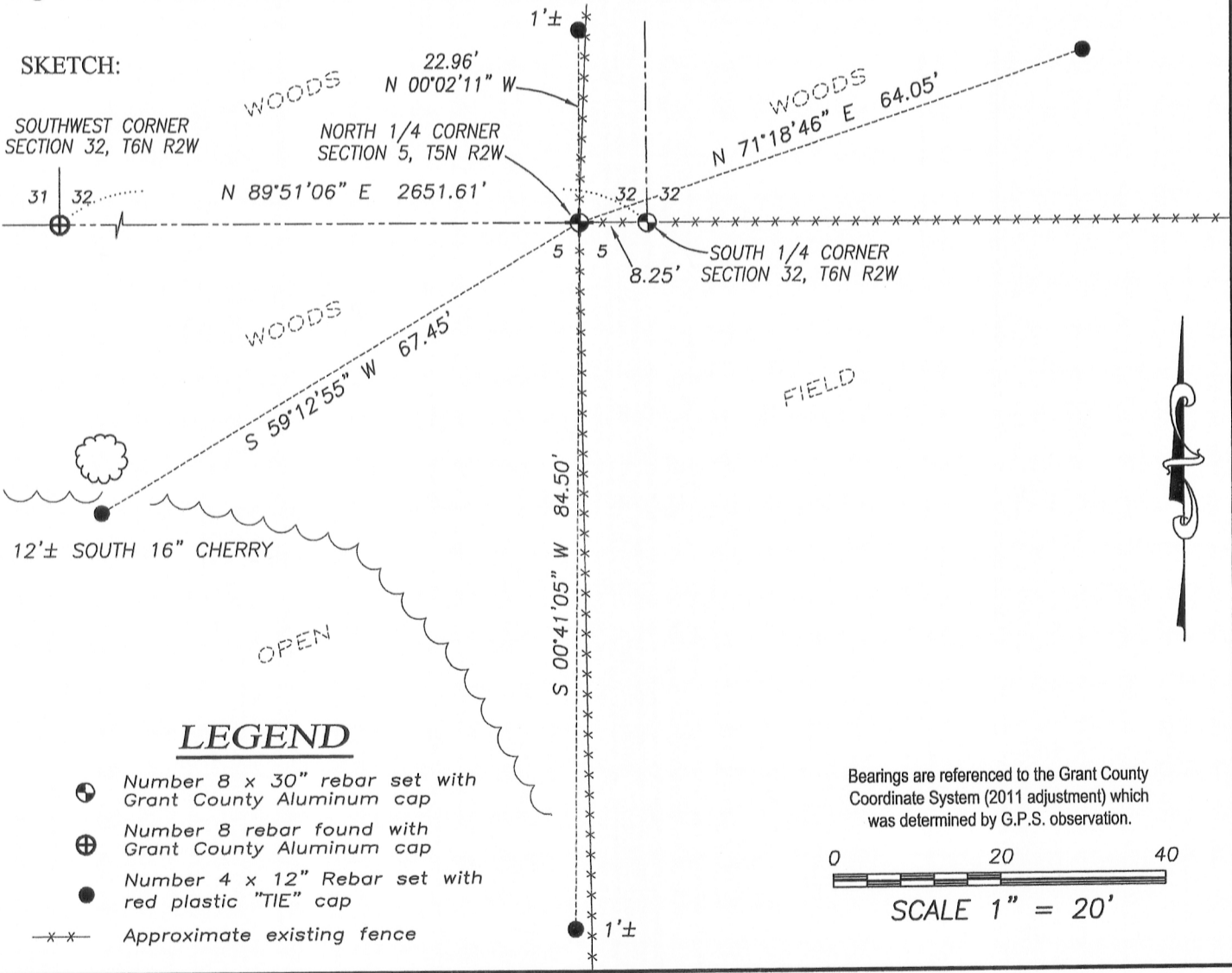
HISTORY OF CORNER ESTABLISHMENT:

Corner was not originally set.

DESCRIPTION OF CORNER EVIDENCE FOUND:

Corner set at existing fence corner on the South line of Section 32, T6N R2W.  
 Location was verified by G.P.S. and E.D.M. methods.

DESCRIPTION OF CORNER AND WITNESS MONUMENTS, references and accessories used to perpetuate the original or re-established location of this corner. Witnesses to corner location Shane Austin



 **Austin Engineering LLC**  
 austinengineeringllc.com  
 4211 HWY 81 E, LANCASTER, WI 53813  
 PHONE: 608-723-6363 FAX: 608-723-6702

JOB NO: 11S192  
 G:\GRANTDOT\HWY61B  
 H:\TIE\T5NR2W\10

FIELDBOOK: TDSR  
 DRAWN BY: SW AUSTIN  
 CREW: SW AUSTIN