

# U.S. PUBLIC LAND SURVEY MONUMENT RECORD - GRANT COUNTY, WI

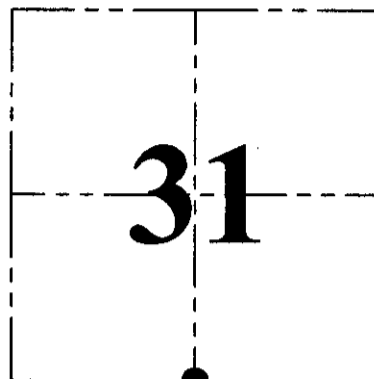
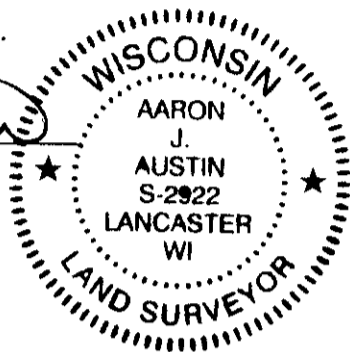
Section 31, Town 6 North Range 3 West, Town of Mount Ida

**CERTIFICATE:**

I, Aaron J. Austin, Wisconsin Professional Land Surveyor, do hereby certify that the corner location on this record was determined by me and/or under my direct supervision and that this U.S. Public Land Survey Monument Record is correct and complete to the best of my knowledge and belief.

Dated this 8th day of July, 2015.

*Aaron J. Austin*  
 Aaron J. Austin, S-2922



● = CORNER LOCATION

**HISTORY OF CORNER ESTABLISHMENT:**

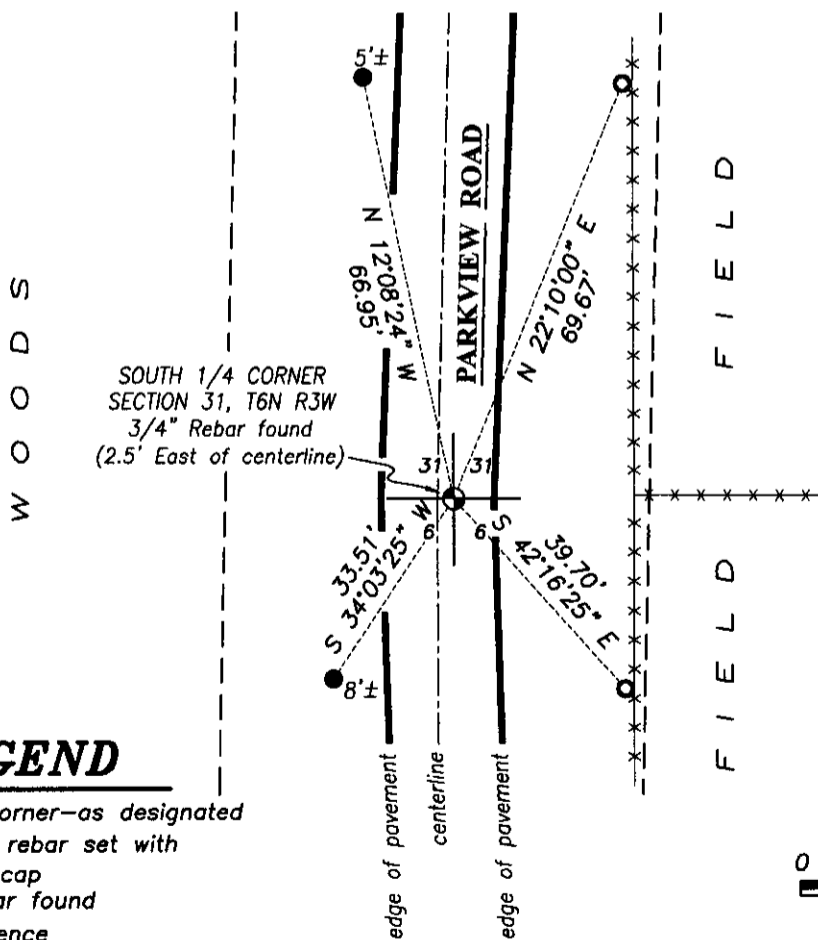
- 1832-Sibley set original corner.
- 1882-J.C. Scott tied to the corner on a Survey filed in Book D, Page 122.
- 1987-Douglas Malliet reset the corner on a Survey filed in Book L, Page 357.
- 1997-Larry Austin reset the corner and prepared a Survey Monument Record for this corner.
- 1997-Larry Austin tied to the corner on a Survey filed in Book Z, Page 73.
- 2005-Larry Austin tied to the corner on a Survey filed in Book 18, Page 11.
- 2003-Larry Austin tied to the corner on a Survey filed in Book 14, Page 45.

**DESCRIPTION OF CORNER EVIDENCE FOUND:**

I found a 3/4" rebar in place at the corner location. I was unable to recover two witness corners and set 3 new ones as shown hereon. I verified this corner location with E.D.M. and G.P.S. methods.

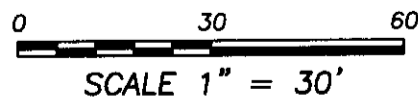
**DESCRIPTION OF CORNER AND WITNESS MONUMENTS, references and accessories used to perpetuate the original or re-established location of this corner. Witnesses to corner location Shane Austin and Brandon Austin.**

**SKETCH:**



**LEGEND**

- Section Corner—as designated
- 1/2"x12" rebar set with red "tie" cap
- 1/2" rebar found
- x-x- Existing fence



**Austin Engineering LLC**  
 austinengineeringllc.com

4211 HWY 81 E, LANCASTER, WI 53813  
 PHONE: 608-723-6363 FAX: 608-723-6702

JOB NO: 15a079  
 H:\CRD\15a079  
 H:\TIE\T6NR3W\132

FIELDBOOK: TDSR  
 DRAWN BY: AJ AUSTIN  
 CREW: SW AUSTIN, BL AUSTIN

# U.S. PUBLIC LAND SURVEY MONUMENT RECORD - GRANT COUNTY, WI

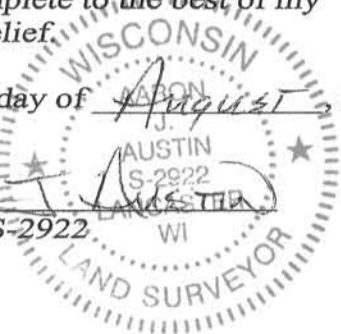
Section 31, Town 6 North Range 2 West, Town of Fennimore

**CERTIFICATE:**

I, Aaron J. Austin, do hereby certify that the corner location on this record was determined by me and/or under my direct supervision and that this U.S. Public Land Survey Monument Record is correct and complete to the best of my knowledge and belief.

Dated this 15 day of August, 2013.

*Aaron J. Austin*  
 Aaron J. Austin, S-2922



● = CORNER LOCATION

GRANT COUNTY COORDINATES: N=558967.43 E=833724.16

**HISTORY OF CORNER ESTABLISHMENT:**

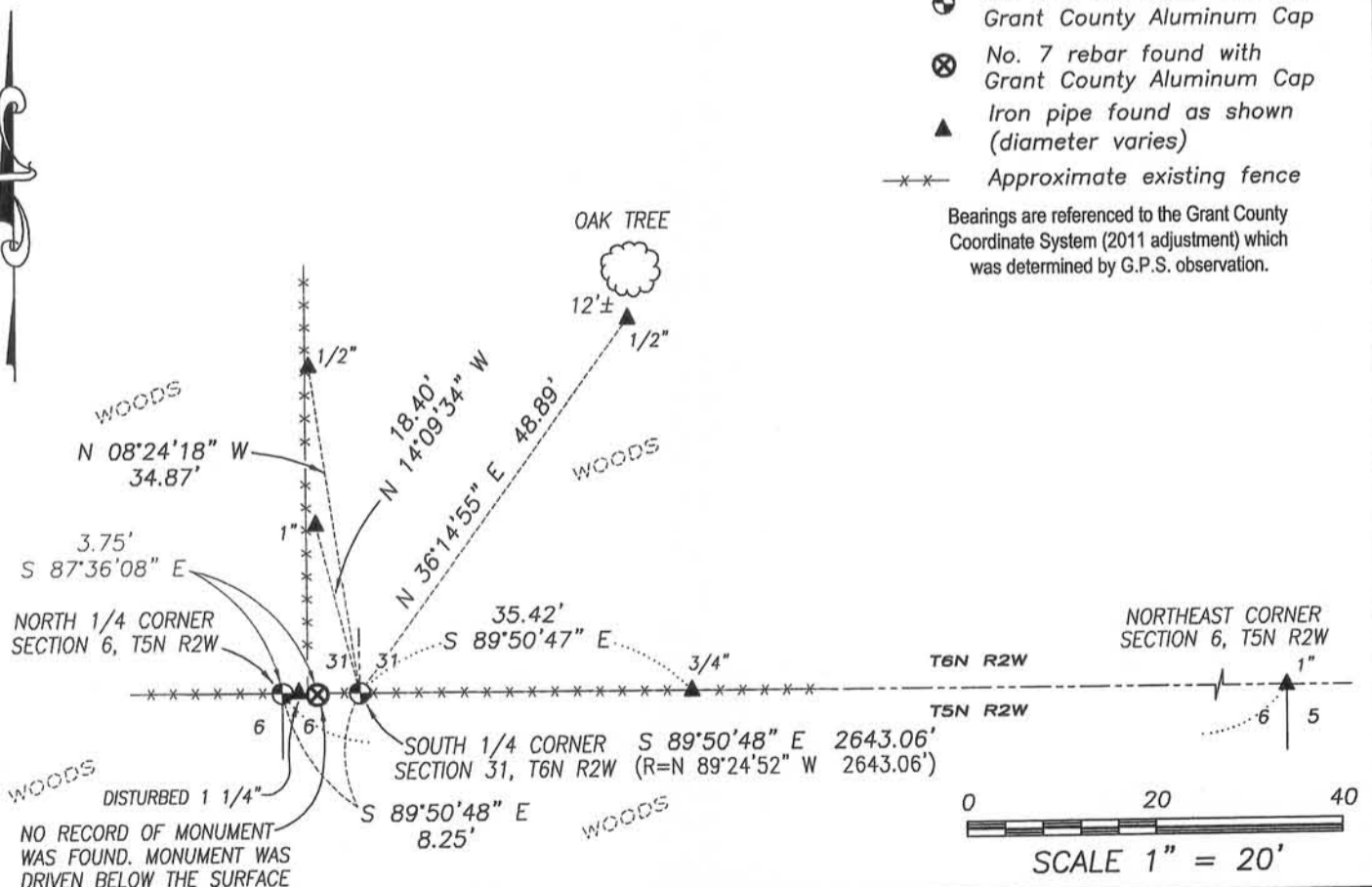
Corner originally set in 1832 by Lucius Lyon. Michael LaRosa showed this corner on a tie sheet dated 8-29-1995. No other record found for this corner.

**DESCRIPTION OF CORNER EVIDENCE FOUND:**

Michael LaRosa showed this corner on a tie sheet dated 8-29-1995. This corner was not monumented by LaRosa. I set this corner at the prorated offset from the North 1/4 corner of Section 6, T5N, R2W on the North line of said Section 6. It should be noted that I did find a No. 7 rebar with a Grant County Aluminum Cap. I did not accept this corner. No U.S. Public Land Survey Monument record was found and no record of a survey was found showing this monument, therefore, I could not determine which corner this monument intended to mark. I left the monument in place and drove it below the surface. Corner location was verified by E.D.M. and G.P.S methods.

**DESCRIPTION OF CORNER AND WITNESS MONUMENTS, references and accessories used to perpetuate the original or re-established location of this corner. Witnesses to corner location Shane Austin**

**SKETCH:**



4211 HWY 81 E, LANCASTER, WI 53813  
 PHONE: 608-723-6363 FAX: 608-723-6702

JOB NO: 11S192  
 G:\GRANTDOT\HWY61B  
 H:\TIE\T6NR2W\132

FIELDBOOK: TDSR  
 DRAWN BY: SW AUSTIN  
 CREW: SW AUSTIN



# Survey Monument Record

TYPE OF MONUMENT NO MONUMENT PLACED  
 STATE PLANE COORDINATES: N \_\_\_\_\_  
 E \_\_\_\_\_  
 ELEVATION — M.S.L. DATUM: \_\_\_\_\_  
 THETA ANGLE: \_\_\_\_\_  
 FIELD BOOK: 95-5, 7 (955-782)  
 PAGE \_\_\_\_\_

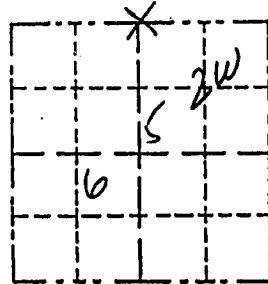
CORNER NO. \_\_\_\_\_  
 SECTION 6  
 TOWN 5N  
 RANGE 2W

OCT 16 1995

## BASIS FOR MONUMENT LOCATION

(Use reverse side if necessary)

Show info such as: History of corner, with reference to Vol. and pg., dates, surveyor; exact description of monument replaced; if location computed, by taped or EDM traverse; landowner, remarks, etc.



LOCATION  
(Indicated by "X")

- FOUND PERPETUATED LOCATION
- OBLITERATED EVIDENCE LOCATION
- LOST CORNER (RESTORED BY PROPORTIONATE METHODS)

The most recent survey record related to this corner is a survey by Laurence Schmit dated 1/4/79 which was tied to an occupied corner north of this corner. Physical evidence is a 4 way fence intersection with a 3 way fence intersection approximately 1 rod north. Physical evidence exists of a possible ancient roadbed along the town line and a ridge line about 1 rod south of the occupied town line was searched for evidence because it fell closer to the record (Orig. Cont.). distance from the 40 corner to the south. The occupied town line fits nearly perfectly (proportionately) between the 40 corner to the north and the 40 corner to the south and was accepted for northings. The eastings were determined by the projection of existing

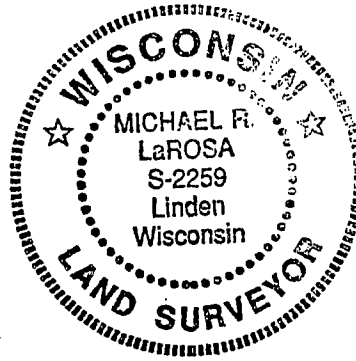
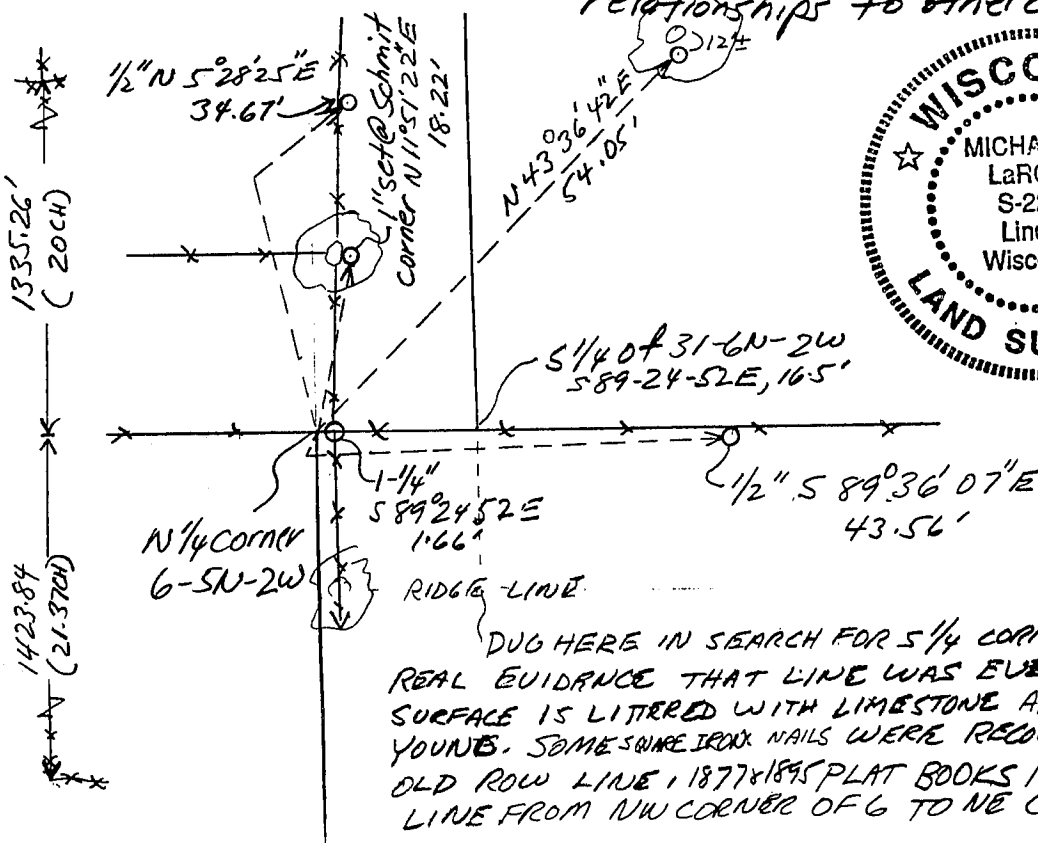
CERTIFIED CORRECT TO THE BEST OF MY KNOWLEDGE AND BELIEF

Michael R. LaRosa  
 Registered Land Surveyor

DATE: 8/29/95

## TIE SKETCH

Show at least three (4) ties and monument Tie Sheet for NE corner (This Date) for relationships to other corners.



1" = 20' ±

### Legend

- fence
- Iron Pipe Set  
Size as noted
- ⊙ Large Diameter  
OAK TREE
- ( ) recorded AS