

U.S. PUBLIC LAND SURVEY MONUMENT RECORD - GRANT COUNTY, WI

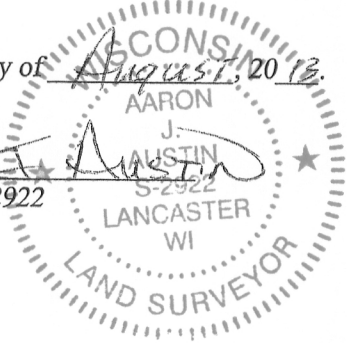
Section 31, Town 6 North Range 2 West, Town of Fennimore

CERTIFICATE:

I, Aaron J. Austin, do hereby certify that the corner location on this record was determined by me and/or under my direct supervision and that this U.S. Public Land Survey Monument Record is correct and complete to the best of my knowledge and belief.

Dated this 15 day of August, 2013.

Aaron J. Austin
 Aaron J. Austin, S-2922



● = CORNER LOCATION

GRANT COUNTY COORDINATES: N=558960.33 E=836375.46

HISTORY OF CORNER ESTABLISHMENT:

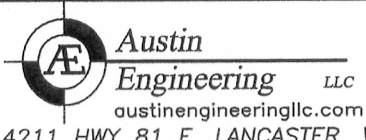
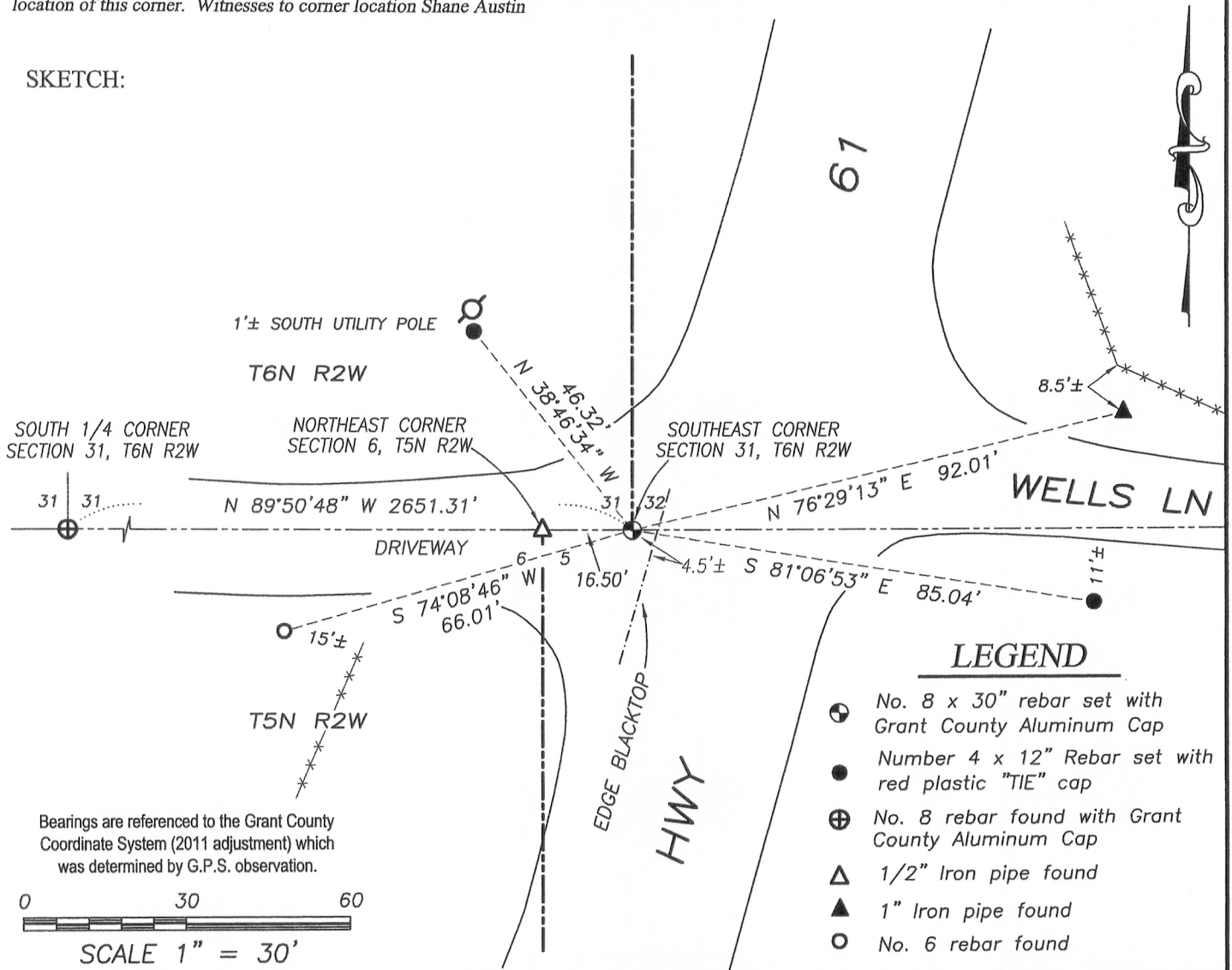
Corner was originally set in 1832 by Lucius Lyon. In 1875 Barber surveyed to the corner filed in Book B, Page 540. Corner was shown on Plat of Right of Way Division Job No. 9577 (No monument stated). No other record was found for this corner.

DESCRIPTION OF CORNER EVIDENCE FOUND:

Corner was set at the recorded offset from the Northeast corner of Section 6, T5N R2W and on a line projected from the South 1/4 corner of Section 31 and the Northeast corner of said Section 6. Corner location was verified by G.P.S. Observation.

DESCRIPTION OF CORNER AND WITNESS MONUMENTS, references and accessories used to perpetuate the original or re-established location of this corner. Witnesses to corner location Shane Austin

SKETCH:



4211 HWY 81 E, LANCASTER, WI 53813
 PHONE: 608-723-6363 FAX: 608-723-6702

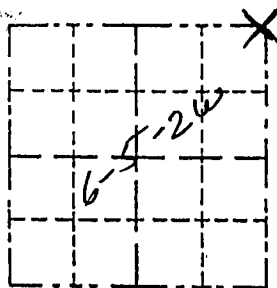
JOB NO: 11S192
 G:\GRANTDOT\HWY61B
 H:\TIE\T6NR2W\131

FIELDBOOK: TDSR
 DRAWN BY: SW AUSTIN
 CREW: SW AUSTIN

Survey Monument Record

CORNER NO. 6 91
 SECTION 6 00T 16 185
 TOWN 5N
 RANGE 2W

TYPE OF MONUMENT 1" Iron Pipe
 STATE PLANE COORDINATES: N _____
 E _____
 ELEVATION — M.S.L. DATUM: _____
 THETA ANGLE: _____
 FIELD BOOK: 95-5, 7 (955-181)
 PAGE _____



LOCATION
 (Indicated by "X")

- FOUND PERPETUATED LOCATION
- OBLITERATED EVIDENCE LOCATION
- LOST CORNER (RESTORED BY PROPORTIONATE METHODS)

BASIS FOR MONUMENT LOCATION

(Use reverse side if necessary)

Show info such as: History of corner, with reference to Vol. and pg., dates, surveyor; exact description of monument replaced; if location computed, by taped or EDM traverse; landowner, remarks, etc.

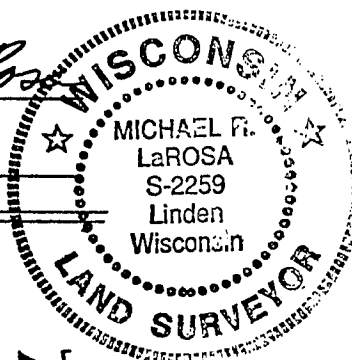
Evidence used FOR CORNER COMPUTATIONS

There are no recent survey records of this corner. Physical evidence is a town road to the east, a driveway to the west and fence to south at the corner location. After a rather extensive traverse of the surrounding area for evidence the corner location was determined by a combination of prorates (see diagram at left). The main coordinates used for calculations are noted with a *. The corner fell in the centerline of the drive + west.

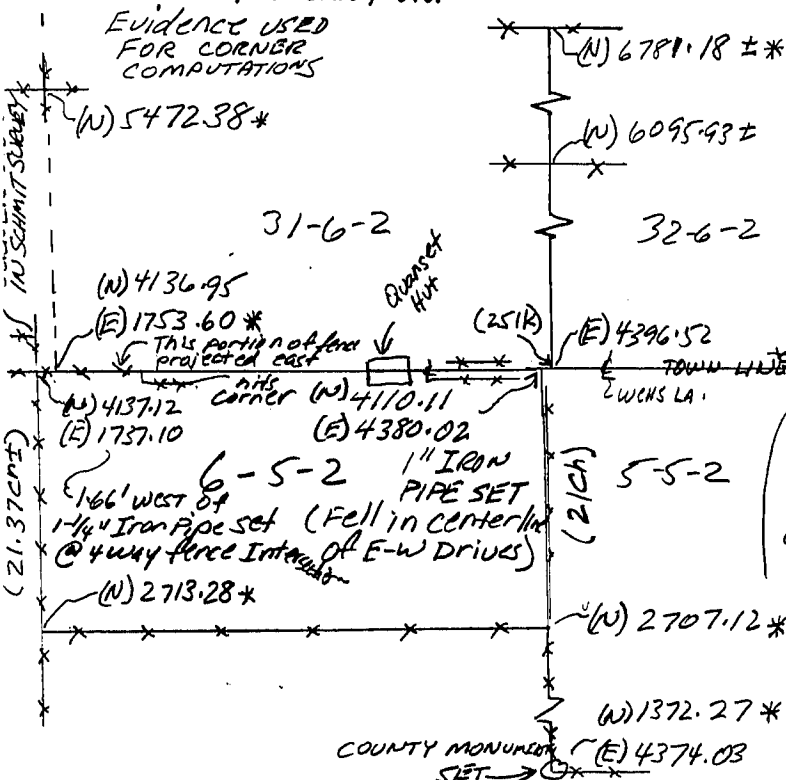
CERTIFIED CORRECT TO THE BEST OF MY KNOWLEDGE AND BELIEF

Michael R. LaRosa
 Registered Land Surveyor

DATE: 8/29/95



(N) 6751.85
 This corner appears to be 100' or South
 (N) Schmitt Survey
 (21.37cmt)



TIE SKETCH

Show at least three (4) ties and monument

