

# GRANT COUNTY CERTIFIED LAND CORNER

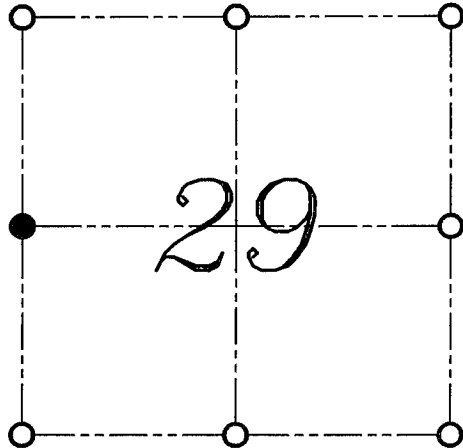
CORNER NUMBER 95

**CERTIFICATE:**

I, LARRY L. AUSTIN, DO HEREBY CERTIFY THAT ON 19th DAY OF OCTOBER, 1999, I FOUND EVIDENCE OF THE WEST 1/4 CORNER OF SECTION 29, TOWN 6 NORTH, RANGE 2 WEST, OF THE FOURTH PRINCIPAL MERIDIAN, AND I RE-ESTABLISHED SAID CORNER ACCORDING TO THE WISCONSIN STATUTES AS SHOWN AND DESCRIBED HEREON.

DATED THIS 1st DAY OF NOVEMBER, 1999

*Larry L. Austin*  
LARRY L. AUSTIN S-1903



● = CORNER LOCATION

WEST 1/4 CORNER OF  
SECTION 29, T 6 N R 2 W  
TOWN OF FENNIMORE

**HISTORY OF ORIGINAL CORNER ESTABLISHMENT:**

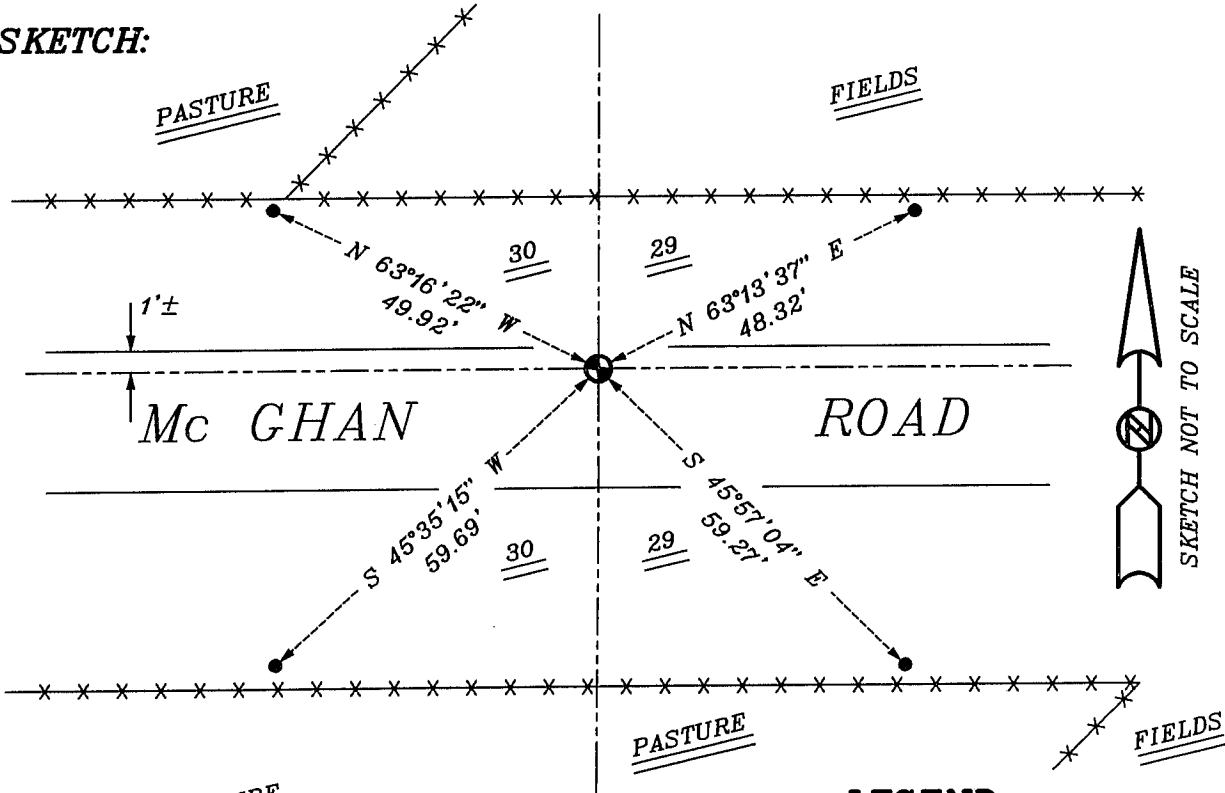
CORNER WAS SET IN 1832 BY HARVEY PARKE.  
IN 1850 GEO STUNTZ FOUND THE ORIGINAL POST.

**DESCRIPTION OF CORNER EVIDENCE FOUND:**

NO EVIDENCE OF ORIGINAL CORNER FOUND DO TO ROAD CONSTRUCTION. I RESET THE CORNER ACCORDING TO FOUND OCCUPATIONAL EVIDENCE OF THE DESCRIPTION RECORDED IN VOLUME 485, AT PAGE 212. VERIFIED THIS LOCATION USING E.D.M. AND G.P.S. METHODS.

**DESCRIPTION OF CORNER AND WITNESS MONUMENTS, REFERENCES AND ACCESSORIES USED TO PERPETUATE THE ORIGINAL OR RE-ESTABLISHED LOCATION OF THIS CORNER:**  
WITNESS TO THE CORNER LOCATION: BOBBY SEDGWICK ; SHELBY BLINDERT

**SKETCH:**



**LEGEND**

- NUMBER 6 X 24" REBAR WITH GRANT COUNTY ALUMINUM CAP
- NUMBER 4 X 24" REBAR SET WITH RED PLASTIC CAP
- \*- EXISTING FENCE LOCATION