

**U.S. PUBLIC LAND SURVEY MONUMENT RECORD - GRANT COUNTY, WI**

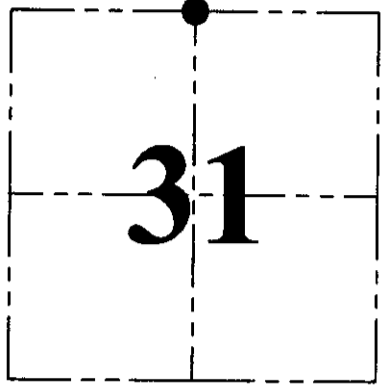
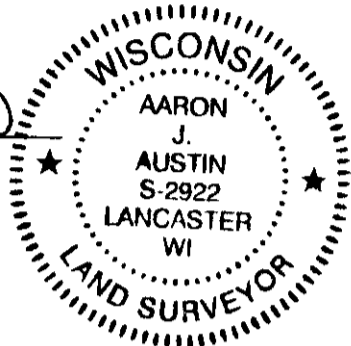
Section 31, Town 6 North Range 3 West, Town of Mount Ida

**CERTIFICATE:**

I, Aaron J. Austin, Wisconsin Professional Land Surveyor, do hereby certify that the corner location on this record was determined by me and/or under my direct supervision and that this U.S. Public Land Survey Monument Record is correct and complete to the best of my knowledge and belief.

Dated this 8th day of July, 2015.

*Aaron J. Austin*  
 Aaron J. Austin, S-2922



● = CORNER LOCATION

HISTORY OF CORNER ESTABLISHMENT:

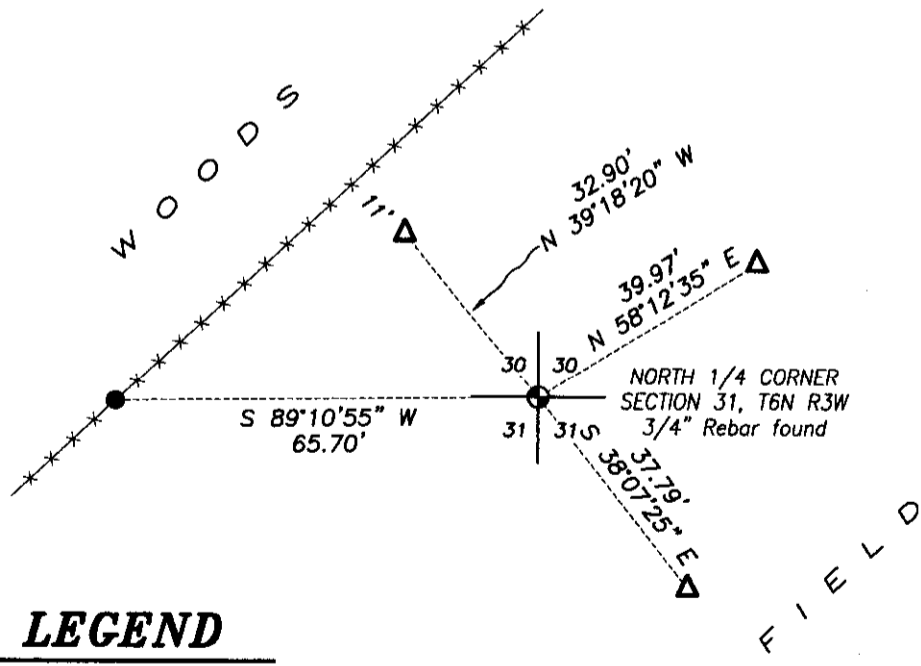
- 1833-Harvey Parke set original corner.
- 1853-John Clark tied to the corner on a Survey filed in Book C, Page 33.
- 1994-Sean Walsh tied to the corner on a Survey filed in Book T, Page 113.
- 1994-Sean Walsh prepared a Government Corner Record for this corner.
- 2003-Larry Austin tied to the corner on a Survey filed in Book 14, Page 45.
- 2004-Larry Austin tied to the corner on a Survey filed in Book 15, Page 58.
- 2005-Larry Austin tied to the corner on a Survey filed in Book 17, Page 7.
- 2005-Larry Austin tied to the corner on a Survey filed in Book 18, Page 11.

DESCRIPTION OF CORNER EVIDENCE FOUND:

I found a 3/4" rebar in place at the corner location. I was unable to recover one witness corner and set a new one as shown hereon. I verified this corner location with E.D.M. and G.P.S. methods.

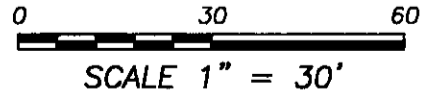
DESCRIPTION OF CORNER AND WITNESS MONUMENTS, references and accessories used to perpetuate the original or re-established location of this corner. Witnesses to corner location Shane Austin and Brandon Austin.

SKETCH:



**LEGEND**

- Section Corner—as designated
- 1/2"x12" rebar set with red "tie" cap
- △ 1" diameter iron pipe found
- x-x- Existing fence



**Austin Engineering LLC**  
 austinengineeringllc.com  
 4211 HWY 81 E, LANCASTER, WI 53813  
 PHONE: 608-723-6363 FAX: 608-723-6702

JOB NO: 15s079  
 H:\CRD\15s079  
 H:\TIE\T6NR3W\112

FIELDBOOK: TDSR  
 DRAWN BY: AJ AUSTIN  
 CREW: SW AUSTIN, BL AUSTIN

# U. S. PUBLIC LAND SURVEY MONUMENT RECORD

**INSTRUCTIONS:** This record shall show the location of the corner and shall include all of the following nine elements (a through i).

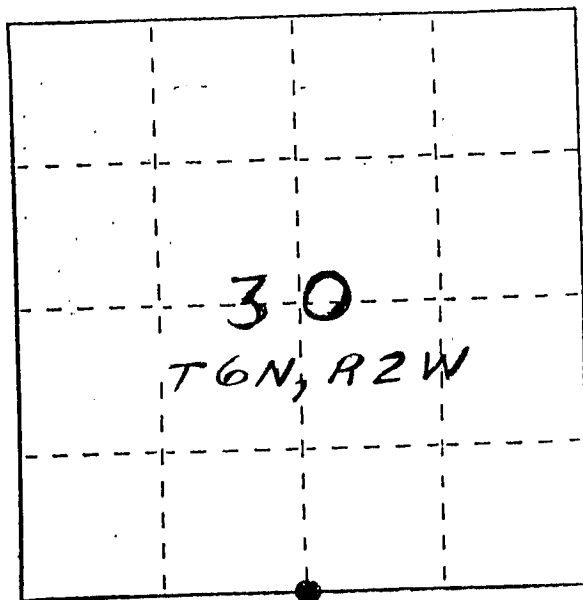
(a) Identify the corner by reference to the U.S. public land survey system.

● = Corner monument restored.

S 1/4, Sec 30, T6N, R2W  
FENNIMORE TWP, GRANT CO,  
WISC.

RECORDED

JUN 7 1988



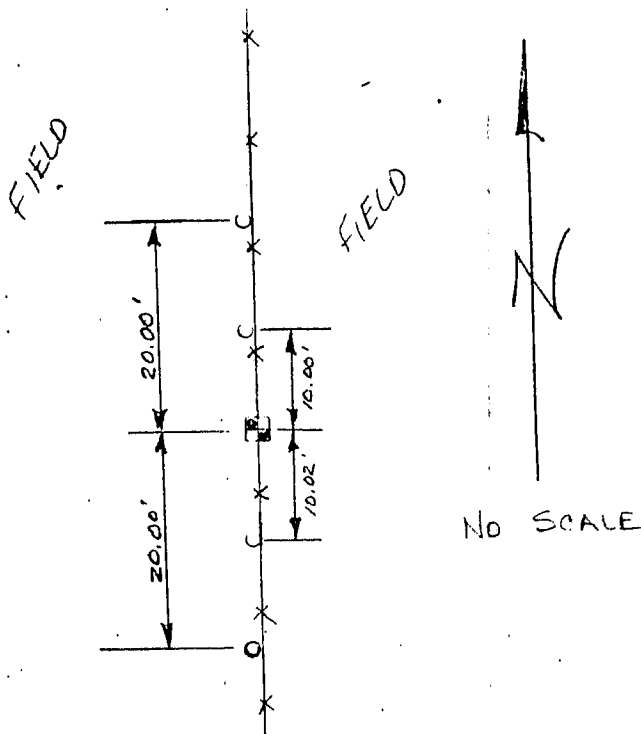
(b) Describe any record evidence, monument evidence, occupational evidence, testimonial evidence or any other material evidence you considered, and whether the monument was found or placed.

NO RECORD OF MONUMENT REPLACEMENT SINCE ORIG SURVEYS;  
SET FROM EXISTING OCCUPATIONAL EVIDENCE & VERIFIED BY EDM  
TRAVERSE.

(c) In the plan view drawing below, provide reference ties to at least 4 witness monuments, or, if the location is within a municipality, to at least 2 witness monuments. (Witness monuments shall be made of concrete, natural stone, iron or other equally durable material.) Describe witness monuments.

(d) Show a plan view drawing depicting the relevant monuments and reference ties which is sufficient in detail to enable accurate relocation of the corner monument if the corner monument is disturbed. Indicate north.

- GRANT CO. ALUM. MON. SET
- 1/2" x 24" REBAR SET
- EXISTING FENCE



FILED

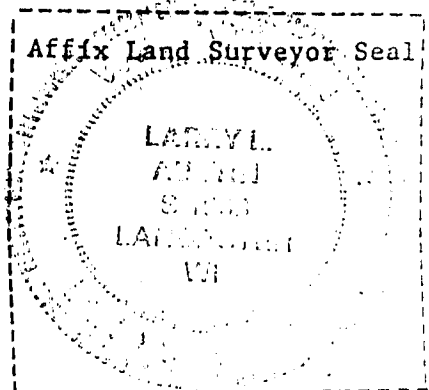
(e) Describe any material discrepancy between the location of the corner as restored or reestablished and the location of that corner as previously restored or reestablished by distance and direction. Show the discrepancy on the plan view drawing under (d), above. Show the distances between the corner as previously restored or reestablished and (1) the corner as restored or reestablished, and (2) to at least 2 of the witness monuments shown on the drawing in (d), above.

NONE

(f) Was the corner restored through acceptance of (1) an obliterated evidence location, or, (2) a found perpetuated location?

OBLITERATED EVIDENCE LOCATION

(g&h) Was the corner reestablished through lost corner proportionate methods? If so, show the method, including the directions and distances to other public land survey corners used as evidence or used for proportioning in determining the corner location?



(i) I, LARRY L. AUSTIN  
(type or print name) certify that the corner location shown on this record was determined by me or under my direction and control and that this U.S. Public Land Survey Monument Record is correct and complete to the best of my knowledge and belief.

Larry L. Austin  
Signature

5-12-88  
Date