

GRANT COUNTY CERTIFIED LAND CORNER

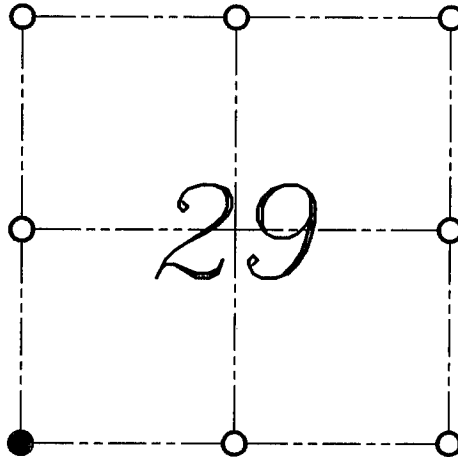
CERTIFICATE:

I, LARRY L. AUSTIN, DO HEREBY CERTIFY THAT ON 19th DAY OF OCTOBER, 1999, I FOUND EVIDENCE OF THE SOUTHWEST CORNER OF SECTION 29, TOWN 6 NORTH, RANGE 2 WEST, OF THE FOURTH PRINCIPAL MERIDIAN, AND I RE-ESTABLISHED SAID CORNER ACCORDING TO THE WISCONSIN STATUTES AS SHOWN AND DESCRIBED HEREON.

DATED THIS 1st DAY OF NOVEMBER, 1999

Larry L. Austin
LARRY L. AUSTIN S-1903

CORNER NUMBER 111



SEAL

● = CORNER LOCATION
SOUTHWEST CORNER OF
SECTION 29, T 6 N R 2 W
TOWN OF FENNIMORE

HISTORY OF ORIGINAL CORNER ESTABLISHMENT:

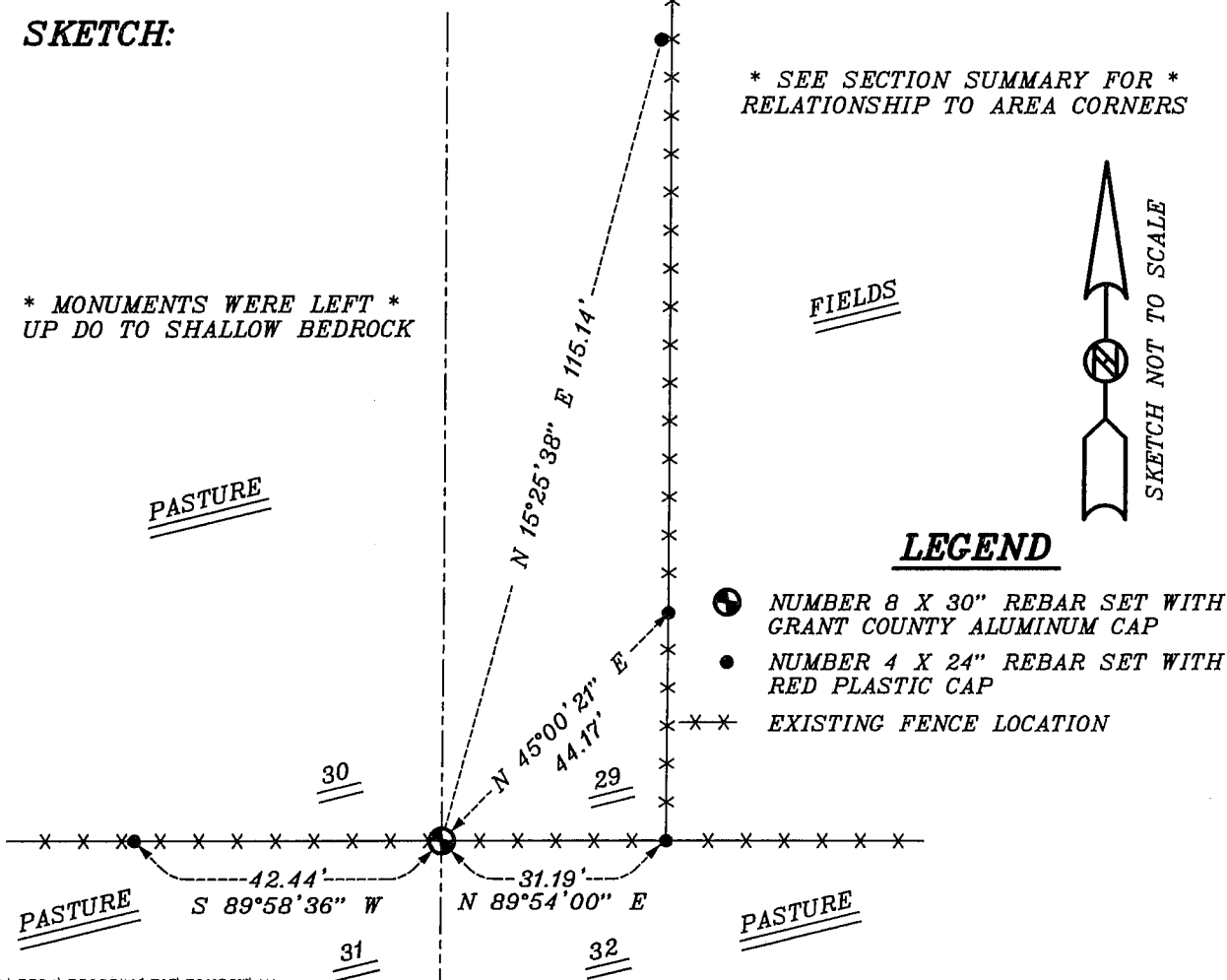
CORNER WAS SET IN 1832 BY HARVEY PARKE.
IN 1850 GEO STUNTZ FOUND THE ORIGINAL POST.

DESCRIPTION OF CORNER EVIDENCE FOUND:

I FOUND AN EXISTING EAST-WEST FENCE WHICH I ACCEPTED FOR NORTHING.
EASTING WAS ESTABLISHED USING PROPORTIONING METHODS.
VERIFIED THIS LOCATION USING E.D.M. AND G.P.S. METHODS.

DESCRIPTION OF CORNER AND WITNESS MONUMENTS, REFERENCES AND ACCESSORIES
USED TO PERPETUATE THE ORIGINAL OR RE-ESTABLISHED LOCATION OF THIS CORNER:
WITNESS TO THE CORNER LOCATION: BOBBY SEDGWICK ; SHELBY BLINDERT

SKETCH:



* MONUMENTS WERE LEFT *
UP DO TO SHALLOW BEDROCK

* SEE SECTION SUMMARY FOR *
RELATIONSHIP TO AREA CORNERS

LEGEND

- NUMBER 8 X 30" REBAR SET WITH GRANT COUNTY ALUMINUM CAP
- NUMBER 4 X 24" REBAR SET WITH RED PLASTIC CAP
- XX EXISTING FENCE LOCATION