

GRANT COUNTY CERTIFIED LAND CORNER

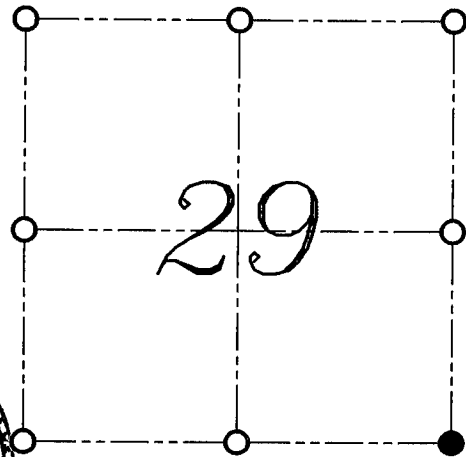
CERTIFICATE:

I, LARRY L. AUSTIN, DO HEREBY CERTIFY THAT ON 19th DAY OF OCTOBER, 1999, I FOUND EVIDENCE OF THE SOUTHEAST CORNER OF SECTION 29, TOWN 6 NORTH, RANGE 2 WEST, OF THE FOURTH PRINCIPAL MERIDIAN, AND I RE-ESTABLISHED SAID CORNER ACCORDING TO THE WISCONSIN STATUTES AS SHOWN AND DESCRIBED HEREON.

DATED THIS 1st DAY OF OCTOBER, 1999

Larry L. Austin
LARRY L. AUSTIN S-1903

CORNER NUMBER 109



● = CORNER LOCATION
SOUTHEAST CORNER OF SECTION 29, T 6 N R 2 W TOWN OF FENNIMORE

HISTORY OF ORIGINAL CORNER ESTABLISHMENT:

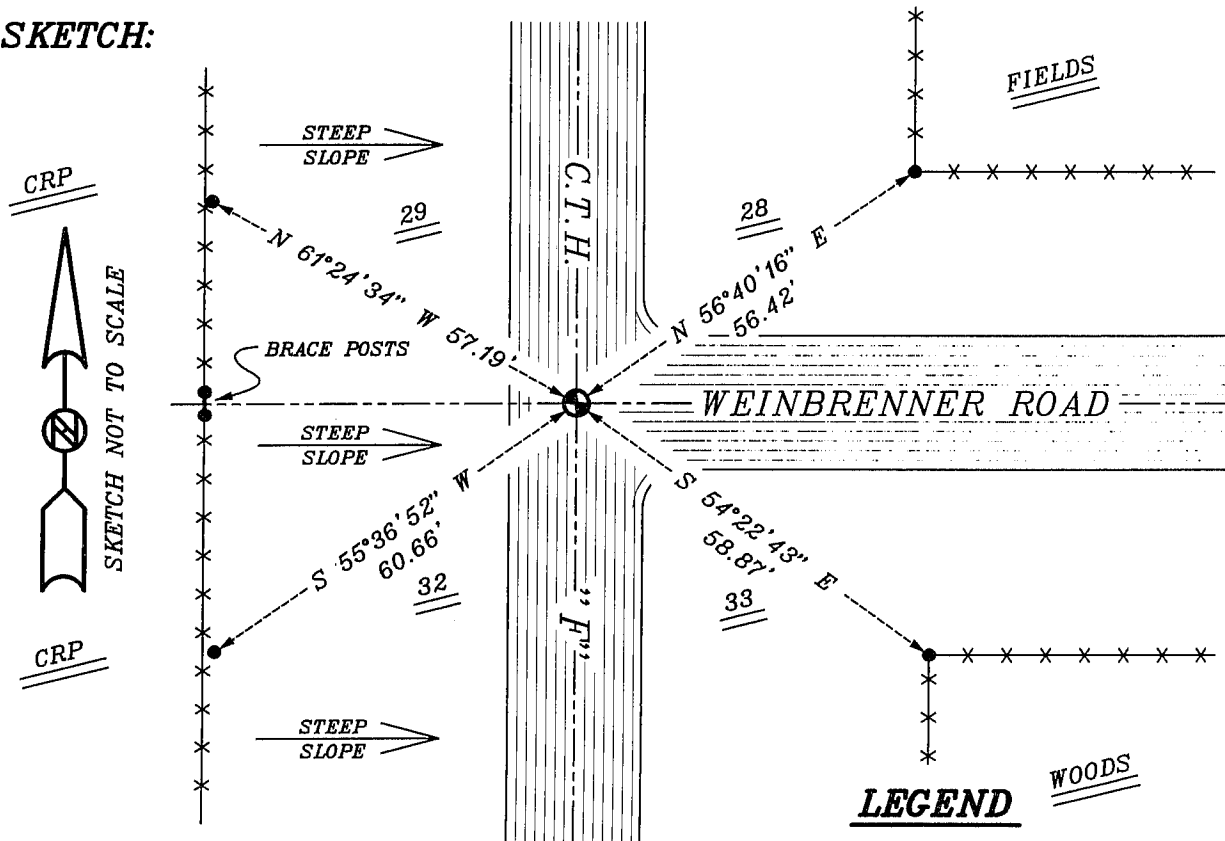
CORNER WAS SET IN 1832 BY HARVEY PARKE. IN 1850 GEO STUNTZ FOUND THE ORIGINAL POST.

DESCRIPTION OF CORNER EVIDENCE FOUND:

THE ORIGINAL POST WAS LOST DO TO THE HUGE CUT FOR HIGHWAY CONSTRUCTION. I FOUND A 1" IRON BAR AND ACCEPTED IT'S LOCATION AFTER AN E.D.M. AND G.P.S. TRAVERSE OF THE AREA.

DESCRIPTION OF CORNER AND WITNESS MONUMENTS, REFERENCES AND ACCESSORIES USED TO PERPETUATE THE ORIGINAL OR RE-ESTABLISHED LOCATION OF THIS CORNER:
WITNESS TO THE CORNER LOCATION: BOBBY SEDGWICK ; SHELBY BLINDERT

SKETCH:



* SEE SECTION SUMMARY FOR *
RELATIONSHIP TO AREA CORNERS

- LEGEND**
- 1" IRON BAR FOUND 4" BELOW SURFACE
 - NUMBER 4 X 24" REBAR SET WITH RED PLASTIC CAP
 - x—x— EXISTING FENCE LOCATION