

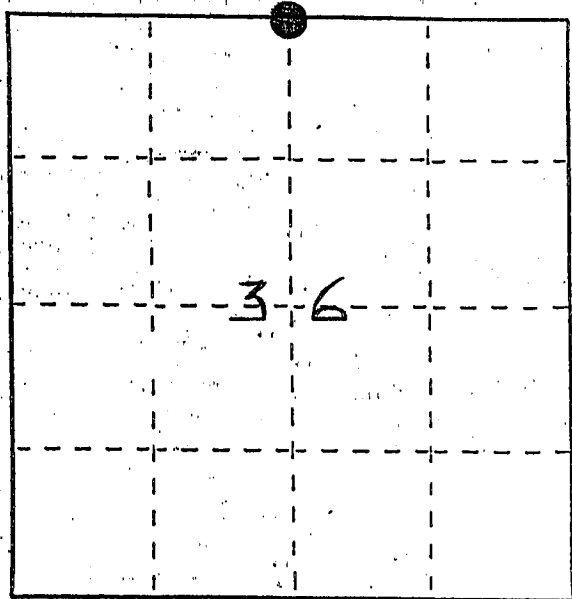
# U. S. PUBLIC LAND SURVEY MONUMENT RECORD

INSTRUCTIONS: This record shall show the location of the corner and shall include all of the following nine elements (a through i).

(a) Identify the corner by reference to the U.S. public land survey system.

○ = Corner monument restored.

NORTH 1/4 CORNER  
SECTION 36  
TOWN 6 NORTH  
RANGE 2 WEST  
FENNIMORE TOWNSHIP  
GRANT COUNTY, WI.

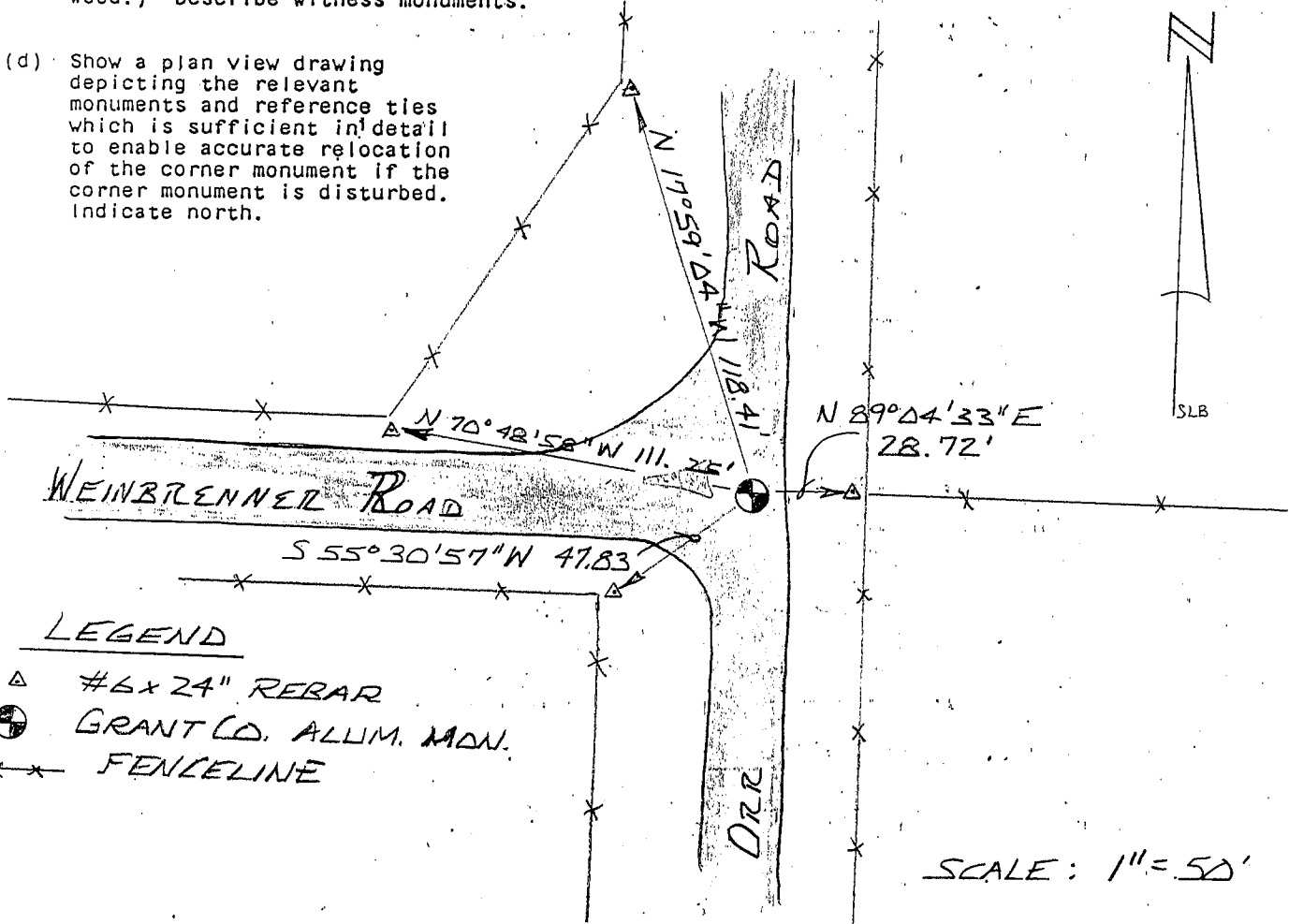


(b) Describe any record evidence, monument evidence, occupational evidence, testimonial evidence or any other material evidence you considered, and whether the monument was found or placed.

MONUMENT WAS FOUND

(c) In the plan view drawing below, provide reference ties to at least 4 witness monuments, or, if the location is within a municipality, to at least 2 witness monuments. (Witness monuments shall be made of concrete, natural stone, iron or other equally durable material, ~~except~~ wood.) Describe witness monuments.

(d) Show a plan view drawing depicting the relevant monuments and reference ties which is sufficient in detail to enable accurate relocation of the corner monument if the corner monument is disturbed. Indicate north.



LEGEND

- △ #6 x 24" REBAR
- ⊙ GRANT CO. ALLUM. MON.
- xx FENCELINE

SCALE: 1" = 50'

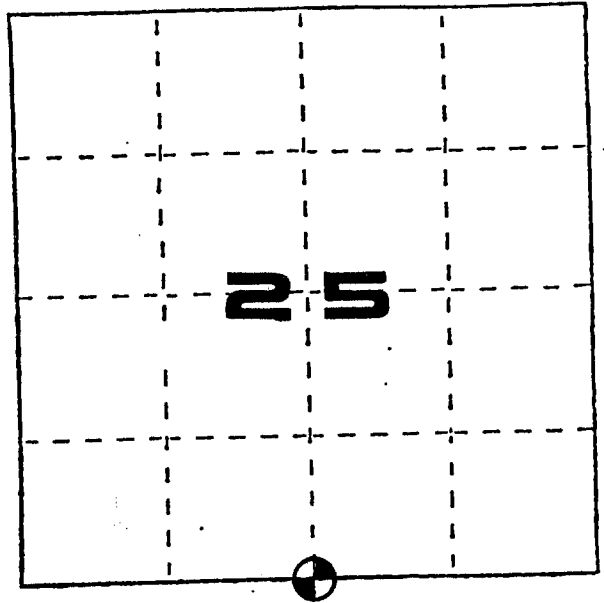


# U. S. PUBLIC LAND SURVEY MONUMENT RECORD

**INSTRUCTIONS:** This record shall show the location of the corner and shall include all of the following nine elements (a through i).

- (a) Identify the corner by reference to the U.S. public land survey system.  
 ● = Corner monument restored.

South 1/4 corner, Section 25,  
 Township 6 North, Range 2 West,  
 Town of Fennimore, Grant County,  
 Wisconsin.



- (b) Describe any record evidence, monument evidence, occupational evidence, testimonial evidence or any other material evidence you considered, and whether the monument was found or placed.

I set an aluminum monument on the centerline of Orr Road at a fence line to the East. This location is at an equidistance between the centerline of Weinbrenner at a fence to the North at the Southeast corner of Section 25 and the end of a fence to the West at Southeast corner of Section 25. This location also checks with the original records for distances to the north and south. I accepted this location as being the corner and set four tie irons.

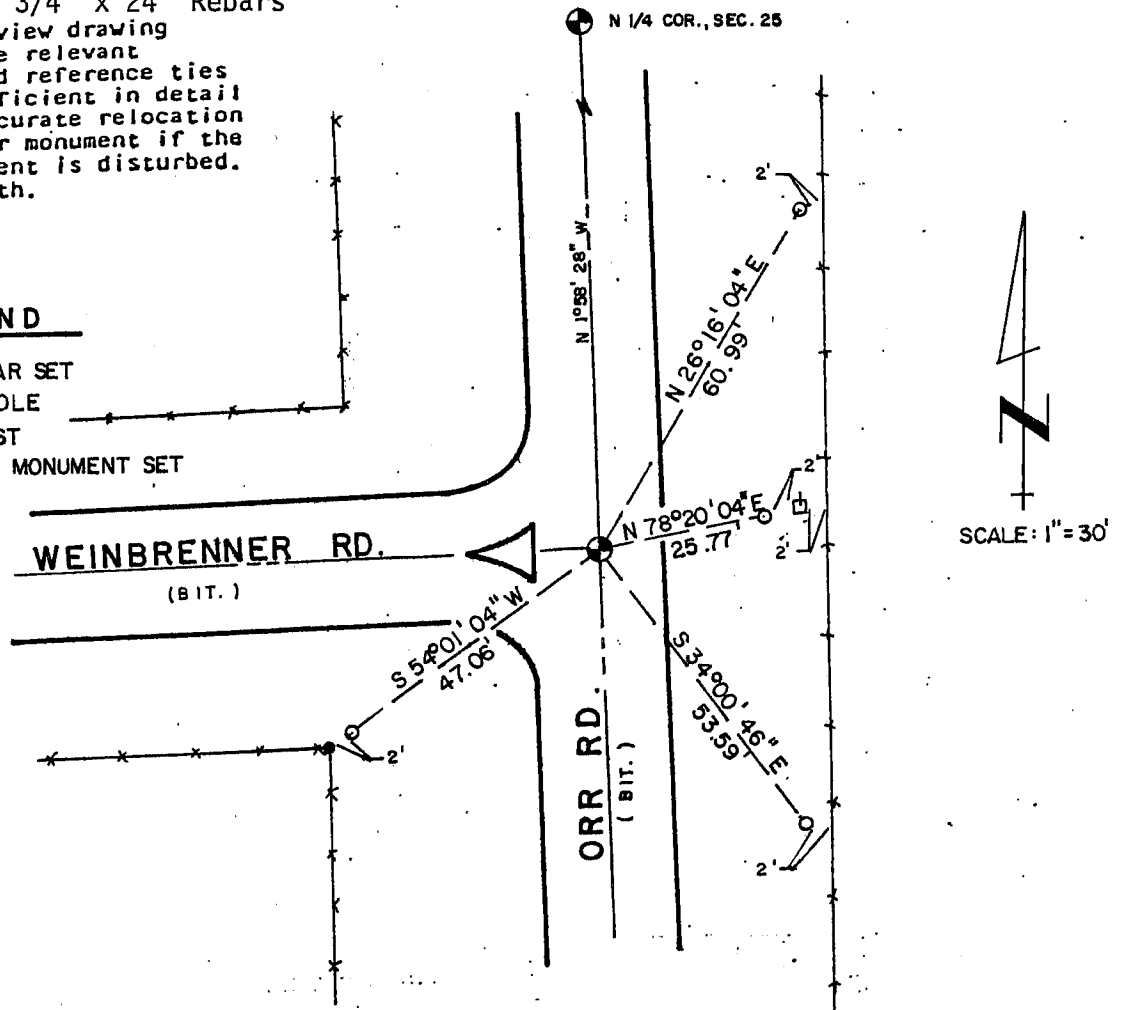
- (c) In the plan view drawing below, provide reference ties to at least 4 witness monuments, or, if the location is within a municipality, to at least 2 witness monuments. (Witness monuments shall be made of concrete, natural stone, iron or other equally durable material.)  
 Describe witness monuments.

Four 3/4" x 24" Rebars

- (d) Show a plan view drawing depicting the relevant monuments and reference ties which is sufficient in detail to enable accurate relocation of the corner monument if the corner monument is disturbed. Indicate north.

**LEGEND**

- 3/4" REBAR SET
- POWER POLE
- WOOD POST
- ⊙ ALUMINUM MONUMENT SET



Describe any material discrepancy between the location of the corner as restored or reestablished and the location of that corner as previously restored or reestablished by distance and direction. Show the discrepancy on the plan view drawing under (d), above. Show the distances between the corner as previously restored or reestablished and (1) the corner as restored or reestablished, and (2) to at least 2 of the witness monuments shown on the drawing in (d), above.

No known discrepancy

(f) Was the corner restored through acceptance of (1) an obliterated evidence location, or, (2) a found, perpetuated location?

Obliterated evidence location.

(g&h) Was the corner reestablished through lost corner proportionate methods? If so, show the method, including the directions and distances to other public land survey corners used as evidence or used for proportioning in determining the corner location?

No

(i) I, Roger D. Schneeberger  
(type or print name) certify that the corner location shown on this record was determined by me or under my direction and control and that this U.S. Public Land Survey Monument Record is correct and complete to the best of my knowledge and belief.

Roger D. Schneeberger  
Signature

10-13-88  
Date

