

GRANT COUNTY CERTIFIED LAND CORNER

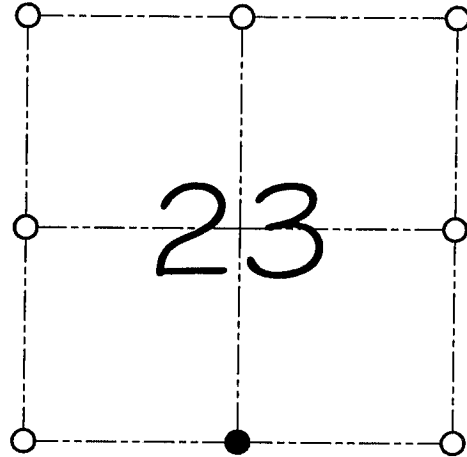
CORNER NUMBER 84

CERTIFICATE:

I, Larry L. Austin, do hereby certify that on the 17th day of March, 2000, I found evidence of the South 1/4 corner of Section 23, Town 6 North, Range 2 West, of the 4th Principal Meridian, and I re-established said corner according to the Wisconsin statutes as shown and described hereon.

Dated this 25th day of March, 2000

Larry L. Austin
Larry L. Austin S-1903



● = CORNER LOCATION
SOUTH 1/4 CORNER OF SECTION 23, T 6 N R 2 W TOWN OF FENNIMORE

HISTORY OF ORIGINAL CORNER ESTABLISHMENT:

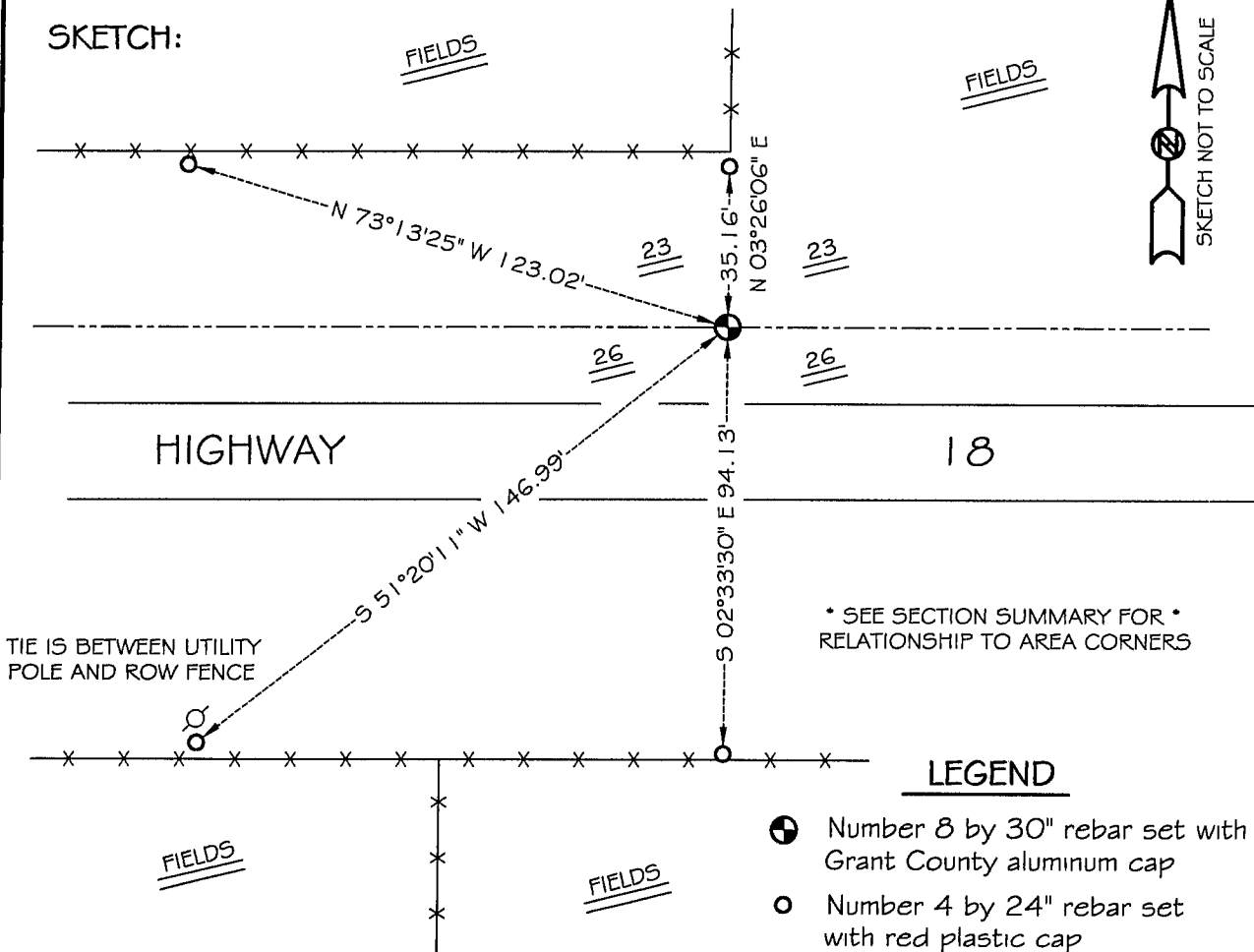
Corner was originally set in 1832 by Harvey Parke.
No other record of the corner was found.

DESCRIPTION OF CORNER EVIDENCE FOUND:

I found an existing North/South fence for Easting.
Northing was established by a straight line between the Southwest and the Southeast corners. Verified this location using E.D.M. & G.P.S. methods.

DESCRIPTION OF CORNER AND WITNESS MONUMENTS, references and accessories used to perpetuate the original or re-established location of this corner
WITNESS TO THE CORNER LOCATION: SHANE AUSTIN & CODY AUSTIN

SKETCH:



* SEE SECTION SUMMARY FOR *
RELATIONSHIP TO AREA CORNERS

LEGEND

- Number 8 by 30" rebar set with Grant County aluminum cap
- Number 4 by 24" rebar set with red plastic cap
- x-x- Existing fence location