

GRANT COUNTY

CERTIFIED U.S. PUBLIC LAND SURVEY MONUMENT RECORD

DATUM: NAD 83 (2007)	GRANT COUNTY COORDINATES	
CONTROL: COMBINATION OF GPS AND CONVENTIONAL FIELD CONTROL	NORTH	572,223.67'
	EAST	838,957.73'

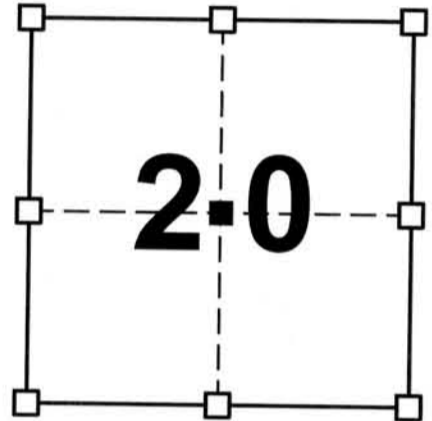
THE CENTER OF SECTION 20, TOWN 6 NORTH,
RANGE 2 WEST, TOWN OF FENNIMORE, GRANT
COUNTY, WISCONSIN.

(A) IDENTIFY THE CORNER BY REFERENCE
TO THE U.S. PUBLIC LAND SURVEY SYSTEM

■ = CORNER MONUMENT RESTORED

WITNESS TO CORNER LOCATION:

TODD T. RUMMLER

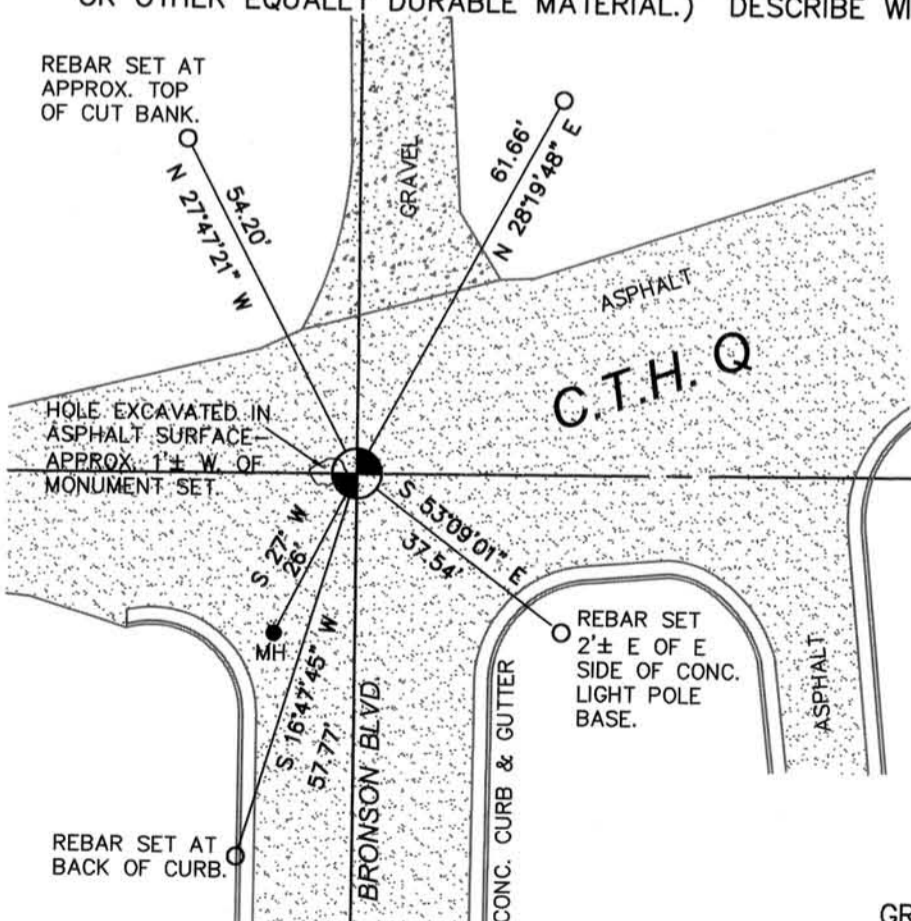


SECTION 20
TOWN 6 NORTH
RANGE 2 WEST

(B) DESCRIBE ANY RECORD EVIDENCE, MONUMENT EVIDENCE, OCCUPATIONAL EVIDENCE,
TESTIMONIAL EVIDENCE OR ANY OTHER MATERIAL EVIDENCE YOU CONSIDERED, AND
WHETHER THE MONUMENT WAS FOUND OR PLACED.

I FOUND A BADLY BENT AND TWISTED 3/4" DIAMETER REBAR BURIED UNDER THE ASPHALT OF C.T.H. Q. I EXCAVATED DOWN ABOUT A 14" AND TRIED TO EXTRACT THE REBAR, BUT COULD NOT REMOVE IT. EXCAVATING DEEPER WOULD HAVE REQUIRED OPENING UP A VERY LARGE HOLE IN THE NEWER ASPHALT OF C.T.H. Q, SO I LEFT THE REBAR IN PLACE. THE REBAR IS BENT VERY BADLY TO THE WEST AND ALSO APPEARS TO HAVE BEEN DISPLACED TO THE WEST, PROBABLY DUE TO THE RECONSTRUCTION OF C.T.H. Q SEVERAL YEARS AGO. I DROVE A 3/4" DIAMETER REBAR WITH GRANT COUNTY ALUMINUM CAP AT THE INTERSECTION OF THE QUARTER LINES, WHICH IS THE SAME METHOD BRUCE O. FRUDDEN, RLS, USED TO ESTABLISH THE LOCATION AS SHOWN ON HIS TIE SHEET DATED NOVEMBER 29, 1989. FRUDDEN'S TIES HAVE ALSO BEEN DESTROYED, SO I ESTABLISHED NEW ONES AS SHOWN BELOW.

(C) IN THE PLAN VIEW DRAWING BELOW, PROVIDE REFERENCE TIES TO AT LEAST 4 WITNESS
MONUMENTS OR, IF THE LOCATION IS WITHIN A MUNICIPALITY, TO AT LEAST 2 WITNESS
MONUMENTS. (WITNESS MONUMENTS SHALL BE MADE ON CONCRETE, NATURAL STONE, IRON,
OR OTHER EQUALLY DURABLE MATERIAL.) DESCRIBE WITNESS MONUMENTS.



LEGEND

- C1/4 COR. SECTION 20
3/4" Ø X 24" LONG REBAR W/
GRANT CO. ALUMINUM CAP-SET
- SET 3/4" Ø X 24" LONG REBAR
WEIGHING 1.502 LB./FT.



NOT TO SCALE

GRANT COUNTY CORNER NO. 75A

40602202020

- (D) DESCRIBE ANY MATERIAL DISCREPANCY BETWEEN THE LOCATION OF THE CORNER AS RESTORED OR REESTABLISHED AND THE LOCATION OF THAT CORNER AS PREVIOUSLY RESTORED OR REESTABLISHED BY DISTANCE AND DIRECTION. SHOW THE DISCREPANCY ON THE PLAN VIEW DRAWING UNDER (C), ABOVE. SHOW THE DISTANCES BETWEEN THE CORNER AS PREVIOUSLY RESTORED OR REESTABLISHED AND (1) THE CORNER AS RESTORED OR REESTABLISHED, AND (2) TO AT LEAST 2 OF THE WITNESS MONUMENTS AS SHOWN ON THE DRAWING IN (C), ABOVE.

NONE.

- (E) WAS THE CORNER RESTORED THROUGH ACCEPTANCE OF (1) AN OBLITERATED EVIDENCE LOCATION, OR (2) A FOUND PERPETUATED LOCATION?

2.) A FOUND PERPETUATED LOCATION

- (F & G) WAS THE CORNER REESTABLISHED THROUGH LOST CORNER PROPORTIONATE METHODS? IF SO SHOW THE METHOD, INCLUDING THE DIRECTION AND DISTANCED TO OTHER PUBLIC LAND SURVEY CORNERS USED AS EVIDENCE OR USED FOR PROPORTIONING IN DETERMINING THE CORNER LOCATION.

NO.

AFFIX LAND SURVEYOR SEAL

- (H) I, TODD T. RUMMLER, RLS-2443 CERTIFY THAT THE CORNER LOCATION SHOWN ON THIS RECORD WAS DETERMINED BY ME OR UNDER MY DIRECTION AND CONTROL AND THAT THIS U.S. PUBLIC LAND SURVEY MONUMENT RECORD IS CORRECT AND COMPLETE TO THE BEST OF MY KNOWLEDGE AND BELIEF.



SIGNATURE

2-16-2012

DATE



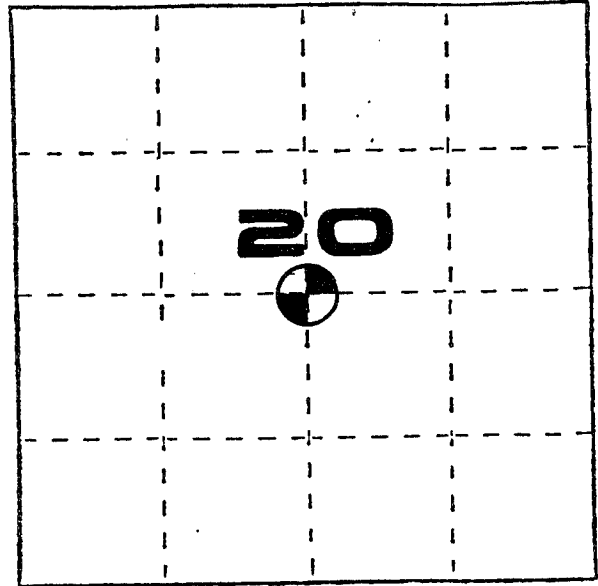
U. S. PUBLIC LAND SURVEY MONUMENT RECORD

INSTRUCTIONS: This record shall show the location of the corner and shall include all of the following nine elements (a through i).

- (a) Identify the corner by reference to the U.S. public land survey system.
- ⊕ = Corner monument restored.

Center of Section 20, T6N, R2W, Town of Fennimore, Grant County, Wisconsin.

Date of survey: September 27, 1989.

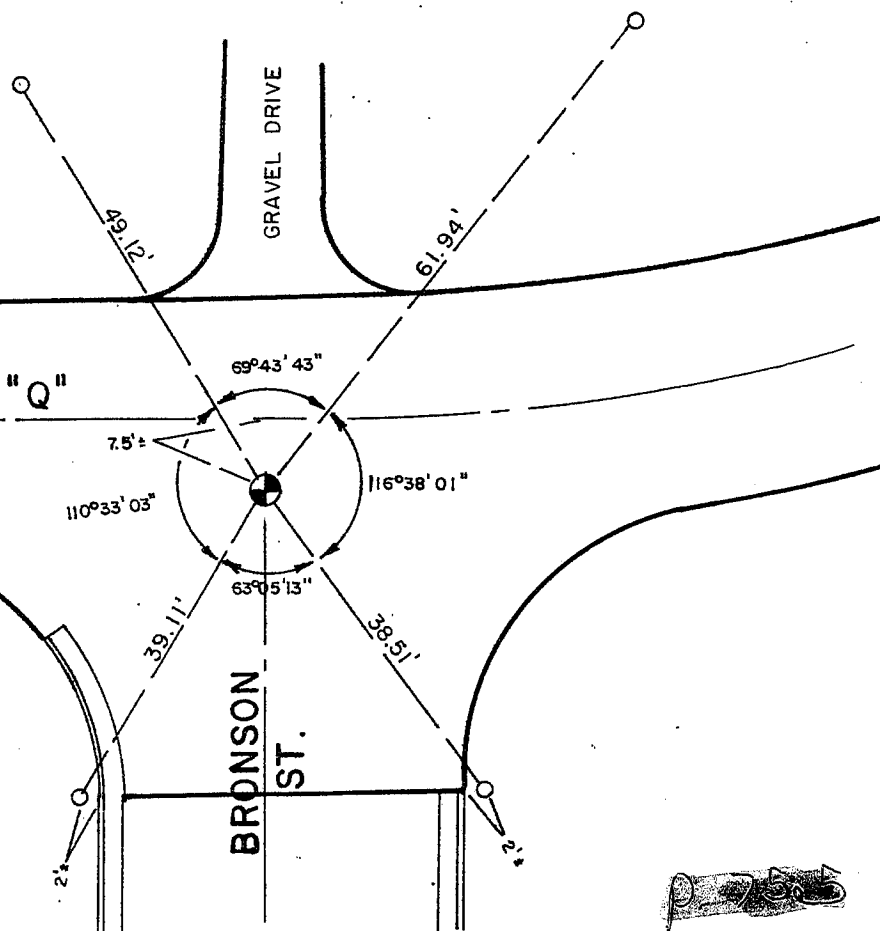


- (b) Describe any record evidence, monument evidence, occupational evidence, testimonial evidence or any other material evidence you considered, and whether the monument was found or placed.

I set the aluminum monument at the center of Section 20, T6N, R2W, using a straight line intersection of the E-W 1/4 line and N-S 1/4 line. This location agrees with several surveys along Bronson Street.

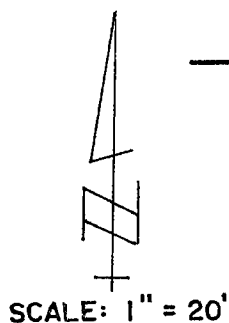
- (c) In the plan view drawing below, provide reference ties to at least 4 witness monuments, or, if the location is within a municipality, to at least 2 witness monuments. (Witness monuments shall be made of concrete, natural stone, iron or other equally durable material.) Describe witness monuments.

- (d) Show a plan view drawing depicting the relevant monuments and reference ties which is sufficient in detail to enable accurate relocation of the corner monument if the corner monument is disturbed. Indicate north.



LEGEND

- ⊕ CAST ALUMINUM MONUMENT SET
- 3/4" x 24" REBAR SET



Describe any material discrepancy between the location of the corner as restored or reestablished and the location of that corner as previously restored or reestablished by distance and direction. Show the discrepancy on the plan view drawing under (d), above. Show the distances between the corner as previously restored or reestablished and (1) the corner as restored or reestablished, and (2) to at least 2 of the witness monuments shown on the drawing in (d), above.

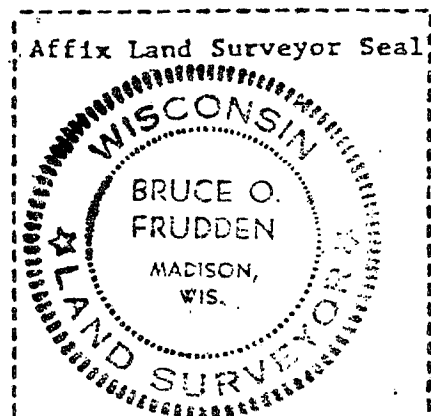
No known discrepancy.

(f) Was the corner restored through acceptance of (1) an obliterated evidence location, or, (2) a found, perpetuated location?

Not a corner monumented in the original government survey.

(g&h) Was the corner reestablished through lost corner proportionate methods? If so, show the method, including the directions and distances to other public land survey corners used as evidence or used for proportioning in determining the corner location?

Not a lost corner.



(i) I, Bruce O. Frudden
(type or print name) certify that the corner location shown on this record was determined by me or under my direction and control and that this U.S. Public Land Survey Monument Record is correct and complete to the best of my knowledge and belief.

Bruce O. Frudden
Signature

11-29-89
Date