

RECORD OF CONTROL SURVEY STATION

QUARTER SECTION CORNER  $\frac{20}{29}$  |  $\frac{20}{29}$  TOWNSHIP 6 N, RANGE 2 W, GRANT COUNTY, WISCONSIN

GEODETIC SURVEY BY ALSTER & ASSOCIATES INC. ENGINEERS, MADISON, WISCONSIN.

STATE PLANE COORDINATES OF: QUARTER-SECTION CORNER  
NORTH 355,591.89  
EAST 1,829,892.60

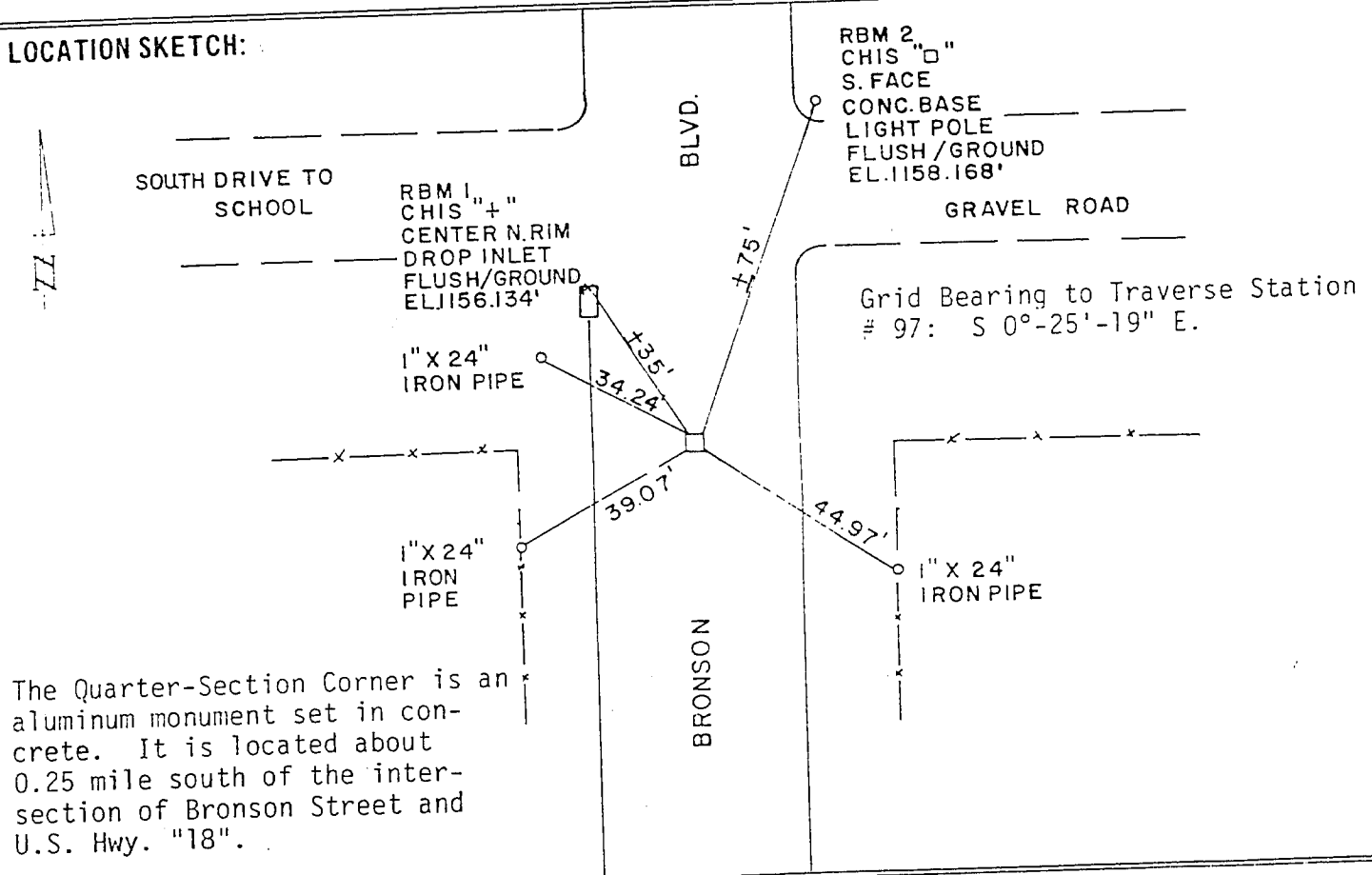
ELEVATION OF STATION: 1155.52' THETA ANGLE: -0°-26'-12"

HORIZONTAL DATUM: WISCONSIN STATE PLANE COORDINATE SYSTEM, SOUTH ZONE

VERTICAL DATUM: MEAN SEA LEVEL, 1929 ADJUSTMENT

HORIZONTAL & VERTICAL CONTROL ACCURACY: SECOND ORDER

LOCATION SKETCH:



The Quarter-Section Corner is an aluminum monument set in concrete. It is located about 0.25 mile south of the intersection of Bronson Street and U.S. Hwy. "18".

SURVEYOR'S AFFIDAVIT:

STATE OF WISCONSIN) SS  
GRANT COUNTY)

I HEREBY CERTIFY THAT I, David K. Krohn, Registered Land Surveyor, hereby certify that I have established the corners from examination of the original government land survey notes, from previous surveys, from existing field evidence, from existing pertinent deeds of record and after a field survey of the sections.



DATE OF SURVEY 19 JUNE 1977

*David K. Krohn*  
REGISTERED LAND SURVEYOR

S- 1309