

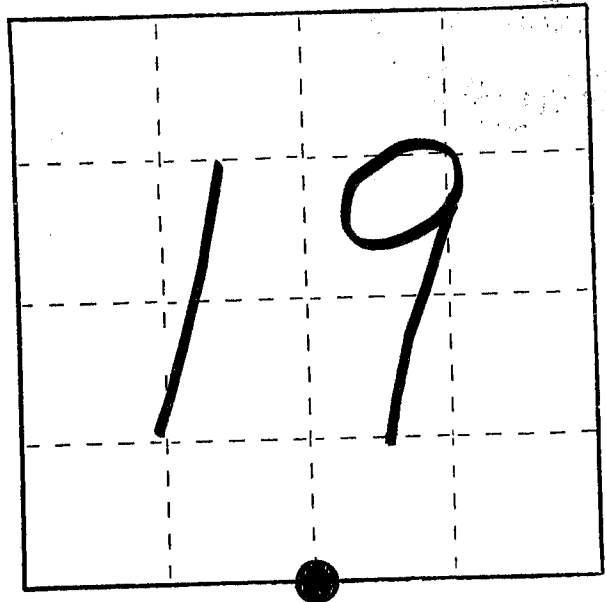
# U. S. PUBLIC LAND SURVEY MONUMENT RECORD

**INSTRUCTIONS :**

This record shall show the location of the corner and shall include all of the following nine elements (a through i).

- (a) Identify the corner by reference to the U.S. public land survey system.

● = Corner monument restored.



- (b) Describe any record evidence, monument evidence, occupational evidence, testimonial evidence or any other material evidence you considered, and whether the monument was found or placed.

Found Aluminum Monument in Place,  
After Highway Construction I Reset  
Aluminum Monument in Concrete at  
Found Location.

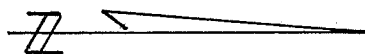
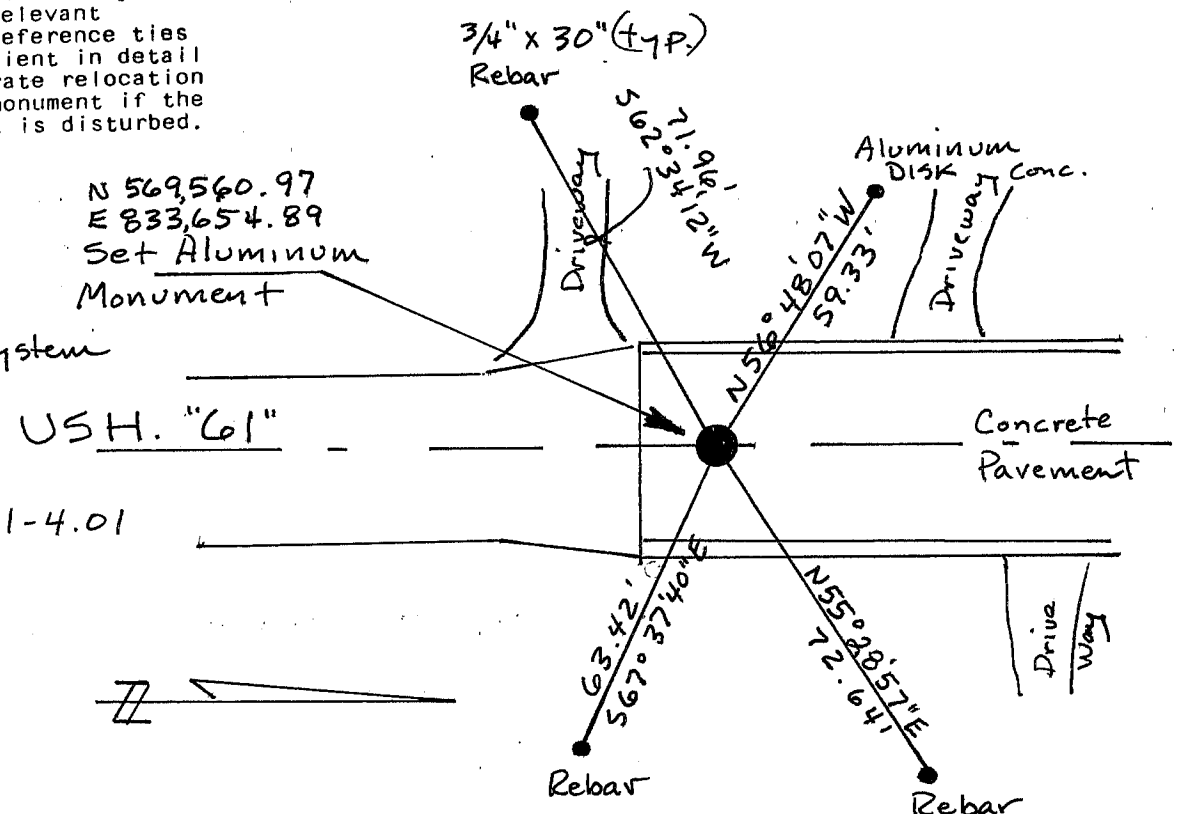
- (c) In the plan view drawing below, provide reference ties to at least 4 witness monuments, or, if the location is within a municipality, to at least 2 witness monuments. (Witness monuments shall be made of concrete, natural stone, iron or other equally durable material.)  
Describe witness monuments.

Set  
● = Witness Monument

- (d) Show a plan view drawing depicting the relevant monuments and reference ties which is sufficient in detail to enable accurate relocation of the corner monument if the corner monument is disturbed. Indicate north.

**Notes:**

- 1) Wis. Co. Coordinate System
  - 2) Transportation Project Plat USH. "61"
- NO: 1650-00-21-4.01



(e) Describe any material discrepancy between the location of the corner as restored or reestablished and the location of that corner as previously restored or reestablished by distance and direction. Show the discrepancy on the plan view drawing under (d), above. Show the distances between the corner as previously restored or reestablished and (1) the corner as restored or reestablished, and (2) to at least 2 of the witness monuments shown on the drawing in (d), above.

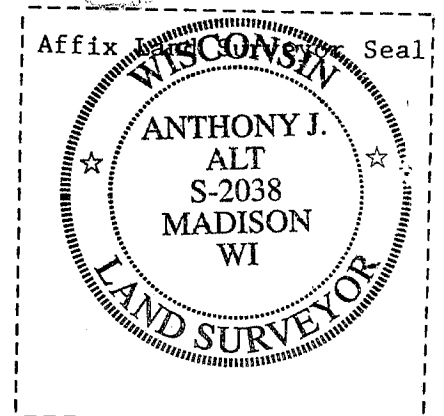
No discrepancy as restored.

(f) Was the corner restored through acceptance of (1) an obliterated evidence location, or, (2) a found perpetuated location?

Restored through acceptance of found monument.

(g&h) Was the corner reestablished through lost corner proportionate methods? If so, show the method, including the directions and distances to other public land survey corners used as evidence or used for proportioning in determining the corner location?

NA.



(i) I, Anthony J. Alt  
(type or print name) certify that the corner location shown on this record was determined by me or under my direction and control and that this U.S. Public Land Survey Monument Record is correct and complete to the best of my knowledge and belief.

Signature Anthony J. Alt Date 6-20-07

CITY OF FENNIMORE

RECORD OF CONTROL SURVEY STATION

QUARTER SECTION CORNER  $\frac{19}{30}$  |  $\frac{19}{30}$  TOWNSHIP 6 N, RANGE 2 W, GRANT COUNTY, WISCONSIN

GEODETIC SURVEY BY ALSTER & ASSOCIATES INC. ENGINEERS, MADISON, WISCONSIN.

STATE PLANE COORDINATES OF: QUARTER-SECTION CORNER  
 NORTH 355,632.85  
 EAST 1,824,582.19

ELEVATION OF STATION: 1167.41' THETA ANGLE: -0°-27'-01"

HORIZONTAL DATUM: WISCONSIN STATE PLANE COORDINATE SYSTEM, SOUTH ZONE

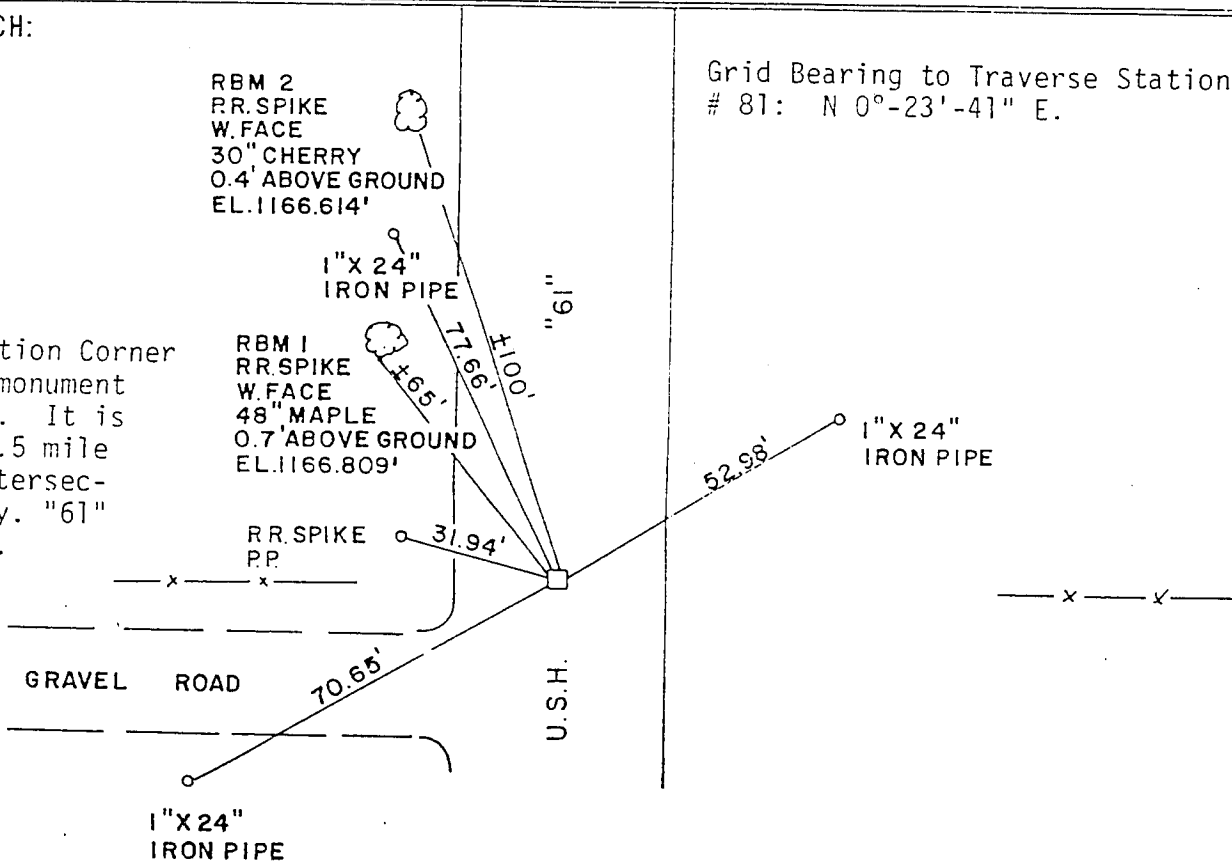
VERTICAL DATUM: MEAN SEA LEVEL, 1929 ADJUSTMENT

HORIZONTAL & VERTICAL CONTROL ACCURACY: SECOND ORDER

LOCATION SKETCH:

Grid Bearing to Traverse Station # 81: N 0°-23'-41" E.

The Quarter-Section Corner is an aluminum monument set in concrete. It is located about 0.5 mile south of the intersection of U.S. Hwy. "61" and 12th Street.



SURVEYOR'S AFFIDAVIT:

STATE OF WISCONSIN) SS  
 GRANT COUNTY)

I HEREBY CERTIFY THAT I, David K. Krohn, Registered Land Surveyor, hereby certify that I have established the corners from examination of the original government land survey notes, from previous surveys, from existing field evidence, from existing pertinent deeds of record and after a field survey of the sections.



DATE OF SURVEY 15 JUNE 1977

*David K. Krohn*

1309

*706 92*