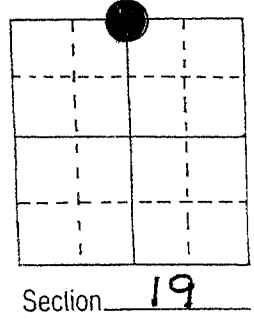


U.S. PUBLIC LAND SURVEY MONUMENT RECORD

Note: This form is intended and designed to fulfill all requirements of Wisconsin Administrative Code, Chapter A-E 5.02, U.S. Public Land Survey Monument Record (3) (a) (b) (c) (d) (e) (f) (g) (h) (i). An additional sheet may be added if necessary to conform with said requirements.

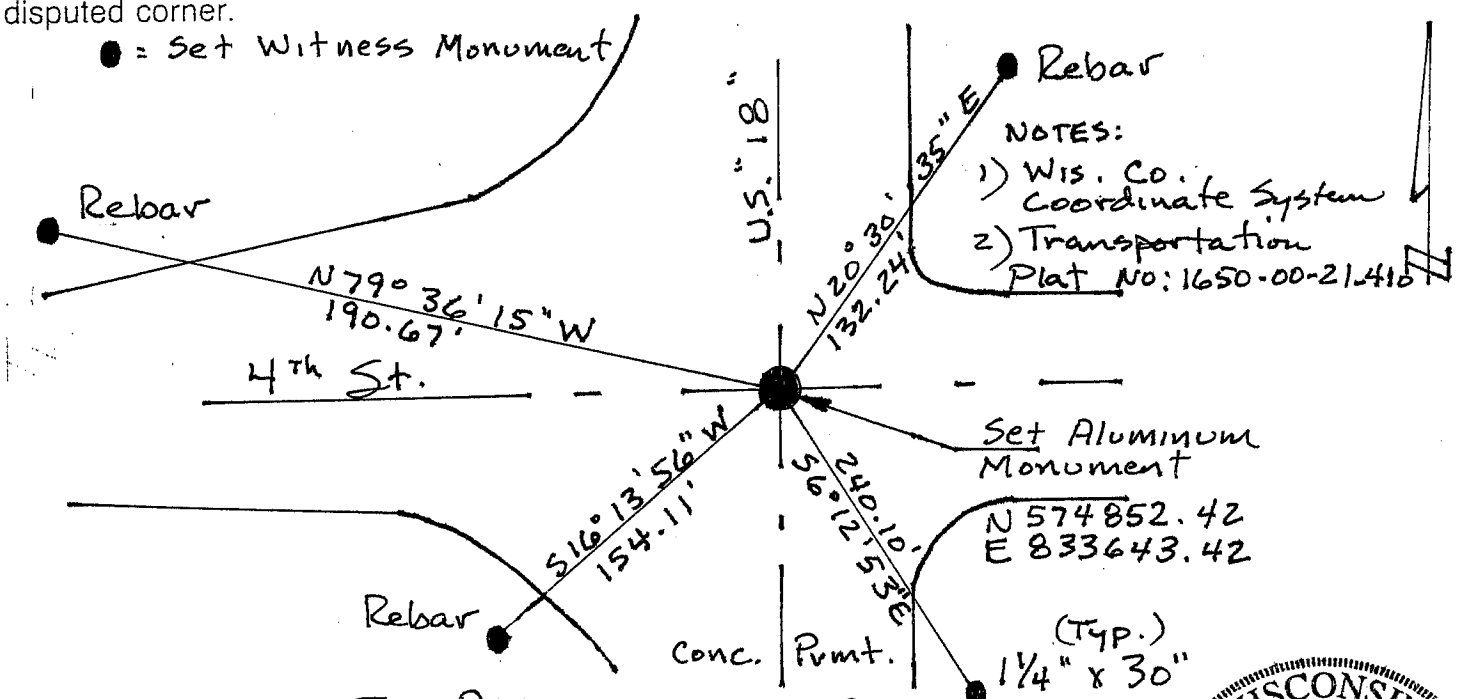
(a) Corner location: Township 6 North
 Range 2 East/West
 Town/City/Village Fennimore
 County Grant



(b) (f) (g) (h) Description of monument found at this corner and if it was accepted, state all evidence (material, testimonial, occupational, plats, records, other monuments) used as a basis for accepting. If not accepted or if nothing was found, state evidence used as basis for establishing location. If reestablished through lost corner proportionate methods, indicate all monuments, distances and directions used to establish.

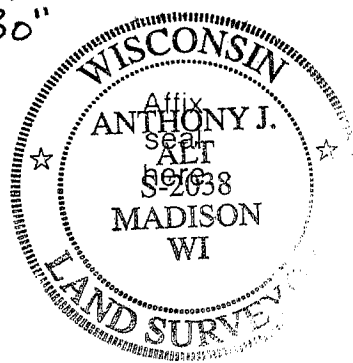
Found Aluminum Monument in Place, After Highway Construction, I Reset Aluminum Monument in Concrete at Found Location.

(c) (d) (e) Plan view of corner with ties to at least 4 witness monuments. If in disagreement with previously established corner, show the distances between the two corners and also indicate the ties to the disputed corner.



(i) I, Anthony J. Alt, RLS # 2038
 (type or print name) certify that the corner location on this record was determined by me or under my direction and control and that this U.S. Public Land Survey Monument Record is correct and complete to the best of my knowledge and belief.

Signature Anthony J. Alt Date 11-6-07



U. S. PUBLIC LAND SURVEY MONUMENT RECORD

INSTRUCTIONS: This record shall show the location of the corner and shall include all of the following nine elements (a through i).

(a) Identify the corner by reference to the U.S. public land survey system.

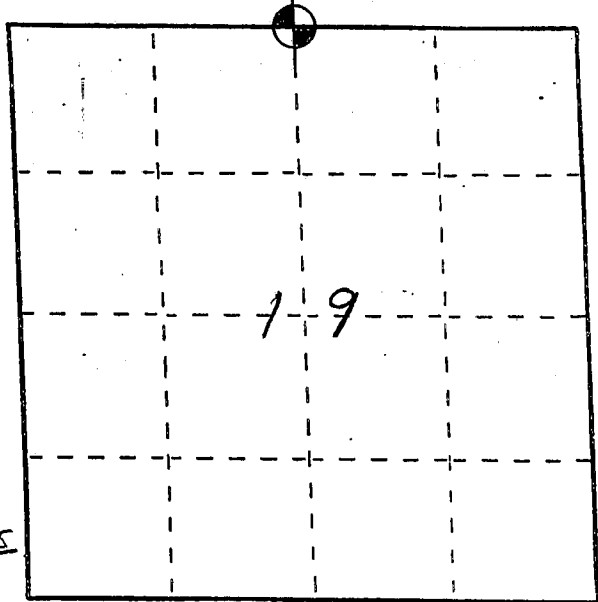
○ = Corner monument restored.

THE NORTH QUARTER CORNER
SECTION 19,
TOWN 6 NORTH,
RANGE 2 WEST,
CITY OF FENNIMORE,
GRANT COUNTY,
WISCONSIN.

GRANT COUNTY COORDINATES

N = 574852.5'

E = 833643.5'

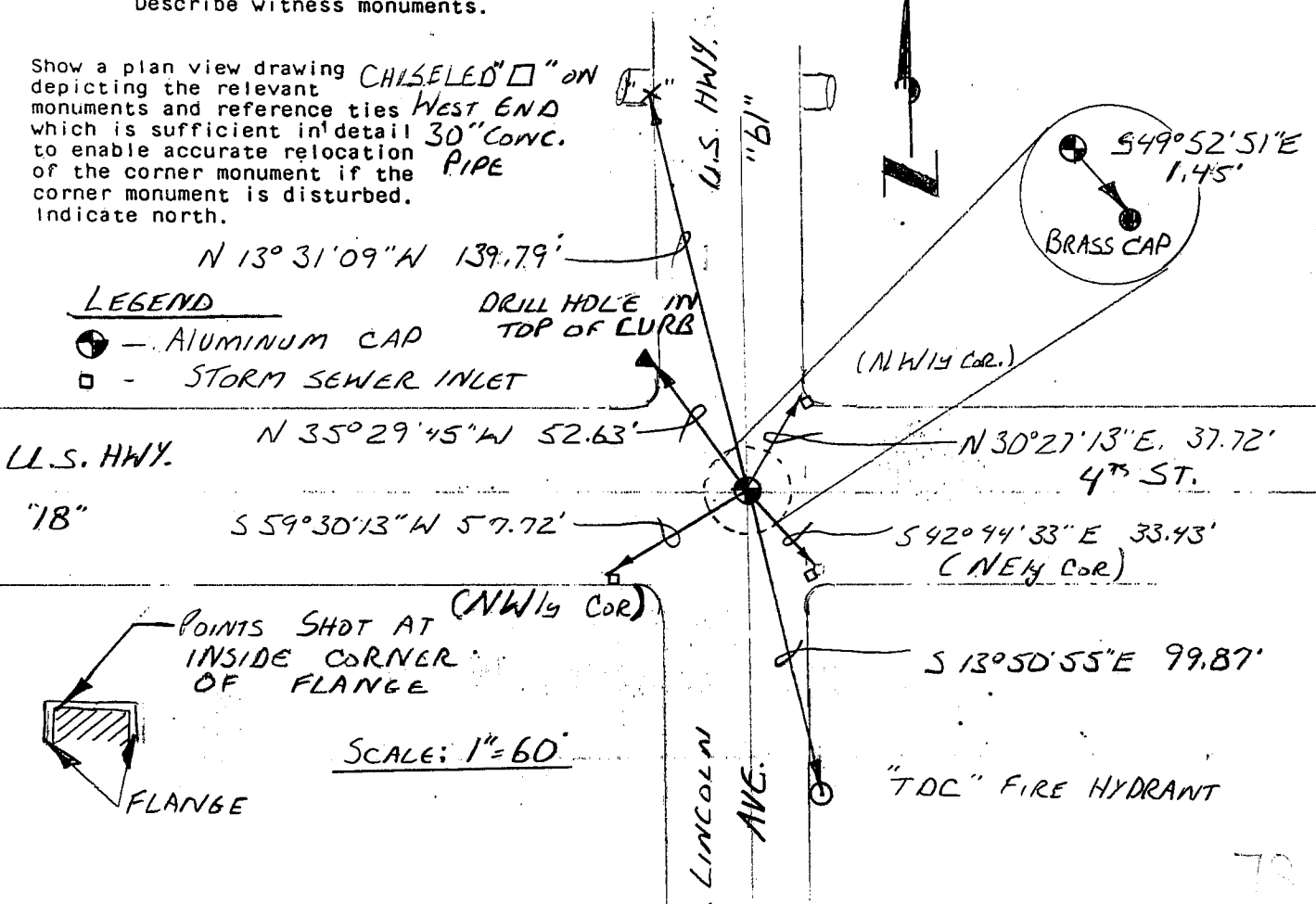


(b) Describe any record evidence, monument evidence, occupational evidence, testimonial evidence or any other material evidence you considered, and whether the monument was found or placed.

I FOUND AND ACCEPTED AN ALUM. CAP
SET BY DAVID K. KROHN - RLS 1309, 17 JUNE 1977.
ALL TIES WERE GONE EXCEPT A BRASS CAP
WHICH CHECKED BY DISTANCE. I SHOT NEW
TIES PER DRAWING BELOW.

(c) In the plan view drawing below, provide reference ties to at least 4 witness monuments, or, if the location is within a municipality, to at least 2 witness monuments. (Witness monuments shall be made of concrete, natural stone, iron or other equally durable material. Describe witness monuments.)

(d) Show a plan view drawing depicting the relevant monuments and reference ties which is sufficient in detail to enable accurate relocation of the corner monument if the corner monument is disturbed. Indicate north.



- (e) Describe any material discrepancy between the location of the corner as restored or reestablished and the location of that corner as previously restored or reestablished by distance and direction. Show the discrepancy on the plan view drawing under (d), above. Show the distances between the corner as previously restored or reestablished and (1) the corner as restored or reestablished, and (2) to at least 2 of the witness monuments shown on the drawing in (d), above.

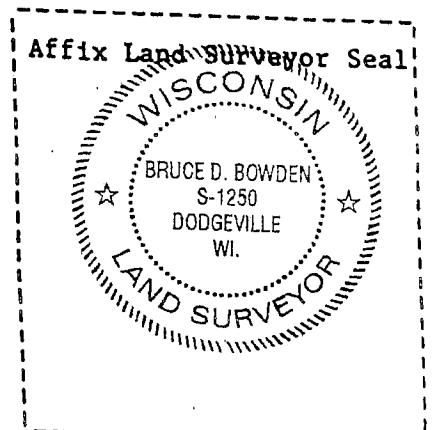
A BRASS CAP, S49°52'51"E, 1.95', FROM THE ALUM. CAP WAS DISAGREED WITH BY KRONIN IN 1977. WIS. D.O.T. PLANS DATED 5-11-1995 USED AN "ALUMINUM MONUMENT" AT THE NW CORNER OF U.S. HWYS 18/61. I FOUND A DRILL HOLE AT THE DOT CORNER LOCATION AND NOTED IT ON THIS TIC SHEET.

- (f) Was the corner restored through acceptance of (1) an obliterated evidence location, or, (2) a found perpetuated location?

(2) FOUND, PERPETUATED LOCATION.

- (g&h) Was the corner reestablished through lost corner proportionate methods? If so, show the method, including the directions and distances to other public land survey corners used as evidence or used for proportioning in determining the corner location?

No.



- (1) I, BRUCE D. BOWDEN, S-1250
(type or print name) certify that the corner location shown on this record was determined by me or under my direction and control and that this U.S. Public Land Survey Monument Record is correct and complete to the best of my knowledge and belief.

Bruce D. Bowden
Signature

JAN 28, 2002
Date

CITY OF FENNIMORE

RECORD OF CONTROL SURVEY STATION

QUARTER SECTION CORNER $\frac{18}{19}$ | $\frac{18}{19}$ TOWNSHIP 6 N, RANGE 2 W, GRANT COUNTY, WISCONSIN

GEODETIC SURVEY BY ALSTER & ASSOCIATES INC. ENGINEERS, MADISON, WISCONSIN.

STATE PLANE COORDINATES OF: QUARTER-SECTION CORNER
 NORTH 360,923.75
 EAST 1,824,621.23

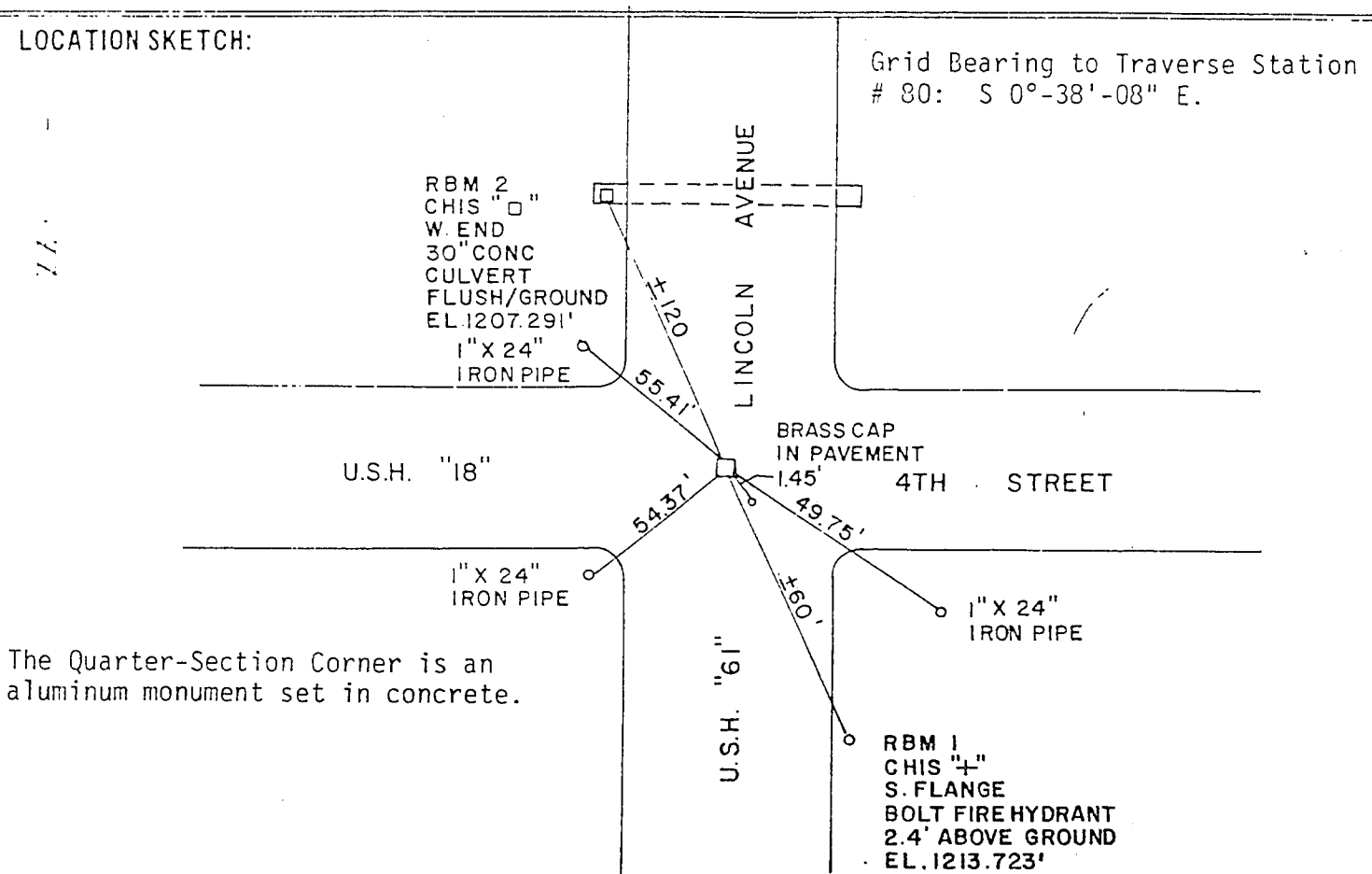
ELEVATION OF STATION: 1209.34' THETA ANGLE: -0°-27'-01"

HORIZONTAL DATUM: WISCONSIN STATE PLANE COORDINATE SYSTEM, SOUTH ZONE

VERTICAL DATUM: MEAN SEA LEVEL, 1929 ADJUSTMENT

HORIZONTAL & VERTICAL CONTROL ACCURACY: SECOND ORDER

LOCATION SKETCH:



SURVEYOR'S AFFIDAVIT:

STATE OF WISCONSIN) SS
 GRANT COUNTY)

I HEREBY CERTIFY THAT I, David K. Krohn, Registered Land Surveyor, hereby certify that I have established the corners from examination of the original government land survey notes, from previous surveys, from existing field evidence, from existing pertinent deeds of record and after a field survey of the sections.



DATE OF SURVEY 17 JUNE 1977

David K. Krohn
 REGISTERED LAND SURVEYOR

S- 1309

72
 85