

U.S. PUBLIC LAND SURVEY MONUMENT RECORD

(As Required By s. A-E 7.08, WI Adm. Code)

History of original corner establishment and subsequent restorations and description of any record, monument, occupational, testimonial or other evidence considered: I found no recent records of this corner. I computed the restored corner in line with a fence to the west and computed the easting at the proportional average distance of 5 1/2 mile legs per the original government survey from the E 1/4 corner. See section summary sheet for these distances.

Corner was: (Check All That Apply)

- Restored through acceptance of an obliterated evidence location
- Restored through acceptance of a found perpetuated location
- Considered a lost corner and reestablished through lost corner proportionate methods (include a plan view drawing showing distances and directions to other Public Land Survey Corners used for proportioning and determining the corner location)
- Restored or reestablished in a location that differs from a previous restoration or reestablishment (include a plan view drawing and indicate what was set and/or found)

Describe the monument and accessories used to perpetuate the location of this corner. (Include a plan view drawing and indicate what was set and/or found)

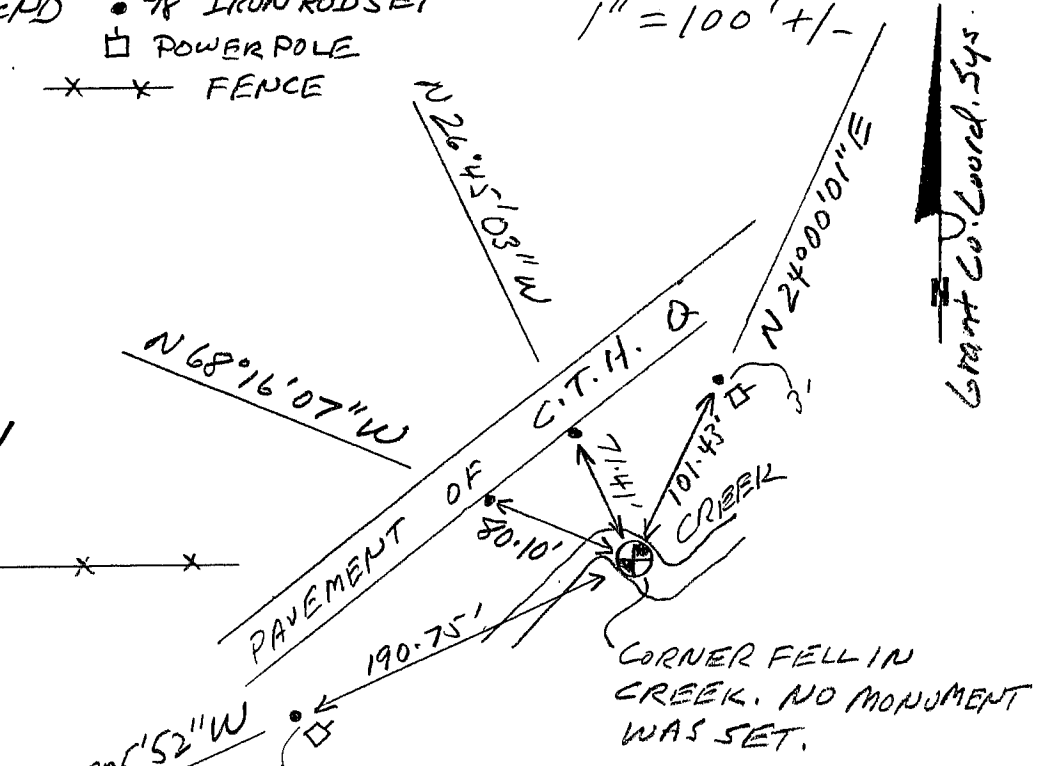
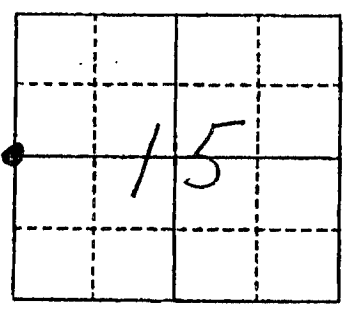
LEGEND • 3/8" IRON ROD SET
□ POWER POLE
x-x FENCE

1" = 100' +/-

Grant Co. Coords.
N 577509.07
E 846925.17

The W 1/4
corner of Section 15
T. 6 N., R. 2 E. N
Grant County, Wisconsin

Job ID: 200551
Book # 9



Grant Co. Coord. Sys.

● = Location of Corner

Michael R. LaRosa

Type or print name certify that the corner location shown on this record was determined by me or under my direction and control and that this U.S. Public Land Survey Monument Record is correct and complete to the best of my knowledge and belief.

Michael R. LaRosa 7/28/2005

Signature

Date



Index No. 57