

# GRANT COUNTY CERTIFIED LAND CORNER

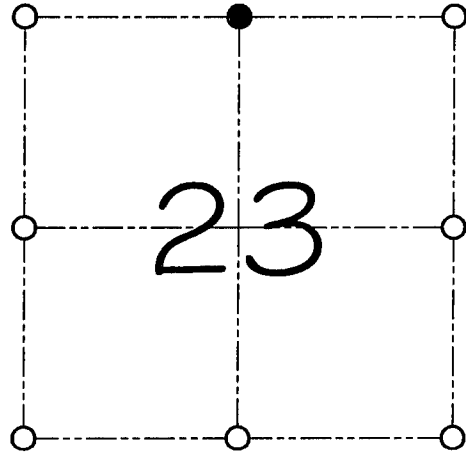
CORNER NUMBER 64

**CERTIFICATE:**

I, Larry L. Austin, do hereby certify that on the 15th day of March, 2000, I found evidence of the North 1/4 corner of Section 23, Town 6 North, Range 2 West, of the 4th Principal Meridian, and I re-established said corner according to the Wisconsin statutes as shown and described hereon.

Dated this 25th day of March, 2000

*Larry L. Austin*  
Larry L. Austin S-1903



● = CORNER LOCATION  
NORTH 1/4 CORNER OF SECTION 23, T 6 N R 2 W TOWN OF FENNIMORE

**HISTORY OF ORIGINAL CORNER ESTABLISHMENT:**

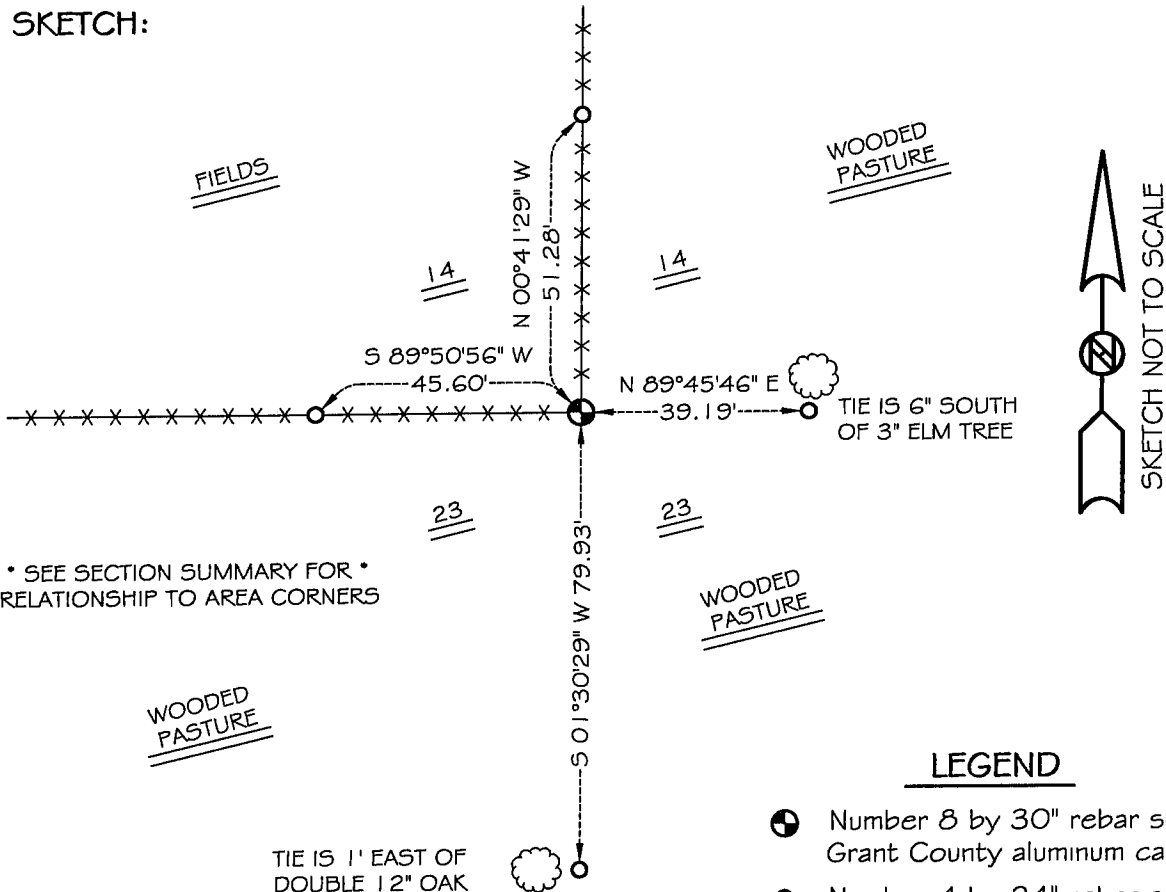
Corner was originally set in 1832 by Harvey Parke.  
No other record of the corner was found.

**DESCRIPTION OF CORNER EVIDENCE FOUND:**

I found an occupied fence corner and accepted it's location after an E.D.M. & G.P.S. traverse of the area.

**DESCRIPTION OF CORNER AND WITNESS MONUMENTS, references and accessories used to perpetuate the original or re-established location of this corner**  
WITNESS TO THE CORNER LOCATION: SHANE AUSTIN & SHELBY BLINDERT

**SKETCH:**



\* SEE SECTION SUMMARY FOR \*  
RELATIONSHIP TO AREA CORNERS

**LEGEND**

- Number 8 by 30" rebar set with Grant County aluminum cap
- Number 4 by 24" rebar set with red plastic cap
- x— Existing fence location