

FEB 12 1995

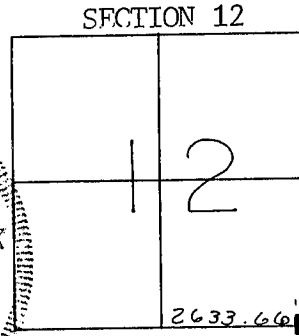
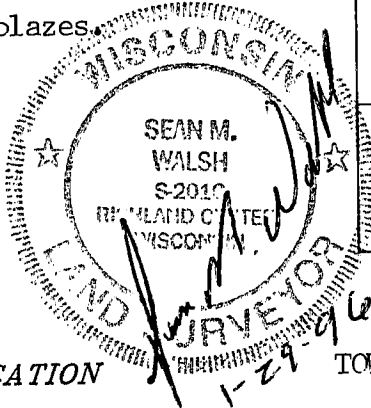
GRANT COUNTY

SURVEY MONUMENT RECORD

TYPE OF MONUMENT: 3/4" X 24" IRON ROD PLACED
TIES ARE AS INDICATED ON SKETCH
 Ties are 60d pole spikes set in blazes.

WITNESSES TO CORNER LOCATION

Sean M. Walsh
 Christopher G. Reedy
 Thomas M. Dobbs



CORNER LOCATION
 T 6 N, R 2 W
 TOWN OF FENNIMORE

BASIS FOR MONUMENT LOCATION

After an extensive search of the Grant County Survey Records I was not able to find any reference to this corner subsequent to the Original Gov't Survey. No evidence of the Original Gov't. monumentation or witnesses remain.

During a field search of the area I located a split in the fence which occupies the South line of Section 12. This location fits extremely well with the original gov't. distance along the South line of Section 12.

I accepted this location as I believe it to provide the best available evidence.

I monumented and perpetuated this corner in accordance with the information contained hereon and I hereby certify that this information is correct and true to the best of my information, knowledge and belief.

