

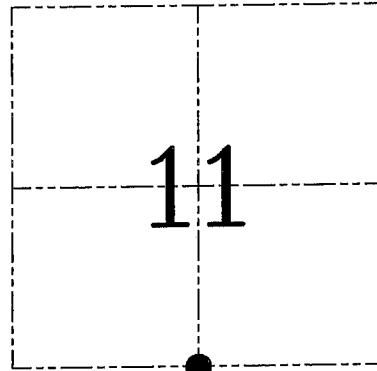
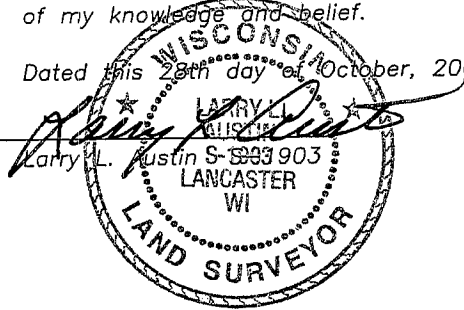
U.S. PUBLIC LAND SURVEY MONUMENT RECORD – GRANT COUNTY, WI

Section 11, Town 6 North Range 2 West, Town of Fennimore

CERTIFICATE

I, Larry L. Austin, do hereby certify that the corner location on this record was determined by me and/or under my direct supervision and that this U.S. public land survey monument record is correct and complete to the best of my knowledge and belief.

Dated this 28th day of October, 2005



● = CORNER LOCATION

HISTORY OF CORNER ESTABLISHMENT

Corner was originally set in 1833 by Parke.
No other records were found.

DESCRIPTION OF CORNER EVIDENCE FOUND

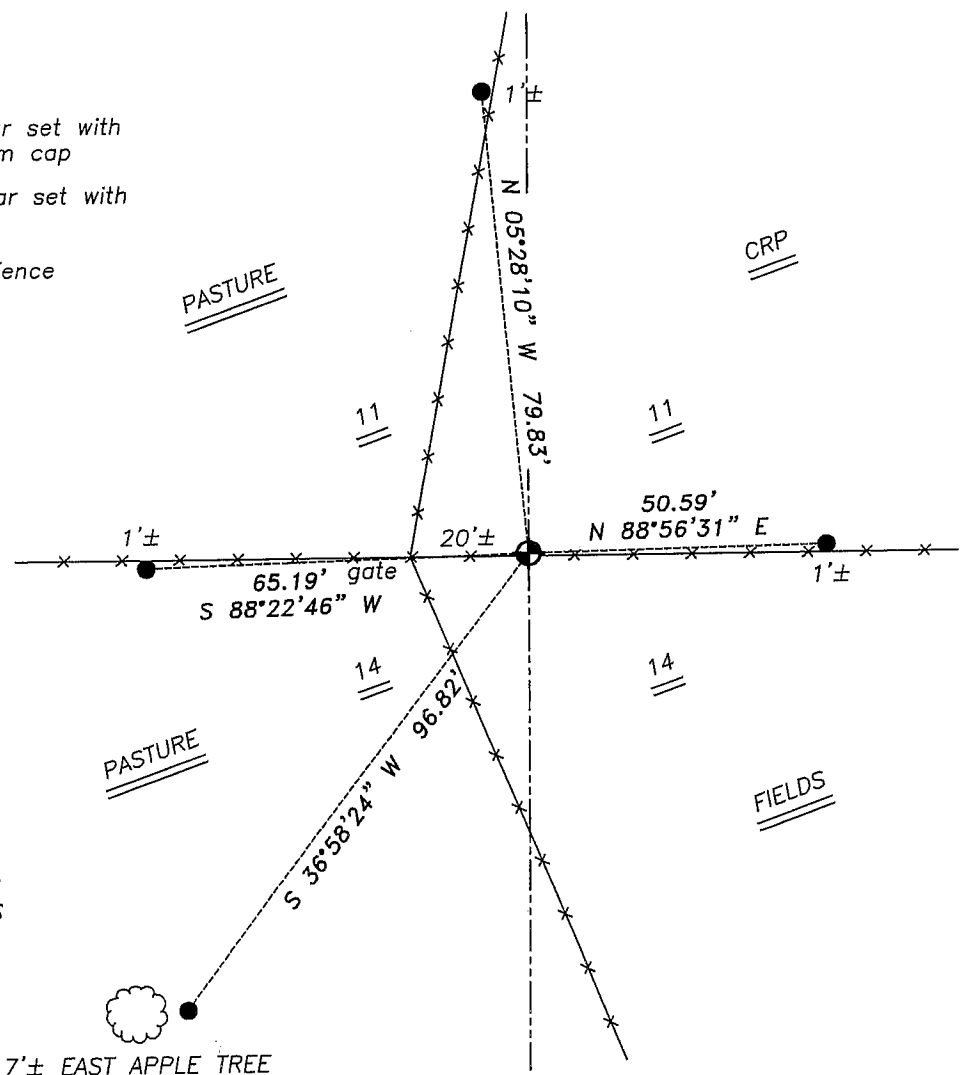
I set the corner proportionately and on-line between the Southeast and Southwest Corner of Section 11.
I verified this location using E.D.M. and GPS methods.

DESCRIPTION OF CORNER AND WITNESS MONUMENTS, references and accessories used to perpetuate the original or re-established location of this corner. Witnesses to corner location Bobby Sedgwick & Brad Digman & Shane Austin

SKETCH:

LEGEND

- ⊕ Number 8 x 30" rebar set with Grant County Aluminum cap
- Number 4 x 24" Rebar set with red plastic "TIE" cap
- x— Approximate existing fence



* SEE SECTION SUMMARY FOR *
RELATIONSHIP TO AREA CORNERS

SKETCH NOT TO SCALE



Austin Engineering LLC

4211 HWY 81 E, LANCASTER, WI 53813
PHONE 608-723-6363 FAX 608-723-6702

JOB NUMBER 05S204
FIELDBOOK: TDSR, 2511
G:\T7NR2W\35
H:\TIE\T6NR2W\44

DRAWN BY: SW AUSTIN
APPROVED: LL AUSTIN