

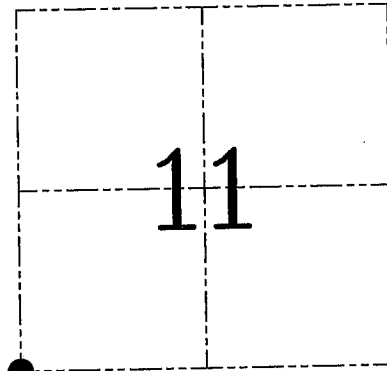
**U.S. PUBLIC LAND SURVEY MONUMENT RECORD – GRANT COUNTY, WI**  
**Section 11, Town 6 North Range 2 West, Town of Fennimore**

CERTIFICATE

I, Larry L. Austin, do hereby certify that the corner location on this record was determined by me and/or under my direct supervision and that this U.S. public land survey monument record is correct and complete to the best of my knowledge and belief.

Dated this 28th day of October, 2005

Larry L. Austin



● = CORNER LOCATION

HISTORY OF CORNER ESTABLISHMENT

Corner was originally set in 1833 by Parke.  
 In 1985 Chafer set and tied this corner. No other records were found.

DESCRIPTION OF CORNER EVIDENCE FOUND

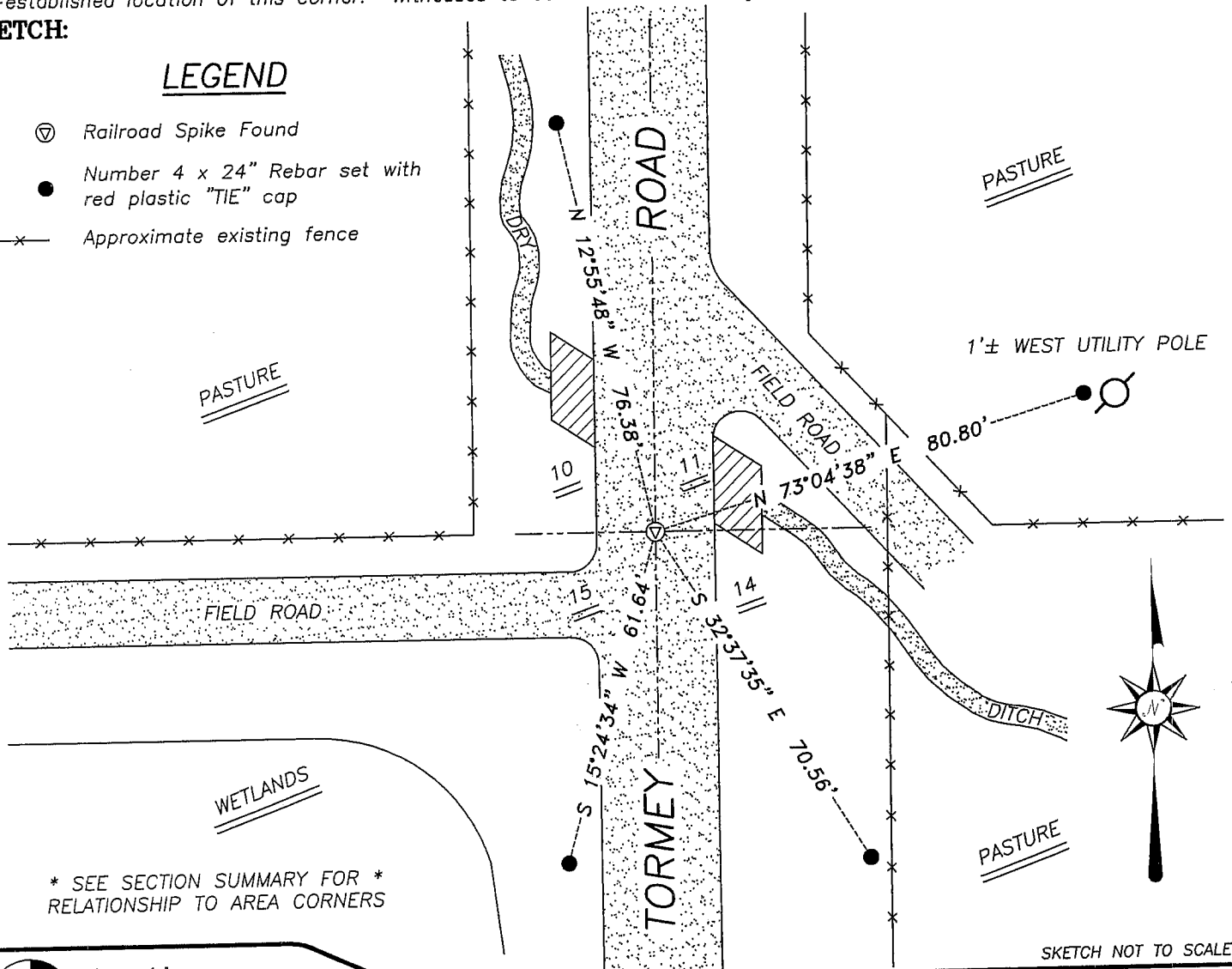
I found the existing Railroad Spike and excepted it's location after an EDM/GPS traverse of the area.

DESCRIPTION OF CORNER AND WITNESS MONUMENTS, references and accessories used to perpetuate the original or re-established location of this corner. Witnesses to corner location Bobby Sedgwick & Brad Digman & Shane Austin

**SKETCH:**

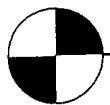
LEGEND

- ⊙ Railroad Spike Found
- Number 4 x 24" Rebar set with red plastic "TIE" cap
- x- Approximate existing fence



\* SEE SECTION SUMMARY FOR \*  
 RELATIONSHIP TO AREA CORNERS

SKETCH NOT TO SCALE



**Austin Engineering LLC**

4211 HWY 81 E, LANCASTER, WI 53813  
 PHONE 608-723-6363 FAX 608-723-6702

JOB NUMBER 05S204  
 FIELDBOOK: TDSR, 2511  
 G:\T7NR2W\35  
 H:\TIE\T6NR2W\45

DRAWN BY: SW AUSTIN  
 APPROVED: LL AUSTIN

Jennimore

FORM NO. 985-A

H.C. Miller Company

# RECORD OF CORNER MONUMENTATION

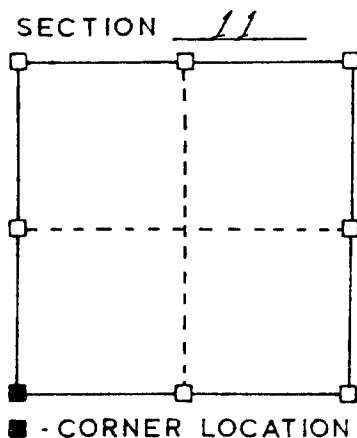
SW CORNER, SECTION 11 TOWNSHIP 6 N., RANGE 2 W.  
GRANT COUNTY, WISCONSIN.

STATE PLANE COORDINATES OF \_\_\_\_\_  
(Y) NORTH \_\_\_\_\_ ELEVATION \_\_\_\_\_  
(X) EAST \_\_\_\_\_

HORIZONTAL DATUM: WISCONSIN STATE PLANE COORDINATE SYSTEM, SOUTH ZONE



SKETCH OF CORNER REFERENCE TIES



TYPE OF MONUMENT:

RAILROAD SPIKE\*

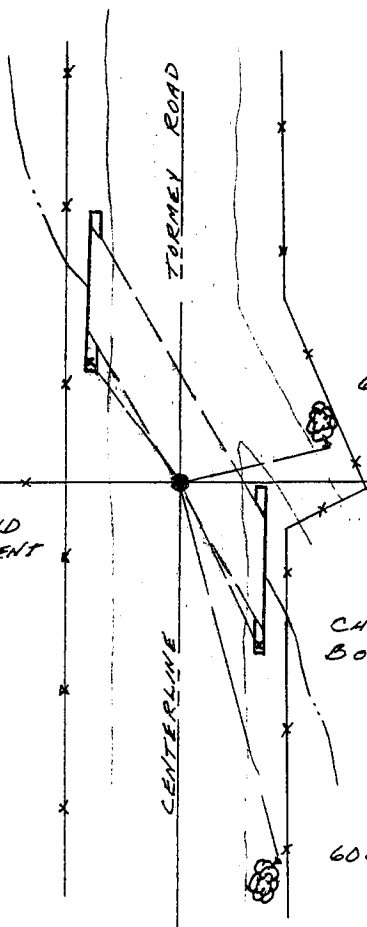
CHISELED "X" S.W. WING  
BOX CULVERT 27.55'

60d SPIKE 9"Ø WALNUT  
49.38'

RAILROAD SPIKE FOUND  
AT CENTER OF PAVEMENT

CHISELED "X" S.E. WING  
BOX CULVERT 13.81'

60d SPIKE 10"Ø WALNUT  
66.68'



\* RAILROAD SPIKE FOUND AND REFERENCES PLACED 12-06-85

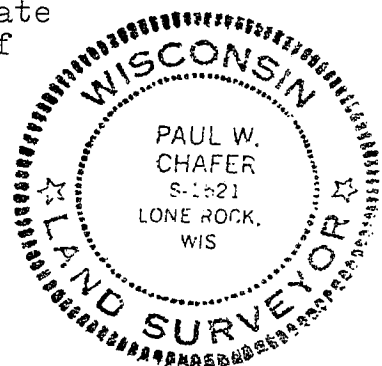
SURVEYOR'S CERTIFICATE  
STATE OF WISCONSIN)  
Grant County )

I HEREBY CERTIFY THAT I have located the above corner and taken the reference ties as shown above to perpetuate the corner. The above representation is to the best of my knowledge and belief correct.

DATED THIS 19 DAY OF Dec.  
1985

Paul W. Chafer  
REGISTERED LAND SURVEYOR  
S-1521

JAN 22 1986



RECEIVED

RECEIVED