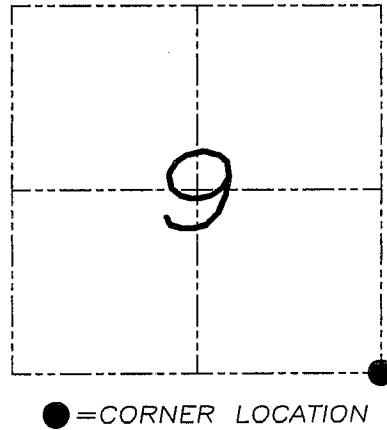


U.S. PUBLIC LAND SURVEY MONUMENT RECORD

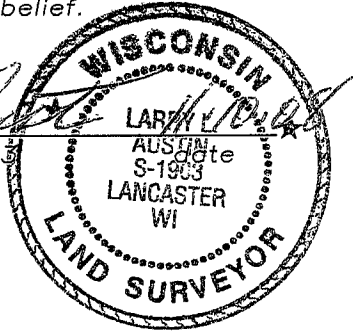
Section 9, Town 6 North Range 2 West, Town of Fennimore, Grant County, Wisconsin

CERTIFICATE

I, Larry L. Austin, do hereby certify that the corner location on this record was determined by me and/or under my direct supervision and that this U.S. public land survey monument record is correct and complete to the best of my knowledge and belief.



Larry L. Austin
Larry L. Austin, S-1903



HISTORY OF CORNER

Corner was originally set in 1833 by Parke.
No recent record of the corner was found.



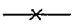
CORNER EVIDENCE FOUND

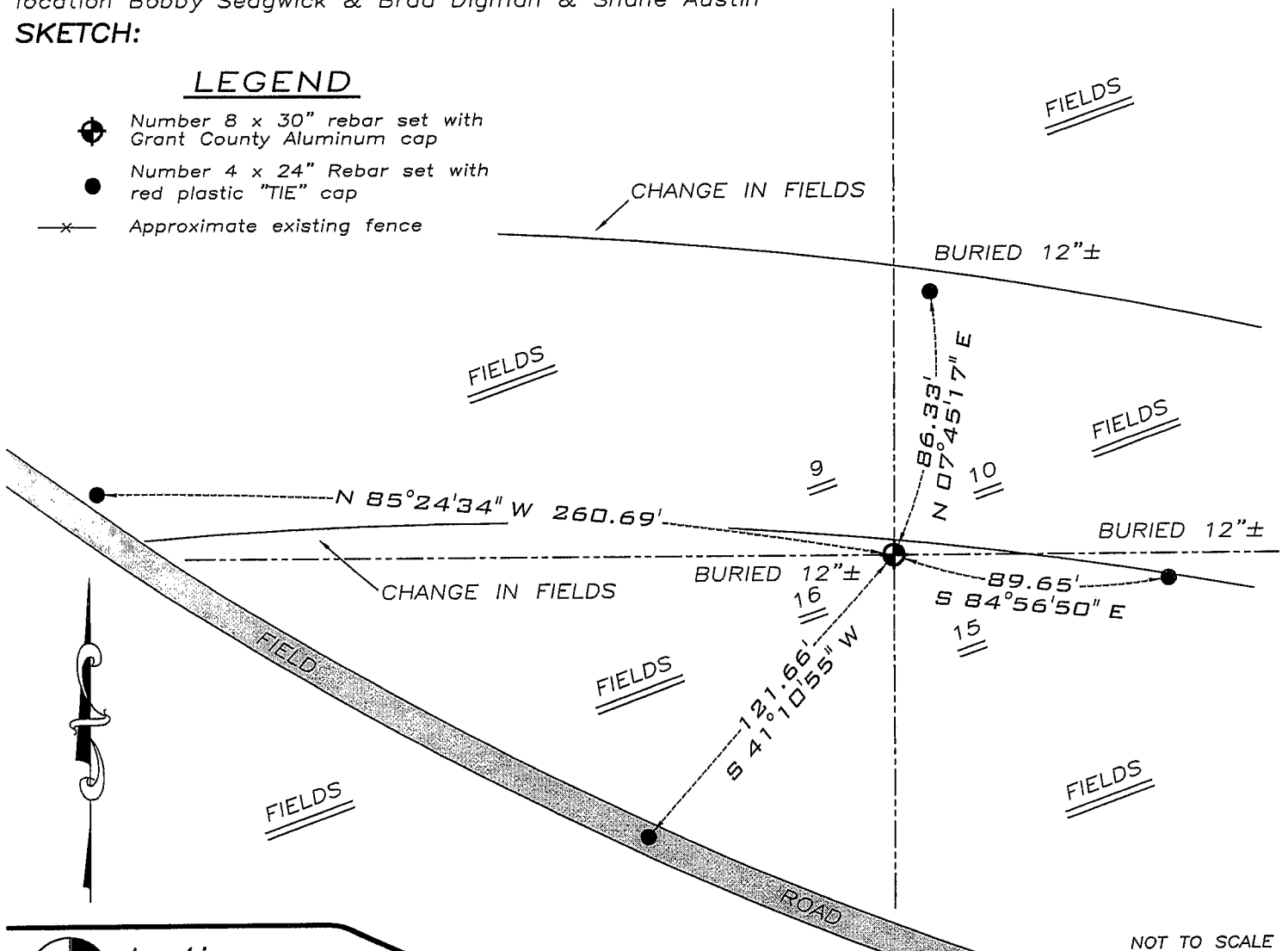
I reset the corner proportionately and on-line between the South 1/4 of Section 9, and the South 1/4 of Section 10. Verified this location using EDM & GPS methods.

DESCRIPTION OF CORNER AND WITNESS MONUMENTS, references and accessories used to perpetuate the original or re-established location of this corner. Witnesses to monument location Bobby Sedgwick & Brad Digman & Shane Austin

SKETCH:

LEGEND

-  Number 8 x 30" rebar set with Grant County Aluminum cap
-  Number 4 x 24" Rebar set with red plastic "TIE" cap
-  Approximate existing fence



Austin
Engineering LLC

4211 HWY 81 E, LANCASTER, WI 53813
PHONE 608-723-6363 FAX 608-723-6702

JOB NUMBER 08S194
FIELDBOOK: TDSR, 2812
G:\T7NR2W\35
H:\TIE\T6NR2W\47

DRAWN BY: SW AUSTIN
APPROVED: LL AUSTIN

NOT TO SCALE