

# GRANT COUNTY CERTIFIED LAND CORNER

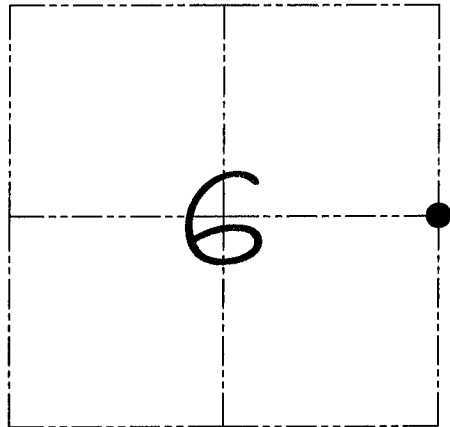
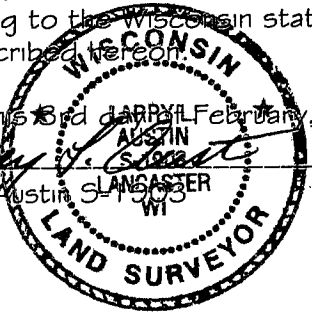
CORNER NUMBER 15

**CERTIFICATE:**

I, Larry L. Austin, do hereby certify that on the 15th day of December, 1999, I found evidence of the East 1/4 corner of Section 06, Town 6 North, Range 2 West, of the 4th Principal Meridian, and I re-established said corner according to the Wisconsin statutes as shown and described hereon.

Dated this 3rd day of February, 2000

*Larry L. Austin*  
Larry L. Austin, Surveyor



● = CORNER LOCATION

**EAST 1/4 CORNER OF  
SECTION 06, T 6 N R 2 W  
TOWN OF FENNIMORE**

Grant County Coor.

N 588087.0

E 836190.5

SEAL

**HISTORY OF ORIGINAL CORNER ESTABLISHMENT:**

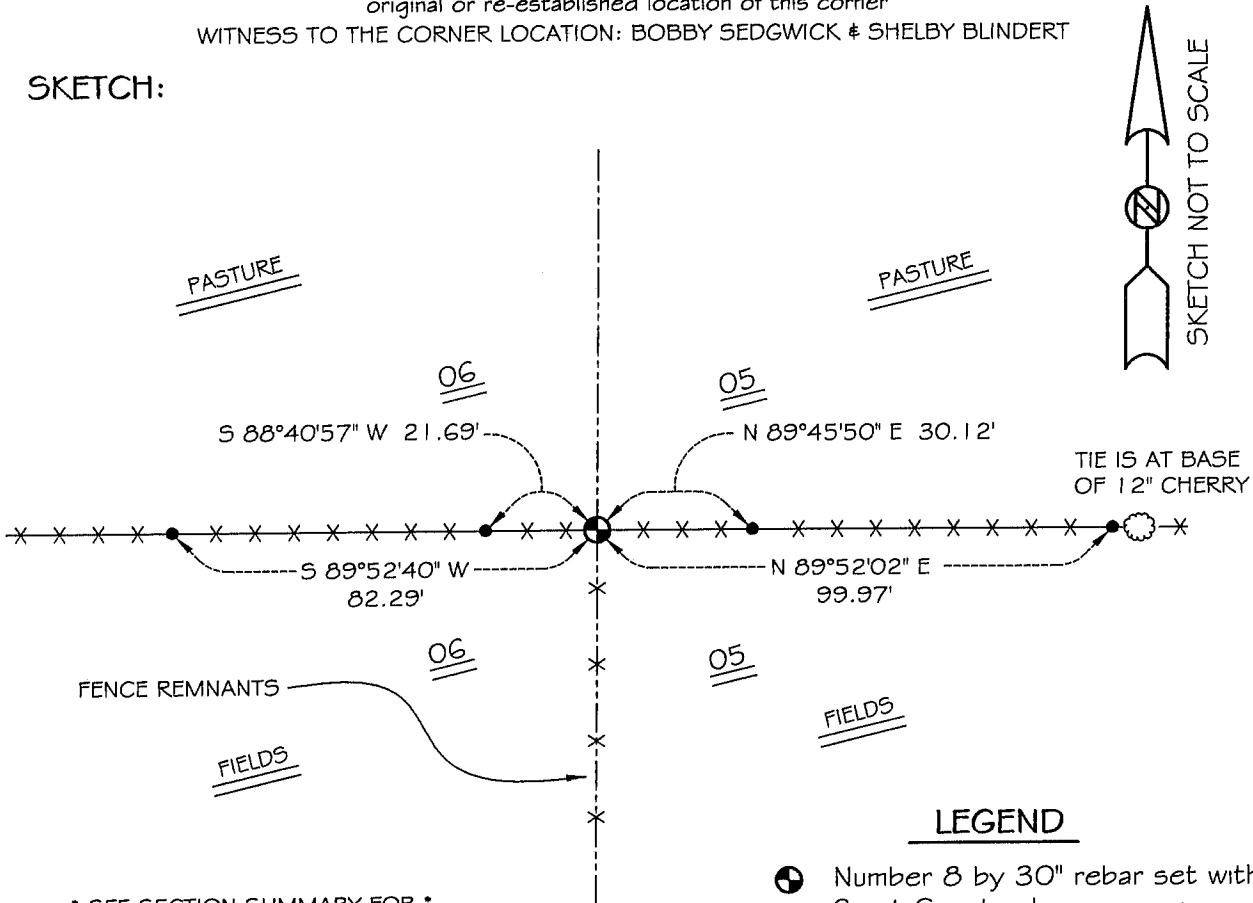
Corner was originally set in 1833 by Harvey Parke.  
No other record of the corner was found.

**DESCRIPTION OF CORNER EVIDENCE FOUND:**

I found an existing fence corner and accepted it's location after a local landowner verified it to be a long standing occupied location. Verified it's location using E.D.M. and G.P.S. methods.

**DESCRIPTION OF CORNER AND WITNESS MONUMENTS, references and accessories used to perpetuate the original or re-established location of this corner**  
WITNESS TO THE CORNER LOCATION: BOBBY SEDGWICK & SHELBY BLINDERT

**SKETCH:**



\* SEE SECTION SUMMARY FOR \*  
RELATIONSHIP TO AREA CORNERS

**LEGEND**

- Number 8 by 30" rebar set with Grant County aluminum cap
- Number 4 by 24" rebar set with red plastic cap
- x-x- Existing fence location