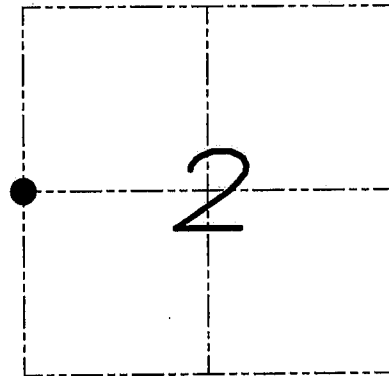


# U.S. PUBLIC LAND SURVEY MONUMENT RECORD

Section 2, Town 6 North Range 2 West, Town of Fennimore, Grant County, Wisconsin

## CERTIFICATE

I, Larry L. Austin, do hereby certify that the corner location on this record was determined by me and/or under my direct supervision and that this U.S. public land survey monument record is correct and complete to the best of my knowledge and belief.



● = CORNER LOCATION

*Larry L. Austin* 5.1.08  
 Larry L. Austin, S-1903 date

## HISTORY OF CORNER

Corner was originally set in 1833 by Parke. No other recent record of the corner was found.

## CORNER EVIDENCE FOUND

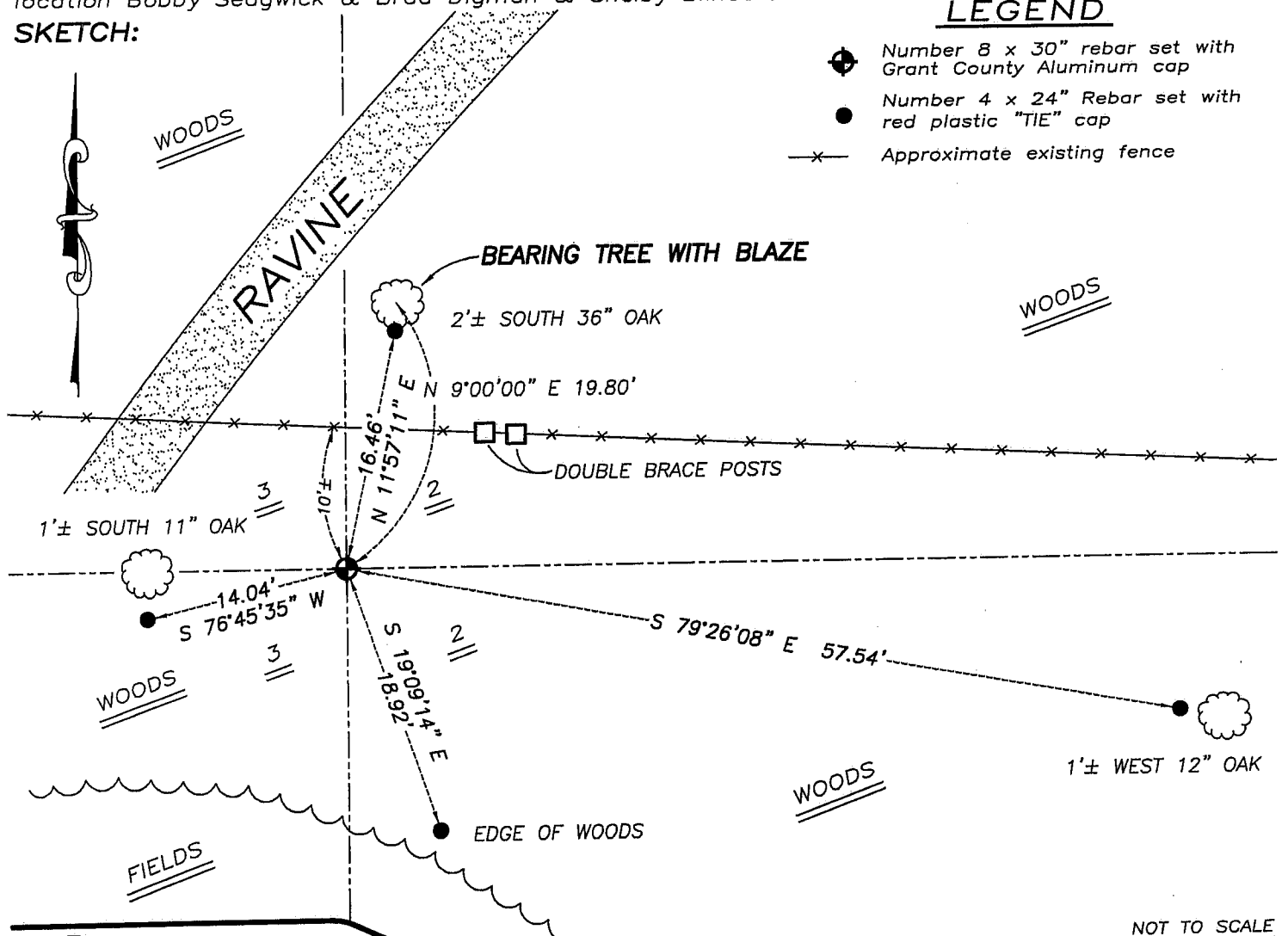
I reset the corner at the recorded bearing and distance from the existing bearing tree. Verified this location using EDM & GPS methods.

**DESCRIPTION OF CORNER AND WITNESS MONUMENTS**, references and accessories used to perpetuate the original or re-established location of this corner. Witnesses to monument location Bobby Sedgwick & Brad Digman & Shelby Blindert

## SKETCH:

## LEGEND

- Number 8 x 30" rebar set with Grant County Aluminum cap
- Number 4 x 24" Rebar set with red plastic "TIE" cap
- x— Approximate existing fence



NOT TO SCALE

**Austin Engineering LLC**

4211 HWY 81 E, LANCASTER, WI 53813  
 PHONE 608-723-6363 FAX 608-723-6702

JOB NUMBER 08S016  
 FIELDBOOK: TDSR, 2800  
 G:\T7NR2W\35  
 H:\TIE\T6NR2W\18

DRAWN BY: SW AUSTIN  
 APPROVED: LL AUSTIN