

GRANT COUNTY CERTIFIED LAND CORNER

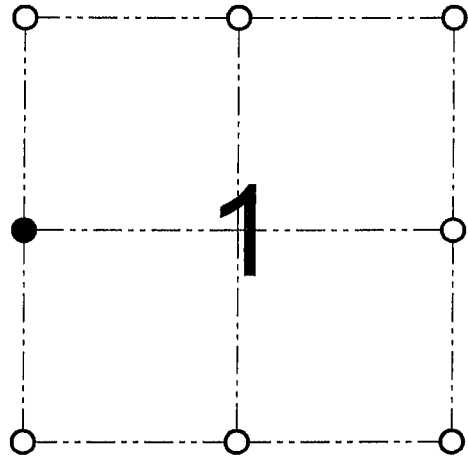
CORNER NUMBER 19

CERTIFICATE:

I, Larry L. Austin, do hereby certify that on the 27th day of December, 2000, I found no evidence of the West 1/4 corner of Section 1, Town 6 North, Range 2 West, of the 4th Principal Meridian, and I re-established said corner according to the Wisconsin statutes as shown and described hereon.

Dated this 12th day of January, 2001

Larry L. Austin
Larry L. Austin S-1903



● = CORNER LOCATION
WEST 1/4 CORNER OF SECTION 1, T 6 N R 2 W TOWN OF FENNIMORE

HISTORY OF ORIGINAL CORNER ESTABLISHMENT:

Corner was originally set in 1833 by Harvey Parke.
No other record of the corner was found.

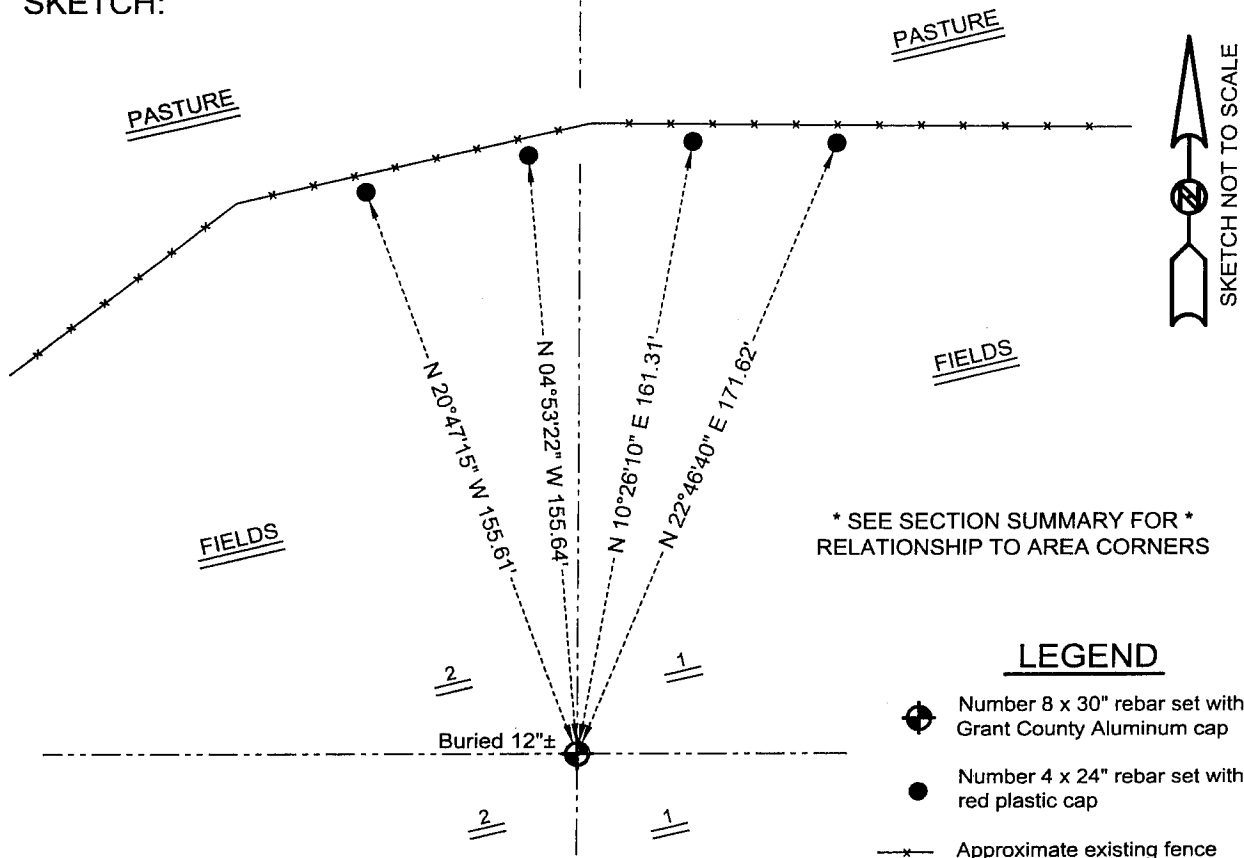
DESCRIPTION OF CORNER EVIDENCE FOUND:

I found no evidence to the location of the corner. I set the corner proportionately between the Northwest and Southwest corners of Section 1. Verified this location using EDM & GPS methods.
~ See Section summary for additional information regarding this corner ~

DESCRIPTION OF CORNER AND WITNESS MONUMENTS, references and accessories used to perpetuate the original or re-established location of this corner

WITNESS TO THE CORNER LOCATION: SHANE AUSTIN & SHELBY BLINDERT & BOBBY SEDGWICK

SKETCH:



AUSTIN ENGINEERING, LLC
4211 HWY 81 E, LANCASTER, WI 53813
PHONE 608-723-6363 FAX 608-723-6702

FIELDBOOK: SDR33, 9809
G:\T7NR2W\35
C:\SC14\SWA\TIE\T6NR2W\19

DRAWN BY: SW AUSTIN
APPROVED: LL AUSTIN
CREW: BS - SB - SA - TF