

# GRANT COUNTY CERTIFIED LAND CORNER

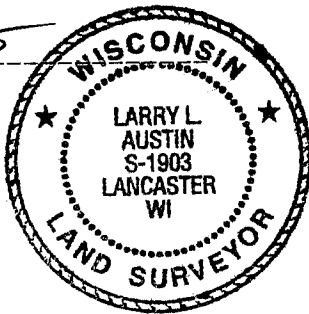
CORNER NUMBER 20

**CERTIFICATE:**

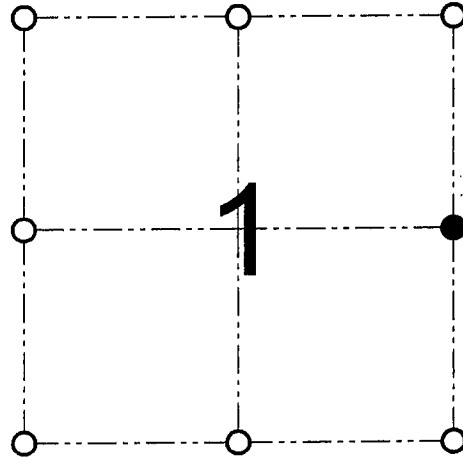
I, Larry L. Austin, do hereby certify that on the 27th day of December, 2000, I found evidence of the East 1/4 corner of Section 1, Town 6 North, Range 2 West, of the 4th Principal Meridian, and I re-established said corner according to the Wisconsin statutes as shown and described hereon.

Dated this 12 day of January, 2001

*Larry L. Austin*  
Larry L. Austin S-1903



SEAL



● = CORNER LOCATION

EAST 1/4 CORNER OF SECTION 1, T 6 N R 2 W TOWN OF FENNIMORE

**HISTORY OF ORIGINAL CORNER ESTABLISHMENT:**

Corner was originally set in 1832 by Sibley.  
No other record of the corner was found.

**DESCRIPTION OF CORNER EVIDENCE FOUND:**

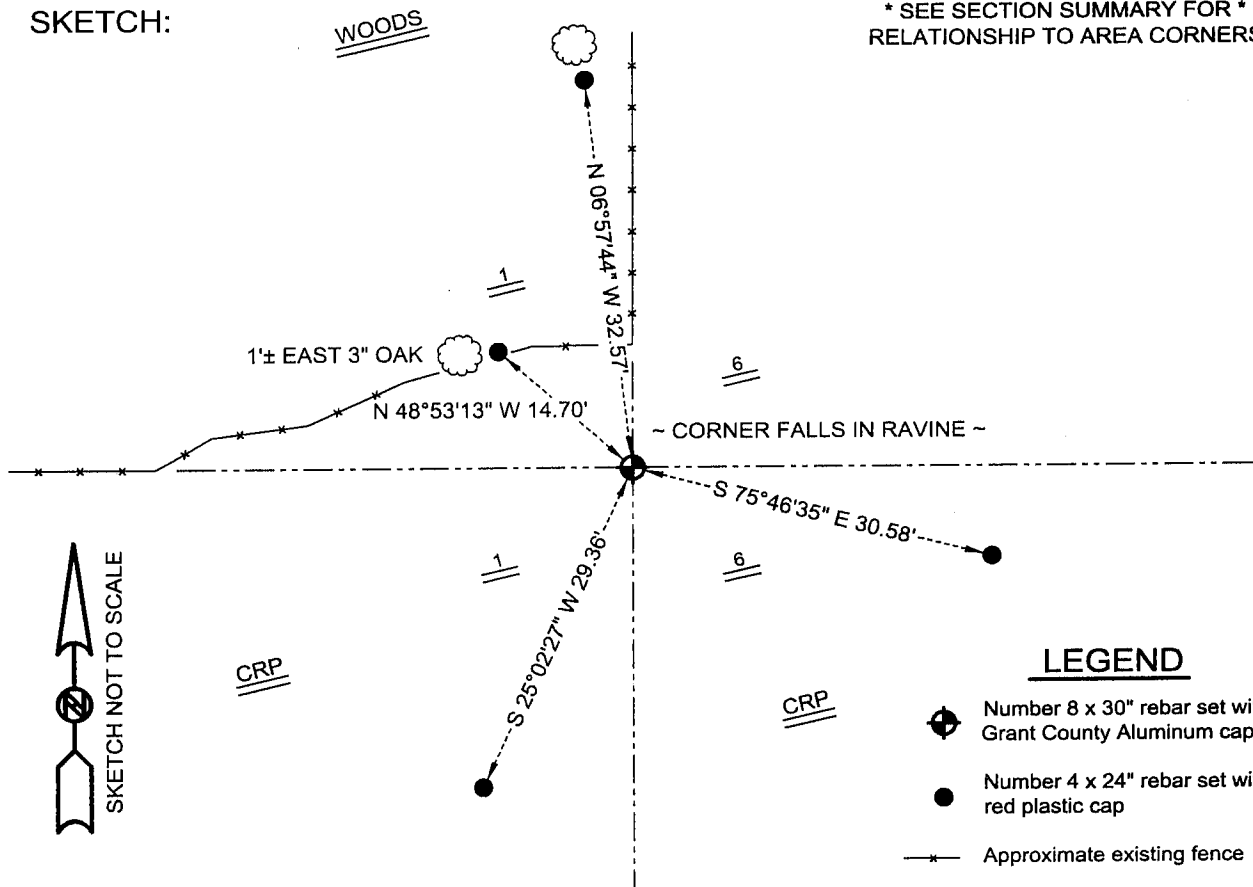
Corner was set based on occupational evidence and verified by other measurements to the area corners. Verified this location using EDM & GPS methods.

**DESCRIPTION OF CORNER AND WITNESS MONUMENTS, references and accessories used to perpetuate the original or re-established location of this corner**

WITNESS TO THE CORNER LOCATION: SHANE AUSTIN & SHELBY BLINDERT & BOBBY SEDGWICK

**SKETCH:**

\* SEE SECTION SUMMARY FOR \*  
RELATIONSHIP TO AREA CORNERS



**LEGEND**

- Number 8 x 30" rebar set with Grant County Aluminum cap
- Number 4 x 24" rebar set with red plastic cap
- Approximate existing fence

**AUSTIN ENGINEERING, LLC**  
4211 HWY 81 E, LANCASTER, WI 53813  
PHONE 608-723-6363 FAX 608-723-6702

FIELDBOOK: SDR33, 9809  
G:\T7NR2W\35  
C:\SC14\SWA\TIE\T6NR2W\20

DRAWN BY: SW AUSTIN  
APPROVED: LL AUSTIN  
CREW: BS - SB - SA - TF