

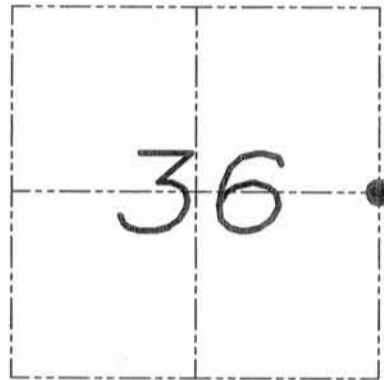
# U.S. PUBLIC LAND SURVEY MONUMENT RECORD

Section 36, Town 6 North Range 1 West, Town of Wingville, Grant County, Wisconsin

## CERTIFICATE

I, Larry L. Austin, do hereby certify that the corner location on this record was determined by me and/or under my direct supervision and that this U.S. public land survey monument record is correct and complete to the best of my knowledge and belief.

*Larry L. Austin*  
 Larry L. Austin, S-1903



● = CORNER LOCATION

## HISTORY OF CORNER

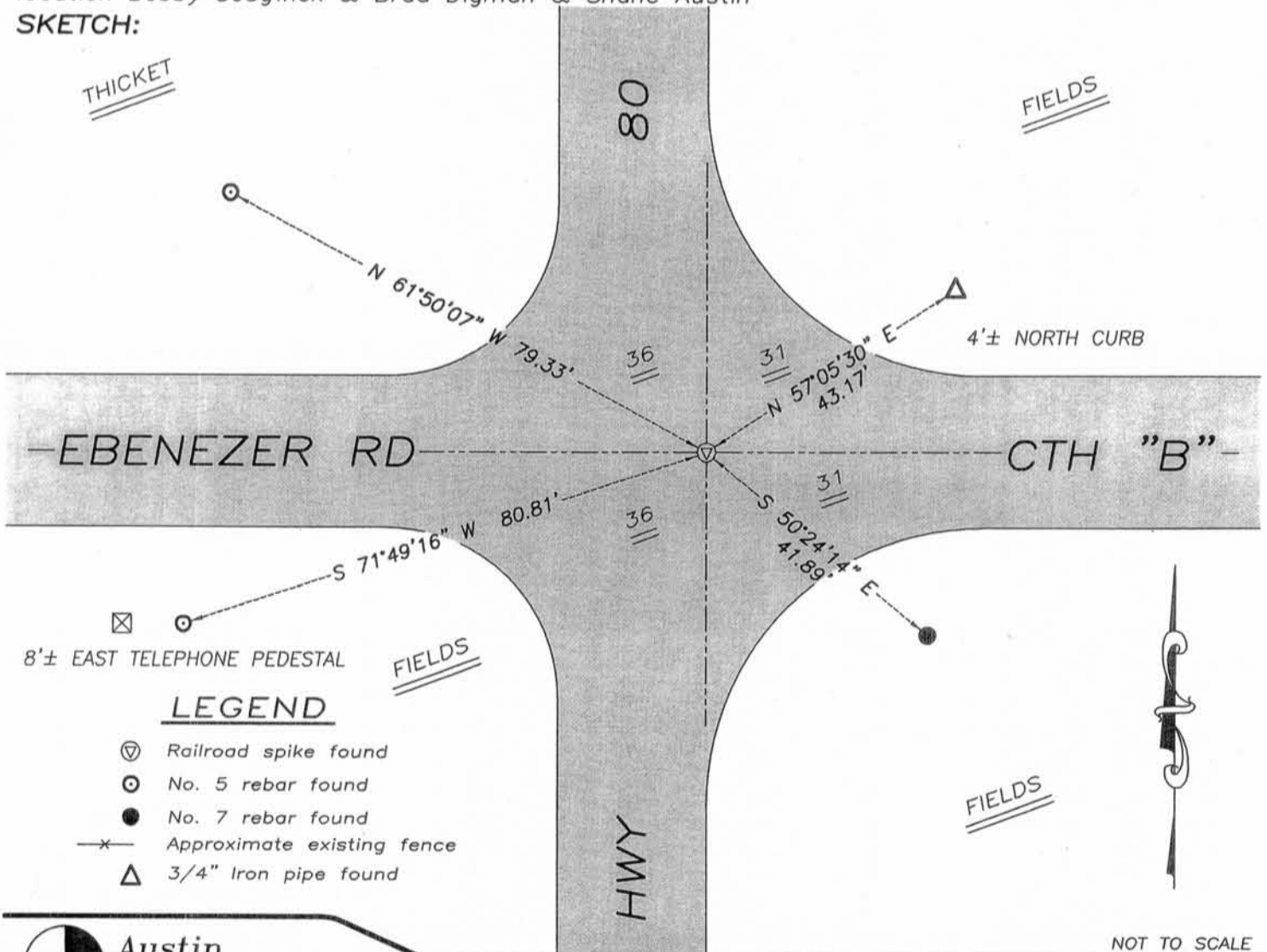
Corner was originally set in 1832 by Lyon. In 1986 Halverson set and tied out the corner. No other record of the corner was found.

## CORNER EVIDENCE FOUND

I measured the monument prior to road construction. I reset a monument after road construction and tied as shown below. Verified this location using EDM & GPS methods.

DESCRIPTION OF CORNER AND WITNESS MONUMENTS, references and accessories used to perpetuate the original or re-established location of this corner. Witnesses to monument location Bobby Sedgwick & Brad Digman & Shane Austin

## SKETCH:



### LEGEND

- ⊙ Railroad spike found
- ⊙ No. 5 rebar found
- No. 7 rebar found
- x- Approximate existing fence
- △ 3/4" Iron pipe found



**Austin Engineering LLC**

4211 HWY 81 E, LANCASTER, WI 53813  
 PHONE 608-723-6363 FAX 608-723-6702

JOB NUMBER 08S249-WIDOT  
 FIELDBOOK: TDSR, 2810-B  
 G:\GRANTDOT\T6NR1W  
 H:\TIE\T6NR1W\120

DRAWN BY: SW AUSTIN  
 APPROVED: LL AUSTIN

NOT TO SCALE

120

JUN 28 2010

# U.S. PUBLIC LAND SURVEY MONUMENT RECORD

Wisconsin Department of Transportation

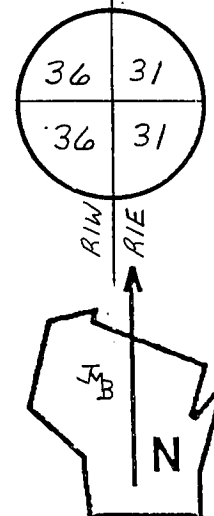
DT1291 96 (Replaces ED716)

T. 6 N. - R. 1 E.  
 4th Principal Meridian  
 Corner 114

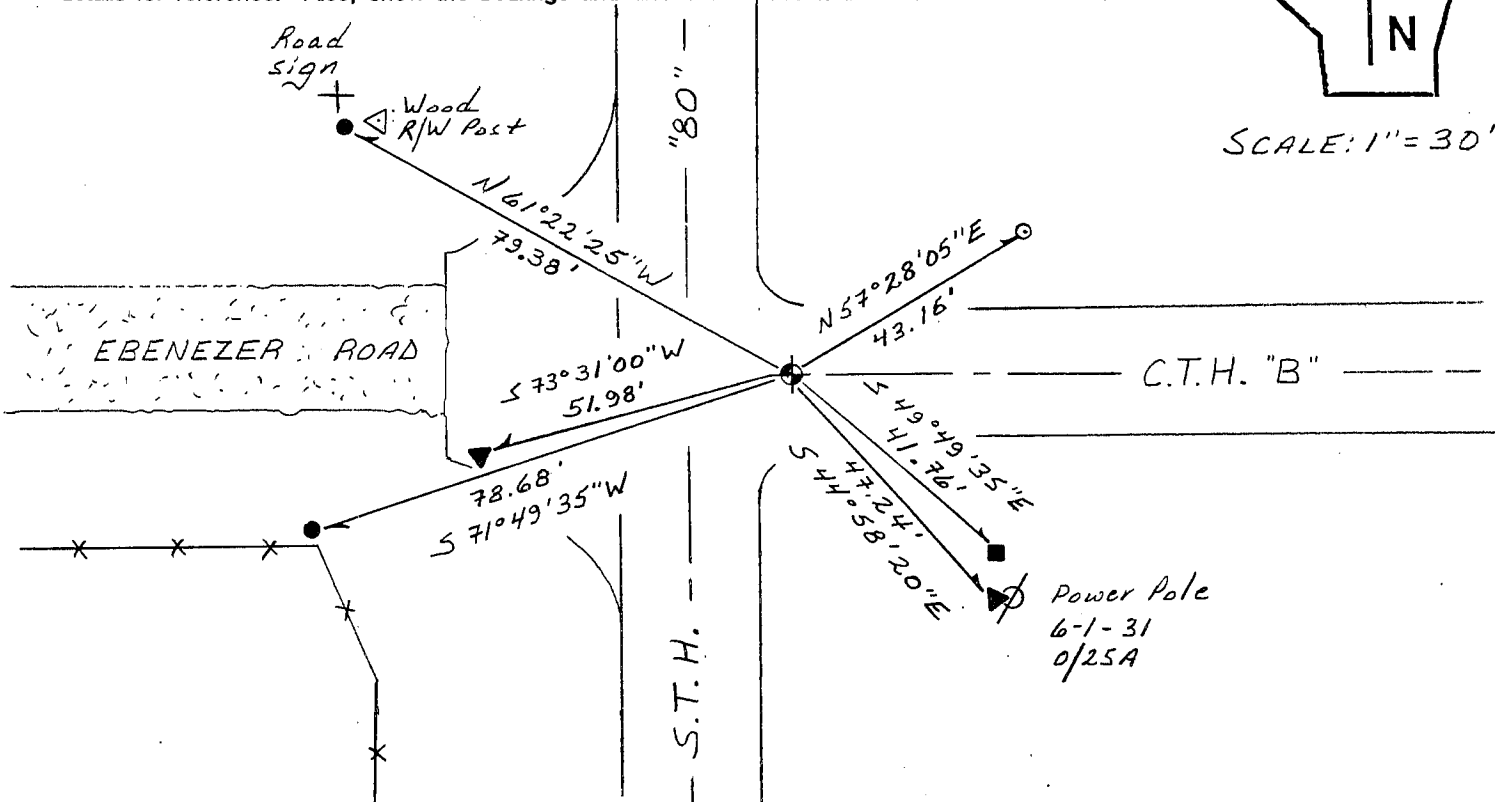
County Name <u>Iowa</u>		Name of Township / City / Village (Circle One) <u>Eden</u>	
Surveyor Name <u>Bowden Surveying, Ltd.</u>			
Address, City, State, Zip Code <u>619 W. Merrimac Street, Dodgeville, WI 53533</u>			
X (Easting) <u>299448.69'</u>	Y (Northing) <u>150483.23'</u>	Latitude	Longitude
Project ID <u>5035-00-01</u>		Coordinate ID <u>6-1-114</u>	

HORIZONTAL DATUM		UNITS	COORDINATE SYSTEM
<input type="checkbox"/> NAD 27	<input checked="" type="checkbox"/> English	<input type="checkbox"/> Geodetic	
<input checked="" type="checkbox"/> NAD 83 (91)	<input type="checkbox"/> Metric	<input type="checkbox"/> State Plane _____ Zone	
		<input checked="" type="checkbox"/> County <u>Iowa</u>	

Location Diagram, showing corner identification name, bearing and distance references to at least four witness monuments, fence or occupational lines, centerlines of roads, and other site details for reference. Also, show the bearings and distances between the witness monuments.



SCALE: 1" = 30'



Indicate fd. = found or pl. = placed in the diagram above  
 Bearings used in the location sketch and basis for monument location are Iowa C&G Coordinates.  
 Monumentation Legend / Description of Corner and Witness Monuments:

- Aluminum monument - found
- 3/4" dia. iron pipe - found
- ground rod - found
- railroad spike - found
- #5 (5/8" dia.) x 24" rebar - set

If applicable, show any discrepancy between the location of the corner as restored or re-established and the location of that corner as previously restored or re-established by bearing and distance. Also, show the bearings and distances between the previous corner and at least two of the witness monuments. See reverse.

Basis for Monument Location

1. Describe any record evidence, monument evidence, occupational evidence or any other material evidence including traverse measurements that you considered, and whether the monument was found or placed. Explain below, be specific, and attach a separate sheet if necessary.
2. Was the corner.
  - a) found perpetuated,
  - b) restored through acceptance of obliterated evidence,
  - c) relocated by witness testimony, or
  - d) accepted as a remonumented corner of record and maintained with additional monumentation?
3. Was the corner re-established through lost corner proportionate methods? If so, show the method, including the directions and distances to other public land survey corners used as evidence or used in determining the corner location.

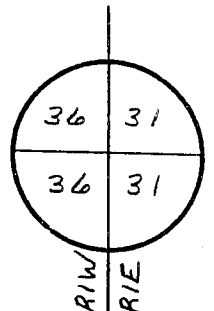
Please Type or Print

1. Original government survey. John M. Halverson set a railroad spike and prepared a tie sheet for Grant County dated 5/2/1986. I found and accepted an aluminum monument at Halverson's location.

2. d)

3. N/A

T. 6 N.-R. 1 E.  
4th Principal Meridian  
Corner 114



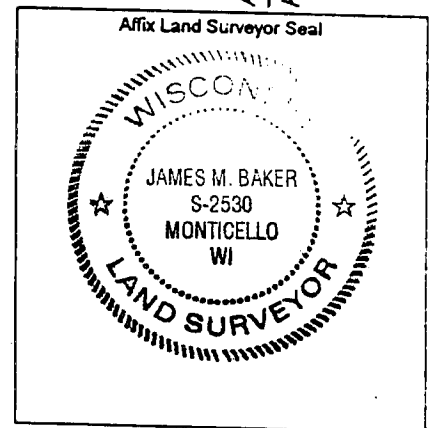
Certification I, James M. Baker

(type or print name) certify that the corner location shown on this record was determined by me or under my direction and control and that this U.S. Public Land Survey Monument Record is correct and complete to the best of my knowledge and belief, in accordance with Chapter A-E 7.08 of the Wisconsin Administrative Code.

Section Control Data Sheets have been filed in the County Surveyor's office, showing final measurements by direction and distance between all remonumented corners. Section Control Information is referenced by the following:

Date	Project ID	Sheet(s)

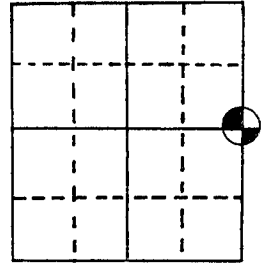
X James M. Baker, RLS-2530 4/18/2005  
(Registered Land Surveyor Signature and Number) (Date)



# U.S. PUBLIC LAND SURVEY MONUMENT RECORD

Note: This form is intended and designed to fulfill all requirements of Wisconsin Administrative Code, Chapter A-E 5.02, U.S. Public Land Survey Monument Record (3) (a) (b) (c) (d) (e) (f) (g) (h) (i). An additional sheet may be added if necessary to conform with said requirements.

(a) Corner location: Township 6 North  
 Range 1 ~~East~~ West  
 Town/~~City/Village~~ Wingville  
 County Grant



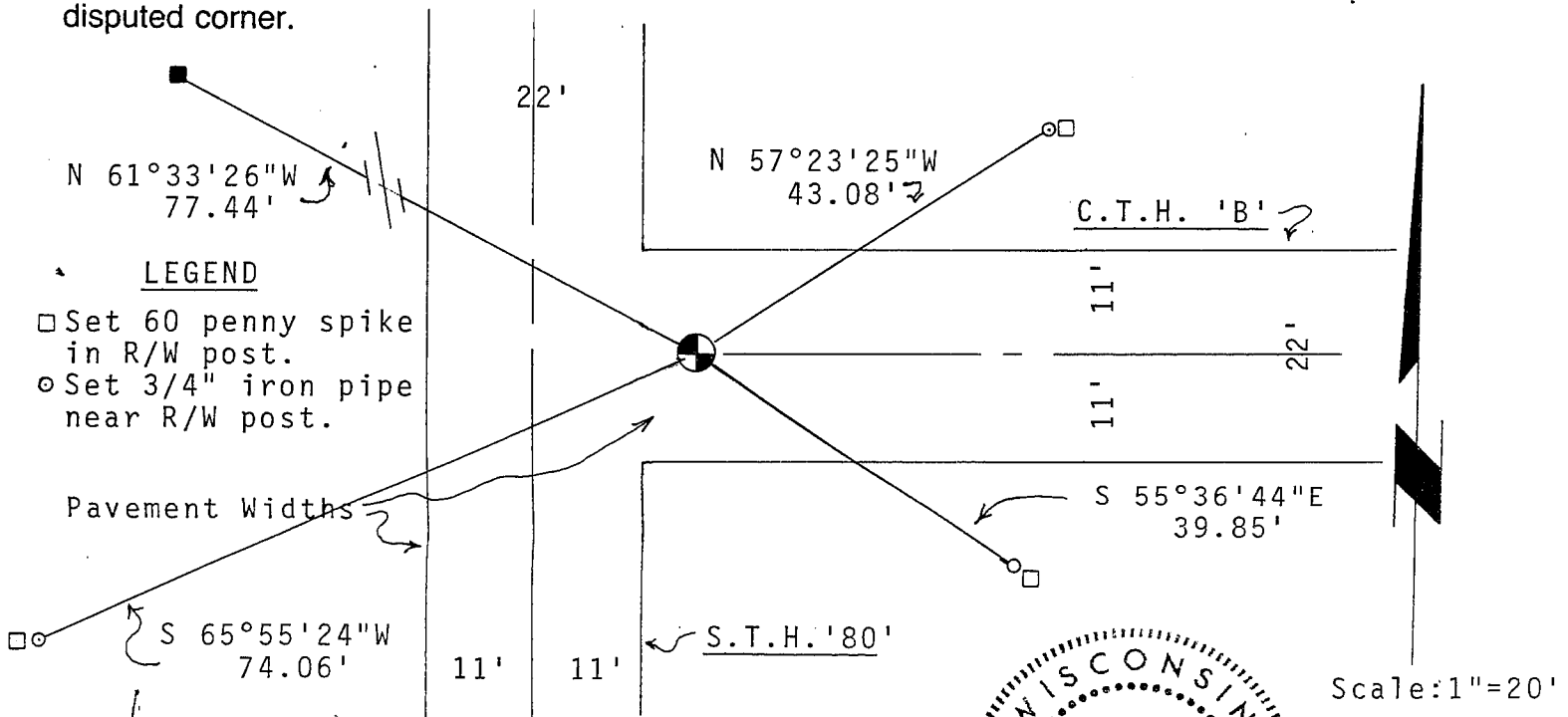
Section 36

(b) (f) (g) (h) Description of monument found at this corner and if it was accepted, state all evidence (material, testimonial, occupational, plats, records, other monuments) used as a basis for accepting. If not accepted or if nothing was found, state evidence used as basis for establishing location. If reestablished through lost corner proportionate methods, indicate all monuments, distances and directions used to establish.

$\frac{1}{4}$

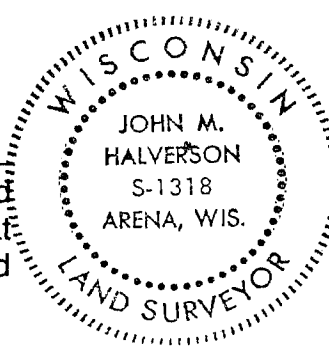
No evidence of Section Corner found as shown on S.T.H. '80' plans. Project No. T0510 (1)&(2). Set R/R spike 17 feet east of centerline.

(c) (d) (e) Plan view of corner with ties to at least 4 witness monuments. If in disagreement with previously established corner, show the distances between the two corners and also indicate the ties to the disputed corner.



(i) I, John M. Halverson

(type or print name) certify that the corner location on this record was determined by me or under my direction and control and that this U.S. Public Land Survey Monument Record is correct and complete to the best of my knowledge and belief.



Affix seal here

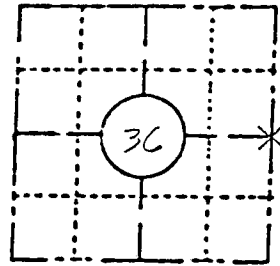
John M. Halverson Signature 5/2/86 Date

120

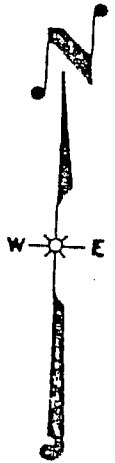
FIELD SURVEY NOTES  
**PRESERVATION OF LANDMARKS**  
 (Pursuant to Section 59.635(7) Wisconsin Statutes)

Highway Commission of Wisconsin  
 Form E-D-707-65

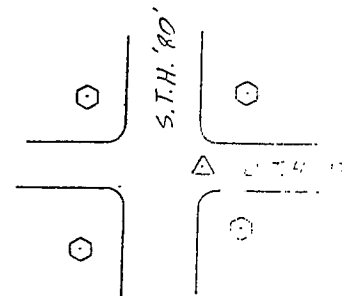
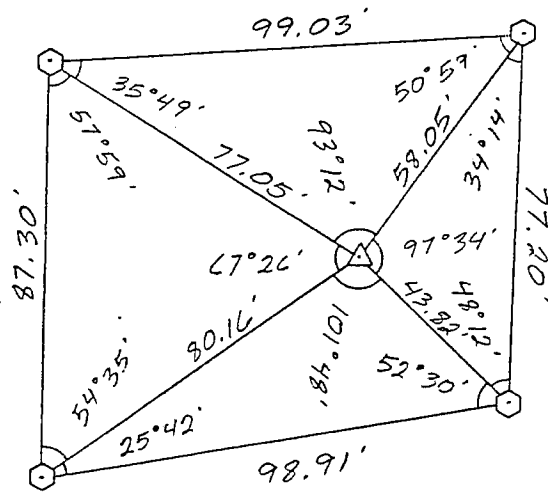
COUNTY GRANT		
TOWN WINGVILLE		
HIGHWAY S.T.H. '80' @ C.T.H. 'B'		
SECTION 36	TOWNSHIP TCN	RANGE R1W
TYPE OF LANDMARK SECTION CORNER MONUMENT		



LOCATION SKETCH  
 (Location of landmark indicated by "x")



This space for copy of field notes or ties to the above described landmarks



5035-00-71, 5996-02-11 &  
 0022-74-00  
 Platteville - Montfort Road  
 Water Street, City of Platteville  
 Structures B-22-7, 15  
 STH 80, Grant & Iowa Counties  
 Payne & Dolan, Inc.

SCALE  
 1" = 40'

- ) = REFERENCE MONUMENT
- ] = RIGHT OF WAY POST
- ) = WITNESS POST
- Δ = SECTION CORNER LOCATION

COUNTY CLERK'S OFFICE	
COUNTY OF	WISCONSIN 55
DATE RECEIVED FOR RECORD	DATE COPY SENT TO COUNTY SURVEYOR
SIGNATURE OF COUNTY CLERK	