

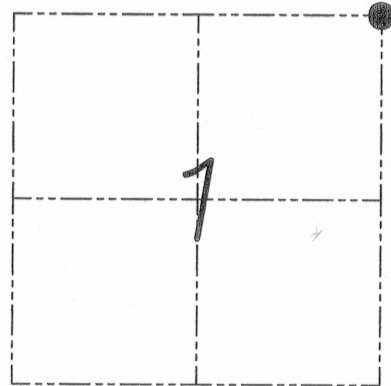
U.S. PUBLIC LAND SURVEY MONUMENT RECORD

Section 1, Town 5 North Range 1 West, Town of Clifton, Grant County, Wisconsin

CERTIFICATE

I, Larry L. Austin, do hereby certify that the corner location on this record was determined by me and/or under my direct supervision and that this U.S. public land survey monument record is correct and complete to the best of my knowledge and belief.

Larry L. Austin
Larry L. Austin, S-1903



● = CORNER LOCATION

HISTORY OF CORNER

Corner was originally set in 1832 by Lyon. In 1986 Halverson set a railroad spike at this location. No other record of the corner was found.

CORNER EVIDENCE FOUND

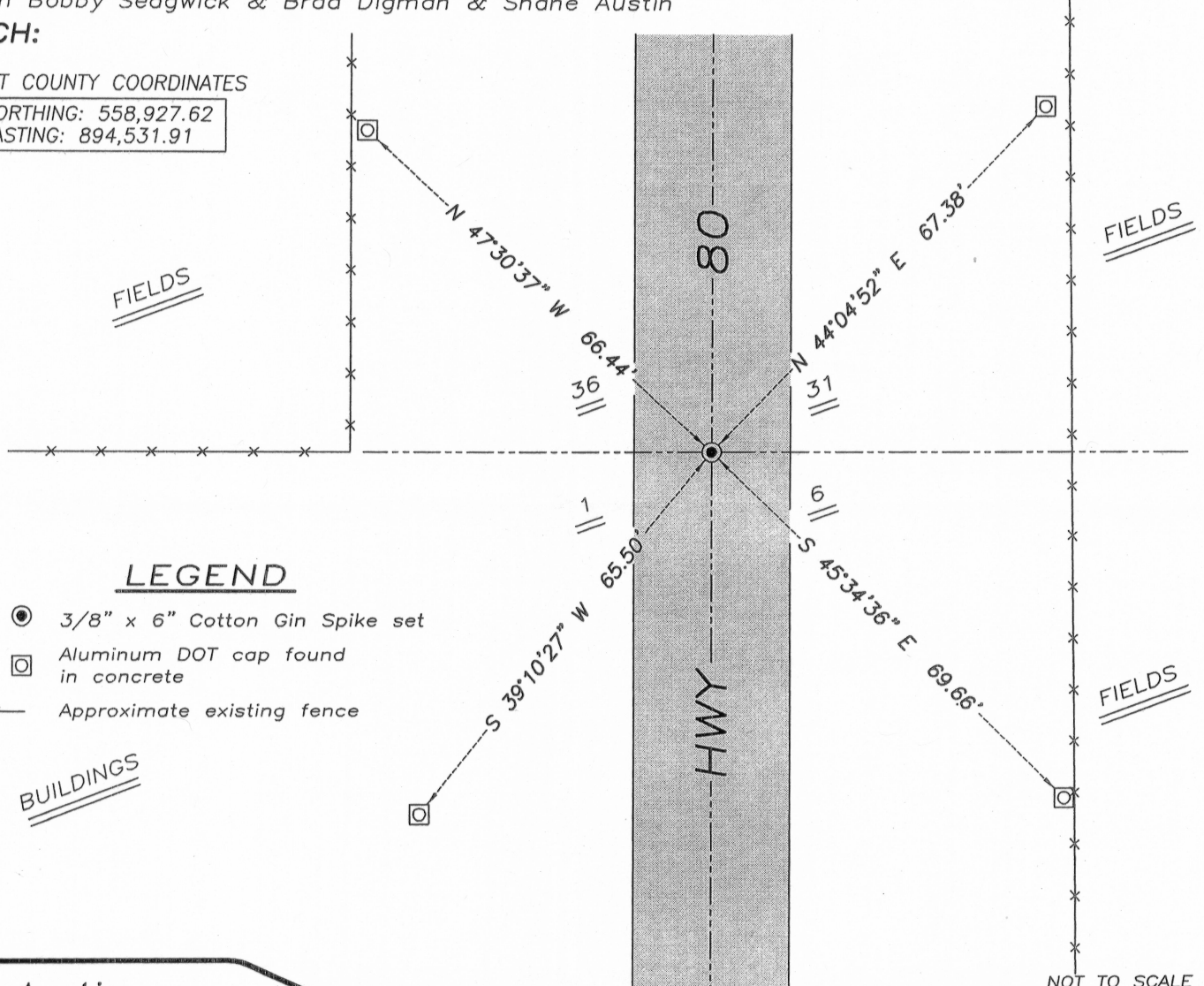
I found the existing railroad spike prior to road construction. I reset the corner and set new ties as shown below. Verified this location using EDM & GPS methods.

DESCRIPTION OF CORNER AND WITNESS MONUMENTS, references and accessories used to perpetuate the original or re-established location of this corner. Witnesses to monument location Bobby Sedgwick & Brad Digman & Shane Austin

SKETCH:

GRANT COUNTY COORDINATES

NORTHING: 558,927.62
EASTING: 894,531.91



LEGEND

- 3/8" x 6" Cotton Gin Spike set
- ◻ Aluminum DOT cap found in concrete
- x- Approximate existing fence

NOT TO SCALE



Austin Engineering LLC

4211 HWY 81 E, LANCASTER, WI 53813
PHONE 608-723-6363 FAX 608-723-6702

JOB NUMBER 08S249-WIDOT
FIELDBOOK: TDSR, 2810-B
G:\GRANTDOT\T6NR1W
H:\TIE\T5NR1W\01

DRAWN BY: SW AUSTIN
APPROVED: LL AUSTIN

01

JUN 28 2010

Basis for Monument Location

1. Describe any record evidence, monument evidence, occupational evidence or any other material evidence including traverse measurements that you considered, and whether the monument was found or placed. Explain below, be specific, and attach a separate sheet if necessary.
2. Was the corner:
 - a) found perpetuated,
 - b) restored through acceptance of obliterated evidence,
 - c) relocated by witness testimony, or
 - d) accepted as a remonumented corner of record and maintained with additional monumentation?
3. Was the corner re-established through lost corner proportionate methods? If so, show the method, including the directions and distances to other public land survey corners used as evidence or used in determining the corner location.

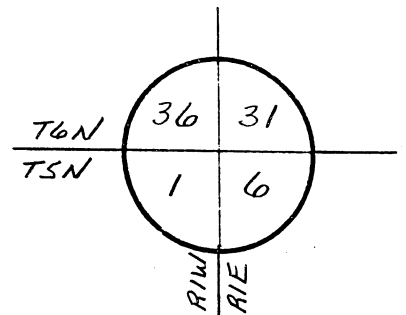
Please Type or Print

1. Original government survey. James D. Adams noted a mound at the corner in a survey in Section 6 dated June, 1865. John M. Halverson set a railroad spike and prepared a tie sheet for Grant County dated 5/2/1986. I found and accepted an aluminum monument at Halverson's location. This location matches railroad plan dimensions to existing evidence of the railroad.

2. d)

3. N/A

T. 6 N. - R. 1 E.
 4th Principal Meridian
 Corner 133

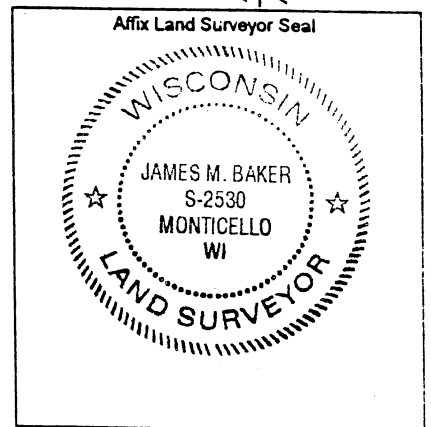


Certification James M. Baker

I, James M. Baker (type or print name) certify that the corner location shown on this record was determined by me or under my direction and control and that this U.S. Public Land Survey Monument Record is correct and complete to the best of my knowledge and belief, in accordance with Chapter A-E 7.08 of the Wisconsin Administrative Code.

Section Control Data Sheets have been filed in the County Surveyor's office, showing final measurements by direction and distance between all remonumented corners. Section Control Information is referenced by the following:

Date	Project ID	Sheet(s)



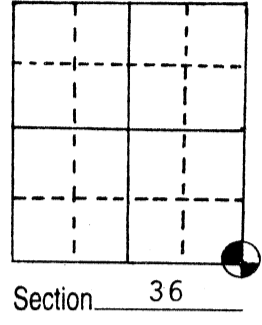
X James M. Baker, S-2530
 (Registered Land Surveyor Signature and Number)

4/18/2005
 (Date)

U.S. PUBLIC LAND SURVEY MONUMENT RECORD

Note: This form is intended and designed to fulfill all requirements of Wisconsin Administrative Code, Chapter A-E 5.02, U.S. Public Land Survey Monument Record (3) (a) (b) (c) (d) (e) (f) (g) (h) (i). An additional sheet may be added if necessary to conform with said requirements.

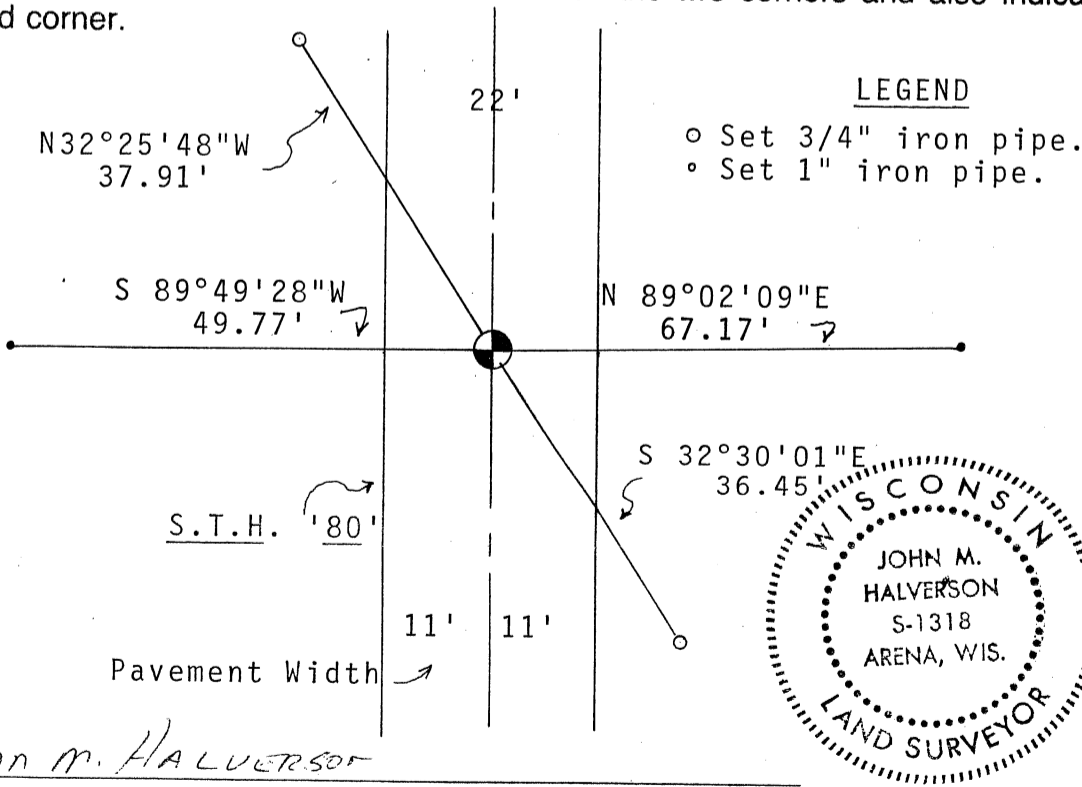
(a) Corner location: Township 6 North
 Range 1 ~~West~~ West
 Town/ ~~Wingville~~ Wingville
 County Grant



(b) (f) (g) (h) Description of monument found at this corner and if it was accepted, state all evidence (material, testimonial, occupational, plats, records, other monuments) used as a basis for accepting. If not accepted or if nothing was found, state evidence used as basis for establishing location. If reestablished through lost corner proportionate methods, indicate all monuments, distances and directions used to establish.

No evidence of Section Corner found as shown on project plan for S.T.H. '80'. Project No. T0510 (1)&(2). Set R/R spike in centerline.

(c) (d) (e) Plan view of corner with ties to at least 4 witness monuments. If in disagreement with previously established corner, show the distances between the two corners and also indicate the ties to the disputed corner.



(i) I, John M. HALVERSON
 (type or print name) certify that the corner location on this record was determined by me or under my direction and control and that this U.S. Public Land Survey Monument Record is correct and complete to the best of my knowledge and belief.

John M. Halverson
 Signature Date 5/2/86

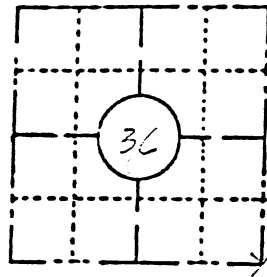
Scale: 1" = 20'
 Affix seal here

121

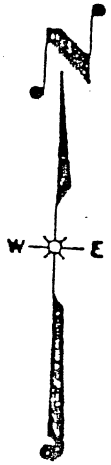
FIELD SURVEY NOTES
PRESERVATION OF LANDMARKS
 (Pursuant to Section 59.635(7) Wisconsin Statutes)

Wisconsin Highway Commission of Wisconsin
 Form E-11-707-65

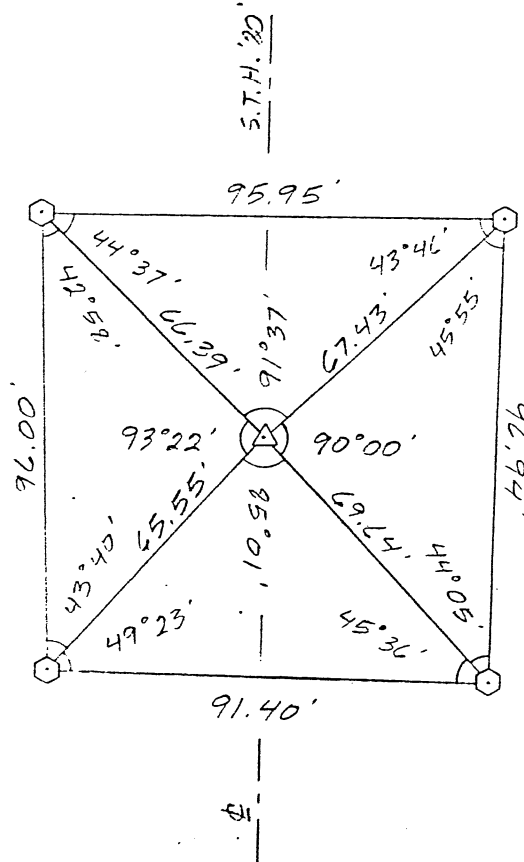
COUNTY GRANT		
TOWN WINGVILLE		
HIGHWAY S.T.H. '90'		
SECTION 36	TOWNSHIP T 6 N	RANGE R 1 W
TYPE OF LANDMARK SECTION CORNER MONUMENT		



LOCATION SKETCH
 (Location of landmark indicated by "x")



This space for copy of field notes or ties to the above described landmarks



5033-00-71, 5033-00-11
 0022-74-00
 Flatville - Monticello
 Water Street, City
 Structures B-22-7
 GTH 80, Grant & Dolan, Inc.

SCALE
 1" = 40'

- = REFERENCE MONUMENT
- ⌈ = RIGHT OF WAY POST
- ⌋ = WITNESS POST
- ⊙ = SECTION CORNER LOCATION

COUNTY CLERK'S OFFICE	
COUNTY OF	WISCONSIN } 55
DATE RECEIVED FOR RECORD	DATE COPY SENT TO COUNTY SURVEYOR
SIGNATURE OF COUNTY CLERK	