

GRANT COUNTY CERTIFIED LAND CORNER

CORNER NUMBER 124

CERTIFICATE:

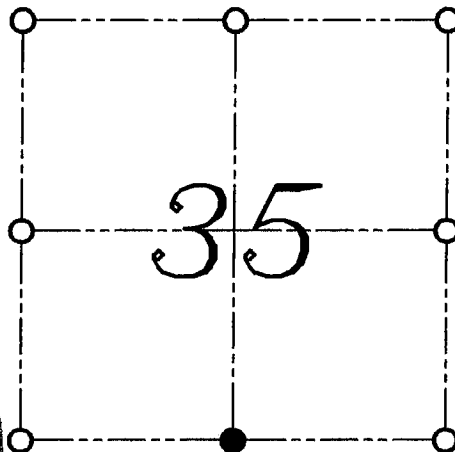
I, LARRY L. AUSTIN, DO HEREBY CERTIFY THAT ON 25th DAY OF OCTOBER, 1999, I FOUND NO EVIDENCE OF THE SOUTH 1/4 CORNER OF SECTION 35, TOWN 6 NORTH, RANGE 1 WEST, OF THE FOURTH PRINCIPAL MERIDIAN, AND I RE-ESTABLISHED SAID CORNER ACCORDING TO THE WISCONSIN STATUTES AS SHOWN AND DESCRIBED HEREON.

DATED THIS 29th DAY OF OCTOBER, 1999

Larry L. Austin
LARRY L. AUSTIN S-1903



SEAL



● = CORNER LOCATION

SOUTH 1/4 CORNER OF
SECTION 35, T 6 N R 1 W
TOWN OF WINGVILLE

HISTORY OF ORIGINAL CORNER ESTABLISHMENT:

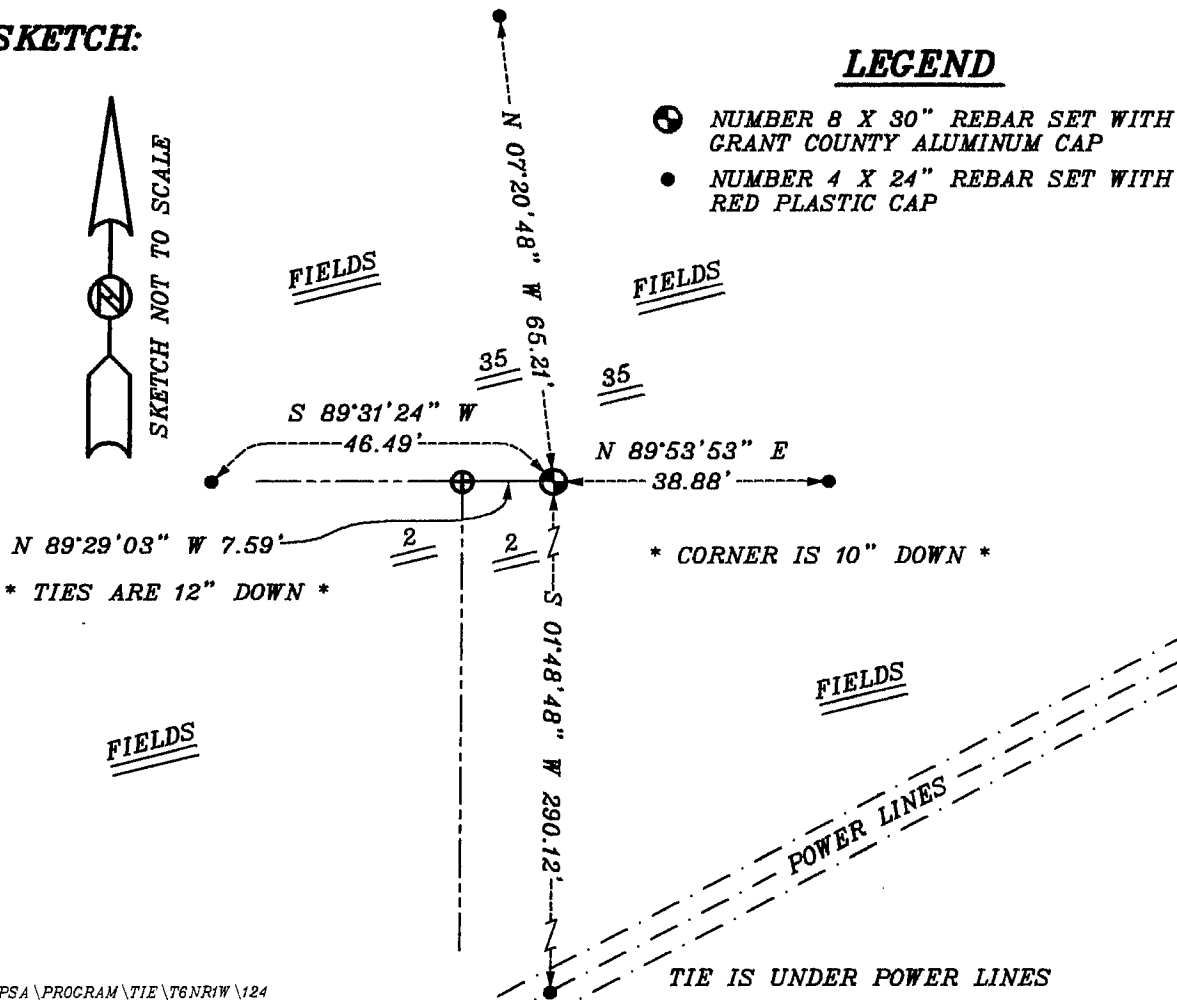
CORNER WAS SET IN 1832 BY SIBLEY.
NO OTHER RECORD OF THE CORNER WAS FOUND.

DESCRIPTION OF CORNER EVIDENCE FOUND:

I FOUND NO EVIDENCE OF THE CORNER LOCATION. I SET THE CORNER MIDWAY ONLINE BETWEEN THE SOUTHWEST AND SOUTHEAST CORNERS OF SECTION 35. VERIFIED THIS LOCATION USING E.D.M. AND G.P.S. METHODS.

DESCRIPTION OF CORNER AND WITNESS MONUMENTS, REFERENCES AND ACCESSORIES USED TO PERPETUATE THE ORIGINAL OR RE-ESTABLISHED LOCATION OF THIS CORNER:
WITNESS TO THE CORNER LOCATION: BOBBY SEDGWICK ; SHELBY BLINDERT

SKETCH:



GRANT COUNTY CERTIFIED LAND CORNER

CERTIFICATE:

I, LARRY L. AUSTIN, DO HEREBY CERTIFY THAT ON 25th DAY OF OCTOBER, 1999, I FOUND NO EVIDENCE OF THE NORTH 1/4 CORNER OF SECTION 2, TOWN 5 NORTH, RANGE 1 WEST, OF THE FOURTH PRINCIPAL MERIDIAN, AND I RE-ESTABLISHED SAID CORNER ACCORDING TO THE WISCONSIN STATUTES AS SHOWN AND DESCRIBED HEREON.

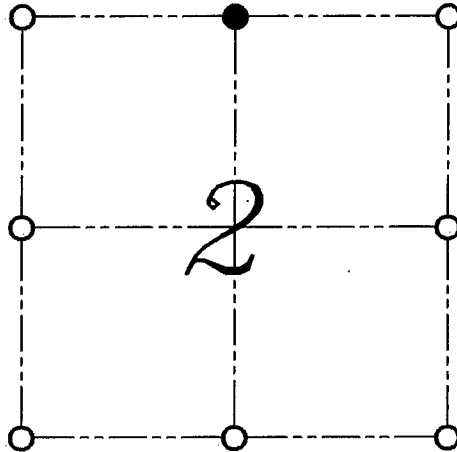
DATED THIS 29th DAY OF OCTOBER, 1999

Larry L. Austin
LARRY L. AUSTIN S-1903



SEAL

CORNER NUMBER 04



● = CORNER LOCATION
NORTH 1/4 CORNER OF
SECTION 2, T 5 N R 1 W
TOWN OF CLIFTON

HISTORY OF ORIGINAL CORNER ESTABLISHMENT:

CORNER WAS NEVER ORIGINALLY SET.

DESCRIPTION OF CORNER EVIDENCE FOUND:

I SET THE CORNER AT THE PROPORTIONED OFFSET.
THE CORNER WAS ALSO SET ONLINE BETWEEN THE SOUTH
1/4 CORNER AND THE SOUTHWEST CORNER OF SECTION 35, T6N R1W.
VERIFIED THIS LOCATION USING E.D.M. AND G.P.S. METHODS.

**DESCRIPTION OF CORNER AND WITNESS MONUMENTS, REFERENCES AND ACCESSORIES
USED TO PERPETUATE THE ORIGINAL OR RE-ESTABLISHED LOCATION OF THIS CORNER:**
WITNESS TO THE CORNER LOCATION: BOBBY SEDGWICK ; SHELBY BLINDERT

SKETCH:

LEGEND

- ⊕ NUMBER 8 X 30" REBAR SET WITH GRANT COUNTY ALUMINUM CAP
- NUMBER 4 X 24" REBAR SET WITH RED PLASTIC CAP
- ⊕ GRANT COUNTY ALUMINUM MONUMENT FOUND

