

GRANT COUNTY CERTIFIED LAND CORNER

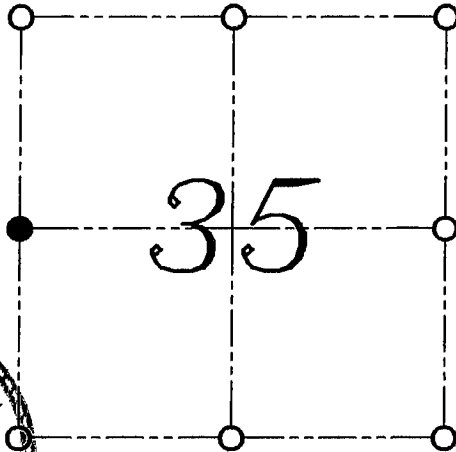
CORNER NUMBER 118

CERTIFICATE:

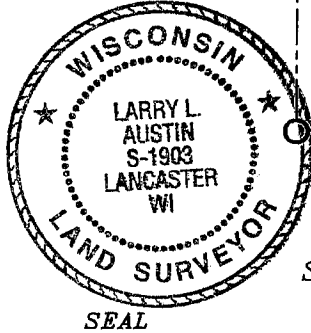
I, LARRY L. AUSTIN, DO HEREBY CERTIFY THAT ON 29th DAY OF OCTOBER, 1999, I FOUND EVIDENCE OF THE WEST 1/4 CORNER OF SECTION 35, TOWN 6 NORTH, RANGE 1 WEST, OF THE FOURTH PRINCIPAL MERIDIAN, AND I RE-ESTABLISHED SAID CORNER ACCORDING TO THE WISCONSIN STATUTES AS SHOWN AND DESCRIBED HEREON.

DATED THIS 29th DAY OF OCTOBER, 1999

Larry L. Austin
LARRY L. AUSTIN S-1903



● = CORNER LOCATION
WEST 1/4 CORNER OF
SECTION 35, T 6 N R 1 W
TOWN OF WINGVILLE



SEAL

HISTORY OF ORIGINAL CORNER ESTABLISHMENT:

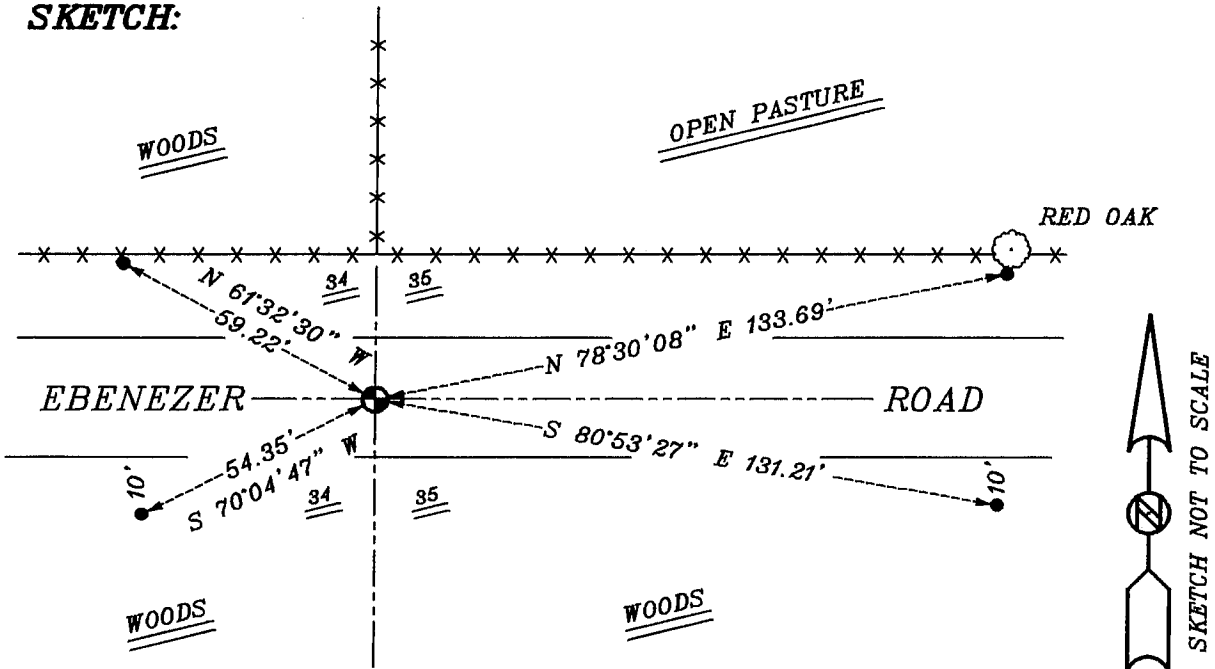
CORNER WAS SET IN 1833 BY SIBLEY. IN 1858 JOHN EVERETT FOUND THE ORIGINAL CORNER. IN 1877 JOEL BARBER FOUND ANCIENT CORNER AND REMAINS OF BEARING TREES.

DESCRIPTION OF CORNER EVIDENCE FOUND:

I FOUND AN EXISTING ROAD EAST-WEST AND A FENCE NORTH. I ACCEPTED THIS LOCATION AFTER AN E.D.M. AND G.P.S. TRAVERSE OF THE AREA.

DESCRIPTION OF CORNER AND WITNESS MONUMENTS, REFERENCES AND ACCESSORIES USED TO PERPETUATE THE ORIGINAL OR RE-ESTABLISHED LOCATION OF THIS CORNER:
WITNESS TO THE CORNER LOCATION: BOBBY SEDGWICK ; SHELBY BLINDERT

SKETCH:



LEGEND

- NUMBER 8 X 30" REBAR SET WITH GRANT COUNTY ALUMINUM CAP
- NUMBER 4 X 24" REBAR SET WITH RED PLASTIC CAP
- *—*— EXISTING FENCE LOCATION