

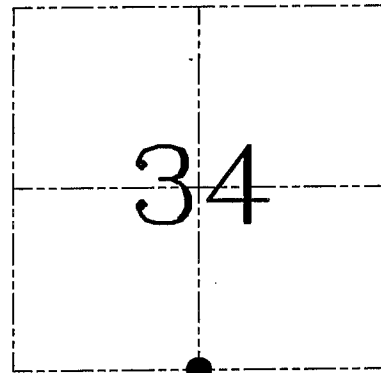
U.S. PUBLIC LAND SURVEY MONUMENT RECORD – GRANT COUNTY, WI
Section 34, Town 6 North Range 1 West, Town of Wingville

CERTIFICATE

I, Larry L. Austin, do hereby certify that the corner location on this record was determined by me and/or under my direct supervision and that this U.S. public land survey monument record is correct and complete to the best of my knowledge and belief.

Dated this 13th day of March, 2004

Larry L. Austin
 Larry L. Austin S-1903



● = CORNER LOCATION

HISTORY OF CORNER ESTABLISHMENT

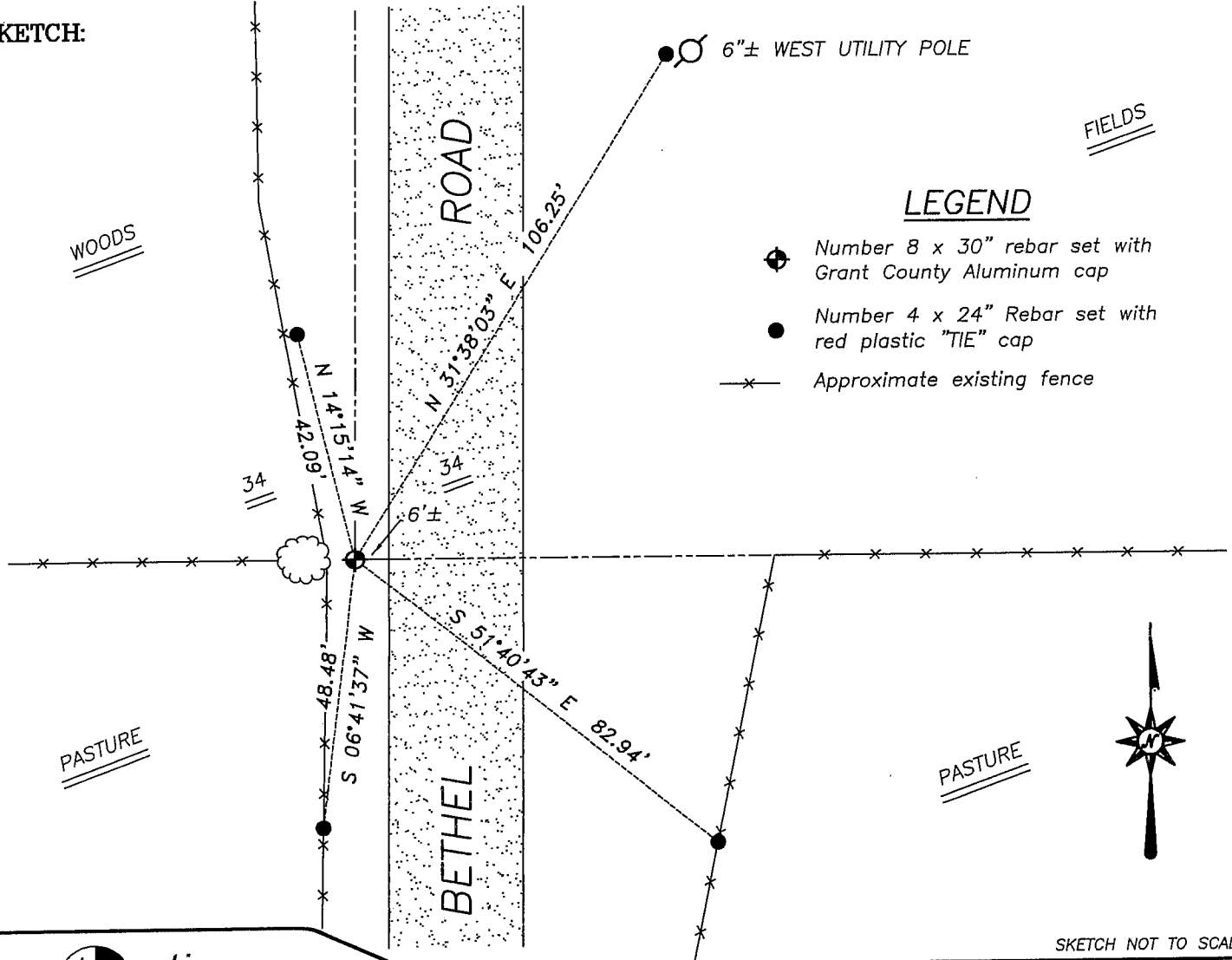
Corner was originally set in 1832 by Sibley. Everett tied to the corner in 1858. In 1877 Barber tied to the corner and found old bearings to the corner. No other record of the corner was found.

DESCRIPTION OF CORNER EVIDENCE FOUND

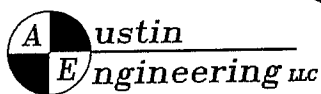
I found no evidence to the location of the original corner. I reset the corner based on an existing East-West fence for Northing. Easting was established based on proportioning between the monumented Southeast corner and occupied Southwest corner. Verified this location using EDM & GPS methods.

DESCRIPTION OF CORNER AND WITNESS MONUMENTS, references and accessories used to perpetuate the original or re-established location of this corner. Witnesses to corner location Bobby Sedgwick & Shane Austin & Cody Austin

SKETCH:



SKETCH NOT TO SCALE



4211 HWY 81 E, LANCASTER, WI 53813
 PHONE 608-723-6363 FAX 608-723-6702

FIELDBOOK: TSDR, 2000, 2326
 G:\T6NR1W\35
 H:\TIE\T6NR1W\126

DRAWN BY: SW AUSTIN
 APPROVED: LL AUSTIN

U.S. PUBLIC LAND SURVEY MONUMENT RECORD

(As Required By s. A-E 7.08, WI Adm. Code)

History of original corner establishment and subsequent restorations and description of any record, monument, occupational, testimonial or other evidence considered: *The last survey record I found of this corner was in Book B on page 4 from 1846. I found a record for the S 1/4 of 34, T6N, R1W and computed the corner at the record proportional offset using occupation near the Northwest corner of the section flow line. This location was further verified by information obtained from other surveyors of measurements to other corners west along the town line.*

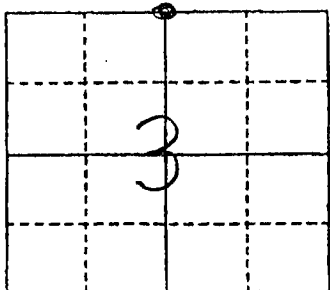
Corner was: (Check All That Apply)

- Restored through acceptance of an obliterated evidence location
- Restored through acceptance of a found perpetuated location
- Considered a lost corner and reestablished through lost corner proportionate methods (include a plan view drawing showing distances and directions to other Public Land Survey Corners used for proportioning and determining the corner location)
- Restored or reestablished in a location that differs from a previous restoration or reestablishment (include a plan view drawing and indicate what was set and/or found)

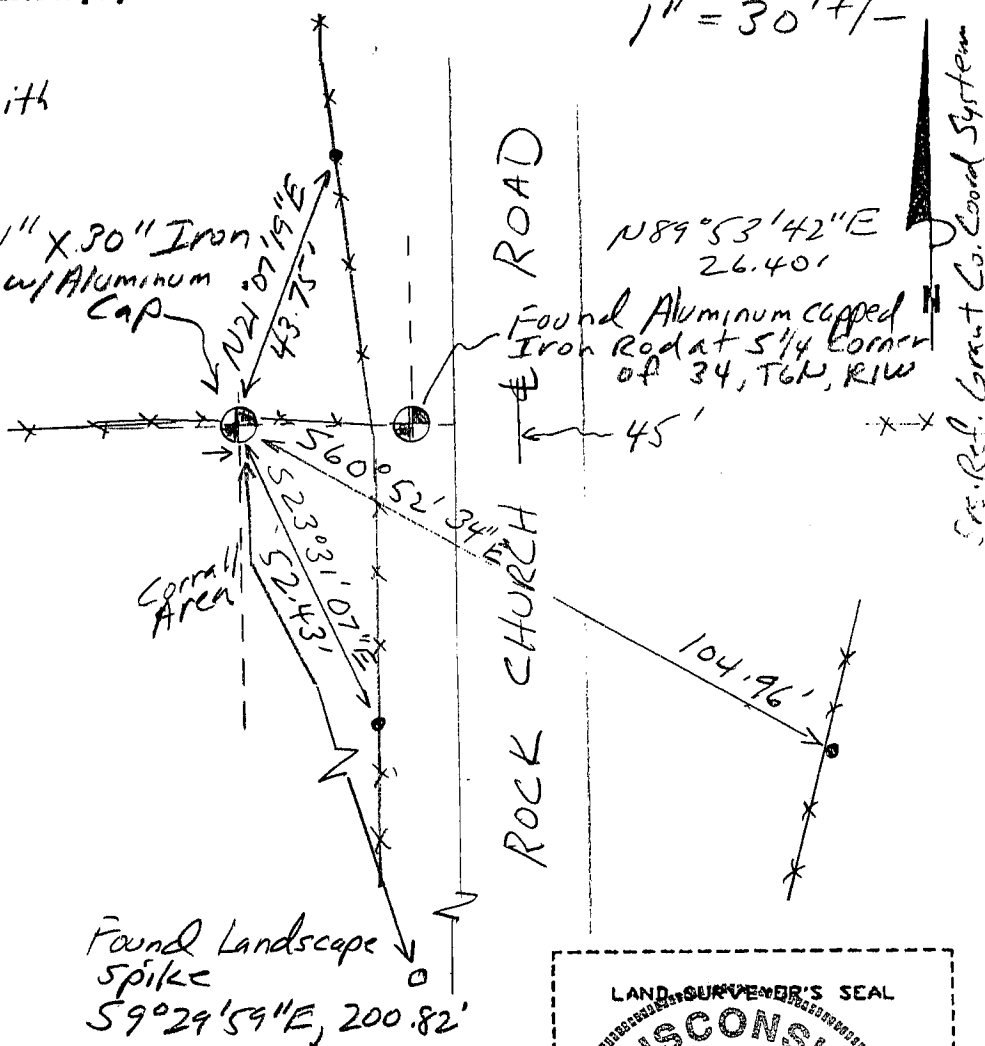
Describe the monument and accessories used to perpetuate the location of this corner. (Include a plan view drawing and indicate what was set and/or found)

- Legend
- Found 1/2" Iron Rod with red plastic cap
 - Fence

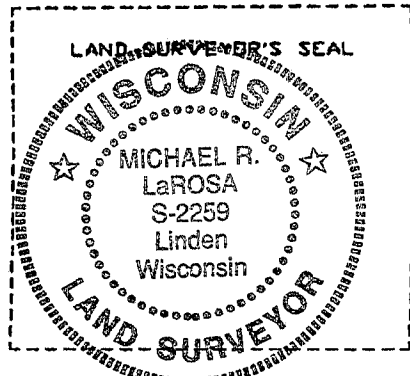
The N 1/4
 corner of Section 3
 T. S N., R. 1W,
Grant County, Wisconsin
 Job ID: 2004-13
 Book # 7



● = Location of Corner



Michael R. LaRose
 Type or print name) certify that the corner location shown on this record was determined by me or under my direction and control and that this U.S. Public Land Survey Monument Record is correct and complete to the best of my knowledge and belief.
Michael R. LaRose 4/10/04
 Signature Date



Index No. 6

558944.87
 881276.78 email