

GRANT COUNTY CERTIFIED LAND CORNER

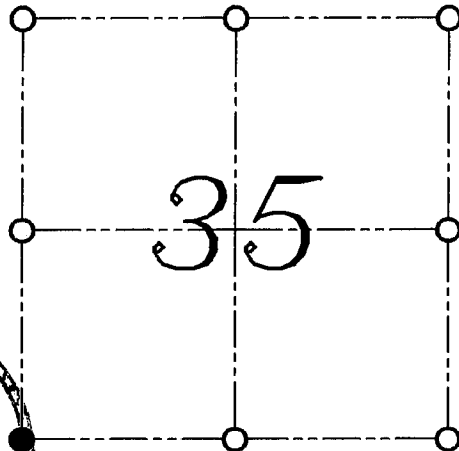
CORNER NUMBER 125

CERTIFICATE:

I, LARRY L. AUSTIN, DO HEREBY CERTIFY THAT ON 25th DAY OF OCTOBER, 1999, I FOUND EVIDENCE OF THE SOUTHWEST CORNER OF SECTION 35, TOWN 6 NORTH, RANGE 1 WEST, OF THE FOURTH PRINCIPAL MERIDIAN, AND I RE-ESTABLISHED SAID CORNER ACCORDING TO THE WISCONSIN STATUTES AS SHOWN AND DESCRIBED HEREON.

DATED THIS 29th DAY OF OCTOBER, 1999

Larry L. Austin
LARRY L. AUSTIN S-1903



● = CORNER LOCATION

SOUTHWEST CORNER OF SECTION 35, T 6 N R 1 W TOWN OF WINGVILLE



SEAL

HISTORY OF ORIGINAL CORNER ESTABLISHMENT:

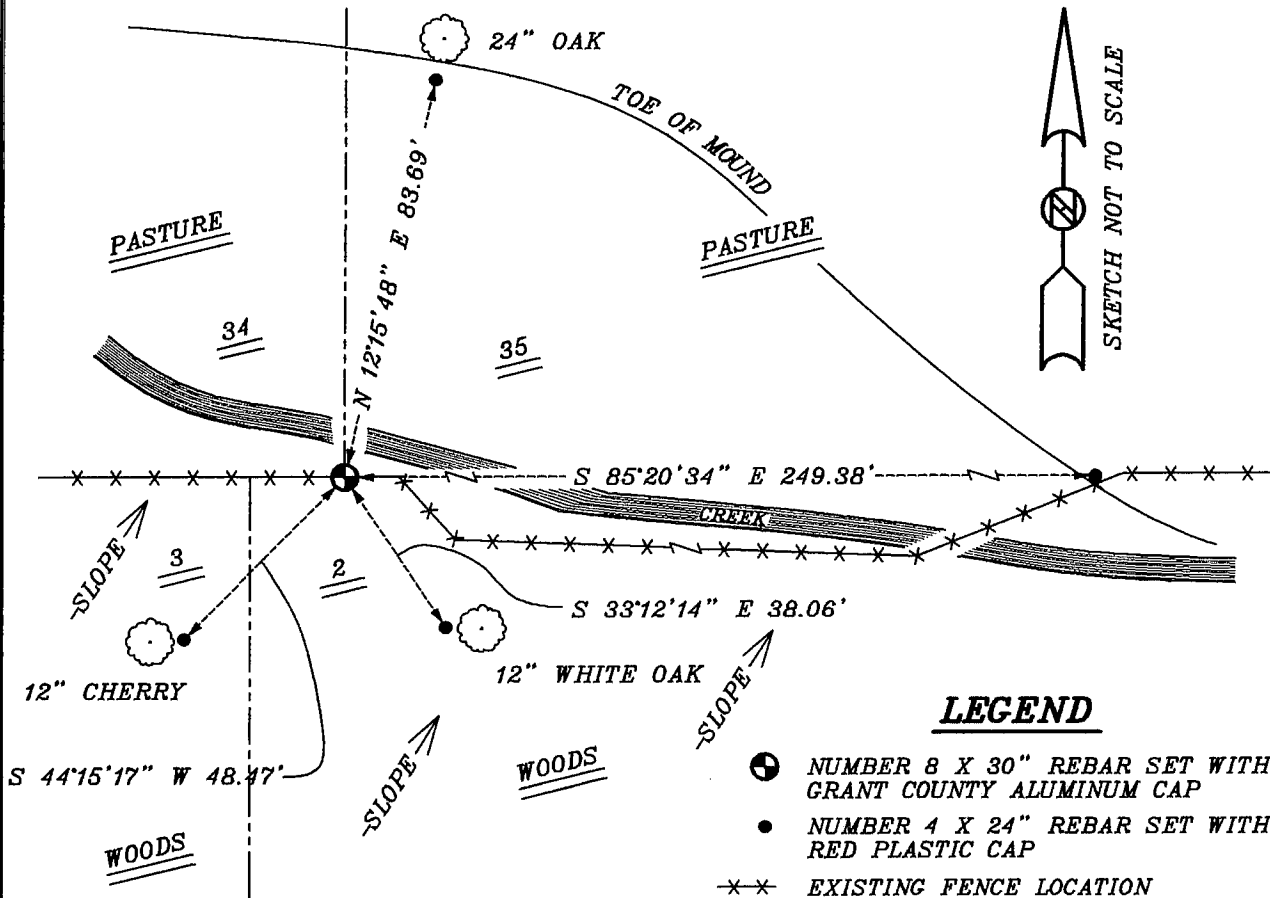
CORNER WAS SET IN 1832 BY SIBLEY.
IN 1858 JOHN EVERETT FOUND THE ORIGINAL CORNER.

DESCRIPTION OF CORNER EVIDENCE FOUND:

I FOUND AN OCCUPIED EAST-WEST FENCE. I HELD THIS LOCATION FOR NORTHING. EASTING WAS SET BY PROPORTIONATE METHODS. VERIFIED THIS LOCATION USING E.D.M. AND G.P.S. METHODS.

DESCRIPTION OF CORNER AND WITNESS MONUMENTS, REFERENCES AND ACCESSORIES USED TO PERPETUATE THE ORIGINAL OR RE-ESTABLISHED LOCATION OF THIS CORNER:
WITNESS TO THE CORNER LOCATION: BOBBY SEDGWICK ; SHELBY BLINDERT

SKETCH:



LEGEND

- NUMBER 8 X 30" REBAR SET WITH GRANT COUNTY ALUMINUM CAP
- NUMBER 4 X 24" REBAR SET WITH RED PLASTIC CAP
- ×× EXISTING FENCE LOCATION