

U. S. PUBLIC LAND SURVEY MONUMENT RECORD

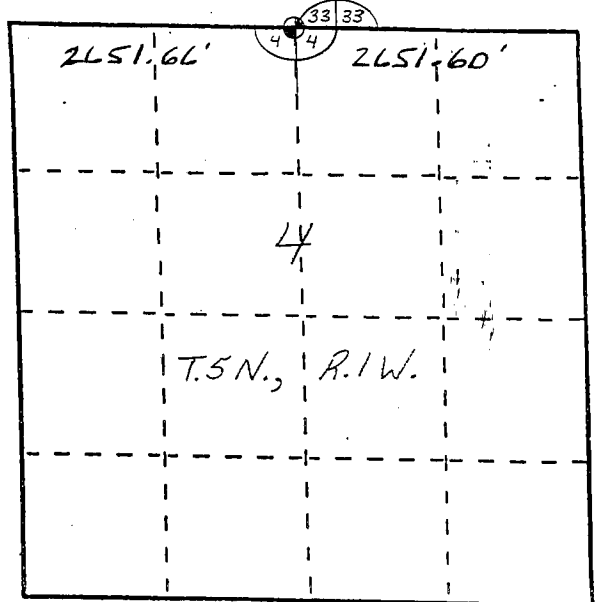
INSTRUCTIONS: This record shall show the location of the corner and shall include all of the following nine elements (a through i).

(a) Identify the corner by reference to the U.S. public land survey system.

○ = Corner monument restored.

The North Quarter Corner
of Section 4, Town 5 North,
Range 1 West, Clifton Township,
Grant County, Wisconsin.

NORTH 558,957.65'
EAST 875,970.62'
GRANT COUNTY COORDINATES
WGS 1984 (91)

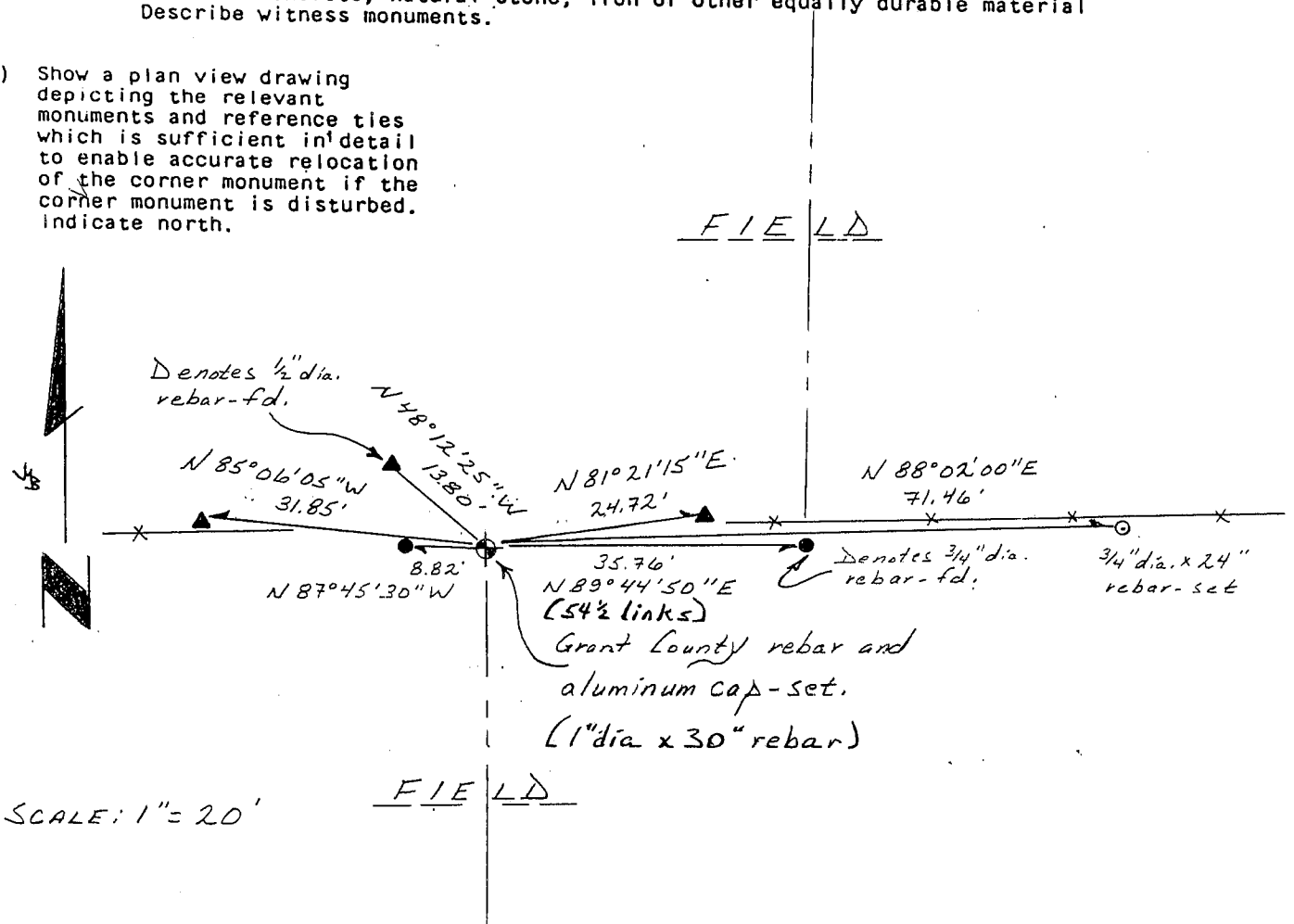


(b) Describe any record evidence, monument evidence, occupational evidence, testimonial evidence or any other material evidence you considered, and whether the monument was found or placed.

COULD FIND NO EVIDENCE OF GOULD'S STONE FROM 1889, AN EARTHMOVER CLEANED OUT THE LAST FENCE. MONUMENT WAS SET HALFWAY BETWEEN THE NORTHEAST AND NORTHWEST SECTION CORNERS. THIS LOCATION MATCHES THE RECORDED AVERAGE OFFSET TO THOMAS BUCK'S SOUTH 1/4 CORNER OF SECTION 33.

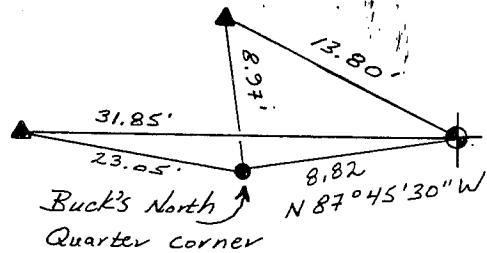
(c) In the plan view drawing below, provide reference ties to at least 4 witness monuments, or, if the location is within a municipality, to at least 2 witness monuments. (Witness monuments shall be made of concrete, natural stone, iron or other equally durable material. Describe witness monuments.)

(d) Show a plan view drawing depicting the relevant monuments and reference ties which is sufficient in detail to enable accurate relocation of the corner monument if the corner monument is disturbed. Indicate north.



- (e) Describe any material discrepancy between the location of the corner as restored or reestablished and the location of that corner as previously restored or reestablished by distance and direction. Show the discrepancy on the plan view drawing under (d), above. Show the distances between the corner as previously restored or reestablished and (1) the corner as restored or reestablished, and (2) to at least 2 of the witness monuments shown on the drawing in (d), above.

Thomas Buck set a 3/4" dia. rebar (tie sheet dated 8/24/1998).

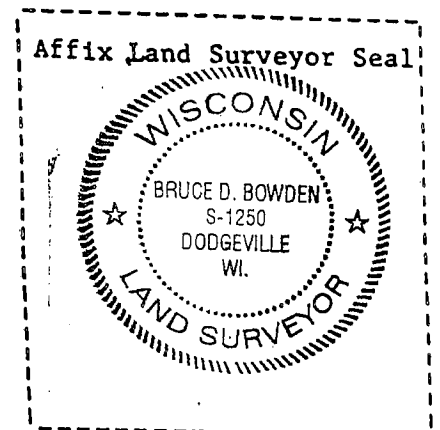


- (f) Was the corner restored through acceptance of (1) an obliterated evidence location, or, (2) a found perpetuated location?

(2) A FOUND PERPETUATED LOCATION

- (g&h) Was the corner reestablished through lost corner proportionate methods? If so, show the method, including the directions and distances to other public land survey corners used as evidence or used for proportioning in determining the corner location?

No.



(1) Bruce D. Bowden

(type or print name) certified that the corner location shown on this record was determined by me or under my direction and control and that this U.S. Public Land Survey Monument Record is correct and complete to the best of my knowledge and belief.

Signature

Date

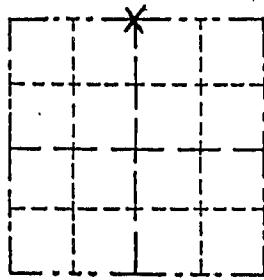
Bruce D. Bowden Oct 7, 2004

REC'D AUG 26 1998

Survey Monument Record

TYPE OF MONUMENT 3/4" x 24" Iron Rod
STATE PLANE COORDINATES: N _____
E _____
ELEVATION — M.S.L. DATUM: _____
THETA ANGLE: _____
FIELD BOOK: _____
PAGE _____

CORNER NO. _____
SECTION 4
TOWN 5 NORTH
RANGE 1 WEST



BASIS FOR MONUMENT LOCATION

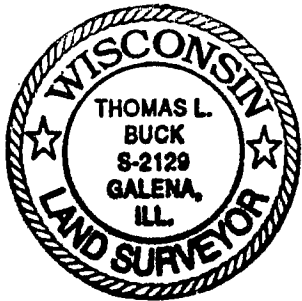
(Use reverse side if necessary)

Show info such as: History of corner, with reference to Vol. and pg., dates, surveyor; exact description of monument replaced; if location computed, by taped or EDM traverse; landowner, remarks, etc.

LOCATION
(Indicated by "X")

- FOUND PERPETUATED LOCATION
- OBLITERATED EVIDENCE LOCATION
- LOST CORNER (RESTORED BY PROPORTIONATE METHODS)

I FOUND NO EVIDENCE AT THIS CORNER AND NO HISTORY SINCE THE ORIGINAL GOVERNMENT SURVEY. I SET THIS MONUMENT BY USING PROPORTIONATE MEASUREMENTS FROM AN E.D.M. TRAVERSE OF SECTIONS 4 & 9 AND G.P.S. OBSERVATIONS. IT FITS WELL WITH OCCUPATION WITHIN SECTION 4.



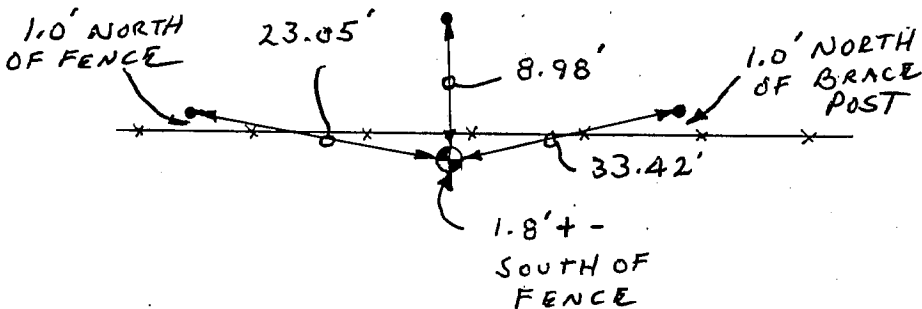
CERTIFIED CORRECT TO THE BEST OF MY KNOWLEDGE AND BELIEF

Thomas L. Buck
Registered Land Surveyor

DATE: 8/24/98

TIE SKETCH

Show at least three (3) ties and monument



NO SCALE

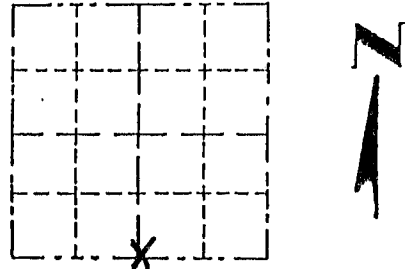
LEGEND

- = 3/4" x 24" Iron Rod
- = 1/2" Iron Rod
- = EXISTING FENCE

Survey Monument Record

CORNER NO. _____
 SECTION 33
 TOWN 6 NORTH
 RANGE 1 WEST

TYPE OF MONUMENT 3/4" X 24" Iron Rod
 STATE PLANE COORDINATES: N _____
 E _____
 ELEVATION — M.S.L. DATUM: _____
 THETA ANGLE: _____
 FIELD BOOK: _____
 PAGE _____



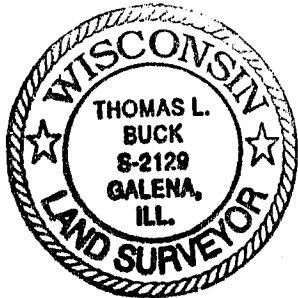
LOCATION
 (Indicated by "X")
 FOUND PERPETUATED LOCATION
 OBLITERATED EVIDENCE LOCATION
 LOST CORNER (RESTORED BY PROPORTIONATE METHODS)

BASIS FOR MONUMENT LOCATION

(Use reverse side if necessary)

Show info such as: History of corner, with reference to Vol. and pg., dates, surveyor; exact description of monument replaced; if location computed, by taped or EDM traverse; landowner, remarks, etc.

I FOUND NO HISTORY OF THIS CORNER SINCE THE ORIGINAL GOVERNMENT SURVEY. I HAD ESTABLISHED THE NORTH 1/4 CORNER OF SECTION 4, T6N, R1W & THE NORTH LINE OF THE NE 1/4 OF SEC. 4 IN A PREVIOUS SURVEY. I HELD THAT LINE AND USED THE OFFSET BETWEEN THE N 1/4 CORNER OF SEC. 4 & THE S 1/4 CORNER OF SEC. 33.



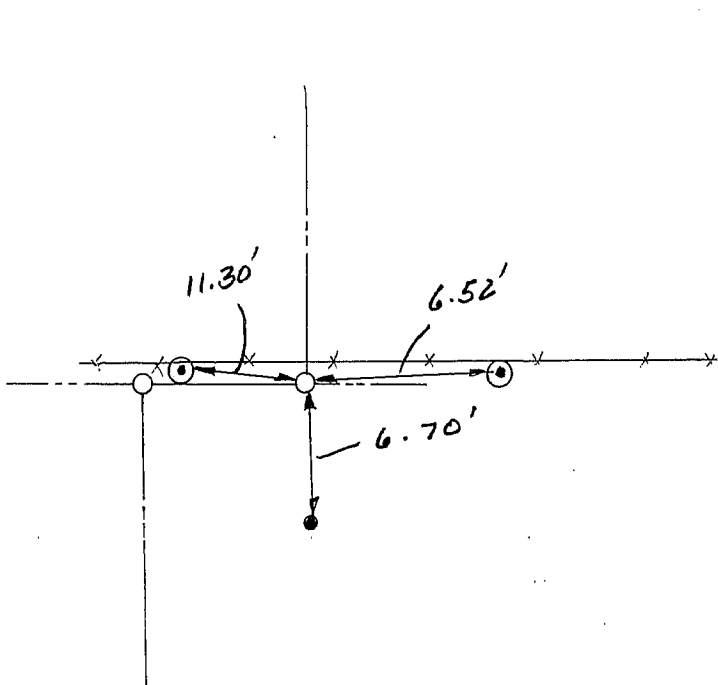
CERTIFIED CORRECT TO THE BEST OF MY KNOWLEDGE AND BELIEF

Thomas L. Buck
 Registered Land Surveyor

DATE: 7/30/99

TIE SKETCH

Show at least three (3) ties and monument



NO SCALE

- ⊙ = P.K. W/SHINER TOP OF POST
- = 3/4" X 24" IRON ROD
- = 1/2" IRON ROD
- *—*— = EXISTING FENCE