

Survey Monument Record

CORNER NO. \_\_\_\_\_

SECTION 32

TOWN 6 NORTH

RANGE 1 WEST

TYPE OF MONUMENT 3/4" X 24" IRON ROD

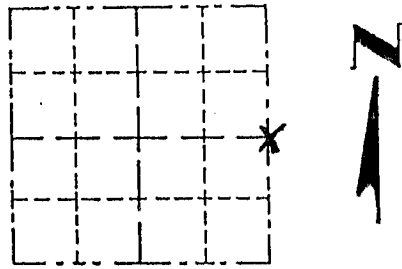
STATE PLANE COORDINATES: N \_\_\_\_\_  
E \_\_\_\_\_

ELEVATION — M.S.L. DATUM: \_\_\_\_\_

THETA ANGLE: \_\_\_\_\_

FIELD BOOK: \_\_\_\_\_

PAGE \_\_\_\_\_



LOCATION  
(Indicated by "X")

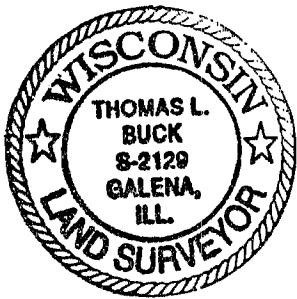
- FOUND PERPETUATED LOCATION
- OBLITERATED EVIDENCE LOCATION
- LOST CORNER (RESTORED BY PROPORTIONATE METHODS)

BASIS FOR MONUMENT LOCATION

(Use reverse side if necessary)

Show info such as: History of corner, with reference to Vol. and pg., dates, surveyor; exact description of monument replaced; if location computed, by taped or EDM traverse; landowner, remarks, etc.

I FOUND NO HISTORY OF THIS CORNER SINCE THE ORIGINAL GOVERNMENT SURVEY. I SET THIS CORNER BY USING EXISTING PHYSICAL EVIDENCE AND PROPORTIONATE MEASUREMENTS FROM AN EDM TRAVERSE AND LOCATION SURVEY OF SECTIONS 32 AND 33.



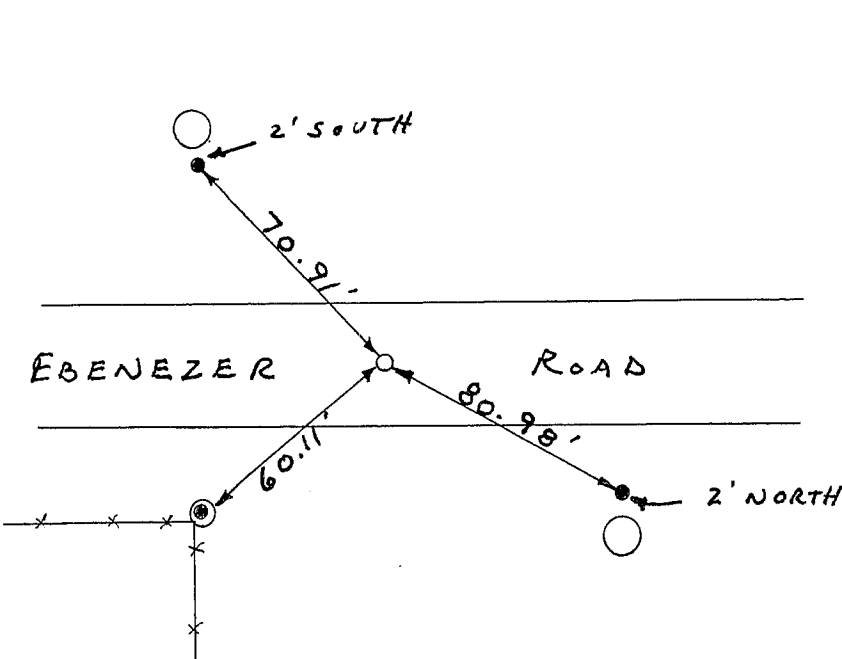
CERTIFIED CORRECT TO THE BEST OF MY KNOWLEDGE AND BELIEF

Thomas Buck  
Registered Land Surveyor

DATE: 7/30/99

TIE SKETCH

Show at least three (3) ties and monument



- = EXISTING POWER POLE
- = P.K. WITH SHINER ON TOP OF POST
- = 3/4" X 24" IRON ROD
- = 1/2" IRON ROD
- \*-\*-\* = EXISTING FENCE