

U. S. PUBLIC LAND SURVEY MONUMENT RECORD

INSTRUCTIONS: This record shall show the location of the corner and shall include all of the following nine elements (a through i).

(a) Identify the corner by reference to the U.S. public land survey system.

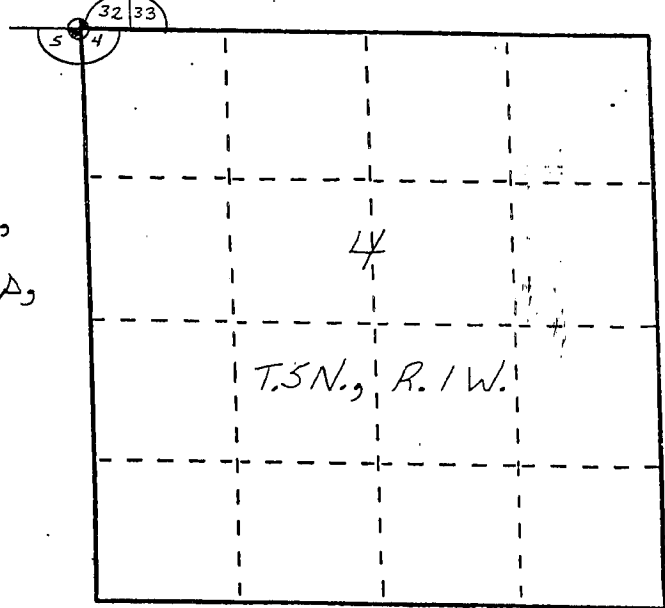
○ = Corner monument restored.

The Northwest Corner of Section 4, Town 5 North, Range 1 West, Clifton Township, Grant County, Wisconsin.

NORTH 558,946.16

EAST 873,318.98

GRANT COUNTY COORDINATES
WGS 1984 (91)



(b) Describe any record evidence, monument evidence, occupational evidence, testimonial evidence or any other material evidence you considered, and whether the monument was found or placed.

MONUMENT WAS SET AT THE RECORD GOVERNMENT OFFSET FROM THE SOUTHWEST CORNER OF SECTION 33. THIS LOCATION MAKES NEARLY A STRAIGHT LINE ON THE WEST SIDE OF SECTION 4.

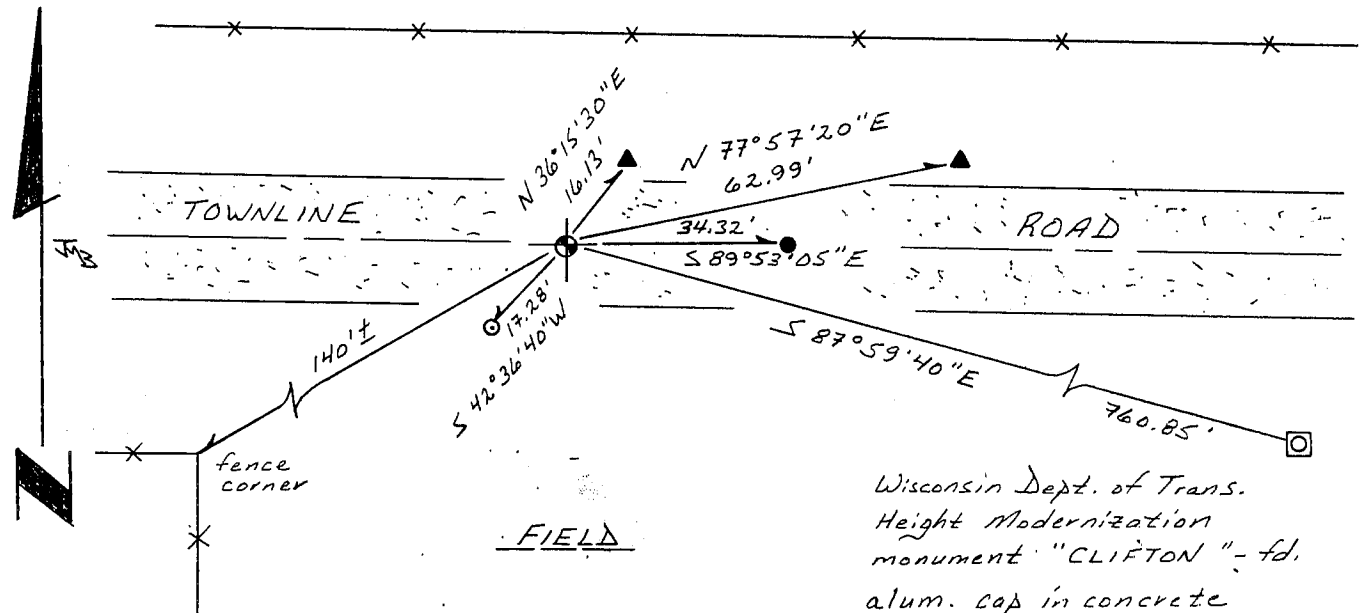
(c) In the plan view drawing below, provide reference ties to at least 4 witness monuments, or, if the location is within a municipality, to at least 2 witness monuments. (Witness monuments shall be made of concrete, natural stone, iron or other equally durable material) Describe witness monuments.

(d) Show a plan view drawing depicting the relevant monuments and reference ties which is sufficient in detail to enable accurate relocation of the corner monument if the corner monument is disturbed. Indicate north.

LEGEND

- ⊕ Grant County rebar and aluminum cap - set
- ▲ 1/2" dia. rebar - fd.
- nail - fd. (Buck's SE of Sec. 32)
- #6 (3/4" dia.) x 24" rebar - set

FIELD



Wisconsin Dept. of Trans.
Height Modernization
monument "CLIFTON" - fd.
alum. cap in concrete

SCALE: 1" = 30'

(e) Describe any material discrepancy between the location of the corner as restored or reestablished and the location of that corner as previously restored or reestablished by distance and direction. Show the discrepancy on the plan view drawing under (d), above. Show the distances between the corner as previously restored or reestablished and (1) the corner as restored or reestablished, and (2) to at least 2 of the witness monuments shown on the drawing in (d), above.

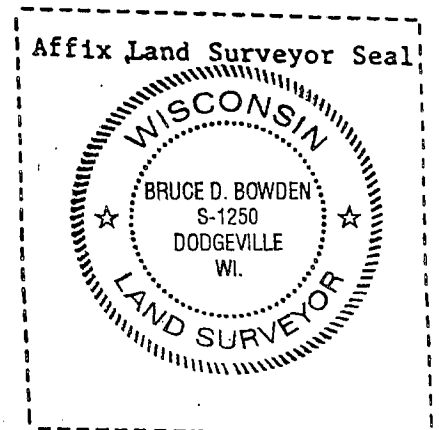
None.

(f) Was the corner restored through acceptance of (1) an obliterated evidence location, or, (2) a found perpetuated location?

A found perpetuated location.

(g&h) Was the corner reestablished through lost corner proportionate methods? If so, show the method, including the directions and distances to other public land survey corners used as evidence or used for proportioning in determining the corner location?

No.



(1) *Bruce D. Bowden*

(type or print name) certify that the corner location shown on this record was determined by me or under my direction and control and that this U.S. Public Land Survey Monument Record is correct and complete to the best of my knowledge and belief.

Bruce D. Bowden
Signature

Oct 7, 2004
Date

Survey Monument Record

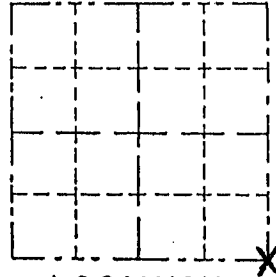
TYPE OF MONUMENT 3/4" X 24" Iron Rod
 STATE PLANE COORDINATES: N _____
 E _____
 ELEVATION — M.S.L. DATUM: _____
 THETA ANGLE: _____
 FIELD BOOK: _____
 PAGE _____

CORNER NO. _____
 SECTION 32
 TOWN 6 NORTH
 RANGE 1 WEST

BASIS FOR MONUMENT LOCATION

(Use reverse side if necessary)

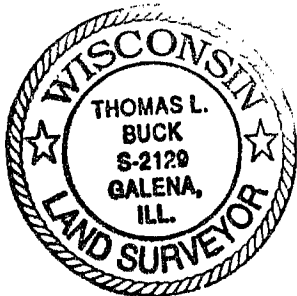
Show info such as: History of corner, with reference to Vol. and pg., dates, surveyor; exact description of monument replaced; if location computed, by taped or EDM traverse; landowner, remarks, etc.



LOCATION
 (Indicated by "X")

- FOUND PERPETUATED LOCATION
- OBLITERATED EVIDENCE LOCATION
- LOST CORNER (RESTORED BY PROPORTIONATE METHODS)

I FOUND NO HISTORY OF THIS CORNER SINCE THE ORIGINAL GOVERNMENT SURVEY. I SET THIS CORNER BY USING THE PROPORTIONATE METHOD AFTER AN E.D.M. TRAVERSE AND LOCATION SURVEY OF SECTIONS 32 + 33



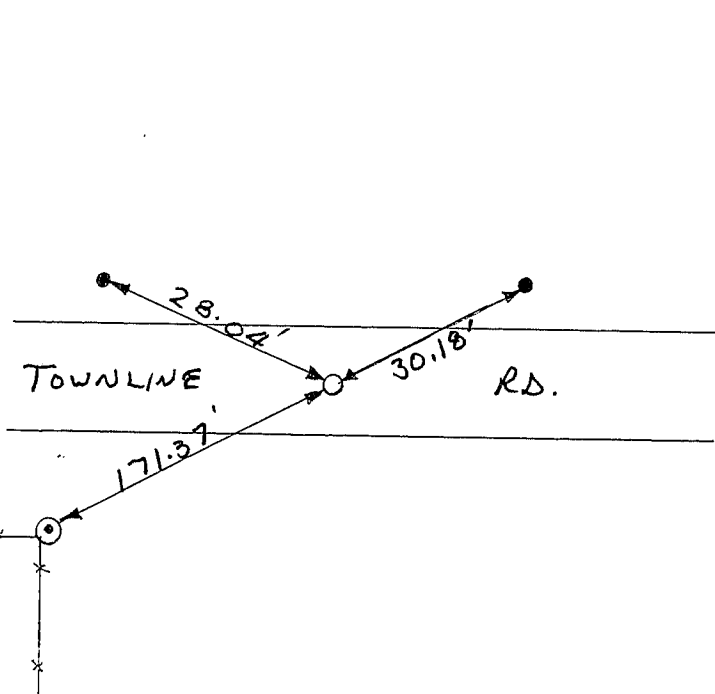
CERTIFIED CORRECT TO THE BEST OF MY KNOWLEDGE AND BELIEF

Thomas Buck
 Registered Land Surveyor

DATE: 7/30/99

TIE SKETCH

Show at least three (3) ties and monument



NO SCALE

- = 3/4" X 24" Iron Rod
- ⊙ = P.K. w/SHINER TOP OF POST
- = 1/2" Iron Rod
- x-x- = EXISTING FENCE