

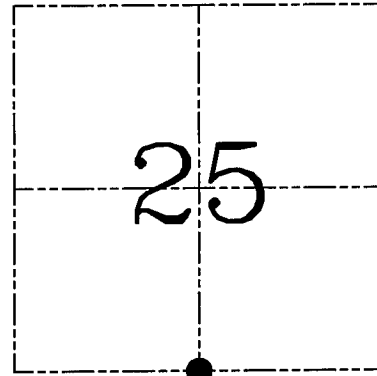
**U.S. PUBLIC LAND SURVEY MONUMENT RECORD – GRANT COUNTY, WI**  
**Section 25, Town 6 North Range 1 West, Town of Wingville**

CERTIFICATE

I, Larry L. Austin, do hereby certify that the corner location on this record was determined by me and/or under my direct supervision and that this U.S. public land survey monument record is correct and complete to the best of my knowledge and belief.

Dated this 9th day of November, 2004

*Larry L. Austin*  
 Larry L. Austin S-1903



● = CORNER LOCATION

HISTORY OF CORNER ESTABLISHMENT

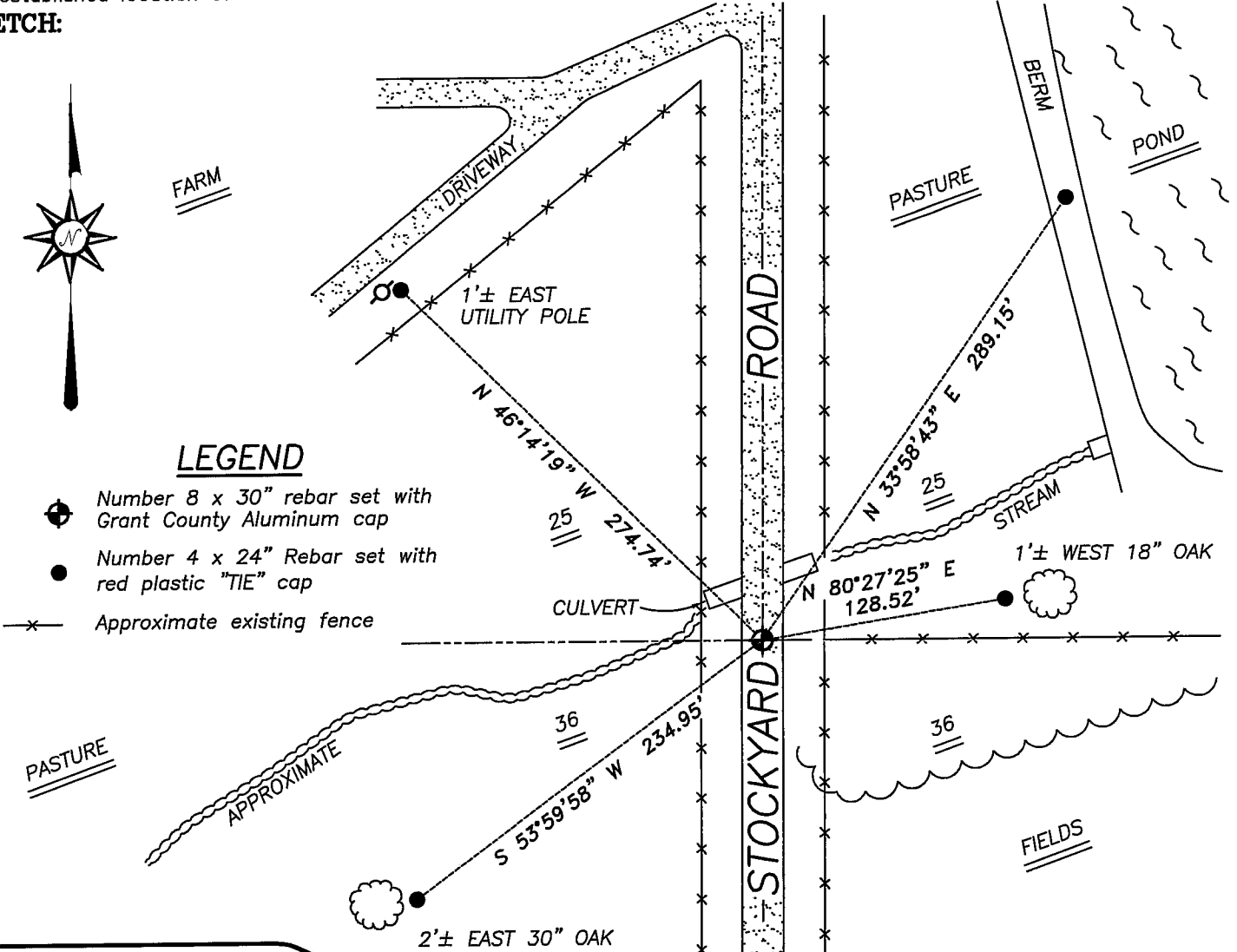
Corner was originally set in 1833 by Sibley.  
 No other record of the corner was found.

DESCRIPTION OF CORNER EVIDENCE FOUND

I found and used an existing fence to the East for Northing. Easting was established proportionately between the Southwest and Southeast corners of Section 25. Verified this corner using EDM & GPS methods.

DESCRIPTION OF CORNER AND WITNESS MONUMENTS, references and accessories used to perpetuate the original or re-established location of this corner. Witnesses to corner location Bobby Sedgwick & Shelby Blindert & Brad Hazen

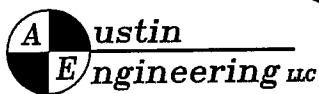
**SKETCH:**



LEGEND

- Number 8 x 30" rebar set with Grant County Aluminum cap
- Number 4 x 24" Rebar set with red plastic "TIE" cap
- x— Approximate existing fence

SKETCH NOT TO SCALE



4211 HWY 81 E, LANCASTER, WI 53813  
 PHONE 608-723-6363 FAX 608-723-6702

JOB NUMBER 04S263  
 FIELDBOOK: TSDR, 2217  
 G:\T6NR1W\25  
 H:\TIE\T6NR1W\102

DRAWN BY: SW AUSTIN  
 APPROVED: LL AUSTIN