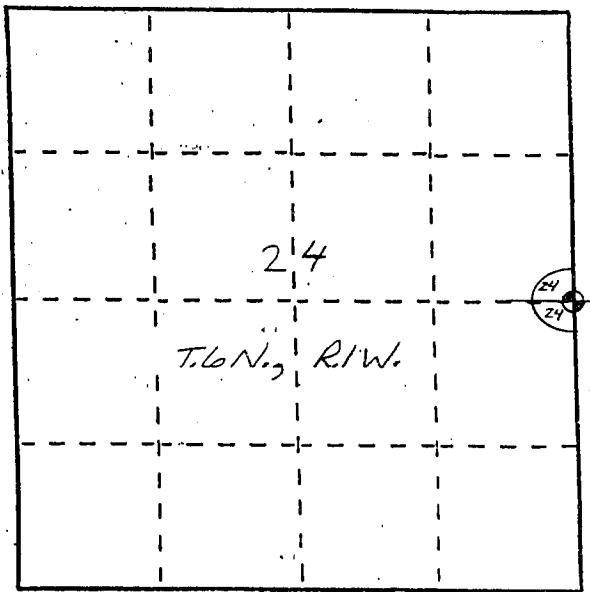


# U. S. PUBLIC LAND SURVEY MONUMENT RECORD

**INSTRUCTIONS:** This record shall show the location of the corner and shall include all of the following nine elements (a through i).

- (a) Identify the corner by reference to the U.S. public land survey system.
- = Corner monument restored.

The East Quarter Corner of  
 Section 24, Town 6 North,  
 Range 1 West, Wingville Township,  
 Grant County, Wisconsin.

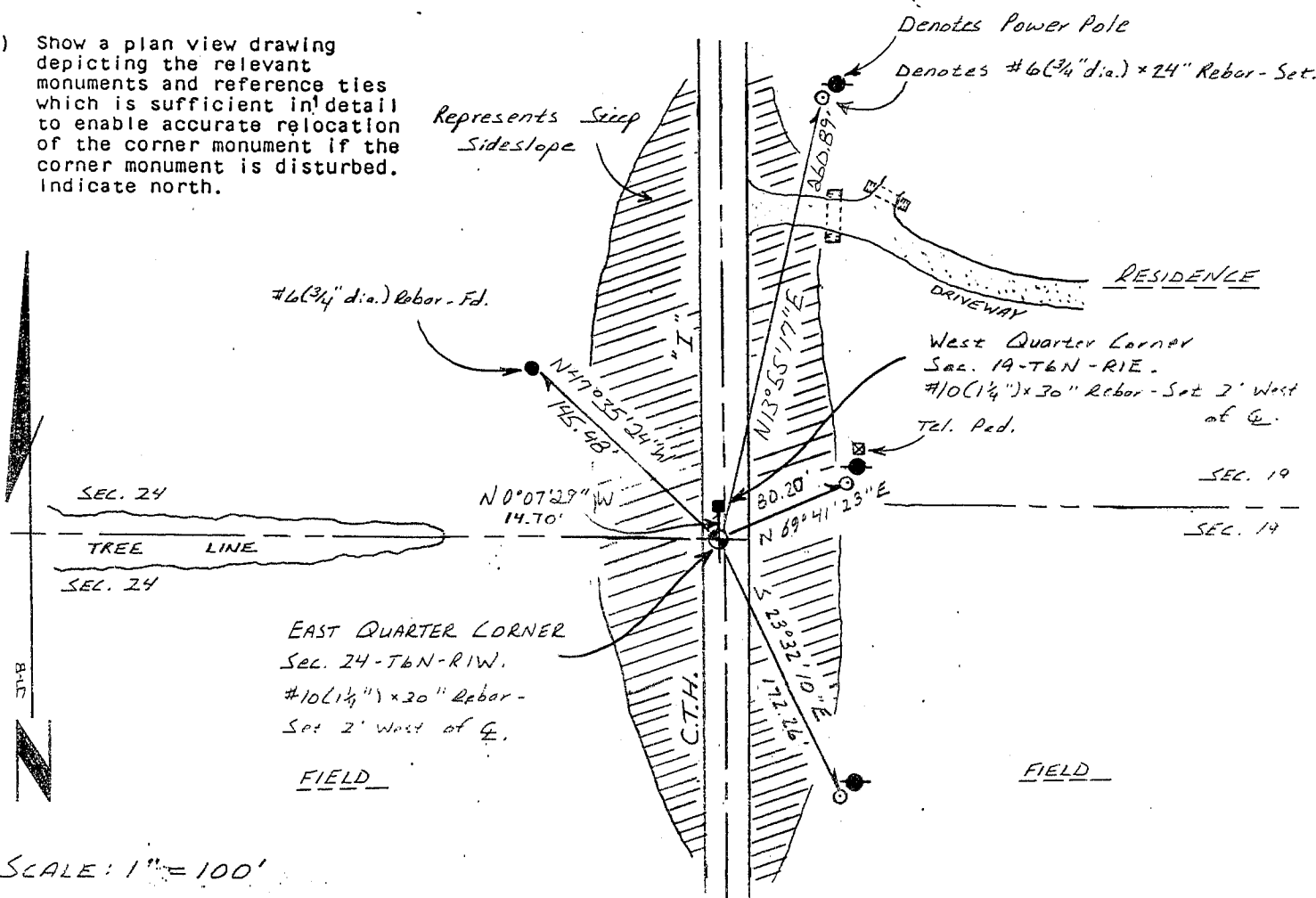


- (b) Describe any record evidence, monument evidence, occupational evidence, testimonial evidence or any other material evidence you considered, and whether the monument was found or placed.

Alum. capped rebar was found and accepted. Reference ties were set to replace monument position after road construction was completed in the area.

- (c) In the plan view drawing below, provide reference ties to at least 4 witness monuments, or, if the location is within a municipality, to at least 2 witness monuments. (Witness monuments shall be made of concrete, natural stone, iron or other equally durable material, ~~except~~ wood.) Describe witness monuments.

- (d) Show a plan view drawing depicting the relevant monuments and reference ties which is sufficient in detail to enable accurate relocation of the corner monument if the corner monument is disturbed. Indicate north.





Survey Monument Record

TYPE OF MONUMENT 3/4" X 24" IRON BAR  
W/ CAP.

CORNER NO. 80  
 SECTION 24  
 TOWN 6N  
 RANGE 1W

FIELD BOOK: 94-06  
 PAGE (23)



LOCATION  
 (Indicated by "X")

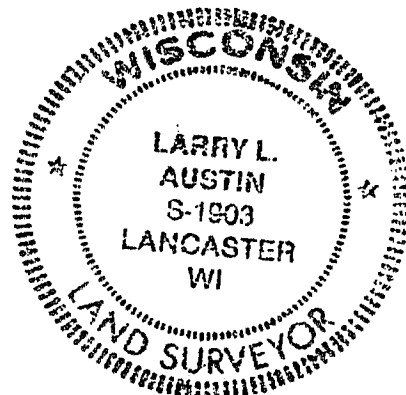
BASIS FOR MONUMENT LOCATION

(Use reverse side if necessary)

Show info such as: History of corner, with reference to Vol. and pg., dates, surveyor; exact description of monument replaced; if location computed, by taped or EDM traverse; landowner, remarks, etc.

SEAL:

CORNER SET IN 1832 BY  
 SIBLEY. NO RECORD OF CORNER.  
 FOUND SINCE ORIGINAL SURVEY;  
 CORNER WAS SET MIDWAY BETWEEN  
 THE NE CORNER AND THE SE CORNER  
 OF SECTION 24 AND IN THE  $\perp$  C.T.H. "I";  
 VERIFIED BY EDM TRAVERSE



CERTIFIED CORRECT

*Larry L. Austin*  
 Registered Land Surveyor  
 DATE: 3-20-97

TIE SKETCH

Show at least three (3) ties and monument

LEGEND

- ⊕ 3/4" X 24" IRON BAR SET  
W/ CAP.
- 1/2" X 15" IRON BAR SET
- XX EXISTING FENCE

