

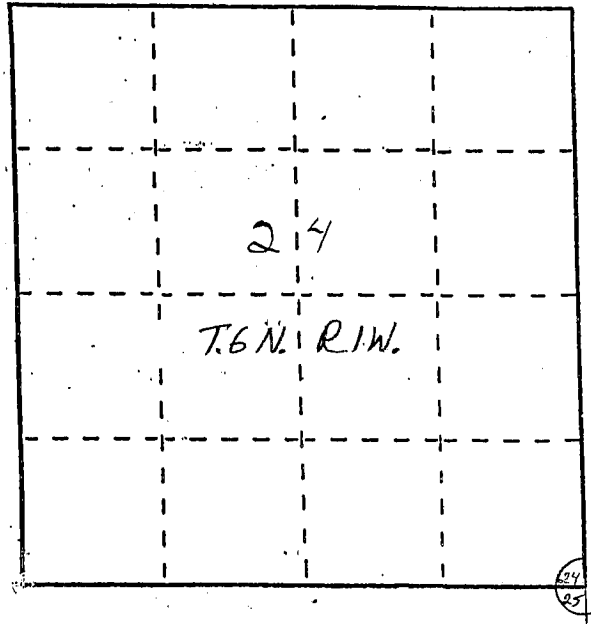
U. S. PUBLIC LAND SURVEY MONUMENT RECORD

INSTRUCTIONS: This record shall show the location of the corner and shall include all of the following nine elements (a through i).

- (a) Identify the corner by reference to the U.S. public land survey system.

○ = Corner monument restored.

The Southeast Corner of Section 24, Town 6 North, Range 1 West, Wingville Township, Grant County, Wisconsin.

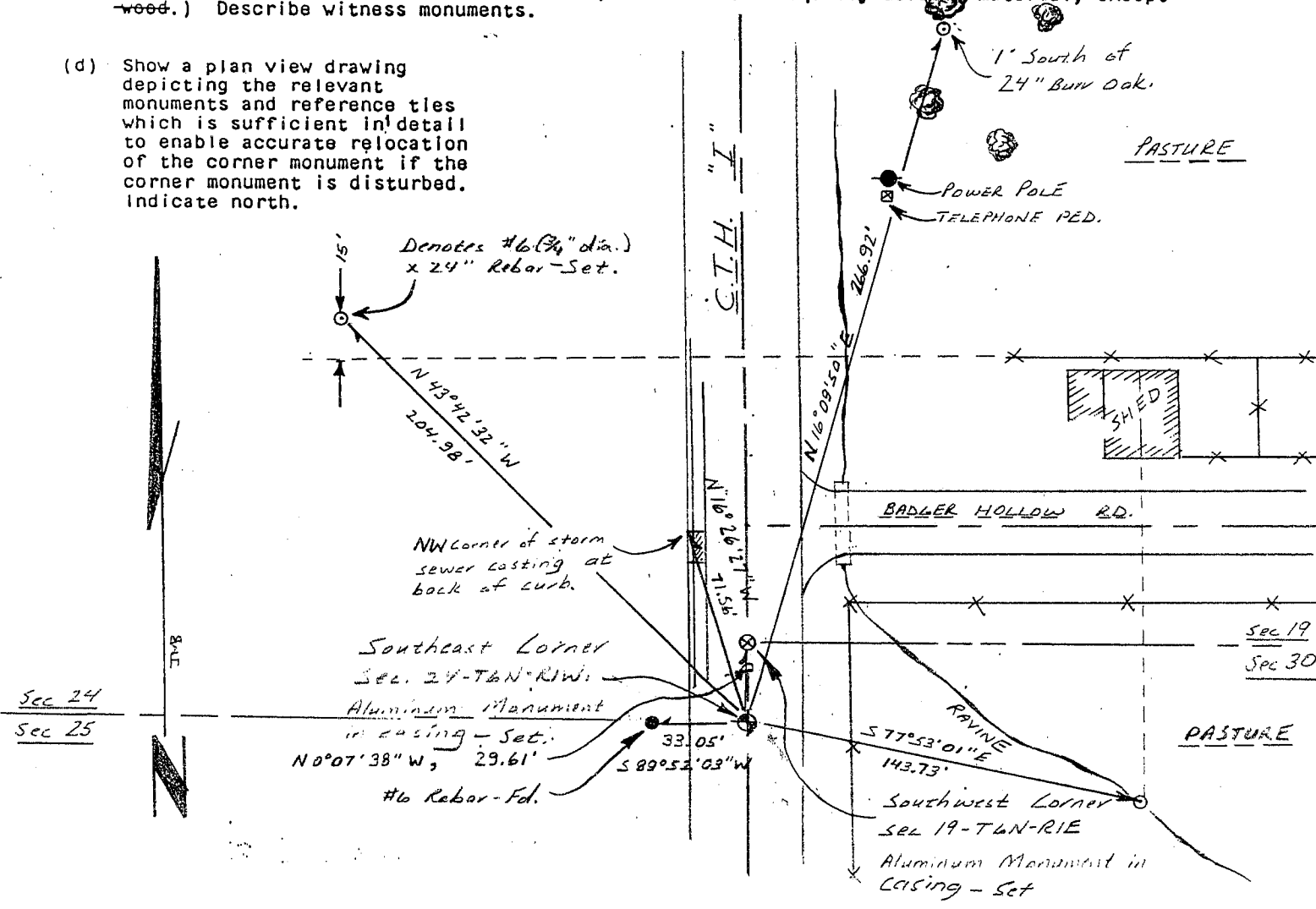


- (b) Describe any record evidence, monument evidence, occupational evidence, testimonial evidence or any other material evidence you considered, and whether the monument was found or placed.

A #10 (1 1/4") Rebar was found and accepted. Set reference ties to replace position after road construction was completed in the area.

- (c) In the plan view drawing below, provide reference ties to at least 4 witness monuments, or, if the location is within a municipality, to at least 2 witness monuments. (Witness monuments shall be made of concrete, natural stone, iron or other equally durable material, except wood.) Describe witness monuments.

- (d) Show a plan view drawing depicting the relevant monuments and reference ties which is sufficient in detail to enable accurate relocation of the corner monument if the corner monument is disturbed. Indicate north.



REC'D APR 30 1998

GRANT IOWA
COUNTY COUNTY

Survey Monument Record

CORNER NO. SECTION TOWN RANGE
25 30 6N 6N
1W 1E

FOUND RR SPIKE at NE 25-T6N-R1W

TYPE OF MONUMENT FOUND 1 1/4" IRON ROD at NW 30-T6N

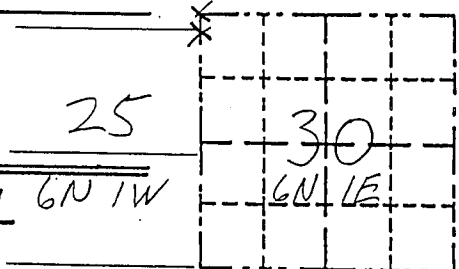
STATE PLANE COORDINATES: N _____ E _____

ELEVATION — M.S.L. DATUM: _____

THETA ANGLE: _____

FIELD BOOK: _____

PAGE _____



BASIS FOR MONUMENT LOCATION

(Use reverse side if necessary)

Show info such as: History of corner, with reference to Vol. and pg., dates, surveyor; exact description of monument replaced; if location computed, by taped or EDM traverse; landowner, remarks, etc.

LOCATION

(Indicated by "X")

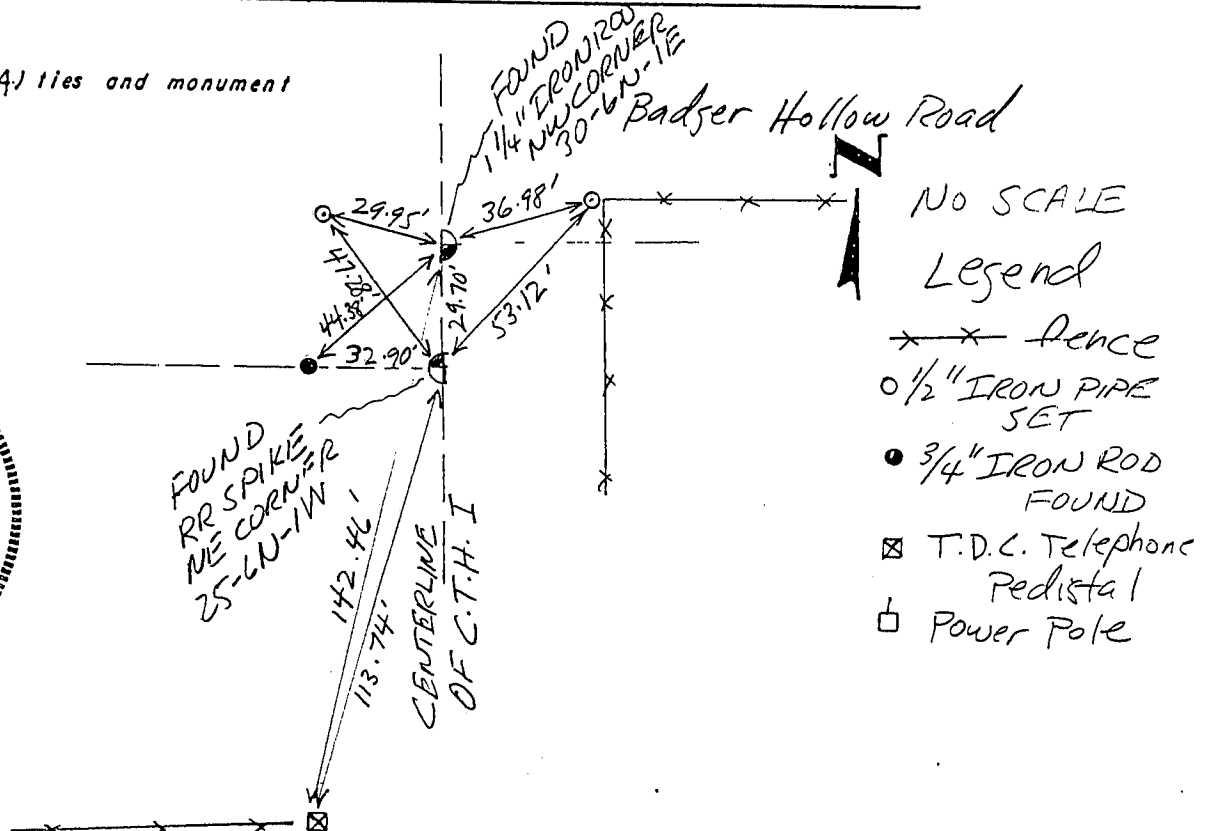
- FOUND PERPETUATED LOCATIONS
- OBSOLETE EVIDENCE LOCATION
- LOST CORNER (RESTORED BY PROPORTIONATE METHODS)

A RR spike was found in place as noted in many area surveys, recorded and unrecorded, at the NE corner of 25-6N-1W. A 1 1/4" Iron Rod was found at the original corner offset north of this spike on the Meridian. The RR spike at the NE of 25-6N-1W is balanced with occupation at the E 1/4 of 24-6N-1W and an existing monument at the E 1/4 of 25-6N-1W 2649.41' x 2648.39' respectively and also fits record to the original plat of Montfort to the west. Correlation of other corners north and east side of the meridian is poor with the original govt. record hence, the found Iron Rod was accepted at the record call.

CERTIFIED CORRECT TO THE BEST OF MY KNOWLEDGE AND BELIEF
Michael R. LaRosa
Registered Land Surveyor
DATE: 4/17/1998

TIE SKETCH

Show at least : (4) ties and monument

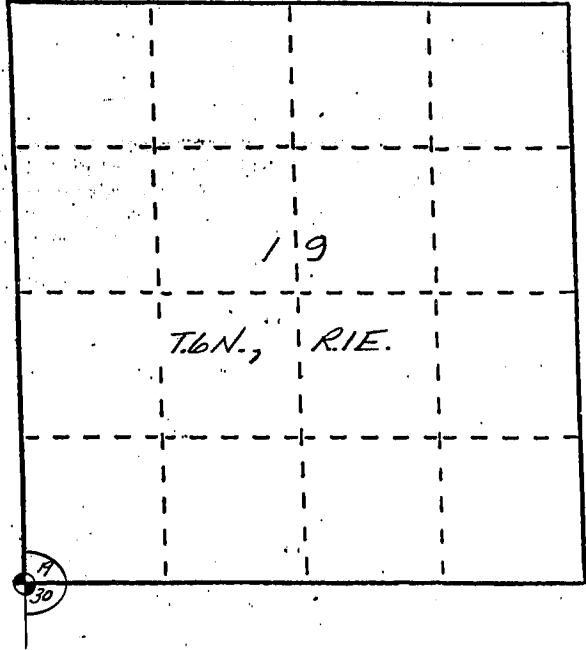


U. S. PUBLIC LAND SURVEY MONUMENT RECORD

INSTRUCTIONS: This record shall show the location of the corner and shall include all of the following nine elements (a through i).

- (a) Identify the corner by reference to the U.S. public land survey system.
- = Corner monument restored.

The Southwest Corner of Section 19,
Town 6 North - Range 1 East,
Eden Township, Iowa County,
Wisconsin.

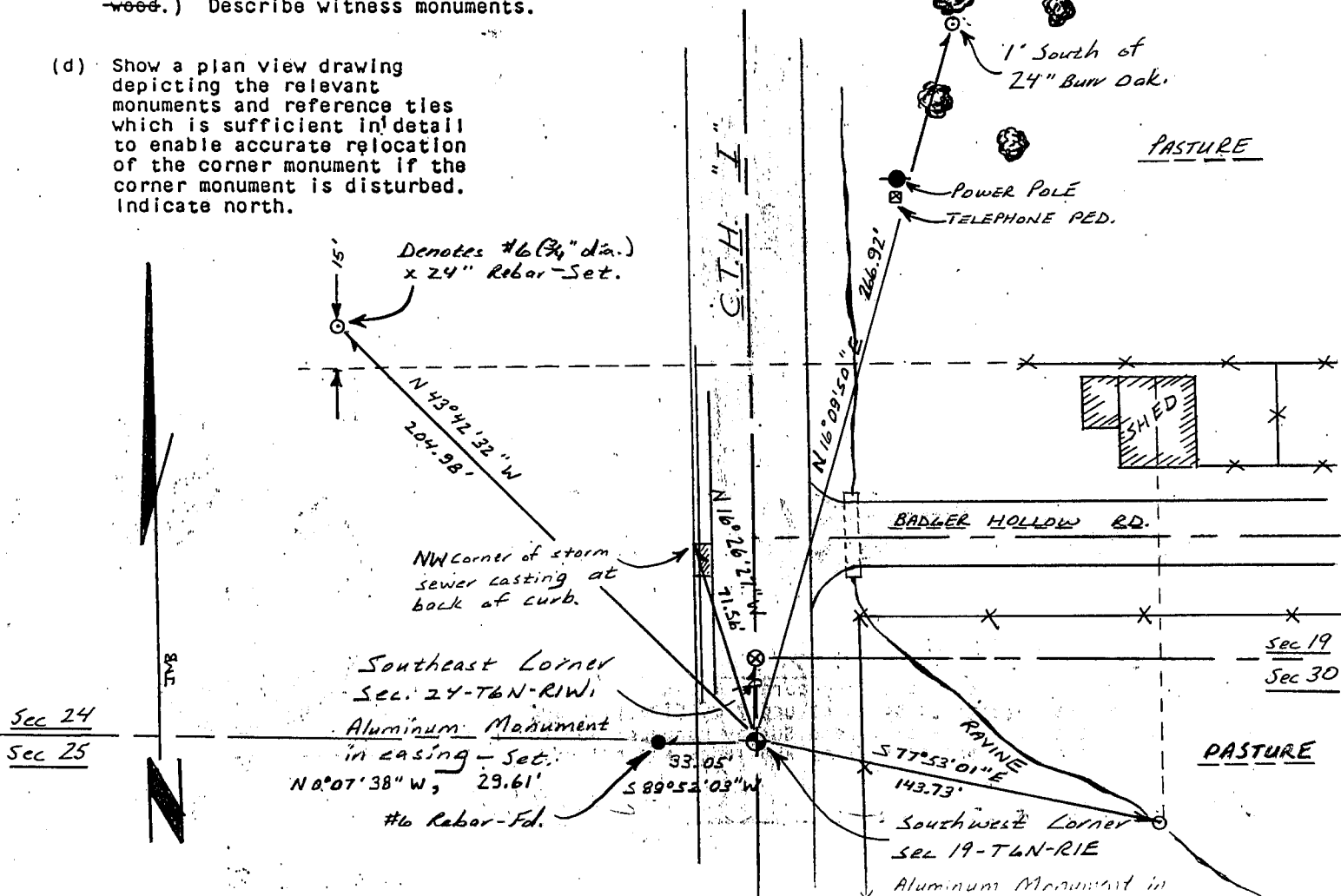


- (b) Describe any record evidence, monument evidence, occupational evidence, testimonial evidence or any other material evidence you considered, and whether the monument was found or placed.

A #10 (1 1/4") Rebar was found and accepted. Set reference ties to replace position after road construction was completed in the area.

- (c) In the plan view drawing below, provide reference ties to at least 4 witness monuments, or, if the location is within a municipality, to at least 2 witness monuments. (Witness monuments shall be made of concrete, natural stone, iron or other equally durable material, ~~except~~ wood.) Describe witness monuments.

- (d) Show a plan view drawing depicting the relevant monuments and reference ties which is sufficient in detail to enable accurate relocation of the corner monument if the corner monument is disturbed. Indicate north.



(e) Describe any material discrepancy between the location of the corner as restored or reestablished and the location of that corner as previously restored or reestablished by distance and direction. Show the discrepancy on the plan view drawing under (d), above. Show the distances between the corner as previously restored or reestablished and (1) the corner as restored or reestablished, and (2) to at least 2 of the witness monuments shown on the drawing in (d), above.

None.

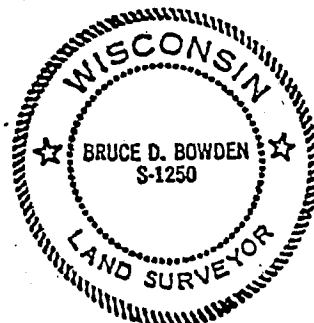
(f) Was the corner restored through acceptance of (1) an obliterated evidence location, or, (2) a found perpetuated location?

A found perpetuated location.

(g&h) Was the corner reestablished through lost corner proportionate methods? If so, show the method, including the directions and distances to other public land survey corners used as evidence or used for proportioning in determining the corner location?

No.

Affix Land Surveyor Seal



(i) I, BRUCE D. BOWDEN,

(type or print name) certify that the corner location shown on this record was determined by me or under my direction and control and that this U.S. Public Land Survey Monument Record is correct and complete to the best of my knowledge and belief.

Signature

Date

Bruce D. Bowden Sept 21, 1998