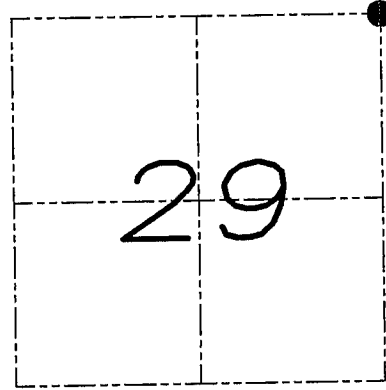


# U.S. PUBLIC LAND SURVEY MONUMENT RECORD

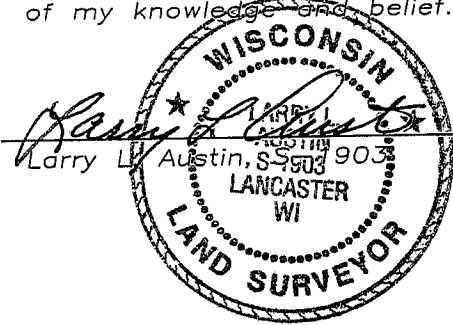
Section 29, Town 6 North Range 1 West, Town of Wingville, Grant County, Wisconsin

## CERTIFICATE

I, Larry L. Austin, do hereby certify that the corner location on this record was determined by me and/or under my direct supervision and that this U.S. public land survey monument record is correct and complete to the best of my knowledge and belief.



● = CORNER LOCATION



11-25-08  
date

## HISTORY OF CORNER

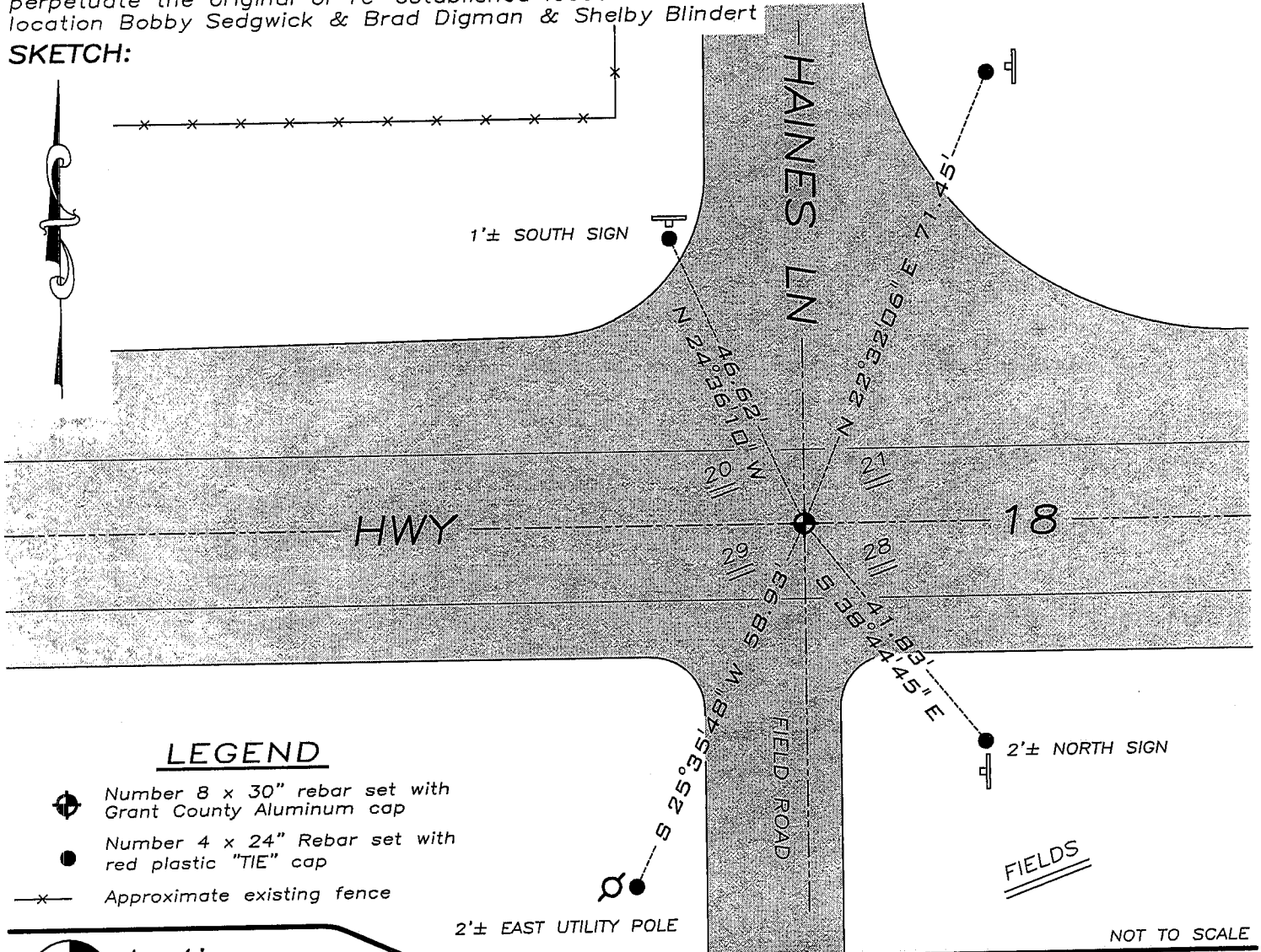
Corner was originally set in 1833 by Sibley. In 1846 Stuntz set a post in the original mound. In 1870 Allen tied to the corner. No other record of the corner was found.

## CORNER EVIDENCE FOUND

I accepted an occupied location after verification from the North, South, East, and West. This location fit well with adjoining corners. Verified this location using EDM & GPS methods.

**DESCRIPTION OF CORNER AND WITNESS MONUMENTS,** references and accessories used to perpetuate the original or re-established location of this corner. Witnesses to monument location Bobby Sedgwick & Brad Digman & Shelby Blindert

## SKETCH:



## LEGEND

- ⊕ Number 8 x 30" rebar set with Grant County Aluminum cap
- Number 4 x 24" Rebar set with red plastic "TIE" cap
- x- Approximate existing fence



**Austin Engineering LLC**

4211 HWY 81 E, LANCASTER, WI 53813  
PHONE 608-723-6363 FAX 608-723-6702

JOB NUMBER OBS198-KELLEY  
FIELDBOOK: TDSR, 2800  
G:\GRANTDOT\HWY18  
H:\TIE\T6NR1W\89

DRAWN BY: SW AUSTIN  
APPROVED: LL AUSTIN

89