

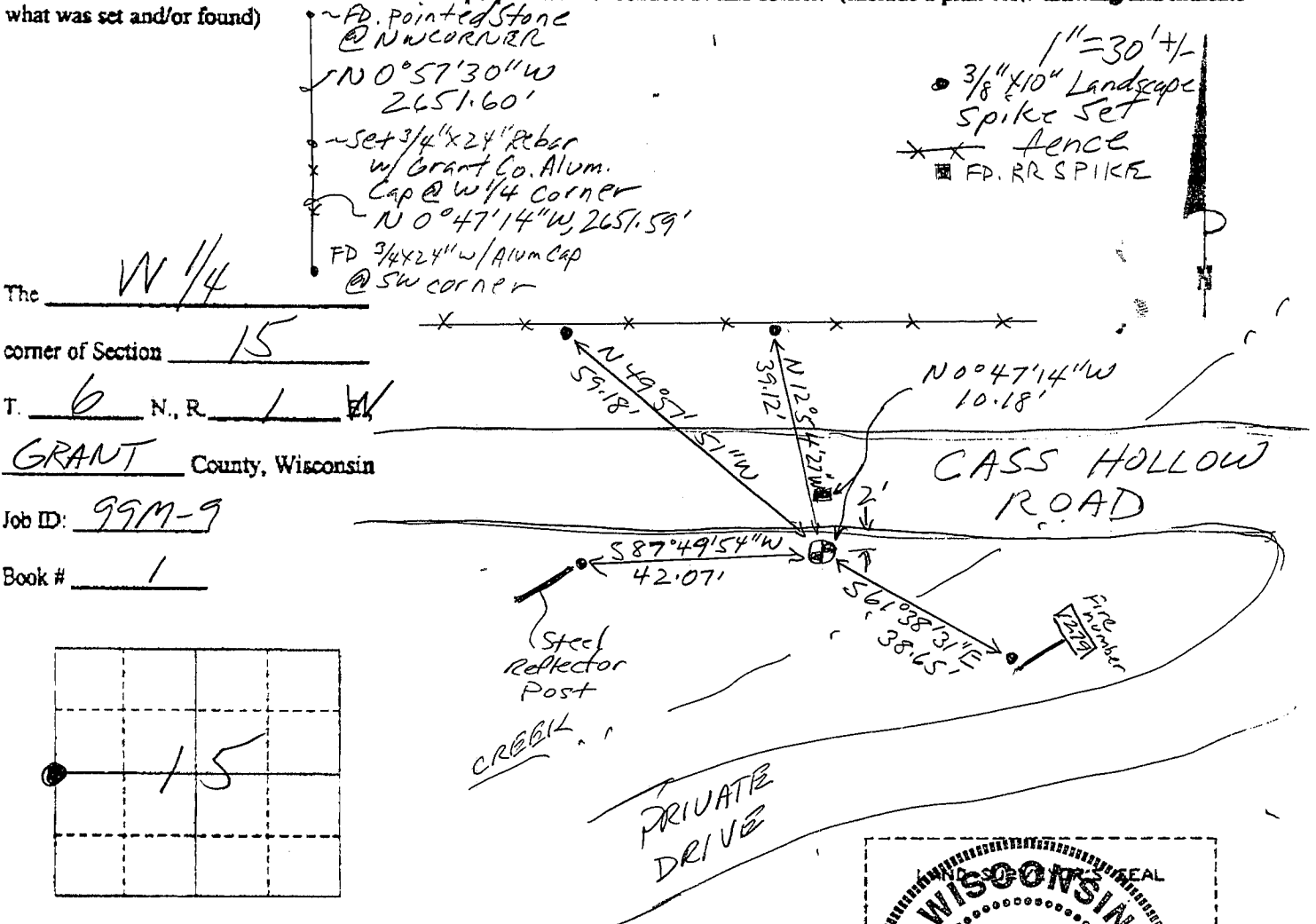
U.S. PUBLIC LAND SURVEY MONUMENT RECORD

(As Required By s. A-E 7.08, WI Adm. Code)

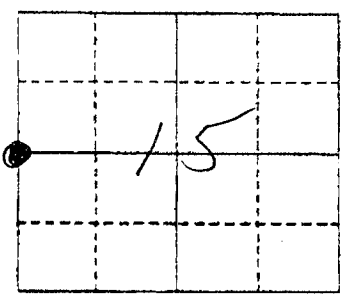
History of original corner establishment and subsequent restorations and description of any record, monument, occupational, testimonial or other evidence considered: *There are no recent survey records of this corner. An E-W road near the corner is too "bowed" to accept for northings. A found RR spike in the road centerline at a fence line south was not accepted for northings but was far easting. The corner was computed at 1/2 the distance between found monuments at the NW & SW corners on line between the RR spike and the SW corner. See section Summary Corner was: (Check All That Apply) sheet for relationships to other corners.*

- Restored through acceptance of an obliterated evidence location
- Restored through acceptance of a found perpetuated location
- Considered a lost corner and reestablished through lost corner proportionate methods (include a plan view drawing showing distances and directions to other Public Land Survey Corners used for proportioning and determining the corner location)
- Restored or reestablished in a location that differs from a previous restoration or reestablishment (include a plan view drawing and indicate what was set and /or found)

Describe the monument and accessories used to perpetuate the location of this corner. (Include a plan view drawing and indicate what was set and/or found)



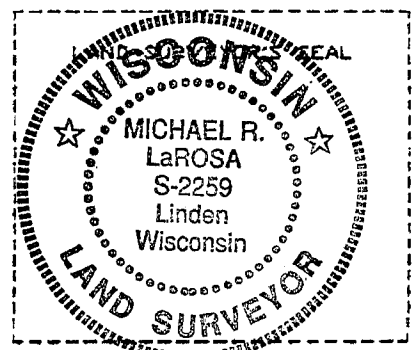
The W 1/4
corner of Section 15
T. 6 N., R. 1 W
GRANT County, Wisconsin
Job ID: 99M-9
Book # 1



● = Location of Corner

Michael R. LaRosa
Type or print name) certify that the corner location shown on this record was determined by me or under my direction and control and that this U.S. Public Land Survey Monument Record is correct and complete to the best of my knowledge and belief.

Michael R. LaRosa 10/19/1999
Signature Date



Index No. 57