

U.S. PUBLIC LAND SURVEY MONUMENT RECORD - GRANT COUNTY, WI

Section 24, Town 6 North Range 1 West, Town of Wingville (a)

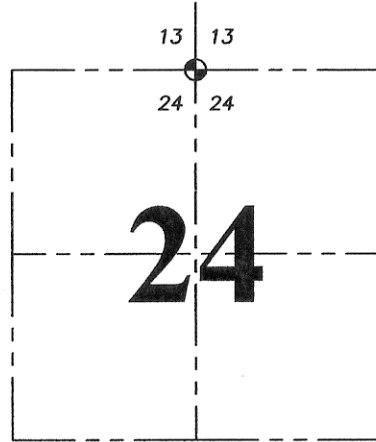
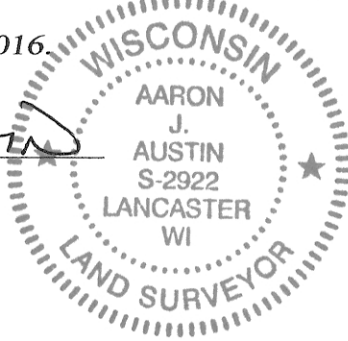
NOTE: This form is intended and designed to fulfill all requirements of the Wisconsin Administrative Code Chapter A-E 7.08, U.S. Public Land Survey Monument Record (3) (a) (b) (c) (d) (e) (f) (g) (h) (i).

CERTIFICATE: (i)

I, Aaron J. Austin, Wisconsin Professional Land Surveyor, do hereby certify that the corner location on this record was determined by me and/or under my direct supervision and that this U.S. Public Land Survey Monument Record is correct and complete to the best of my knowledge and belief.

Dated this 25th day of July, 2016.

Aaron J. Austin
Aaron J. Austin, S-2922



⊙ = CORNER LOCATION

Grant County Coordinates:
NAD 83 (2011) WISCORS
Northing: 574,822.45
Easting: 891,734.53

HISTORY OF CORNER ESTABLISHMENT:

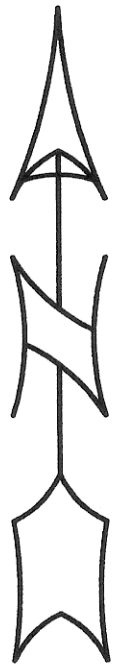
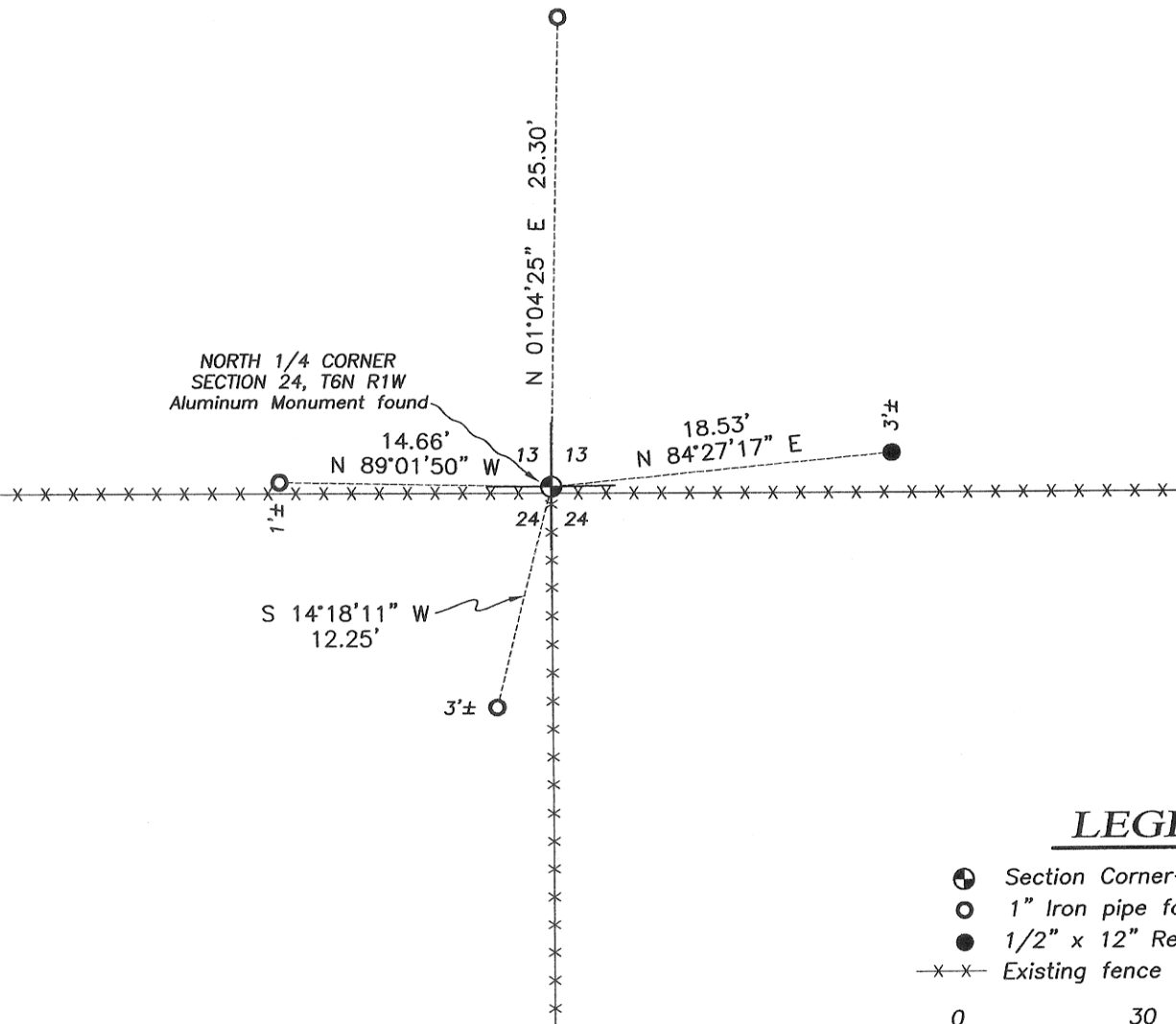
Sibley set the original corner in 1833.
Larry Austin reset the corner in 1997 and filed a Survey Monument Record.

DESCRIPTION OF CORNER EVIDENCE FOUND: (b) (f) (g) (h)

I found the Aluminum Monument set by Larry Austin and 3 witness corners. I set one additional witness corner after I verified it's location with G.P.S. methods.

DESCRIPTION OF CORNER AND WITNESS MONUMENTS, references and accessories used to perpetuate the original or re-established location of this corner. (c) (d) (e)
Witnesses to corner location Shane Austin, Owen Austin.

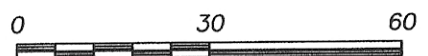
SKETCH:



Bearings referenced to the Grant County Coordinate System NAD 83 (2011) which was by determined WISCORS and G.P.S. observation.

LEGEND

- ⊙ Section Corner—as designated
- 1" Iron pipe found
- 1/2" x 12" Rebar set
- x-x- Existing fence



SCALE 1" = 30'

GRANT COUNTY

Survey Monument Record

TYPE OF MONUMENT ALUMINIUM MONUMENT

STATE PLANE COORDINATES: N _____
E _____

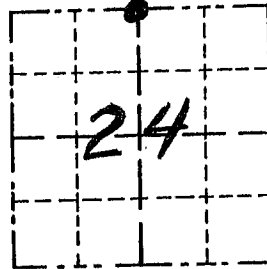
ELEVATION — M.S.L. DATUM: _____

THETA ANGLE: _____

FIELD BOOK: FB 9406

PAGE 5

CORNER NO. 62
SECTION 24
TOWN 6 N
RANGE 1 W



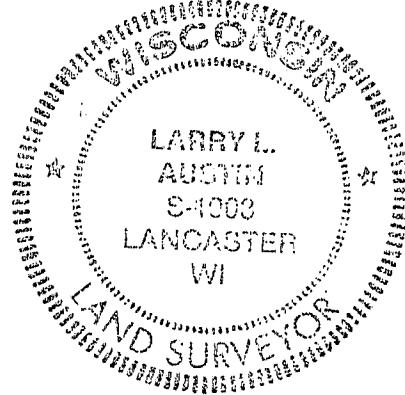
LOCATION
(Indicated by "●")

BASIS FOR MONUMENT LOCATION

(Use reverse side if necessary)

Show info such as: History of corner, with reference to Vol. and pg., dates, surveyor; exact description of monument replaced; if location computed, by taped or EDM traverse; landowner, remarks, etc.

SEAL:



NO RECORD OF CORNER FOUND SINCE ORIGINAL SURVEYS; I SET THE CORNER BASED ON OCCUPATION EVIDENCE

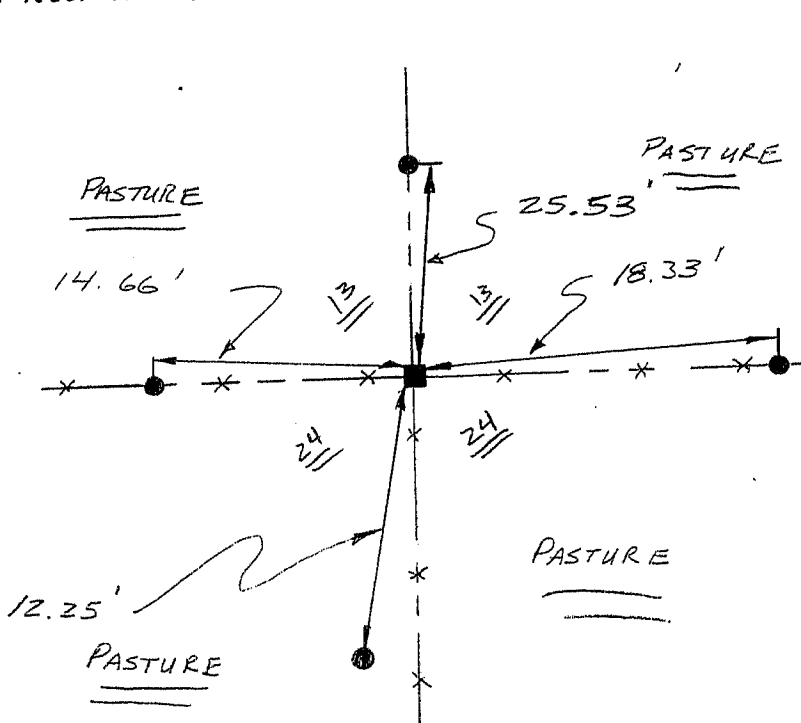
CERTIFIED CORRECT

Larry L. Austin
Registered Land Surveyor

DATE: 8/19/94

TIE SKETCH

Show at least three (3) ties and monument



NO SCALE

LEGEND

- Alum Mon. SET
- 1" x 12" IRON PIPE SET AS TIES

—x— EXISTING FENCE 62