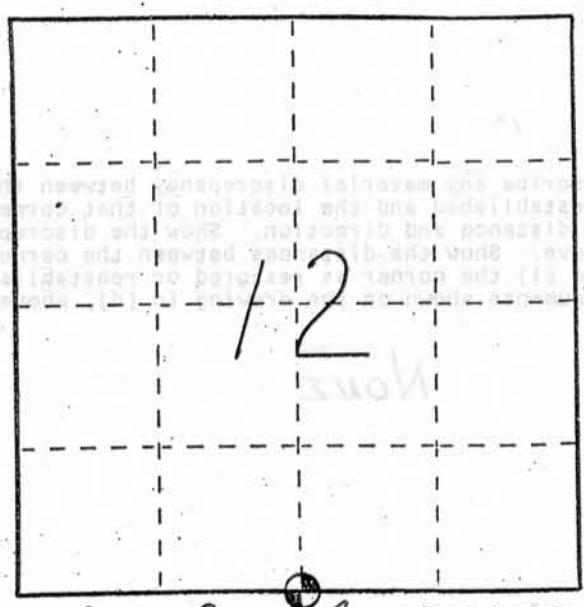


# U. S. PUBLIC LAND SURVEY MONUMENT RECORD

**INSTRUCTIONS:** This record shall show the location of the corner and shall include all of the following nine elements (a through i).

- (a) Identify the corner by reference to the U.S. public land survey system.
- ⊕ = Corner monument restored.

SOUTH QUARTER CORNER OF  
SECTION 12, TOWN 6 NORTH,  
RANGE 1 WEST, WINEVILLE  
TOWNSHIP, GRANT COUNTY,  
WISCONSIN



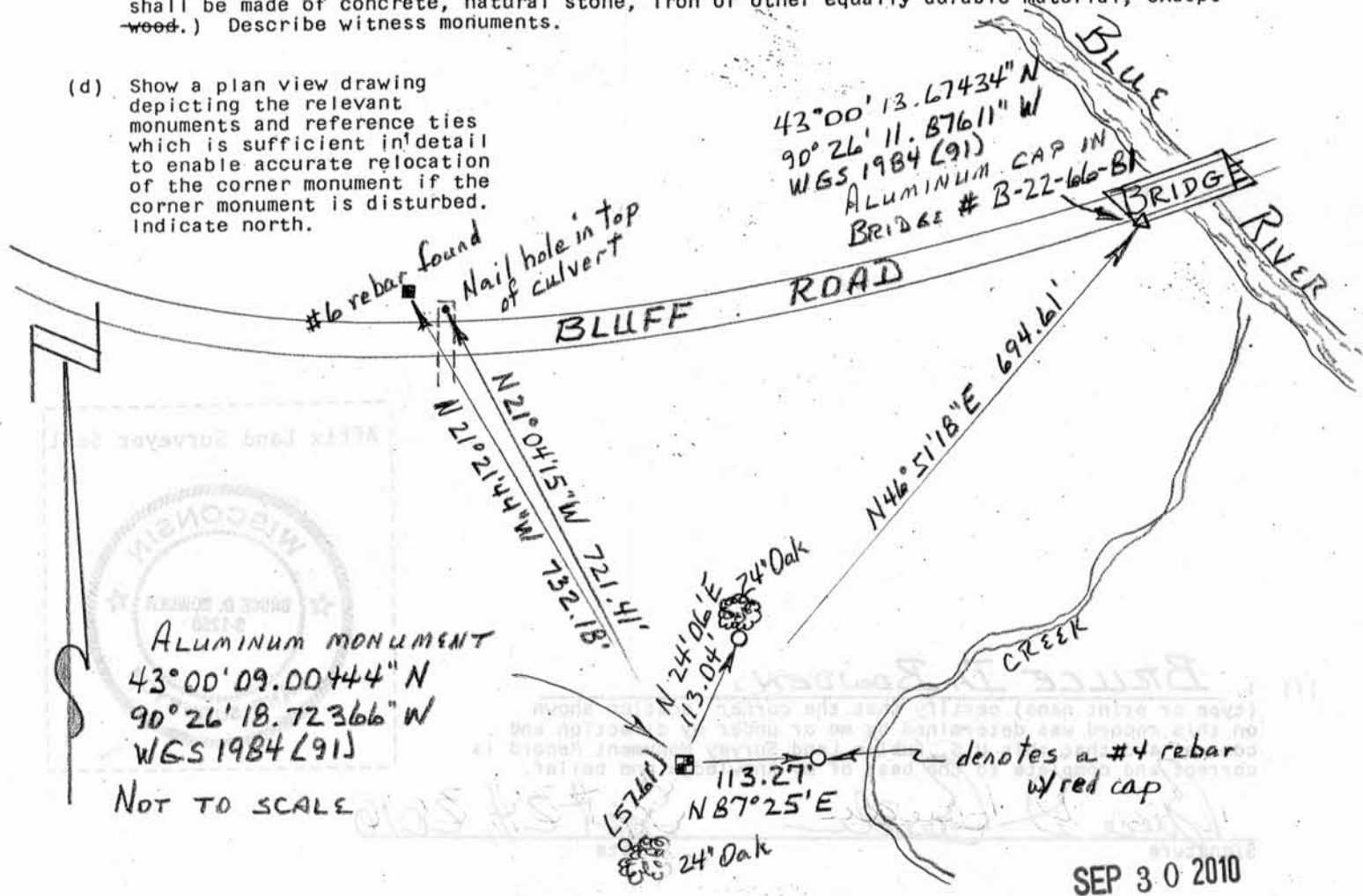
GRANT COUNTY COORDINATES  
N 580172.50  
E 891699.63

- (b) Describe any record evidence, monument evidence, occupational evidence, testimonial evidence or any other material evidence you considered, and whether the monument was found or placed.

FOUND ALUMINUM MONUMENT AS SHOWN ON L.L. AUSTIN'S 2002 TIE SHEET. LOCATION MATCHES MONUMENTATION FROM APPARENT SURVEY OF BLUFF ROAD FOR WINEVILLE TWP AS DESCRIBED IN VOL 571 OF PAGE 547 OF GRANT COUNTY REGISTRY DATED 1981.

- (c) In the plan view drawing below, provide reference ties to at least 4 witness monuments, or, if the location is within a municipality, to at least 2 witness monuments. (Witness monuments shall be made of concrete, natural stone, iron or other equally durable material, ~~except~~ ~~wood~~.) Describe witness monuments.

- (d) Show a plan view drawing depicting the relevant monuments and reference ties which is sufficient in detail to enable accurate relocation of the corner monument if the corner monument is disturbed. Indicate north.

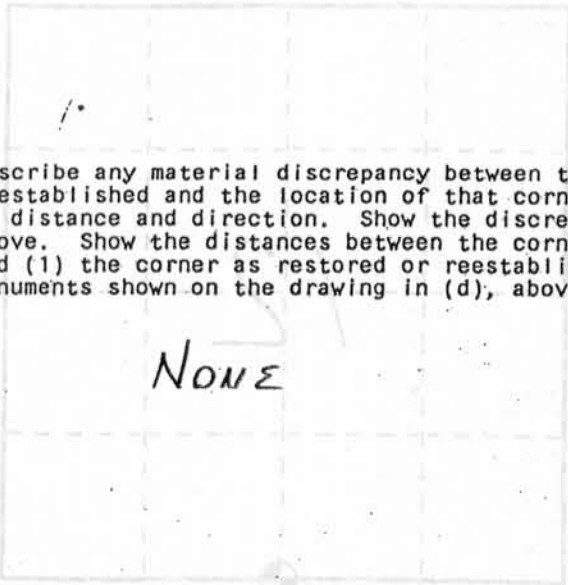


SEP 30 2010

U. S. PUBLIC LAND SURVEY MONUMENT RECORD

This record shall show the location of the corner and shall include all of the following information (a through (j)).

(a) Identify the corner by reference to the U.S. public land survey system. (b) Corner monument restored.



(e) Describe any material discrepancy between the location of the corner as restored or reestablished and the location of that corner as previously restored or reestablished by distance and direction. Show the discrepancy on the plan view drawing under (d), above. Show the distances between the corner as previously restored or reestablished and (1) the corner as restored or reestablished, and (2) to at least 2 of the witness monuments shown on the drawing in (d), above.

NONE

(f) Was the corner restored through acceptance of (1) an obliterated evidence location, or, (2) a found perpetuated location?

(2) A FOUND PERPETUATED LOCATION

(g&h) Was the corner reestablished through lost corner proportionate methods? If so, show the method, including the directions and distances to other public land survey corners used as evidence or used for proportioning in determining the corner location?

No



Affix Land Surveyor Seal



(i) I, BRUCE D. BOWDEN, (type or print name) certify that the corner location shown on this record was determined by me or under my direction and control and that this U.S. Public Land Survey Monument Record is correct and complete to the best of my knowledge and belief.

Bruce D. Bowden  
Signature

Sept 24, 2010  
Date

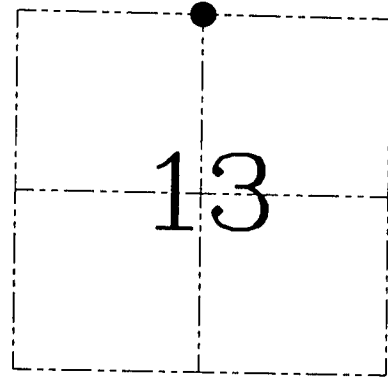
**U.S. PUBLIC LAND SURVEY MONUMENT RECORD – GRANT COUNTY, WI**  
**Section 13, Town 6 North Range 1 West, Town of Wingville**

CERTIFICATE

I, Larry L. Austin, do hereby certify that the corner location on this record was determined by me and/or under my direct supervision and that this U.S. public land survey monument record is correct and complete to the best of my knowledge and belief.

Dated this 2nd day of August, 2002

*Larry L. Austin*  
 Larry L. Austin S-1903



● = CORNER LOCATION

HISTORY OF CORNER ESTABLISHMENT

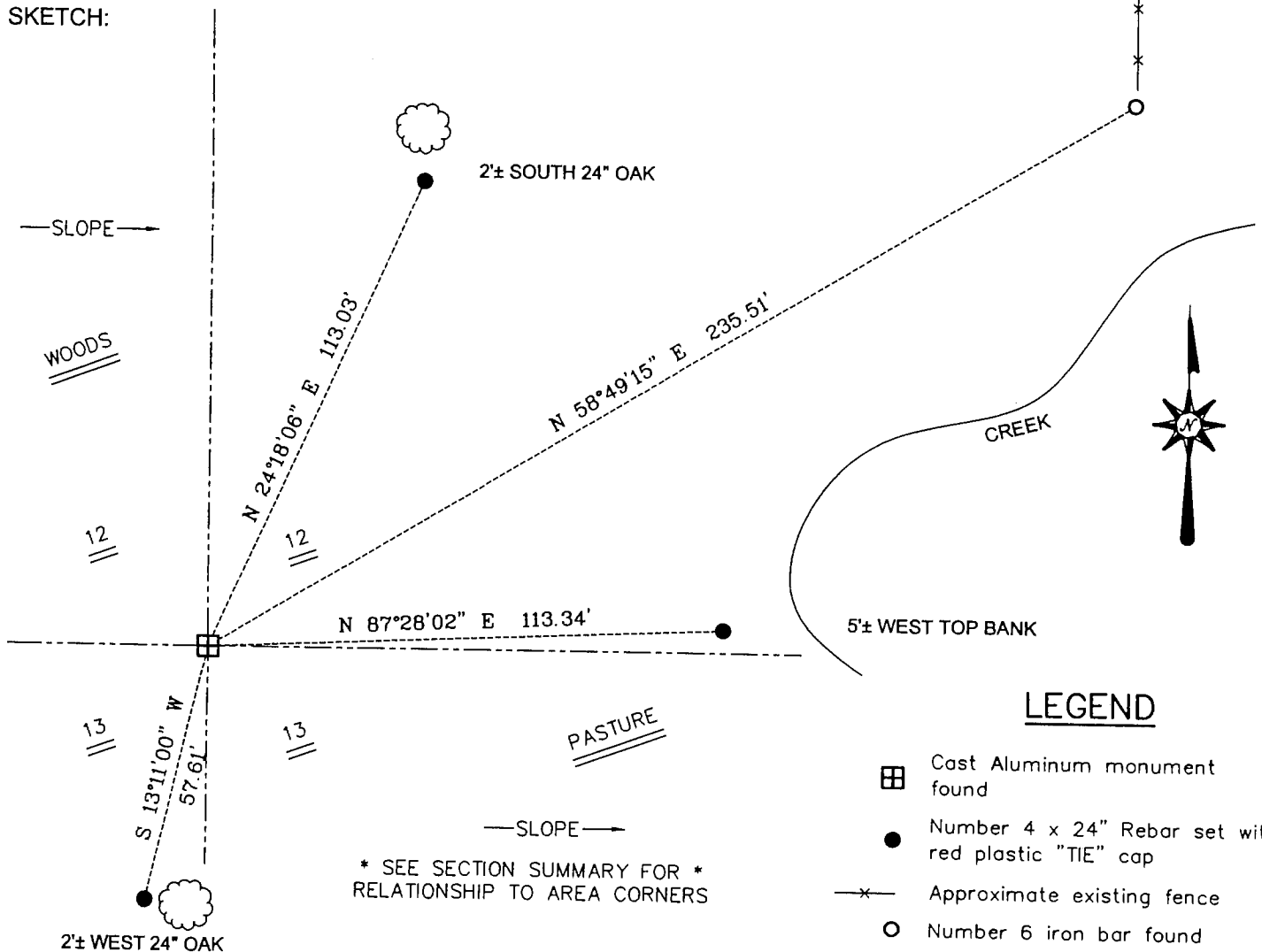
Corner was originally set in 1833 by Sibley.  
 No other record of the corner was found.

DESCRIPTION OF CORNER EVIDENCE FOUND

I found a Cast Aluminum monument at this location with no record. I accepted it's location after an EDM & GPS traverse of the area.

DESCRIPTION OF CORNER AND WITNESS MONUMENTS, references and accessories used to perpetuate the original or re-established location of this corner. Witnesses to the corner location Bobby Sedgwick & Shelby Blindert & Brad Digman

SKETCH:



SKETCH NOT TO SCALE

**AUSTIN ENGINEERING, LLC**

4211 HWY 81 EAST, LANCASTER, WI 53813  
 PHONE 608-723-6363 FAX 608-723-6702

FIELDBOOK: SDR33, 2135  
 G: \T6NR1W\T6NR1W  
 C: \SWA\TIE\T6NR1W\42  
 CREW: BS-SB-SA-BD

DRAWN BY: SW AUSTIN  
 APPROVED: LL AUSTIN

**CORNER NUMBER 42**

# SECTION CORNER TIE SHEET

To the S 1/4 corner of Section 12, Town 6 North, Range 1 West, Wingville Township, Grant County, Wisconsin.

I, Terrance L. Genske, hereby certify that I have complied with the Wisconsin Statutes, Statutes of the United States, and the rules and regulations made by the Secretary of the Interior in the location of the corner shown below.

*Terrance L. Genske*  
 Terrance L. Genske  
 6/12/80



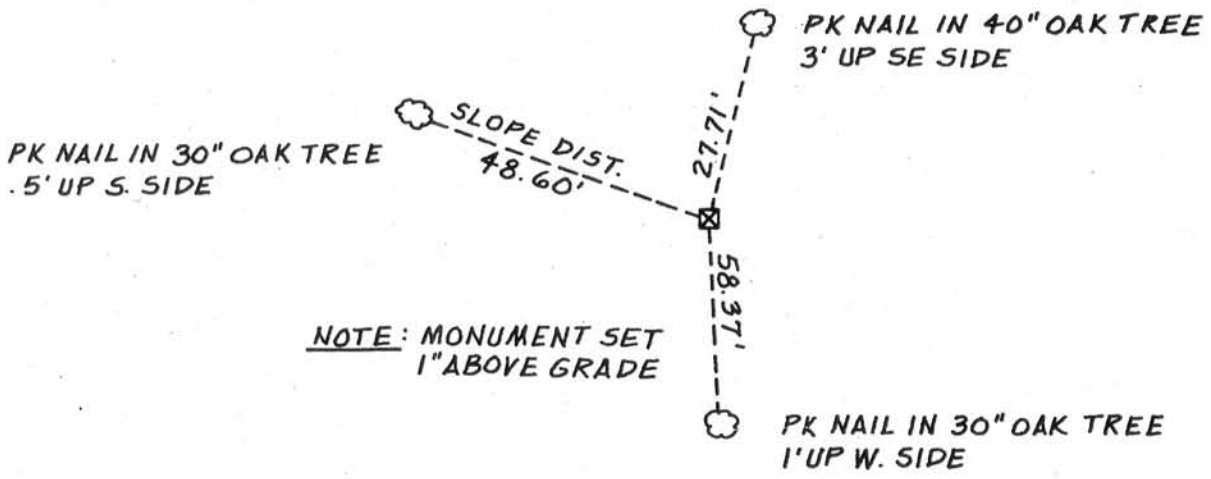
Description of Original Monument and Accessories

Wood post set by Sylvester Sibley on May 1, 1833  
 Burr oak 8N11W 3.63 ch.  
 Burr oak 4 574W 91 links

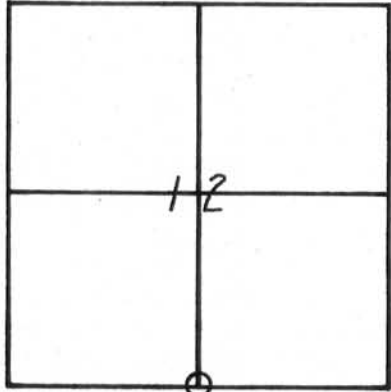
LEGEND

☒ ALUMINUM MONUMENT

Monument and Accessories Set



NOTE: MONUMENT SET 1" ABOVE GRADE



Description of Corner Evidence

Corner set by single proportionate measurement between the S 1/4 corner of 11-6-1 and the SE corner of 12-6-1.



*Terrance L. Genske*  
 6/17/80